

UNITED STATES
DEPARTMENT OF THE INTERIOR
BUREAU OF LAND MANAGEMENT

APPLICATION FOR PERMIT TO DRILL, DEEPEN, OR PLUG BACK

1a. Type of Work DRILL	5. Lease Number SF-080674
1b. Type of Well GAS	Unit Reporting Number 891001054A
2. Operator BURLINGTON RESOURCES 14538 Oil & Gas Company	6. If Indian, All. or Tribe
3. Address & Phone No. of Operator PO Box 4289, Farmington, NM 87499 (505) 326-9700	7. Unit Agreement Name San Juan 27-4 Unit 7452
4. Location of Well 2450' FSL, 1010' FEL Latitude 36° 33' 30", Longitude 107° 15' 02"	8. Farm or Lease Name San Juan 27-4 Unit
	9. Well Number 142A
	10. Field, Pool, Wildcat Blanco MV 72319
	11. Sec., Twn, Rge, Mer. (NMPM) Sec 21, T-27-N, R-4-W API # 30-039- 25960
14. Distance in Miles from Nearest Town 60 miles to Bloomfield	12. County RA
	13. State NM
15. Distance from Proposed Location to Nearest Property or Lease Line 1010'	
16. Acres in Lease	17. Acres Assigned to Well 320 E/2
18. Distance from Proposed Location to Nearest Well, Drlg, Compl, or Applied for on this Lease	
19. Proposed Depth 6523 This action is subject to technical and procedural review pursuant to 43 CFR 3165.3 and appeal pursuant to 43 CFR 3165.4.	20. Rotary or Cable Tools Rotary
21. Elevations (DF, FT, GR, Etc.) 7111' GR	22. Approx. Date Work will Start DRILLING OPERATIONS AUTHORIZED ARE SUBJECT TO COMPLIANCE WITH ATTACHED "GENERAL REQUIREMENTS"
23. Proposed Casing and Cementing Program See Operations Plan attached	
24. Authorized by: <u><i>Donna Spauld</i></u> Regulatory/Compliance Administrator	<u>5-20-98</u> Date

PERMIT NO. _____ APPROVAL DATE AUG 21 1998
APPROVED BY *Wayne Leonard* TITLE Act. Dir. DATE 8/21/98

Archaeological Report to be submitted

Threatened and Endangered Species Report to be submitted

NOTE: This format is issued in lieu of U.S. BLM Form 3160-3

Title 18 U.S.C. Section 1001, makes it a crime for any person knowingly and willfully to make to any department or agency of the United States any false, fictitious or fraudulent statements or presentations as to any matter within its jurisdiction.

NEL-4079@

NMOCD

District I
PO Box 1980, Hobbs NM 88241-1980
District II
PO Drawer KK, Artesa, NM 87211-0719
District III
1000 Rio Brazos Rd., Aztec, NM 87410
District IV
PO Box 2088, Santa Fe, NM 87504-2088

State of New Mexico
Energy, Minerals & Natural Resources Department

OIL CONSERVATION DIVISION
PO Box 2088
Santa Fe, NM 87504-2088

Form C
Revised February 21,
Instructions on
Submit to Appropriate District C
State Lease - 4 C
Fee Lease - 3 C

93 JUN 10 PM 1:05

☐ AMENDED REF

WELL LOCATION AND ACREAGE DEDICATION PLAT

1 API Number 30-039-	2 Pool Code 72319	3 Pool Name Blanco Mesaverde
4 Property Code 7452	5 Property Name SAN JUAN 27-4 UNIT	6 Well Number # 142A
7 OGRID No. 14538	8 Operator Name BURLINGTON RESOURCES OIL & GAS COMPANY	9 Elevation 7111

10 Surface Location

UL or Lot No. I	Section 21	Township 27 N	Range 4 W	Lot Idn	Feet from the 2450	North/South line SOUTH	Feet from the 1010	East/West line EAST	County RIO AR
--------------------	---------------	------------------	--------------	---------	-----------------------	---------------------------	-----------------------	------------------------	------------------

11 Bottom Hole Location If Different From Surface

1 UL or lot no.	2 Section	3 Township	4 Range	5 Lot Idn	6 Feet from the	7 North/South line	8 Feet from the	9 East/West line	10 County
-----------------	-----------	------------	---------	-----------	-----------------	--------------------	-----------------	------------------	-----------

12 Dedicated Acres E/320	13 Joint or Infill	14 Consolidation Code	15 Order No.
-----------------------------	--------------------	-----------------------	--------------

NO ALLOWABLE WILL BE ASSIGNED TO THIS COMPLETION UNTIL ALL INTEREST HAVE BEEN CONSOLIDATED
OR A NON-STANDARD UNIT HAS BEEN APPROVED BY THE DIVISION

16	5258'(R)	17 OPERATOR CERTIFICATION I hereby certify that the information contained hereon is true and complete to the best of my knowledge and belief. Signature Peggy Bradfield Printed Name Regulatory Administrator Title 5-20-98 Date
RECEIVED AUG 25 1998 OIL CON. DIV. DIST. 3	21	NMSF - 080674
5280'(R)	1010'	5280'(R)
2450'		7016 Certificate Number
5271'(R)		

OPERATIONS PLAN

Well Name: San Juan 27-4 Unit #142A
Location: 2450'FSL, 1010'FEL Section 21, T-27-N, R-4-W
Rio Arriba County, New Mexico
Latitude 36° 33'30", Longitude 107° 15'02"
Formation: Blanco Mesa Verde
Elevation: 7111'GL

<u>Formation Tops:</u>	<u>Top</u>	<u>Bottom</u>	<u>Contents</u>
Surface	San Jose	3392'	aquifer
Ojo Alamo	3392'	3536'	aquifer
Kirtland	3536'	3630'	
Fruitland	3630'	3980'	
Pictured Cliffs	3980'	4068'	gas
Lewis	4068'	4435'	gas
Intermediate TD	4168'		
Huerfanito Bentonite	4435'	4943'	
Chacra	4943'	5682'	
Massive Cliff House	5682'	5800'	gas
Menefee	5800'	6123'	gas
Massive Point Lookout	6123'		gas
Total Depth	6523'		

Logging Program:

Cased hole logging - Gamma Ray Neutron
Coring/DST - none

Mud Program:

<u>Interval</u>	<u>Type</u>	<u>Weight</u>	<u>Vis.</u>	<u>Fluid Loss</u>
0- 200'	Spud	8.4-9.0	40-50	no control
200-4168'	LSND	8.4-9.0	30-60	no control
4168-6523'	Gas/Mist	n/a	n/a	n/a

Pit levels will be visually monitored to detect gain or loss of fluid control.

Casing Program (as listed, the equivalent, or better):

<u>Hole Size</u>	<u>Depth Interval</u>	<u>Csg.Size</u>	<u>Wt.</u>	<u>Grade</u>
12 1/4"	0' - 200'	9 5/8"	32.3#	H-40
8 3/4"	0' - 4168'	7"	20.0#	J-55
6 1/4"	4068' - 6523'	4 1/2"	10.5#	J-55

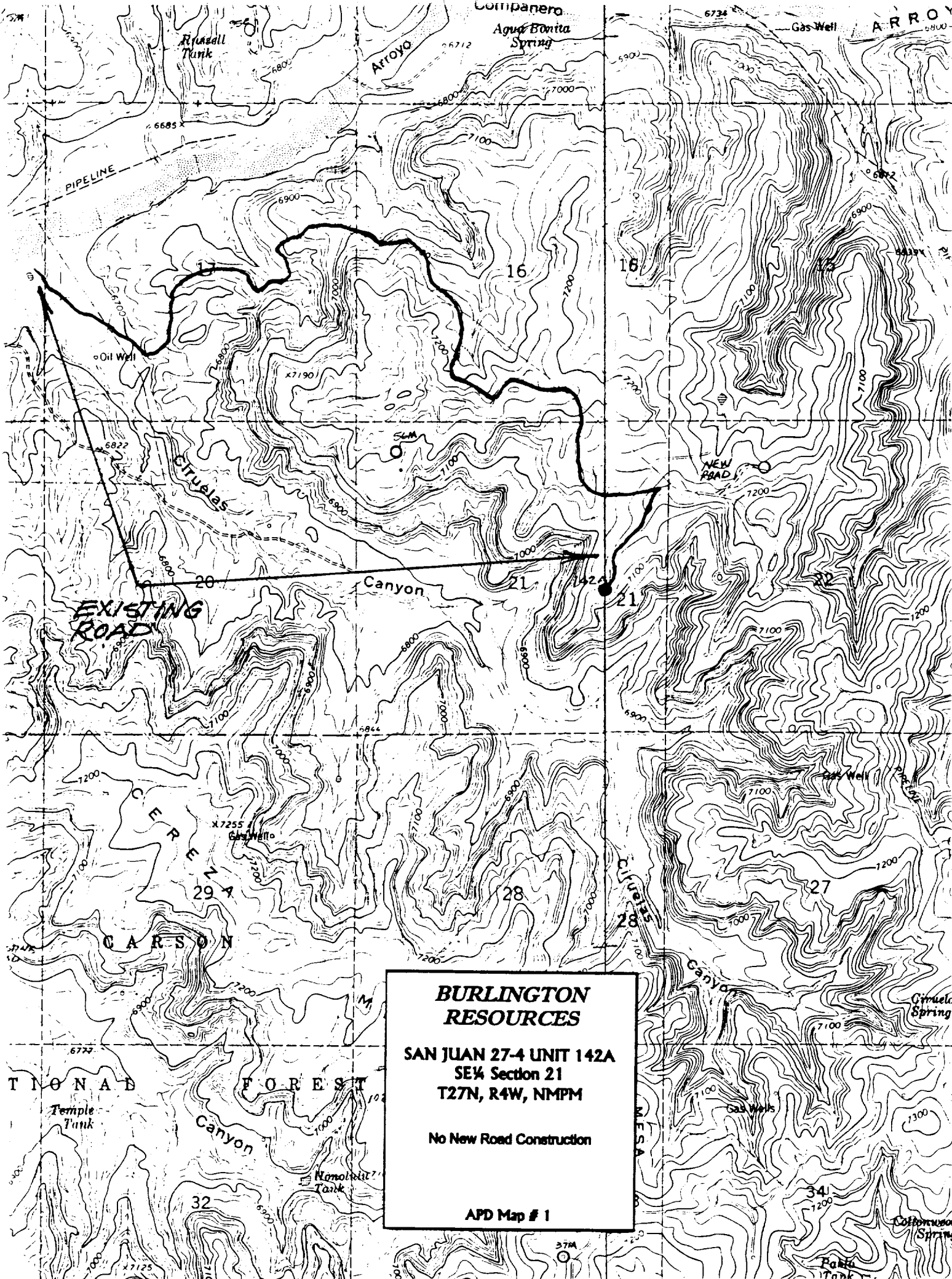
Tubing Program:

0' - 6523' 2 3/8" 4.7# J-55

BOP Specifications, Wellhead and Tests:

Surface to Intermediate TD -

11" 2000 psi minimum double gate BOP stack (Reference Figure #1).
After nipple-up prior to drilling out surface casing, rams and casing will be tested to 600 psi for 30 minutes.



**BURLINGTON
RESOURCES**

**SAN JUAN 27-4 UNIT 142A
SE 1/4 Section 21
T27N, R4W, NMPM**

No New Road Construction

APD Map # 1



NEW MEXICO ENERGY, MINERALS
& NATURAL RESOURCES DEPARTMENT

OIL CONSERVATION DIVISION
2040 South Pacheco Street
Santa Fe, New Mexico 87505
(505) 827-7131

June 29, 1998

#142A
21-27-4

Burlington Resources Oil & Gas Company
P. O. Box 4289
Farmington, New Mexico 87499-4289
Attention: Peggy Bradfield

RECEIVED
JUL 6 1998

OIL CON. DIV. Administrative Order NSL-4079
DATE 3

Dear Ms. Bradfield:

Reference is made to your application dated June 22, 1998 for an exception to the well location requirements provided within the "Special Rules and Regulations for the Blanco-Mesaverde Pool," as promulgated by Division Order No. R-10987, for a non-standard Blanco-Mesaverde infill gas well location in an existing standard 320-acre stand-up gas spacing and proration unit for the Blanco-Mesaverde Pool comprising the E/2 of Section 21, Township 27 North, Range 4 West, NMPM, Rio Arriba County, New Mexico. This unit is currently dedicated to Burlington Resources Oil & Gas Company's San Juan "27-4" Unit Well No. 142 (API No. 30-039-22803), located at a standard gas well location 860 feet from the North line and 850 feet from the East line (Unit A) of Section 21.

The application has been duly filed under the provisions of Rules 104.F and 605.B of the Rules and Regulations of the New Mexico Oil Conservation Division ("Division").

By the authority granted me under the provisions of Division Rule 104.F(2), the following described well to be drilled at an unorthodox infill gas well location in said Section 21 is hereby approved:

**San Juan "27-4" Unit Well No. 142-A
2450' FSL & 1010' FEL (Unit I)**

Further, both of the aforementioned San Juan "27-4" Unit Well Nos. 142 and 142-A and existing gas spacing and proration unit will be subject to all existing rules, regulations, policies, and procedures applicable to prorated gas pools in Northwest, New Mexico.

Sincerely,


Lori Wrotenbery
Director

LW/MES/kv

cc: New Mexico Oil Conservation Division - Aztec
U. S. Bureau of Land Management - Farmington

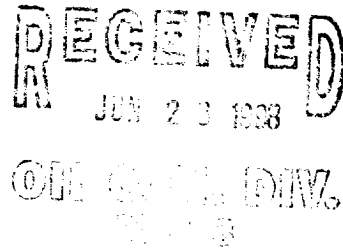
BURLINGTON RESOURCES

SAN JUAN DIVISION

June 22, 1998

Sent Federal Express

Ms. Lori Wrotenbery, Director
New Mexico Oil Conservation Division
2040 South Pacheco
Santa Fe, New Mexico 87505



Re: San Juan 27-4 Unit #142A
2450'FSL, 1010'FEL, Section 21, T-27-N, R-4-W, Rio Arriba County, NM
30-039-not assigned

Dear Ms. Wrotenbery:

Burlington Resources is applying for administrative approval of an unorthodox gas well location for the Blanco Mesa Verde pool. This application for the referenced location is for topographic and archaeological reasons, and especially at the request of the U.S. Forest Service that is the surface owner.

Production from the Blanco Mesa Verde is to be included in a standard 320 acre gas spacing and proration unit comprising of the east half (E/2) of Section 21 which is currently dedicated to the San Juan 27-4 Unit #142 (30-039-22803) located at 860'FNL, 850'FEL of Section 21.

The following attachments are for your review:

1. Application for Permit to Drill.
2. Completed C-102 at referenced location.
3. Offset operators/owners plat.
4. 7.5 minute topographic map, and enlargement of the map to define topographic features.

We appreciate your earliest consideration of this application.

Sincerely,

Peggy Bradfield
Regulatory/Compliance Administrator

xc: NMOCD - Aztec District Office
Bureau of Land Management - Farmington District Office

UNITED STATES
DEPARTMENT OF THE INTERIOR
BUREAU OF LAND MANAGEMENT

APPLICATION FOR PERMIT TO DRILL, DEEPEN, OR PLUG BACK

1a. Type of Work
DRILL

5. Lease Number
SF-080674
Unit Reporting Number
891001054A
If Indian, All. or Tribe

1b. Type of Well
GAS

RECEIVED
JUN 23 1998

2. Operator
BURLINGTON
RESOURCES Oil & Gas Company

7. Unit Agreement Name
San Juan 27-4 Unit

3. Address & Phone No. of Operator
PO Box 4289, Farmington, NM 87499
(505) 326-9700

8. Farm or Lease Name
San Juan 27-4 Unit
9. Well Number
142A

4. Location of Well
2450' FSL, 1010' FEL
Latitude 36° 33' 30", Longitude 107° 15' 02"

10. Field, Pool, Wildcat
Blanco MV
11. Sec., Twn, Rge, Mer. (NMPM)
Sec 21, T-27-N, R-4-W
API # 30-039-

14. Distance in Miles from Nearest Town
60 miles to Bloomfield

12. County
RA
13. State
NM

15. Distance from Proposed Location to Nearest Property or Lease Line
1010'

16. Acres in Lease

17. Acres Assigned to Well
320 E/2

18. Distance from Proposed Location to Nearest Well, Drlg, Compl. or Applied for on this Lease

19. Proposed Depth
6523

20. Rotary or Cable Tools
Rotary

21. Elevations (DF, FT, GR, Etc.)
7111' GR

22. Approx. Date Work will Start

23. Proposed Casing and Cementing Program
See Operations Plan attached

24. Authorized by: *Donna Brantfield*
Regulatory/Compliance Administrator

5-20-98
Date

PERMIT NO. _____

APPROVAL DATE _____

APPROVED BY _____

TITLE _____

DATE _____

Archaeological Report to be submitted

Threatened and Endangered Species Report to be submitted

NOTE: This format is issued in lieu of U.S. BLM Form 3160-3

Title 18 U.S.C. Section 1001, makes it a crime for any person knowingly and willfully to make to any department or agency of the United States any false, fictitious or fraudulent statements or presentations as to any matter within its jurisdiction.

District I
PO Box 1980, Hobbs NM 88241-1980
District II
PO Drawer KKK, Artesia, NM 87211-0719
District III
1000 Rio Brazos Rd., Aztec, NM 87410
District IV
PO Box 2088, Santa Fe, NM 87504-2088

State of New Mexico
Energy, Minerals & Natural Resources Department

OIL CONSERVATION DIVISION
PO Box 2088
Santa Fe, NM 87504-2088

Form
Revised February
Instructions
Submit to Appropriate District
State Lease -
Fee Lease -

☐ AMENDED

WELL LOCATION AND ACREAGE DEDICATION PLAT

1 API Number 30-039-		2 Pool Code 72319		3 Pool Name Blanco Mesaverde	
4 Property Code 7452		5 Property Name SAN JUAN 27-4 UNIT			6 Well Name # 142
7 OGRID No. 14538		8 Operator Name BURLINGTON RESOURCES OIL & GAS COMPANY			9 Elevation 711

10 Surface Location

UL or Lot No. I	Section 21	Township 27 N	Range 4 W	Lot Idn	Feet from the 2450	North/South line SOUTH	Feet from the 1010	East/West line EAST	County RIO
--------------------	---------------	------------------	--------------	---------	-----------------------	---------------------------	-----------------------	------------------------	---------------

11 Bottom Hole Location If Different From Surface

UL or lot no.	Section	Township	Range	Lot Idn	Feet from the	North/South line	Feet from the	East/West line	County
---------------	---------	----------	-------	---------	---------------	------------------	---------------	----------------	--------

12 Dedicated Acres E/320	13 Joint or Infill	14 Consolidation Code	15 Order No.
-----------------------------	--------------------	-----------------------	--------------

NO ALLOWABLE WILL BE ASSIGNED TO THIS COMPLETION UNTIL ALL INTEREST HAVE BEEN CONSOLIDATED
OR A NON-STANDARD UNIT HAS BEEN APPROVED BY THE DIVISION

16		5258'(R)		17 OPERATOR CERTIFICATE I hereby certify that the information contained herein is true and complete to the best of my knowledge. Signature: <u>Peggy Bradfield</u> Printed Name: <u>Peggy Bradfield</u> Regulatory Administrative Title: <u>5-20-98</u> Date: <u>5-20-98</u>	
RECEIVED JUN 23 1998 OIL CON. DIV. BUL 3		NMSF - 080674		18 SURVEYOR CERTIFICATE I hereby certify that the well location shown was plotted from field notes of actual surveys or under my supervision, and that the same are correct to the best of my belief. Date of Survey: <u>April 21, 1998</u> Signature and Seal of Professional Surveyor: <u>GARY B. YANN</u> 7016 Certificate Number	
5280'(R)	21	1010'	2450'	5280'(R)	
		5271'(R)			

OPERATIONS PLAN

Well Name: San Juan 27-4 Unit #142A
Location: 2450'FSL, 1010'FEL Section 21, T-27-N, R-4-W
Rio Arriba County, New Mexico
Latitude 36° 33'30", Longitude 107° 15'02"
Formation: Blanco Mesa Verde
Elevation: 7111'GL

<u>Formation Tops:</u>	<u>Top</u>	<u>Bottom</u>	<u>Contents</u>
Surface	San Jose	3392'	aquifer
Ojo Alamo	3392'	3536'	aquifer
Kirtland	3536'	3630'	
Fruitland	3630'	3980'	
Pictured Cliffs	3980'	4068'	gas
Lewis	4068'	4435'	gas
Intermediate TD	4168'		
Huerfanito Bentonite	4435'	4943'	
Chacra	4943'	5682'	
Massive Cliff House	5682'	5800'	gas
Menefee	5800'	6123'	gas
Massive Point Lookout	6123'		gas
Total Depth	6523'		

Logging Program:

Cased hole logging - Gamma Ray Neutron

Coring/DST - none

Mud Program:

<u>Interval</u>	<u>Type</u>	<u>Weight</u>	<u>Vis.</u>	<u>Fluid Loss</u>
0- 200'	Spud	8.4-9.0	40-50	no control
200-4168'	LSND	8.4-9.0	30-60	no control
4168-6523'	Gas/Mist	n/a	n/a	n/a

Pit levels will be visually monitored to detect gain or loss of fluid control.

Casing Program (as listed, the equivalent, or better):

<u>Hole Size</u>	<u>Depth Interval</u>	<u>Csq. Size</u>	<u>Wt.</u>	<u>Grade</u>
12 1/4"	0' - 200'	9 5/8"	32.3#	H-40
8 3/4"	0' - 4168'	7"	20.0#	J-55
6 1/4"	4068' - 6523'	4 1/2"	10.5#	J-55

Tubing Program:

0' - 6523' 2 3/8" 4.7# J-55

BOP Specifications, Wellhead and Tests:

Surface to Intermediate TD -

11" 2000 psi minimum double gate BOP stack (Reference Figure #1).
After nipple-up prior to drilling out surface casing, rams and casing will be tested to 600 psi for 30 minutes.

BOP Specifications, Wellhead and Tests (cont'd):

Intermediate TD to Total Depth -

11" 2000 psi minimum double gate BOP stack (Reference Figure #1).
After nipple-up prior to drilling out intermediate casing, rams
and casing will be tested to 1500 psi for 30 minutes.

Surface to Total Depth -

2" nominal, 2000 psi minimum choke manifold (Reference Figure #3).

Completion Operations -

7 1/16" 2000 psi double gate BOP stack (Reference Figure #2).
After nipple-up prior to completion, pipe rams, casing and liner
top will be tested to 2000 psi for 15 minutes.

Wellhead -

9 5/8" x 7" x 2 3/8" x 2000 psi tree assembly.

General -

- Pipe rams will be actuated once each day and blind rams will be actuated once each trip to test proper functioning.
- An upper kelly cock valve with handle available and drill string valves to fit each drill string will be available on the rig floors at all times.
- BOP pit level drill will be conducted weekly for each drill crew.
- All BOP tests & drills will be recorded in daily drilling reports.
- Blind and pipe rams will be equipped with extension hand wheels.

Cementing:

9 5/8" surface casing - cement with 163 sx Class "B" cement with 1/4# flocele/sx and 3% calcium chloride (188 cu.ft. of slurry, 200% excess to circulate to surface). WOC 8 hrs. Test casing to 600 psi for 30 minutes.

Saw tooth guide shoe on bottom. Bowspring centralizers will be run in accordance with Onshore Order #2.

7" intermediate casing -

Lead w/393 sx Class "B" w/3% econolite, 10# gilsonite/sx and 1/2# flocele/sx. Tail w/90 sx 50/50 Class "B" Poz w/2% gel, 2% calcium chloride, 0.5# flocele/sx, and 10# gilsonite/sx (986 cu.ft. of slurry, 75% excess to circulate to surface.) WOC minimum of 8 hours before drilling out intermediate casing. If cement does not circulate to surface, a CBL will be run to determine TOC. Test casing to 1500 psi for 30 minutes.

Cement nose guide shoe on bottom with float collar spaced on top of shoe joint. Bowspring centralizers spaced every other joint off bottom, to the base of the Ojo Alamo at 3536'. Two turbolating centralizers at the base of the Ojo Alamo at 3536'. Bowspring centralizers spaced every fourth joint from the base of the Ojo Alamo to the base of the surface casing.

4 1/2" Production Liner -

Cement to circulate liner top. Cement with 289 sx 50/50 Class "B" Poz w/2% gel, 1/4# flocele/sx, 5# gilsonite/sx and 0.3% fluid loss additive (353 cu.ft., 40% excess to circulate liner top). WOC a minimum of 18 hrs prior to completing.

Cement nose guide shoe on bottom with float collar spaced on top of shoe joint. The liner hanger will have a rubber packoff.

- If hole conditions permit, an adequate water spacer will be pumped ahead of each cement job to prevent cement/ mud contamination or cement hydration.
- The pipe will be rotated and/or reciprocated, if hole conditions permit.

Special Drilling Operations (Gas/Mist Drilling):


The following equipment will be operational while gas/mist drilling:

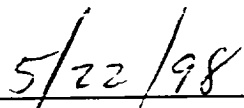
- An anchored blooie line will be utilized to discharge all cuttings and circulating medium to the blow pit a minimum of 100' from the wellhead.
- The blooie line will be equipped with an automatic igniter or pilot light.
- Compressors will be located a minimum of 100' from the wellhead in the opposite direction from the blooie line.
- Engines will have spark arresters or water cooled exhaust.
- The rotating head will be properly lubricated and maintained.
- A float valve will be utilized above the bit.
- Mud circulating equipment, water, and mud materials will be sufficient to maintain control of the well.

Additional Information:

- The Mesa Verde formation will be completed.
- No abnormal temperatures or hazards are anticipated.
- Anticipated pore pressures are as follows:

Fruitland Coal	800 psi
Pictured Cliffs	800 psi
- Sufficient LCM will be added to the mud system to maintain well control, if lost circulation is encountered below the top of the Pictured Cliffs.
- The east half of the section is dedicated to the Mesa Verde.
- This gas is dedicated.


Drilling Engineer


Date

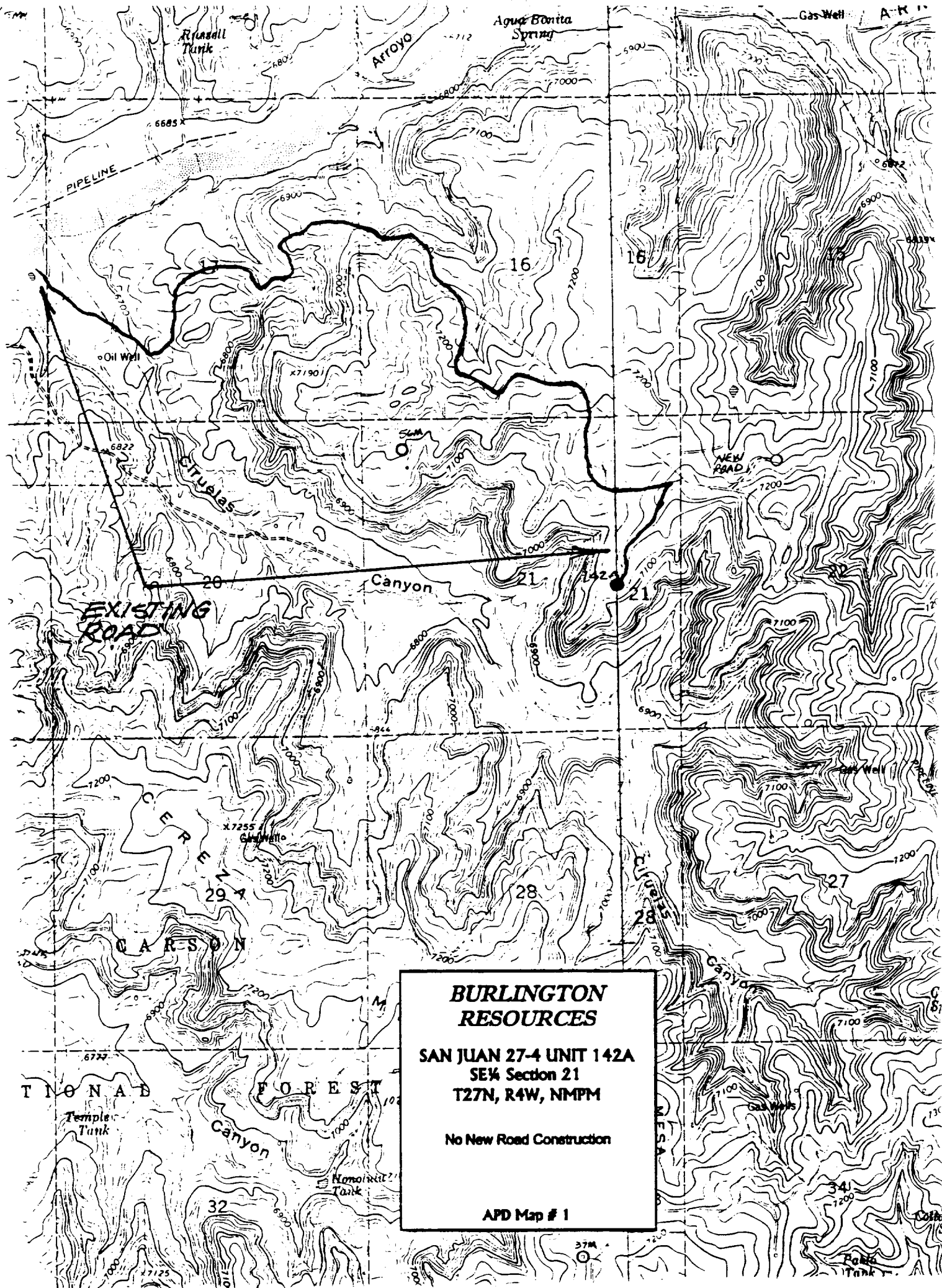
BURLINGTON RESOURCES

San Juan 27-4 Unit #142A
Multi-Point Surface Use Plan

1. Existing Roads - Refer to Map No. 1. Existing roads used to access the proposed location will be properly maintained for the duration of the project. Bureau of Land Management right-of-way has been applied for as shown on Map No. 1.
2. Planned Access Road - Refer to Map No. 1. None required.
3. Location of Existing Wells - Refer to Map No. 1A.
4. Location of Existing and/or Proposed Facilities if Well is Productive -
 - a. On the Well Pad - Refer to Plat No. 1, anticipated production facilities plat.
 - b. Off the Well Pad - Anticipated pipeline facilities as shown on the attached plat from Williams Field Service.
5. Location and Type of Water Supply - Water will be hauled by truck for the proposed project and will be obtained from 44 Crossing Water Hole located NE Section 18, T-27-N, R-4-W, New Mexico.
6. Source of Construction Materials - If construction materials are required for the proposed project, such materials will be obtained from a commercial quarry.
7. Methods of Handling Waste Materials - All garbage and trash materials will be removed from the site for proper disposal. A portable toilet will be provided for human waste and serviced in a proper manner. If liquids are left in the reserve pit after completion of the project, the pit will be fenced until the liquids have had adequate time to dry. The location clean-up will not take place until such time as the reserve pit can be properly covered over to prevent run-off from carrying waste materials into the watershed. Reserve pits will be lined as needed with either 12 mil bio-degradable plastic liner or a bentonite liner. All earthen pits will be so constructed as to prevent leakage from occurring; no earthen pit will be located on natural drainage. Generation of hazardous waste is not anticipated. Federal regulations will be adhered to regarding handling and disposal of such waste if so generated.
8. Ancillary Facilities - None anticipated.
9. Wellsite Layout - Refer to the location diagram and to the wellsite cut and fill diagram (Figure No. 4). The blow pit will be constructed with a 2'/160' grade to allow positive drainage to the reserve pit and prevent standing liquids in the blow pit.

10. Plans for Restoration of the Surface - After completion of the proposed project, the location will be cleaned and leveled. The location will be left in such a condition that will enable reseeding operations to be carried out. Seed mixture as designated by the responsible government agency will be used. The reseeding operations will be performed during the time period set forth by the responsible government agency. The permanent location facilities will be painted as designated by the responsible government agency.
11. Surface Ownership - Carson National Forest
12. Other Information - Environmental stipulations as outlined by the responsible government agency will be adhered to. Refer to the archaeological report for a description of the topography, flora, fauna, soil characteristics, dwellings, historical and cultural sites.
13. Operator's Representative and Certification - Burlington Resources Oil & Gas Company Regional Drilling Manager, Post Office Box 4289, Farmington, NM 87499, telephone (505) 326-9700. I hereby certify that I, or persons under my direct supervision, have inspected the proposed drill site and access route; that I am familiar with the conditions which presently exist; that the statements made in this plan, are to the best of my knowledge, true and correct; and that the work associated with the operations proposed herein will be performed by Burlington Resources Oil and Gas Company and its contractors and subcontractors in conformity with this plan and the terms and conditions under which it is approved.


Regulatory/Compliance Administrator 5-20-98
Date

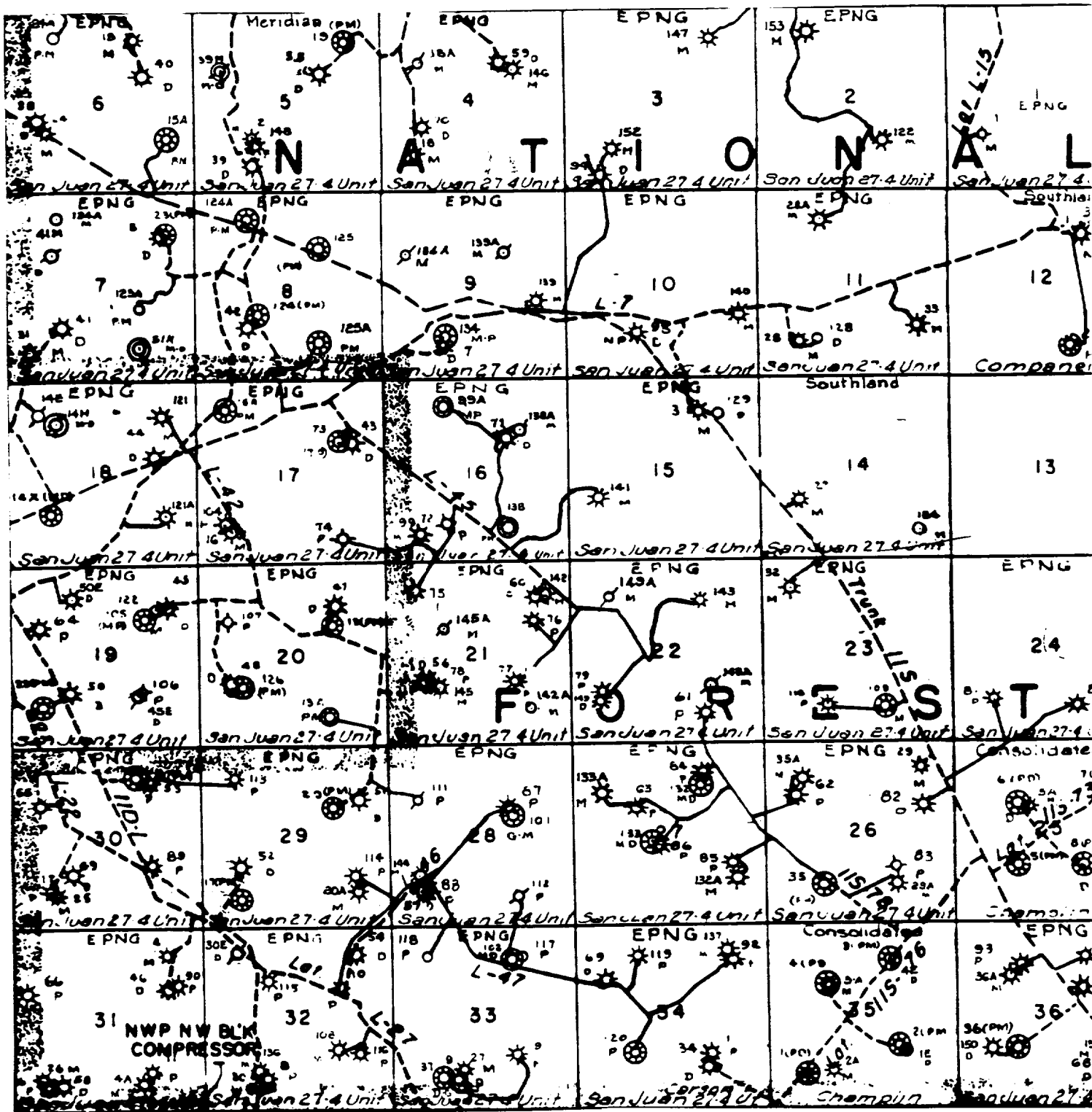


**BURLINGTON
RESOURCES**

**SAN JUAN 27-4 UNIT 142A
SE¼ Section 21
T27N, R4W, NMPM**

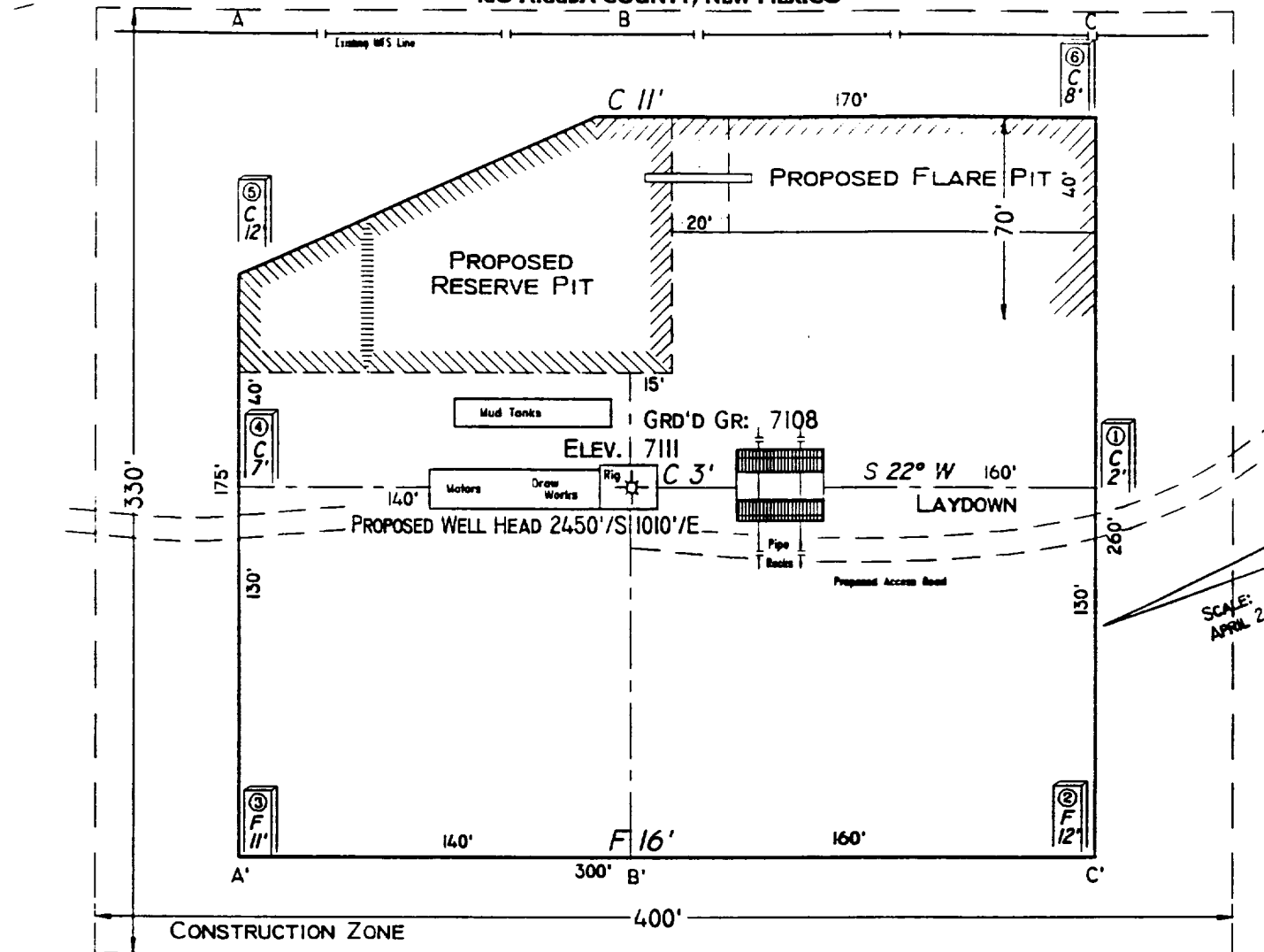
No New Road Construction

APD Map # 1

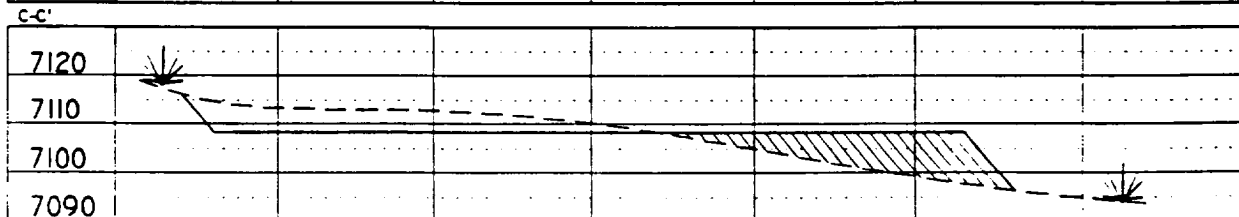
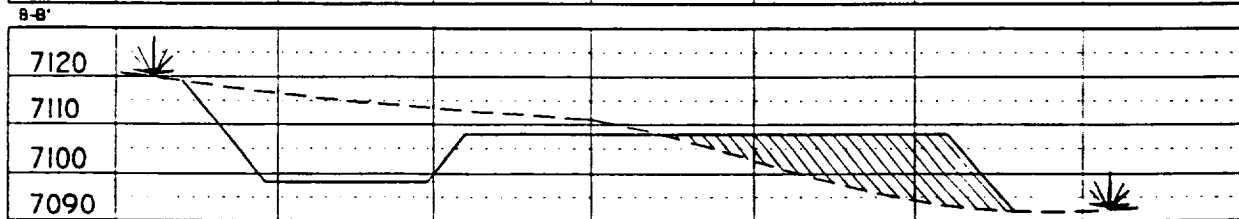
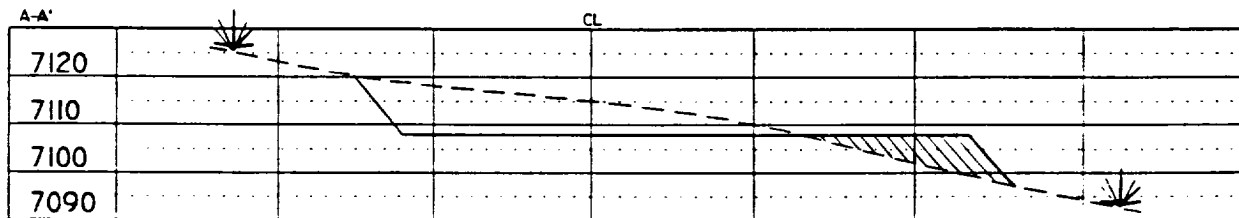


MERIDIAN OIL INC.
 Pipeline Map
 T-27-N, R-04-W
 Rio Arriba County, New Mexico
 Map 1A
 San Juan 27-4 Unit 142A

PAD LAYOUT PLAN & PROFILE
BURLINGTON RESOURCES OIL & GAS COMPANY
SAN JUAN 27-4 UNIT 142A
2450' F/SL 1010' F/EL
SEC. 21, T27N, R4W, N.M.P.M.
RIO ARriba COUNTY, NEW MEXICO



NOTES: Reserve Pit Dike - Should be 8' above Deep side (overflow - 3' wide @ 1' above shallow side)
 Flare Pit - Overflow pipe should be halfway between top and bottom and extend over plastic liner and into flare pit.



SCALE: 1"=60'-HORIZ.
 1"=40'-VERT.

NOTE: Contractor sr
 call One-Call for loc
 of any marked or unma
 buried pipelines or cable
 well pad and/or access
 at least two (2) working
 prior to construction.

VANN SURVE
 304 N. Loc
 Farmington,

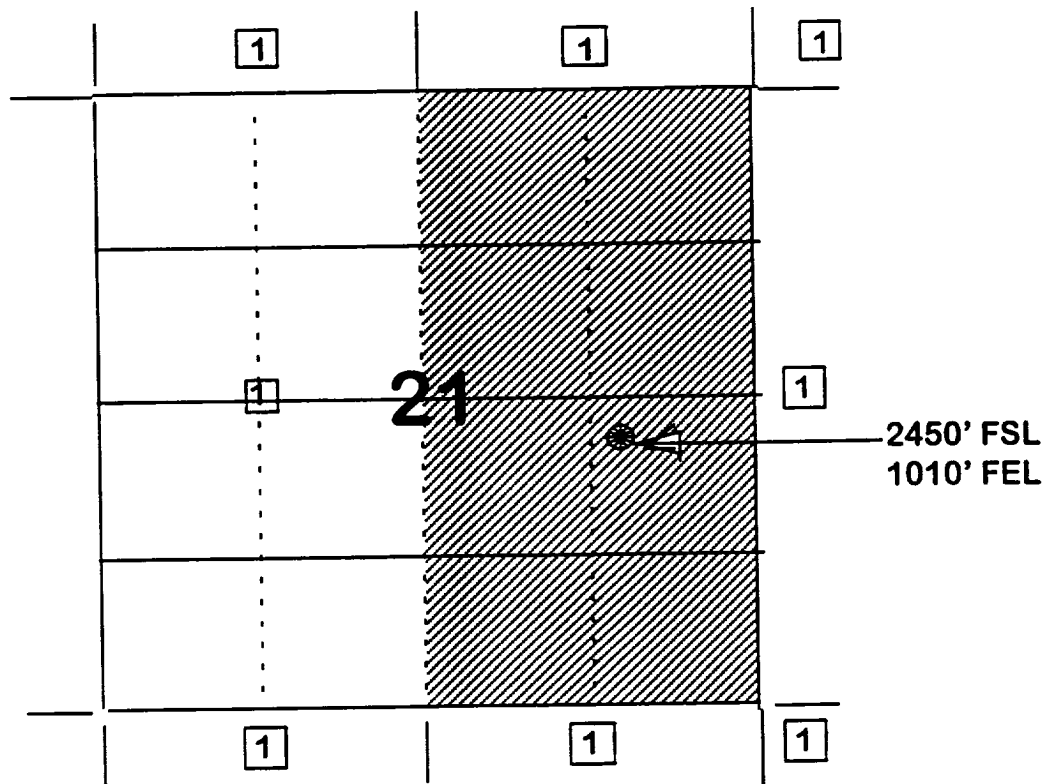
BURLINGTON RESOURCES OIL AND GAS COMPANY

**San Juan 27-4 Unit #142A
OFFSET OPERATOR \ OWNER PLAT**

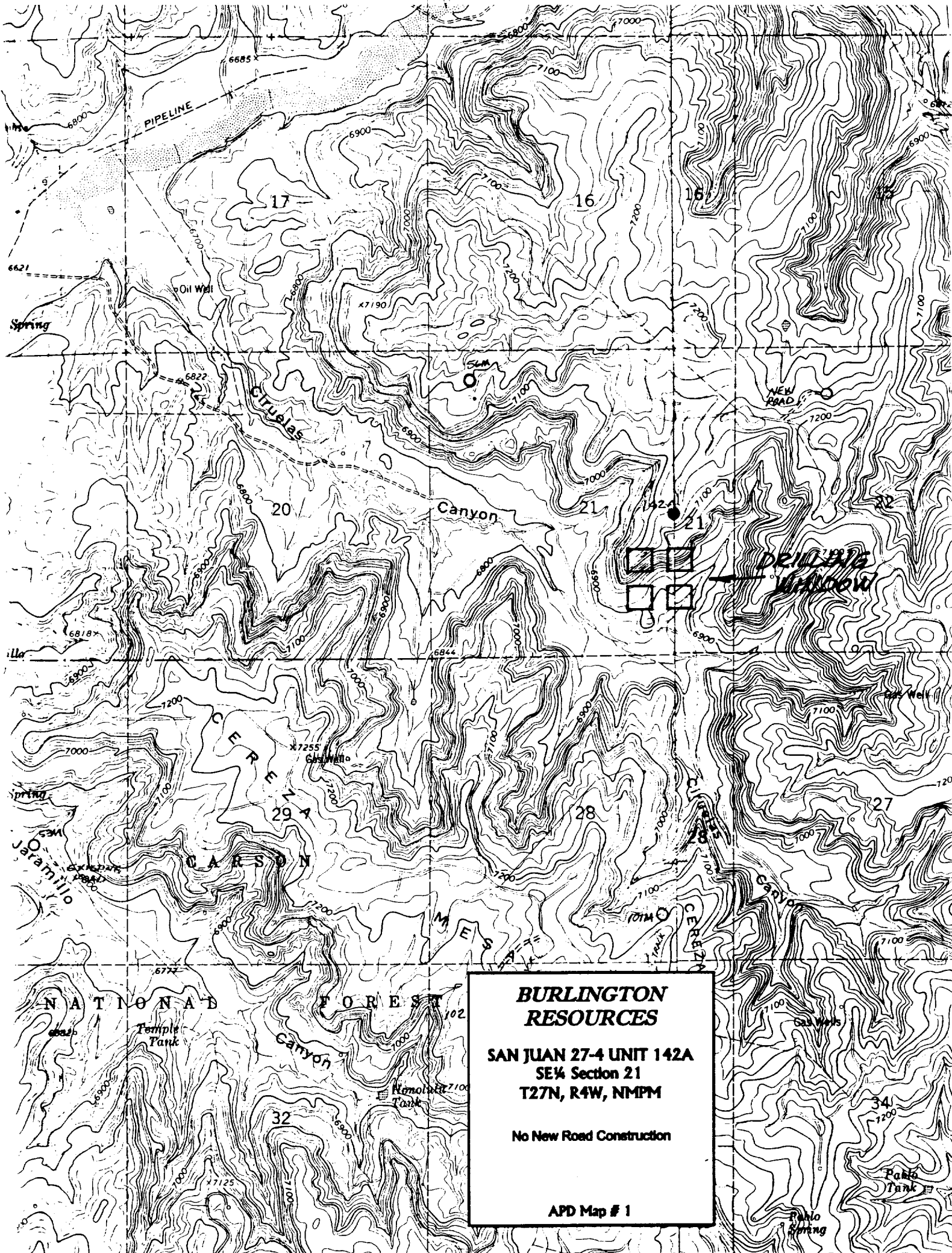
Mesaverde Formation

Nonstandard Location

Township 27 North, Range 4 West



1) Burlington Resources



**BURLINGTON
RESOURCES**

**SAN JUAN 27-4 UNIT 142A
SE 1/4 Section 21
T27N, R4W, NMPM**

No New Road Construction

APD Map # 1

