

UNITED STATES  
DEPARTMENT OF THE INTERIOR  
BUREAU OF LAND MANAGEMENT

APPLICATION FOR PERMIT TO DRILL, DEEPEN, OR PLUG BACK

1a. Type of Work DRILL	5. Lease Number SF-080673
1b. Type of Well GAS	6. If Indian, All. or Tribe
2. Operator <b>BURLINGTON RESOURCES</b> Oil & Gas Company	9. Unit Agreement Name San Juan 27-4 Unit
3. Address & Phone No. of Operator PO Box 4289, Farmington, NM 87499 (505) 326-9700	8. Farm or Lease Name San Juan 27-4 Unit 9. Well Number 5M
4. Location of Well 1470' FSL, 840' FEL Latitude 36° 35' 04", Longitude 107° 17' 08"	10. Field, Pool, Wildcat Blanco MV/Basin Dk 11. Sec., Twn, Rge, Mer. (NMPM) Sec 7, T-27-N, R-4-W API # 30-039-
14. Distance in Miles from Nearest Town 60 miles to Bloomfield	12. County RA 13. State NM
15. Distance from Proposed Location to Nearest Property or Lease Line 840'	17. Acres Assigned to Well E/320 E/2 3 20
16. Acres in Lease	
18. Distance from Proposed Location to Nearest Well, Drlg, Compl, or Applied for on this Lease	
19. Proposed Depth 8262 This action is subject to technical and procedural review pursuant to 43 CFR 3162.3 and appeal pursuant to 43 CFR 3165.4.	20. Rotary or Cable Tools Rotary
21. Elevations (DF, FT, GR, Etc.) 6950' GR	22. Approx. Date Work will Start
23. Proposed Casing and Cementing Program See Operations Plan attached	DRILLING OPERATIONS AUTHORIZED ARE SUBJECT TO COMPLIANCE WITH ATTACHED "GENERAL REQUIREMENTS"
24. Authorized by: <u>[Signature]</u> Regulatory/Compliance Administrator	5-20-98 Date

PERMIT NO. \_\_\_\_\_

APPROVAL DATE SEP 10 1998

APPROVED BY /S/ Duane W. Spencer

TITLE \_\_\_\_\_

DATE SEP 10 1998

Archaeological Report to be submitted

Threatened and Endangered Species Report to be submitted

NOTE: This format is issued in lieu of U.S. BLM Form 3160-3

Title 18 U.S.C. Section 1001, makes it a crime for any person knowingly and willfully to make to any department or agency of the United States any false, fictitious or fraudulent statements or presentations as to any matter within its jurisdiction.

NMOCD

District I  
PO Box 1980, Hobbs NM 88241-1980  
District II  
PO Drawer KK, Artesia, NM 87211-0719  
District III  
1000 Rio Brazos Rd., Aztec, NM 87410  
District IV  
PO Box 2088, Santa Fe, NM 87504-2088

State of New Mexico  
Energy, Minerals & Natural Resources Department

OIL CONSERVATION DIVISION  
PO Box 2088  
Santa Fe, NM 87504-2088

Form C  
Revised February 21.  
Instructions on  
Submit to Appropriate District C  
State Lease - 4 C  
Fee Lease - 3 C

58 JUN -8 PM 4:13

☐ AMENDED REF

WELL LOCATION AND ACREAGE DEDICATION PLAT

<sup>1</sup> API Number 30-039-25966	<sup>2</sup> Pool Code 72319/71599	<sup>3</sup> Pool Name Blanco Mesaverde/Basin Dakota
<sup>4</sup> Property Code 7452	<sup>5</sup> Property Name SAN JUAN 27-4 UNIT	<sup>6</sup> Well Number # 5M
<sup>7</sup> OGRID No. 14538	<sup>8</sup> Operator Name BURLINGTON RESOURCES OIL & GAS COMPANY	<sup>9</sup> Elevation 6950

<sup>10</sup> Surface Location

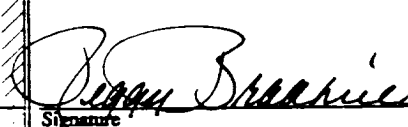
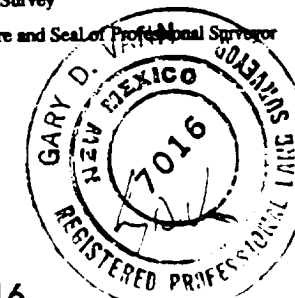
UL or Lot No.	Section	Township	Range	Lot Idn	Feet from the	North/South line	Feet from the	East/West line	County
I	7	27 N	4 W		1470	SOUTH	840	EAST	RIO AR

<sup>11</sup> Bottom Hole Location If Different From Surface

UL or lot no.	Section	Township	Range	Lot Idn	Feet from the	North/South line	Feet from the	East/West line	County

<sup>12</sup> Dedicated Acres MV-E/320 DK-E/320	<sup>13</sup> Joint or Infill	<sup>14</sup> Consolidation Code	<sup>15</sup> Order No.
---	-------------------------------	----------------------------------	-------------------------

NO ALLOWABLE WILL BE ASSIGNED TO THIS COMPLETION UNTIL ALL INTEREST HAVE BEEN CONSOLIDATED  
OR A NON-STANDARD UNIT HAS BEEN APPROVED BY THE DIVISION

BLM Record 2602.38' 2783.88'	Lot 1	5298'(R)	7	NMSF - 080673	5290'(R)	<sup>17</sup> OPERATOR CERTIFICATE I hereby certify that the information contained is true and complete to the best of my knowledge and belief.  Signature Peggy Bradfield Printed Name Regulatory Administrator Title 5-20-98 Date
	Lot 2	RECEIVED SEP 14 1998 OIL CON. DIV. DIST. 3				
	Lot 3					
	Lot 4					
		5291'(R)				<sup>18</sup> SURVEYOR CERTIFICATE I hereby certify that the well location shown on this plat was plotted from field notes of actual surveys made or under my supervision, and that the same is correct to the best of my belief. February 17, 1998 Date of Survey Signature and Seal of Professional Surveyor  7016 Certificate Number

## OPERATIONS PLAN

Well Name: San Juan 27-4 Unit #5M  
Location: 1470' FSL, 840' FEL Sec 7, T-27-N, R-4-W  
Rio Arriba County, NM  
Latitude 36° 32' 04", Longitude 107° 17' 08"  
Formation: Blanco Mesa Verde/Basin Dakota  
Elevation: 6950' GL

<u>Formation Tops:</u>	<u>Top</u>	<u>Bottom</u>	<u>Contents</u>
Surface	San Jose	3215'	
Ojo Alamo	3215'	3389'	aquifer
Kirtland	3389'	3470'	
Fruitland	3470'	3818'	gas
Pictured Cliffs	3818'	3896'	gas
Lewis	3896'	4332'	gas
Intermediate TD	3996'		
Huerfano Bentonite	4332'	4771'	gas
Chacra	4771'	5486'	
Massive Cliff House	5486'	5672'	gas
Menefee	5672'	5960'	gas
Massive Point Lookout	5960'	6500'	gas
Mancos Shale	6500'	7144'	
Gallup	7144'	7922'	gas
Greenhorn	7922'	7982'	gas
Dakota	7982'		gas
TD (4 1/2" liner)	8262'		

### Logging Program:

Cased hole - CBL - TD to 200' above TOC, GR/CNL across MV/Dk

### Mud Program:

<u>Interval</u>	<u>Type</u>	<u>Weight</u>	<u>Vis.</u>	<u>Fluid Loss</u>
0- 200'	Spud	8.4-9.0	40-50	no control
200-3996'	LSND	8.4-9.0	30-60	no control
3996-8262'	Gas	n/a	n/a	n/a

Pit levels will be visually monitored to detect gain or loss of fluid control.

### Casing Program (as listed, the equivalent, or better):

<u>Hole Size</u>	<u>Depth Interval</u>	<u>Csq. Size</u>	<u>Wt.</u>	<u>Grade</u>
12 1/4"	0' - 200'	9 5/8"	32.3#	WC-50
8 3/4"	0' - 3996'	7"	20.0#	J-55
6 1/4"	3896' - 8262'	4 1/2"	10.5#	J-55

### Tubing Program:

0' - 8262'      2 3/8"      4.70# EUE

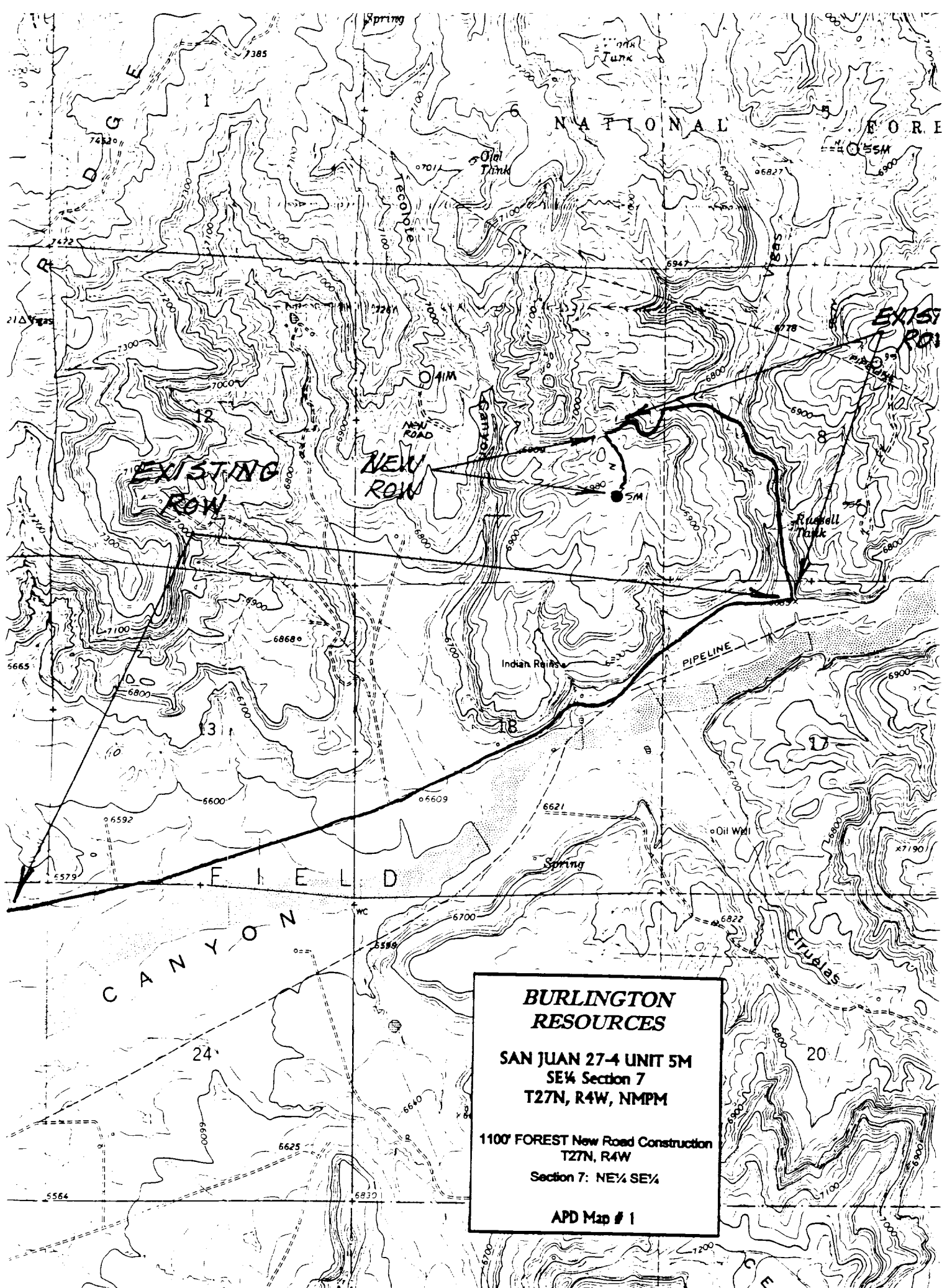
### BOP Specifications, Wellhead and Tests:

#### Surface to Intermediate TD -

11" 2000 psi minimum double gate BOP stack (Reference Figure #1).  
After nipple-up prior to drilling out surface casing, rams and casing will be tested to 600 psi for 30 minutes.

#### Intermediate TD to Total Depth -

11" 2000 psi minimum double gate BOP stack (Reference Figure #1).  
After nipple-up prior to drilling out intermediate casing, rams and casing will be tested to 1500 psi for 30 minutes.



**BURLINGTON  
RESOURCES**

**SAN JUAN 27-4 UNIT 5M  
SE¼ Section 7  
T27N, R4W, NMPM**

**1100' FOREST New Road Construction  
T27N, R4W**

**Section 7: NE¼ SE¼**

**APD Map # 1**