

UNITED STATES  
DEPARTMENT OF THE INTERIOR  
BUREAU OF LAND MANAGEMENT

(Other instructions on  
reverse side)

FORM APPROVED  
OMB NO. 1004-0138  
Expires February 28, 1995

APPLICATION FOR PERMIT TO DRILL OR DEEPEN

1a. TYPE OF WORK

DRILL ☒

DEEPEN ☐

b. TYPE OF WELL

OIL  
WELL ☐

GAS  
WELL ☒

OTHER

SINGLE  
ZONE ☒

MULTIPLE  
ZONE ☐

2. NAME OF OPERATOR

Conoco Inc.

5073

a. ADDRESS AND TELEPHONE NO

10 Desta Dr. Ste 430E, Midland, Tx. 79705-4500

4. LOCATION OF WELL (Report location clearly and in accordance with any State requirements)

At surface

2005' FNL & 2170' FWL

At proposed prod. zone

2005' ENL & 2170' FWL

14. DISTANCE IN MILES AND DIRECTION FROM NEAREST TOWN OR POST OFFICE\*

5. DISTANCE FROM PROPOSED\*

LOCATION TO NEAREST  
PROPERTY OR LEASE LINE, FT.  
(Also to nearest drlg. unit line, if Any)

16. NO OF ACRES IN LEASE

8. DISTANCE FROM PROPOSED LOCATION\*

TO NEAREST WELL, DRILLING, COMPLETED,  
OR APPLIED FOR, ON THIS LEASE, FT.

19. PROPOSED DEPTH

7453'

20. ROTARY OR CABLE TOOLS

Rotary

21. ELEVATIONS (Show whether DF, RT, GR, etc)

6586' GR

22. APPROX. DATE WORK WILL START\*

6/15/98

This action is subject to technical and  
procedural review pursuant to 43 CFR 3165.3  
and appeal pursuant to 43 CFR 3165.4.

PROPOSED CASING AND CEMENTING PROGRAM

SIZE OF HOLE	GRADE, SIZE OF CASING	WEIGHT PER FOOT	SETTING DEPTH	QUANTITY OF CEMENT
12-1/4"	K-55, 9-5/8"	36#	250'	145 sxs, circ.
8-3/4"	K-55, 7"	23#	3182'	390 sxs, circ.
6-1/4"	K-55, 4-1/2"	9.5#	7453'	510 sxs, toc @ 3000'

It is proposed to drill a vertical wellbore to the Blanco Mesaverde and Basin Dakota Pools. An NOS was filed 10/13/97. The well will be drilled and equipped according to the following additional attachments:

1. Well Location & Acreage Dedication Plat (C-102).
2. Proposed Well Plan Outline.
3. Cementing Plan.
4. Blowout Preventer Hookup.
5. Surface Use Plan with Production Facility layout.
6. Pipeline Tie Specifications with plat.

This application includes ROW's for the well pad, cathodic protection and pipeline.

DRILLING OPERATIONS AUTHORIZED ARE  
SUBJECT TO COMPLIANCE WITH ATTACHED  
"GENERAL REQUIREMENTS"

RECEIVED  
BLM  
OCT 28 PM 12:48  
BUREAU OF LAND MANAGEMENT, NM

IN ABOVE SPACE DESCRIBE PROPOSED PROGRAM: If proposal is to deepen give data on present productive zone and proposed new productive zone. If proposal is to drill or deepen directionally, give pertinent data on subsurface locations and measured and true vertical depths. Give blowout preventer program, if any.

24.

SIGNED

*Jo Ann Johnson*

TITLE

Jo Ann Johnson

Sr. Property Analyst

DATE

5-21-98

(This space for Federal or State office use)

PERMIT NO

APPROVAL DATE

OCT 06 1998

Application approval does not warrant or certify that the applicant holds legal or equitable title to those rights in the subject lease which would entitle the applicant to conduct operations thereon.

CONDITIONS OF APPROVAL, IF ANY:

/S/ Duane W. Spencer

OCT - 6 1998

APPROVED BY

TITLE

DATE

\*See Instructions On Reverse Side

Title 18 U.S.C. Section 1001, makes it a crime for any person knowingly and willfully to make to any department or agency of the United States any false, fictitious or fraudulent statements or representations as to any matter within its jurisdiction.

NGL-4061 @

NMOCD

District I  
PO Box 1980, Hobbs, NM 88241-1980

District II  
PO Drawer 00, Artesia, NM 88211-0719

District III  
1000 Rio Brazos Rd., Aztec, NM 87410

District IV  
PO Box 2088, Santa Fe, NM 87504-2088

State of New Mexico  
Energy, Minerals & Natural Resources Department

OIL CONSERVATION DIVISION  
PO Box 2088  
Santa Fe, NM 87504-2088

Form C-102  
Revised February 21, 1994

Submit to Appropriate District Office  
Instructions on back  
State Lease - 4 Copies  
Fee Lease - 3 Copies

93 JUL 22 AM 10:29 ☐ AMENDED REPORT

WELL LOCATION AND ACREAGE DEDICATION PLAT

*API Number 30-039-25980		*Pool Code 72319/71599	*Pool Name Blanco Mesaverde/Basin Dakota (laydown)
*Property Code 16608	*Property Name SAN JUAN 28-7 UNIT		*Well Number 98M
*OGRID No. 005073	*Operator Name CONOCO INC.		*Elevation 6596'

<sup>10</sup> Surface Location

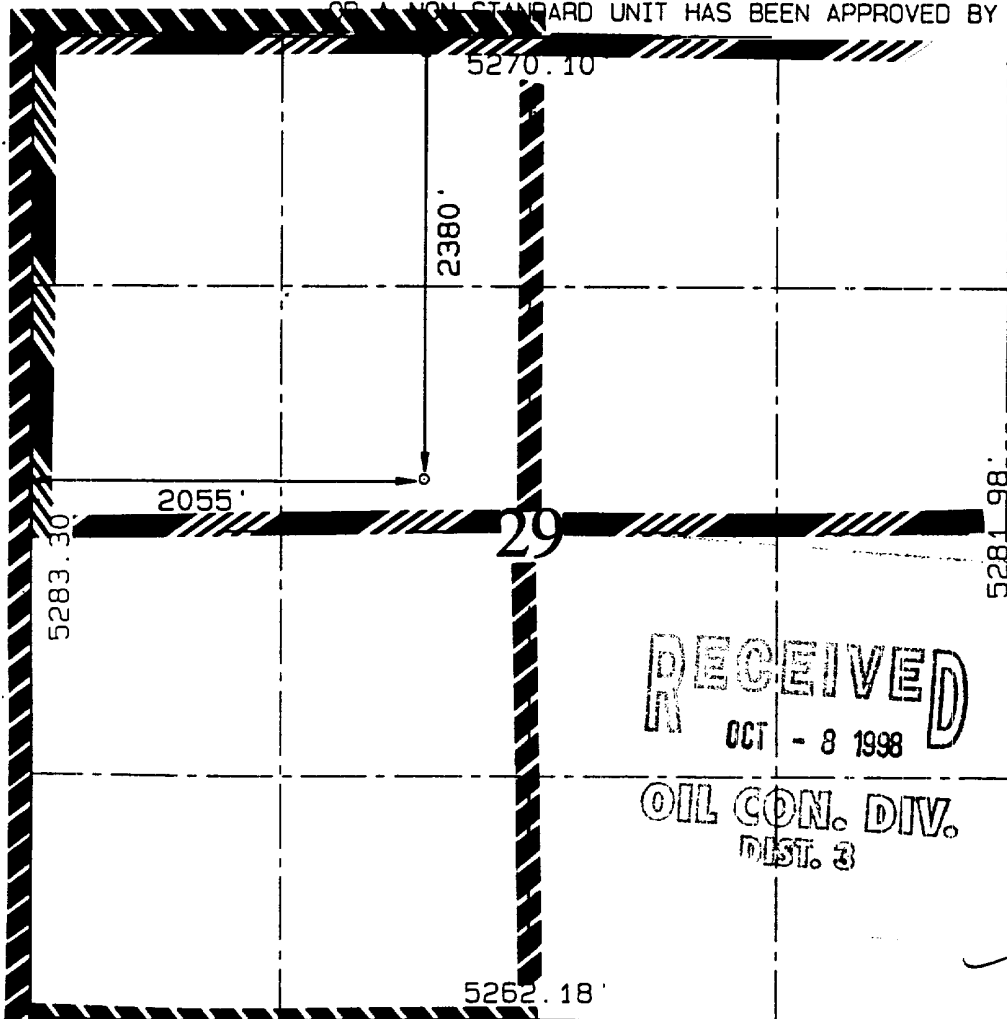
UL or lot no. F	Section 29	Township 27N	Range 7W	Lot Idn	Feet from the 2380	North/South line NORTH	Feet from the 2055	East/West line WEST	County RIO ARriba
--------------------	---------------	-----------------	-------------	---------	-----------------------	---------------------------	-----------------------	------------------------	----------------------

<sup>11</sup> Bottom Hole Location If Different From Surface

UL or lot no.	Section	Township	Range	Lot Idn	Feet from the	North/South line	Feet from the	East/West line	County
---------------	---------	----------	-------	---------	---------------	------------------	---------------	----------------	--------

<sup>12</sup> Dedicated Acres 320	<sup>13</sup> Joint or Infill	<sup>14</sup> Consolidation Code	<sup>15</sup> Order No. Non standard location has been applied for
--------------------------------------	-------------------------------	----------------------------------	---

NO ALLOWABLE WILL BE ASSIGNED TO THIS COMPLETION UNTIL ALL INTERESTS HAVE BEEN CONSOLIDATED  
OR A NON-STANDARD UNIT HAS BEEN APPROVED BY THE DIVISION



<sup>17</sup> OPERATOR CERTIFICATION  
I hereby certify that the information contained herein is true and complete to the best of my knowledge and belief.

*Jo Ann Johnson*  
Signature  
Jo Ann Johnson  
Printed Name  
Sr. Property Analyst  
Title  
7/16/98  
Date

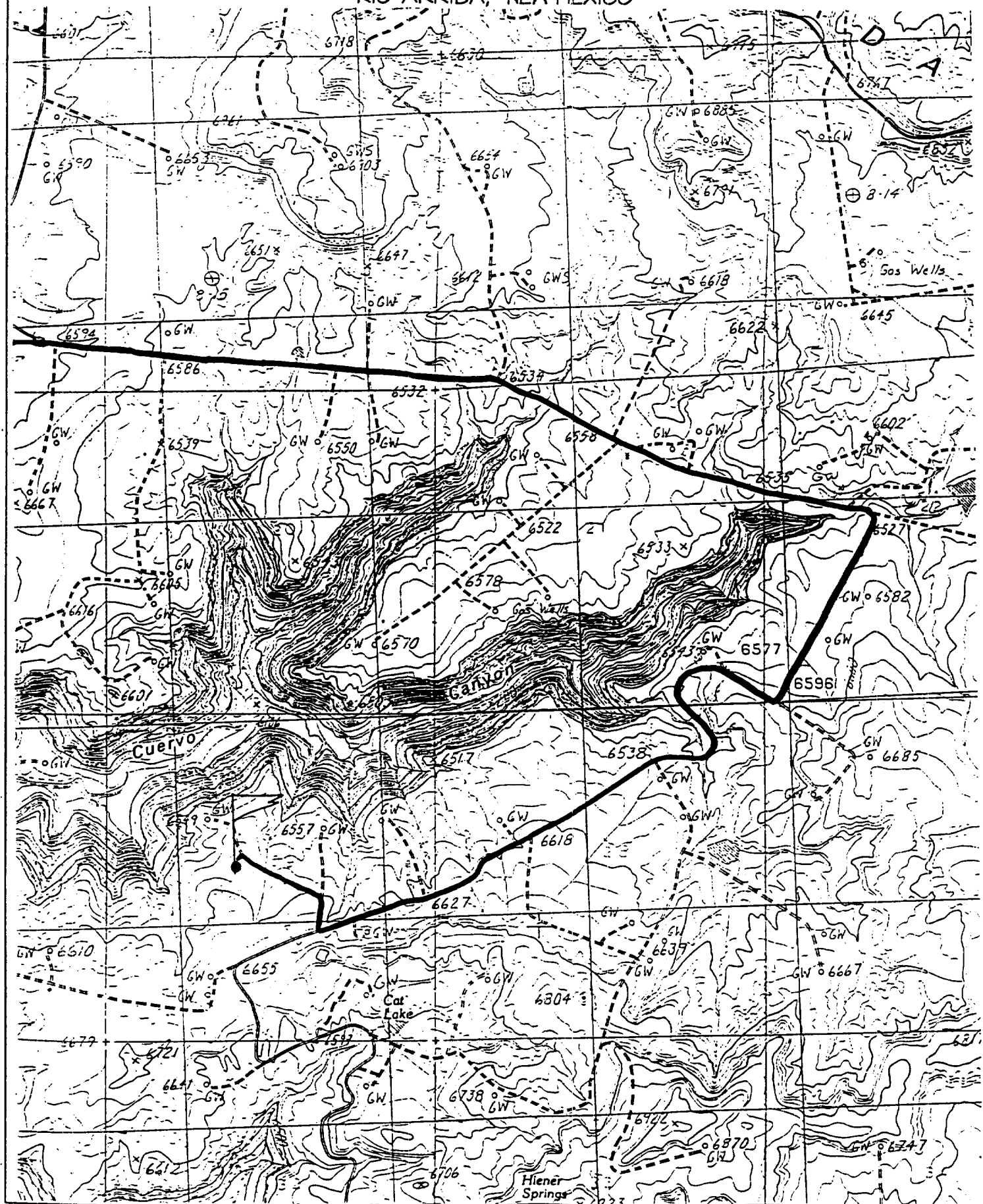
<sup>18</sup> SURVEYOR CERTIFICATION  
I hereby certify that the well location shown on this plat was plotted from field notes of actual surveys made by me or under my supervision, and that the same is true and correct to the best of my belief.

JUNE 3, 1998  
Date of Survey

Signature and Seal of Professional Surveyor

NEALE C. EDWARDS  
NEW MEXICO  
68572  
Certificate Number

2380' FNL & 2055' FWL, SECTION 29, T27N, R7W, N.M.P.M.  
RIO ARRIBA, NEW MEXICO



## PROPOSED WELL PLAN OUTLINE

WELL NAME **SJ 28-7 UNIT No. 18M**

EST. GL = 6586

EST. KB = 6599

LOCATION: **SEC 29, T-27N, R-7W, RIO ARRIBA CO., NM**

TVD IN 1000	MD	FORMATION TOPS & TYPE	DRILLING PROBLEMS	TYPE OF FORMATION EVALUATION	HOLE SIZE	CASING SIZE DEPTH	FRAC GRAD. psi/ft	FORMATION PRESSURE PSI	MUD WT TYPE	DAYS
0					12-1/4"	9-5/8" 36# K-55 ST&C @ 250' CIRC CMT		NORMAL	8.4 - 8.8# SPUD MUD	1
1					8-3/4"				8.4 - 9.0# GEL/WATER MAINTAIN MW AS LOW AS POSSIBLE	
2		OJAM @ 2031' KRLD @ 2281'	POSSIBLE WATERFLOW						CONTROL FLUID LOSS PRIOR TO OJAM	
3		FRLD @ 2489'	POSSIBLE GAS FLOW					432 PSI		
		PCCF @ 2882'	POSSIBLE LOST RETURNS POSSIBLE DIFFERENTIAL STICKING					360 PSI		
4		LEWS @ 3016'			8-3/4"	7" 23# K-55 LTC at 3182' (special drift) CIRC CMT				5
5		CHRA @ 3772'			6-1/4"			400 PSI	AIR/AIR MIST/GAS	
6		CLFH/MV @ 4547' MENF @ 4584'	PROBABLE LOST RETURNS IF FLUID IN HOLE				0.5	457 PSI		
7		PTLK @ 5139'								
		MNCS @ 5487'								
8		GLLP @ 6313'								
9		GRHN @ 7110' GRRS DKOT @ 7171' PAGU @ 7328'	POSSIBLE WATERFLOW POSSIBLE OVERPRESSURE IN DEEP DAKOTA	CASED HOLE LOGS	6-1/4"	4-1/2" 9.5# K-55 LTC @ 7453'	0.5	713 PSI BHT = 175 deg F	AIR/AIR MIST/GAS	10
10		T.D. @ 7453'				TOC @ 3000'				
11		NOTE: PERMIT TO 7753'								

DATE 05/06/98

APPROVALS:

PREPARED:

Ricky Joyce/Ted Kelly  
DRILLING ENGINEER

RES. ENGINEER

PROD. ENGINEER

GEOLOGIST

DRILLING MGR.

11:03 AM