

UNITED STATES
DEPARTMENT OF THE INTERIOR
BUREAU OF LAND MANAGEMENT

APPLICATION FOR PERMIT TO DRILL, DEEPEN, OR PLUG BACK

11

1a. Type of Work
DRILL

1b. Type of Well
GAS

2. Operator
BURLINGTON RESOURCES Oil & Gas Company
14538

3. Address & Phone No. of Operator
PO Box 4289, Farmington, NM 87499
(505) 326-9700

4. Location of Well
1240' FNL, 1160' FNL
Latitude 36° 35' 29", Longitude 107° 14' 37"

5. Lease Number
SF-080668

6. If Indian, All. or Tribe

7. Unit Agreement Name
San Juan 27-4 Unit

8. Farm or Lease Name
San Juan 27-4 Unit

9. Well Number
98A

10. Field, Pool, Wildcat
Blanco MV 72319

11. Sec., Twn, Rge, Mer. (NMPM)
Sec 10, T-27-N, R-4-W
API # 30-039-26008

12. County
RA

13. State
NM

14. Distance in Miles from Nearest Town
60 miles to Bloomfield

15. Distance from Proposed Location to Nearest Property or Lease Line
1160'

16. Acres in Lease

17. Acres Assigned to Well
320

18. Distance from Proposed Location to Nearest Well, Drig, Compl, or Applied for on this Lease
2000'

19. Proposed Depth
6212
This action is subject to technical and procedural review pursuant to 43 CFR 3165.3 and appeal pursuant to 43 CFR 3165.4.

20. Rotary or Cable Tools
Rotary

21. Elevations (DF, FT, GR, Etc.)
6783'

22. Approx. Date Work will Start
DRILLING OPERATIONS AUTHORIZED ARE SUBJECT TO COMPLIANCE WITH ATTACHED "GENERAL REQUIREMENTS"

23. Proposed Casing and Cementing Program
See Operations Plan attached

24. Authorized by: [Signature] Regulatory/Compliance Administrator
Date 6-4-98

PERMIT NO. _____ APPROVAL DATE OCT 23 1998

APPROVED BY /s/ Duane W. Spencer TITLE _____ DATE OCT 23 1998

Archaeological Report to be submitted

Threatened and Endangered Species Report to be submitted

NOTE: This format is issued in lieu of U.S. BLM Form 3160-3

Title 18 U.S.C. Section 1001, makes it a crime for any person knowingly and willfully to make to any department or agency of the United States any false, fictitious or fraudulent statements or presentations as to any matter within its jurisdiction.

NSL-4101 @

NMOCD

District I
PO Box 1988, Hobbs, NM 88241-1988
District II
PO Drawer DD, Artesia, NM 88211-0719
District III
1000 Rio Hrazon Rd., Aztec, NM 87410
District IV
PO Box 2088, Santa Fe, NM 87504-2088

State of New Mexico
Energy, Minerals & Natural Resources Department

OIL CONSERVATION DIVISION
PO Box 2088
Santa Fe, NM 87504-2088

Form
Revised February 21
Instructions c
Submit to Appropriate District
State Lease - 4
Fee Lease - 3

98 JUN 18 PM 1:16

☐ AMENDED RE

WELL LOCATION AND ACREAGE DEDICATION PLAT

API Number 30-039- 26008	Pool Code 72319/71599	Pool Name Blanco Mesaverde,
Property Code 7452	Property Name SAN JUAN 27-4 UNIT	Well Number # 98A
OGRID No. 14538	Operator Name BURLINGTON RESOURCES OIL & GAS COMPANY	Elevation 6783

10 Surface Location

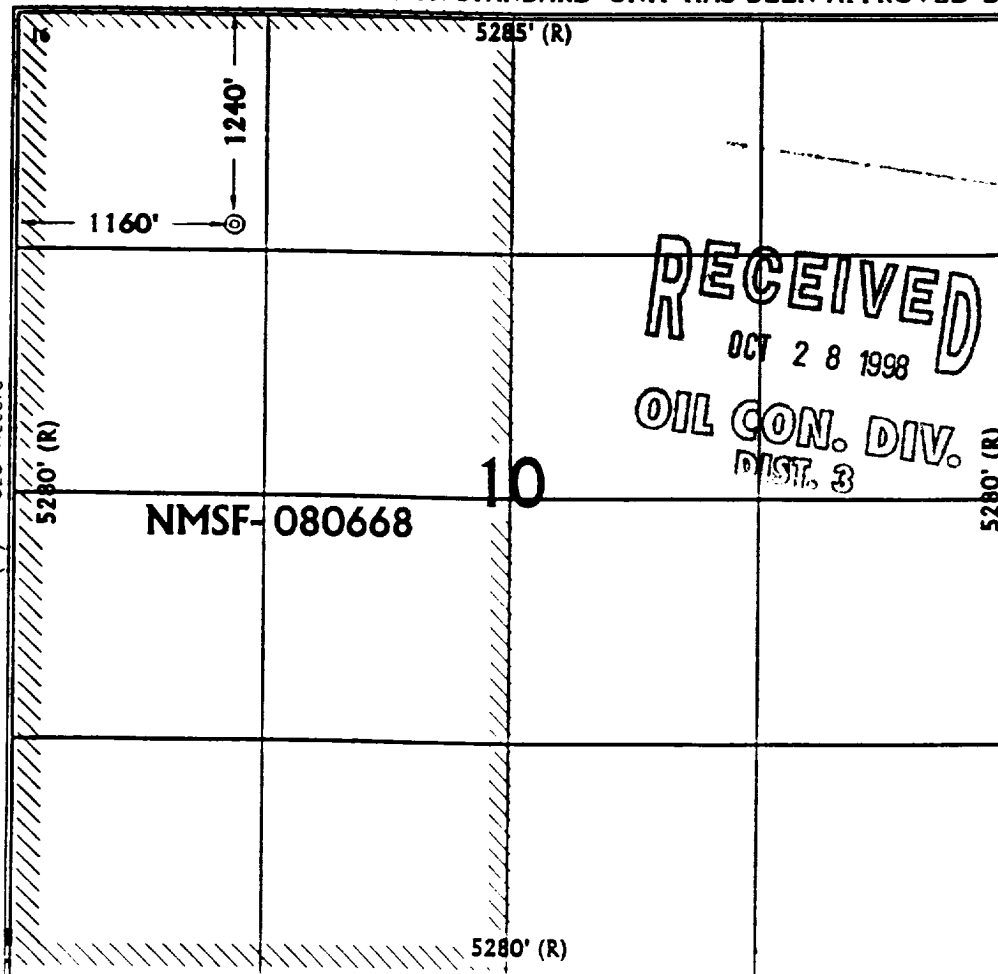
UL or lot no.	Section	Township	Range	Lot Ida	Feet from the	North/South line	Feet from the	East/West line	County
D	10	27 N	4 W		1240	NORTH	1160	WEST	RIO AL

11 Bottom Hole Location If Different From Surface

UL or lot no.	Section	Township	Range	Lot Ida	Feet from the	North/South line	Feet from the	East/West line	County

Dedicated Acre MV-W7320	Joint or Infill	Consolidation Code	Order No.
----------------------------	-----------------	--------------------	-----------

NO ALLOWABLE WILL BE ASSIGNED TO THIS COMPLETION UNTIL ALL INTERESTS HAVE BEEN CONSOLIDATED
OR A NON-STANDARD UNIT HAS BEEN APPROVED BY THE DIVISION



17 OPERATOR CERTIFICATE

I hereby certify that the information contained here is true and complete to the best of my knowledge and belief.

Peggy Bradfield
Signature

Peggy Bradfield
Printed Name

Regulatory Administrator
Title

5-30-98
Date

18 SURVEYOR CERTIFICATE

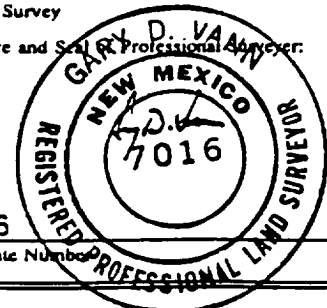
I hereby certify that the well location shown on this plat was plotted from field notes of actual surveys made or under my supervision, and that the same is true correct to the best of my belief.

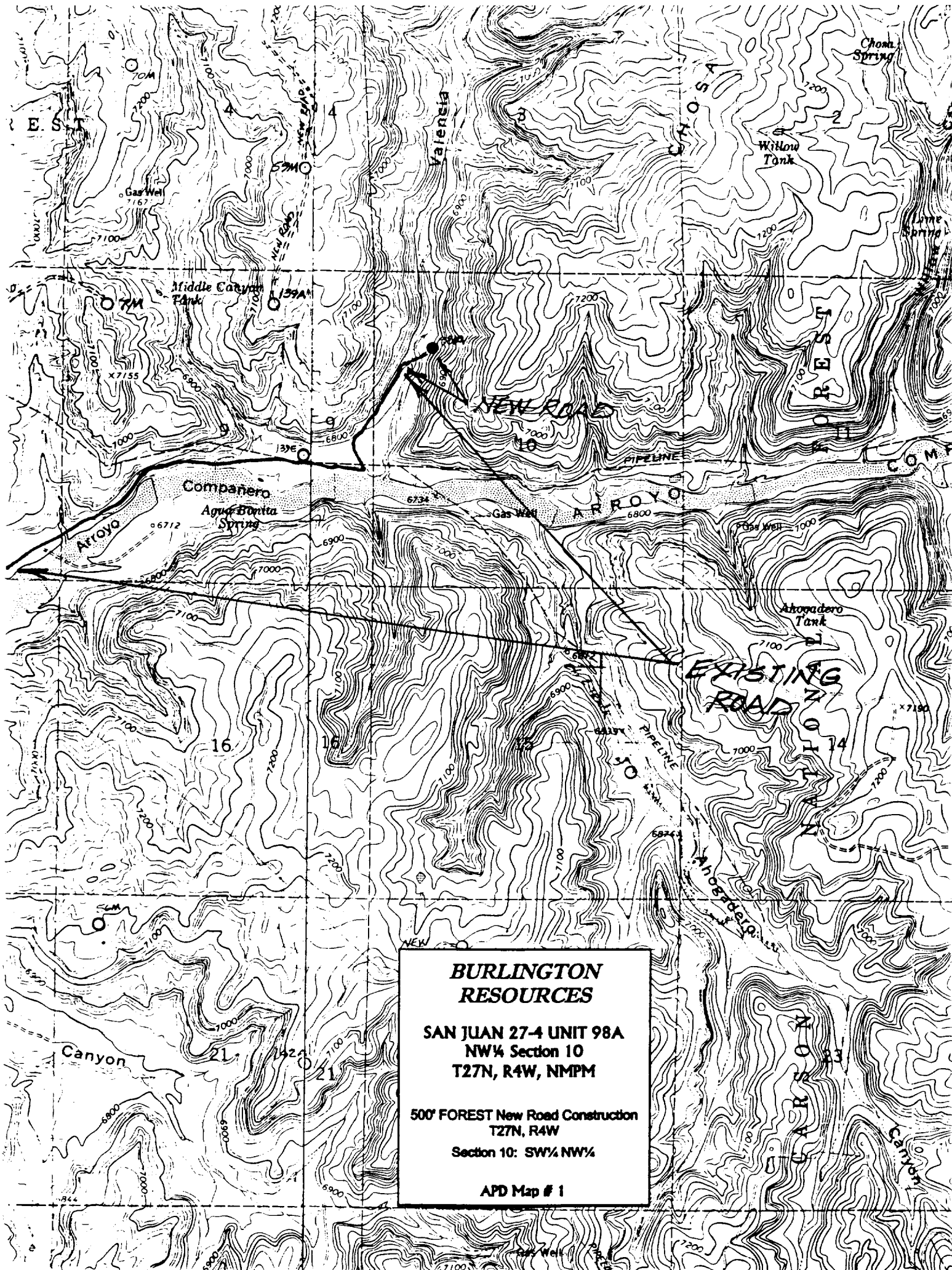
February 13, 1998

Date of Survey

Signature and Seal of Registered Professional Land Surveyor

7016
Certificate Number





**BURLINGTON
RESOURCES**

**SAN JUAN 27-4 UNIT 98A
NW¼ Section 10
T27N, R4W, NMPM**

**500' FOREST New Road Construction
T27N, R4W**

Section 10: SW¼ NW¼

APD Map # 1



NEW MEXICO ENERGY, MINERALS
& NATURAL RESOURCES DEPARTMENT

OIL CONSERVATION DIVISION
2040 South Pacheco Street
Santa Fe, New Mexico 87505
(505) 827-7131

July 23, 1998

Burlington Resources Oil & Gas Company
P. O. Box 4289
Farmington, New Mexico 87499-4289
Attention: Peggy Bradfield

RECEIVED
JUL 29 1998
OIL CON. DIV.
DIST. 3

98A
10-27-4

Administrative Order NSL-4101

Dear Ms. Bradfield:

Reference is made to your application submitted to the New Mexico Oil Conservation Division ("Division") on July 14, 1998 for an exception to the well location requirements provided within the "Special Rules and Regulations for the Blanco-Mesaverde Pool/Special Rules and Regulations for the Basin-Dakota Pool," as promulgated by Division Order No. R-10987, for Burlington Resources Oil & Gas Company's ("Burlington") proposed San Juan "27-4" Unit Well No. 98-A to be drilled at an unorthodox gas well location in both the Blanco-Mesaverde and Basin-Dakota Pools 1240 feet from the North line and 1160 feet from the West line (Unit D) of Section 10, Township 27 North, Range 4 West, NMPM, Rio Arriba County, New Mexico.

Gas production from the Blanco-Mesaverde Pool is to be included in an existing standard 320-acre stand-up gas spacing and proration unit comprising the W/2 of Section 10, which is currently dedicated to Burlington's San Juan "27-4" Unit Well No. 98 (API No. 30-039-20834), located at a standard gas well location 1180 feet from the South line and 1840 feet from the West line (Unit N) of Section 10.

The W/2 of Section 10, being a standard 320-acre gas spacing and proration unit for the Basin Dakota Pool, is also to be dedicated to the proposed San Juan "27-4" Unit Well No. 98-A.

The application has been duly filed under the provisions of Division Rules 104.F and 605.B of the Rules and Regulations of the New Mexico Oil Conservation Division ("Division").

By the authority granted me under the provisions of Division Rule 104.F(2), the above-described unorthodox Blanco-Mesaverde "infill" gas well location and Basin-Dakota gas well location for the San Juan "27-4" Unit Well No. 98-A is hereby approved. Both of the aforementioned San Juan "27-4" Unit Well Nos. 98 and 98-A and both spacing units will be subject to all existing rules, regulations, policies, and procedures applicable to prorated gas pools in Northwest, New Mexico.

Sincerely,

Lori Wrotenberg
Director

LW/MES/kv

cc: New Mexico Oil Conservation Division - Aztec /
U. S. Bureau of Land Management - Farmington

BURLINGTON RESOURCES

SAN JUAN DIVISION

RECEIVED
JUL 14 1989

OIL CON. DIV.
DIST. 3

Sent Federal Express

Ms. Lori Wrotenbery, Director
New Mexico Oil Conservation Division
2040 South Pacheco
Santa Fe, New Mexico 87505

Re: San Juan 27-4 Unit #98A
1160'FNL, 1240'FWL, Section 10, T-27-N, R-4-W, Rio Arriba County, NM
30-039-not assigned

Dear Ms. Wrotenbery:

Burlington Resources is applying for administrative approval of an unorthodox gas well location for the Mesa Verde pool. This application for the referenced location is for topographic reasons, archaeology, and at the request of the Carson National Forest Service.

Production from the Blanco Mesa Verde pool is to be included in a standard 320 acre gas spacing and proration unit comprising of the west half (W/2) of Section 10 which is currently dedicated to Burlington's San Juan 27-4 Unit #98 (API 30-039-20834), located at 1180'FSL, 1840'FWL of Section 10. The Dakota formation in the San Juan 27-4 Unit #98 was plugged and abandoned in November 1980.

The following attachments are for your review:

1. Application for Permit to Drill.
2. Completed C-102 at referenced location.
3. Offset operators/owners plat – Burlington is the operator of the unit.
4. 7.5 minute topographic map, and enlargement of the map to define topographic features.

We appreciate your earliest consideration of this application.

Sincerely,




Peggy Bradfield
Regulatory/Compliance Administrator

xc: NMOCD - Aztec District Office
Bureau of Land Management – Farmington District Office

UNITED STATES
DEPARTMENT OF THE INTERIOR
BUREAU OF LAND MANAGEMENT

APPLICATION FOR PERMIT TO DRILL, DEEPEN, OR PLUG BACK

1a. Type of Work DRILL	5. Lease Number SF-080668
1b. Type of Well GAS	Unit Reporting Number 891001054A
	6. If Indian, All. or Tribe
2. Operator BURLINGTON RESOURCES Oil & Gas Company	7. Unit Agreement Name San Juan 27-4 Unit
3. Address & Phone No. of Operator PO Box 4289, Farmington, NM 87499 (505) 326-9700	8. Farm or Lease Name San Juan 27-4 Unit
	9. Well Number 98A
4. Location of Well 1240' FNL, 1160' FWL Latitude 36° 35' 29", Longitude 107° 14' 37"	10. Field, Pool, Wildcat Blanco MV
	11. Sec., Twn, Rge, Mer. (NMPM) Sec 10, T-27-N, R-4-W
	API # 30-039-
14. Distance in Miles from Nearest Town 60 miles to Bloomfield	12. County RA
	13. State NM
15. Distance from Proposed Location to Nearest Property or Lease Line 1160'	
16. Acres in Lease	17. Acres Assigned to Well 320
18. Distance from Proposed Location to Nearest Well, Drig, Compl, or Applied for on this Lease 2000'	
19. Proposed Depth 6212	20. Rotary or Cable Tools Rotary
21. Elevations (DF, FT, GR, Etc.) 6783'	22. Approx. Date Work will Start
23. Proposed Casing and Cementing Program See Operations Plan attached	
24. Authorized by: <u></u> Regulatory/Compliance Administrator	<u>6-4-98</u> Date

PERMIT NO. _____ APPROVAL DATE _____

APPROVED BY _____ TITLE _____ DATE _____

Archaeological Report to be submitted

Threatened and Endangered Species Report to be submitted

NOTE: This format is issued in lieu of U.S. BLM Form 3160-3

Title 18 U.S.C. Section 1001, makes it a crime for any person knowingly and willfully to make to any department or agency of the United States any false, fictitious or fraudulent statements or presentations as to any matter within its jurisdiction.

District I
PO Box 1908, Hobbs, NM 88241-1908
District II
PO Drawer DD, Artesia, NM 88211-0719
District III
1000 N. H. H. Rd., Aztec, NM 87410
District IV
PO Box 2088, Santa Fe, NM 87504-2088

State of New Mexico
Energy, Minerals & Natural Resources Department

OIL CONSERVATION DIVISION
PO Box 2088
Santa Fe, NM 87504-2088

Form
Revised February 2
Instructions c
Submit to Appropriate District
State Lease - 4
Fee Lease - 3

☐ AMENDED R

WELL LOCATION AND ACREAGE DEDICATION PLAT

API Number 30-039-	Pool Code 72319/71599	Pool Name Blanco Mesaverde
Property Code 7452	Property Name SAN JUAN 27-4 UNIT	Well Number # 98A
OGRID No. 14538	Operator Name BURLINGTON RESOURCES OIL & GAS COMPANY	Elevation 6783

10 Surface Location

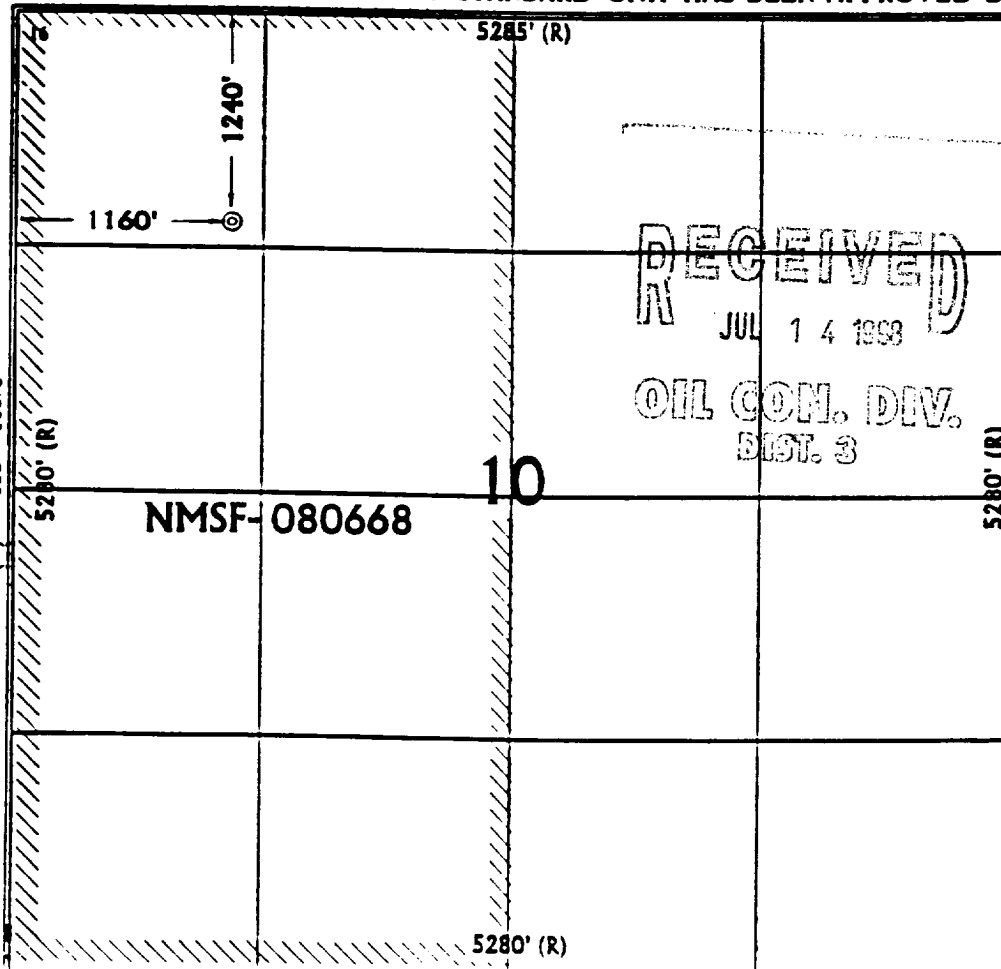
UL or lot no. D	Section 10	Township 27 N	Range 4 W	Lot Ida	Feet from the 1240	North/South line NORTH	Feet from the 1160	East/West line WEST	County RIO A.
--------------------	---------------	------------------	--------------	---------	-----------------------	---------------------------	-----------------------	------------------------	------------------

11 Bottom Hole Location If Different From Surface

UL or lot no.	Section	Township	Range	Lot Ida	Feet from the	North/South line	Feet from the	East/West line	County
---------------	---------	----------	-------	---------	---------------	------------------	---------------	----------------	--------

Dedication Area MV-W/320	Joins or Infill	Consolidation Code	Order No.
-----------------------------	-----------------	--------------------	-----------

NO ALLOWABLE WILL BE ASSIGNED TO THIS COMPLETION UNTIL ALL INTERESTS HAVE BEEN CONSOLIDA
OR A NON-STANDARD UNIT HAS BEEN APPROVED BY THE DIVISION



17 OPERATOR CERTIFICATE

I hereby certify that the information contained her
true and complete to the best of my knowledge an

Peggy Bradfield
Signature

Peggy Bradfield
Printed Name

Regulatory Administra
Title

5-30-98
Date

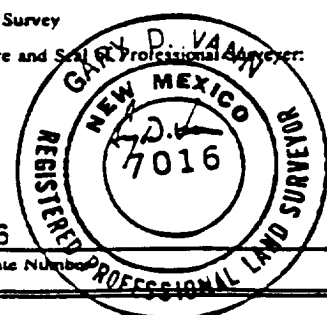
18 SURVEYOR CERTIFICATE

I hereby certify that the well location shown on th
was plotted from field notes of actual surveys mea
or under my supervision, and that the same is tru
correct to the best of my belief.

February 13, 1998

Date of Survey

Signature and Seal of Professional Surveyor



7016

Certificate Number

OPERATIONS PLAN

Well Name: San Juan 27-4 Unit #98A
Location: 1240' FNL, 1160' FWL Section 10, T-27-N, R-4-W
Rio Arriba County, New Mexico
Latitude 36° 35' 29", Longitude 107° 14' 37"
Formation: Blanco Mesa Verde
Elevation: 6783' GL

<u>Formation Tops:</u>	<u>Top</u>	<u>Bottom</u>	<u>Contents</u>
Surface	San Jose	3077'	aquifer
Ojo Alamo	3077'	3250'	aquifer
Kirtland	3250'	3276'	
Fruitland	3276'	3624'	
Pictured Cliffs	3624'	3763'	gas
Lewis	3763'	4195'	gas
Intermediate TD	3863'		
Huerfanito Bentonite	4195'	4635'	
Chacra	4635'	5428'	
Massive Cliff House	5428'	5507'	gas
Menefee	5507'	5812'	gas
Massive Point Lookout	5812'		gas
Total Depth	6212'		

Logging Program:

Cased hole logging - Gamma Ray Neutron
Coring/DST - none

Mud Program:

<u>Interval</u>	<u>Type</u>	<u>Weight</u>	<u>Vis.</u>	<u>Fluid Loss</u>
0- 200'	Spud	8.4-9.0	40-50	no control
200-3863'	LSND	8.4-9.0	30-60	no control
3863-6212'	Gas/Mist	n/a	n/a	n/a

Pit levels will be visually monitored to detect gain or loss of fluid control.

Casing Program (as listed, the equivalent, or better):

<u>Hole Size</u>	<u>Depth Interval</u>	<u>Csg. Size</u>	<u>Wt.</u>	<u>Grade</u>
12 1/4"	0' - 200'	9 5/8"	32.3=	H-40
8 3/4"	0' - 3863'	7"	20.0=	J-55
6 1/4"	3763' - 6212'	4 1/2"	10.5=	J-55

Tubing Program:

0' - 6212' 2 3/8" 4.7= J-55

BOP Specifications, Wellhead and Tests:

Surface to Intermediate TD -

11" 2000 psi minimum double gate BOP stack (Reference Figure #1).
After nipple-up prior to drilling out surface casing, rams and casing will be tested to 600 psi for 30 minutes.

BOP Specifications, Wellhead and Tests (cont'd):

Intermediate TD to Total Depth -

11" 2000 psi minimum double gate BOP stack (Reference Figure #1). After nipple-up prior to drilling out intermediate casing, rams and casing will be tested to 1500 psi for 30 minutes.

Surface to Total Depth -

2" nominal, 2000 psi minimum choke manifold (Reference Figure #3).

Completion Operations -

7 1/16" 2000 psi double gate BOP stack (Reference Figure #2). After nipple-up prior to completion, pipe rams, casing and liner top will be tested to 2000 psi for 15 minutes.

Wellhead -

9 5/8" x 7" x 2 3/8" x 2000 psi tree assembly.

General -

- Pipe rams will be actuated once each day and blind rams will be actuated once each trip to test proper functioning.
- An upper kelly cock valve with handle available and drill string valves to fit each drill string will be available on the rig floors at all times.
- BOP pit level drill will be conducted weekly for each drill crew.
- All BOP tests & drills will be recorded in daily drilling reports.
- Blind and pipe rams will be equipped with extension hand wheels.

Cementing:

9 5/8" surface casing - cement with 163 sx Class "B" cement with 1/4# flocele/sx and 3% calcium chloride (188 cu.ft. of slurry, 200% excess to circulate to surface). WOC 8 hrs. Test casing to 600 psi for 30 minutes.

Saw tooth guide shoe on bottom. Bowspring centralizers will be run in accordance with Onshore Order #2.

7" intermediate casing -

Lead w/315 sx Class "B" w/3% econolite, 10# gilsonite/sx and 1/2# flocele/sx. Tail w/90 sx 50/50 Class "B" Poz w/2% gel, 2% calcium chloride, 0.5# flocele/sx, and 10# gilsonite/sx (1016 cu.ft. of slurry, 75% excess to circulate to surface.) WOC minimum of 8 hours before drilling out intermediate casing. If cement does not circulate to surface, a CBL will be run to determine TOC. Test casing to 1500 psi for 30 minutes.

Cement nose guide shoe on bottom with float collar spaced on top of shoe joint. Bowspring centralizers spaced every other joint off bottom, to the base of the Ojo Alamo at 3250'. Two turbolating centralizers at the base of the Ojo Alamo at 3250'. Bowspring centralizers spaced every fourth joint from the base of the Ojo Alamo to the base of the surface casing.

4 1/2" Production Liner -

Cement to circulate liner top. Cement with 264 sx 50/50 Class "B" Poz w/2% gel, 1/4# flocele/sx, 5# gilsonite/sx and 0.3% fluid loss additive (352 cu.ft., 40% excess to circulate liner top). WOC a minimum of 18 hrs prior to completing.

Cement nose guide shoe on bottom with float collar spaced on top of shoe joint. The liner hanger will have a rubber packoff.

- If hole conditions permit, an adequate water spacer will be pumped ahead of each cement job to prevent cement/ mud contamination or cement hydration.
- The pipe will be rotated and/or reciprocated, if hole conditions permit.

Special Drilling Operations (Gas/Mist Drilling):

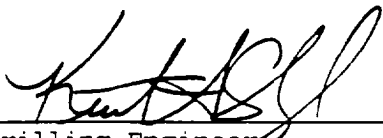
The following equipment will be operational while gas/mist drilling:

- An anchored blooie line will be utilized to discharge all cuttings and circulating medium to the blow pit a minimum of 100' from the wellhead.
- The blooie line will be equipped with an automatic igniter or pilot light.
- Compressors will be located a minimum of 100' from the wellhead in the opposite direction from the blooie line.
- Engines will have spark arresters or water cooled exhaust.
- The rotating head will be properly lubricated and maintained.
- A float valve will be utilized above the bit.
- Mud circulating equipment, water, and mud materials will be sufficient to maintain control of the well.

Additional Information:

- The Mesa Verde formation will be completed.
- No abnormal temperatures or hazards are anticipated.
- Anticipated pore pressures are as follows:

Fruitland Coal	800 psi
Pictured Cliffs	800 psi
Mesa Verde	700 psi
- Sufficient LCM will be added to the mud system to maintain well control, if lost circulation is encountered below the top of the Pictured Cliffs.
- The east half of the section is dedicated to the Mesa Verde.
- This gas is dedicated.



Drilling Engineer

5/8/93

Date

BURLINGTON RESOURCES

San Juan 27-4 Unit #98A
Multi-Point Surface Use Plan

1. Existing Roads - Refer to Map No. 1. Existing roads used to access the proposed location will be properly maintained for the duration of the project. Bureau of Land Management right-of-way has been applied for as shown on Map No. 1.
2. Planned Access Road - Refer to Map No. 1. The required new access road is shown on Map No. 1. The gradient, shoulder, crowning and other design elements will meet or exceed those specified by the responsible government agency. The new access road surface will not exceed twenty feet (20') in width. No additional turnarounds or turnouts will be required. Upon completion of the project, the access road will be adequately drained to control soil erosion. Approximately 800' of access road will be constructed. Pipelines are indicated on Map No. 1A.
3. Location of Existing Wells - Refer to Map No. 1A.
4. Location of Existing and/or Proposed Facilities if Well is Productive -
 - a. On the Well Pad - Refer to Plat No. 1, anticipated production facilities plat.
 - b. Off the Well Pad - Anticipated pipeline facilities as shown on the attached plat from Williams.
5. Location and Type of Water Supply - Water will be hauled by truck for the proposed project and will be obtained from 44 Crossing Water Hole located NE Section 18, T-27-N, R-4-W, New Mexico.
6. Source of Construction Materials - If construction materials are required for the proposed project, such materials will be obtained from a commercial quarry.
7. Methods of Handling Waste Materials - All garbage and trash materials will be removed from the site for proper disposal. A portable toilet will be provided for human waste and serviced in a proper manner. If liquids are left in the reserve pit after completion of the project, the pit will be fenced until the liquids have had adequate time to dry. The location clean-up will not take place until such time as the reserve pit can be properly covered over to prevent run-off from carrying waste materials into the watershed. Reserve pits will be lined as needed with either 12 mil bio-degradable plastic liner or a bentonite liner. All earthen pits will be so constructed as to prevent leakage from occurring; no earthen pit will be located on natural drainage. Generation of hazardous waste is not anticipated. Federal regulations will be adhered to regarding handling and disposal of such waste if so generated.
8. Ancillary Facilities - None anticipated.
9. Wellsite Layout - Refer to the location diagram and to the wellsite cut and fill diagram (Figure No. 4). The blow pit will be constructed with a 2'/160' grade to allow positive drainage to the reserve pit and prevent standing liquids in the blow pit.

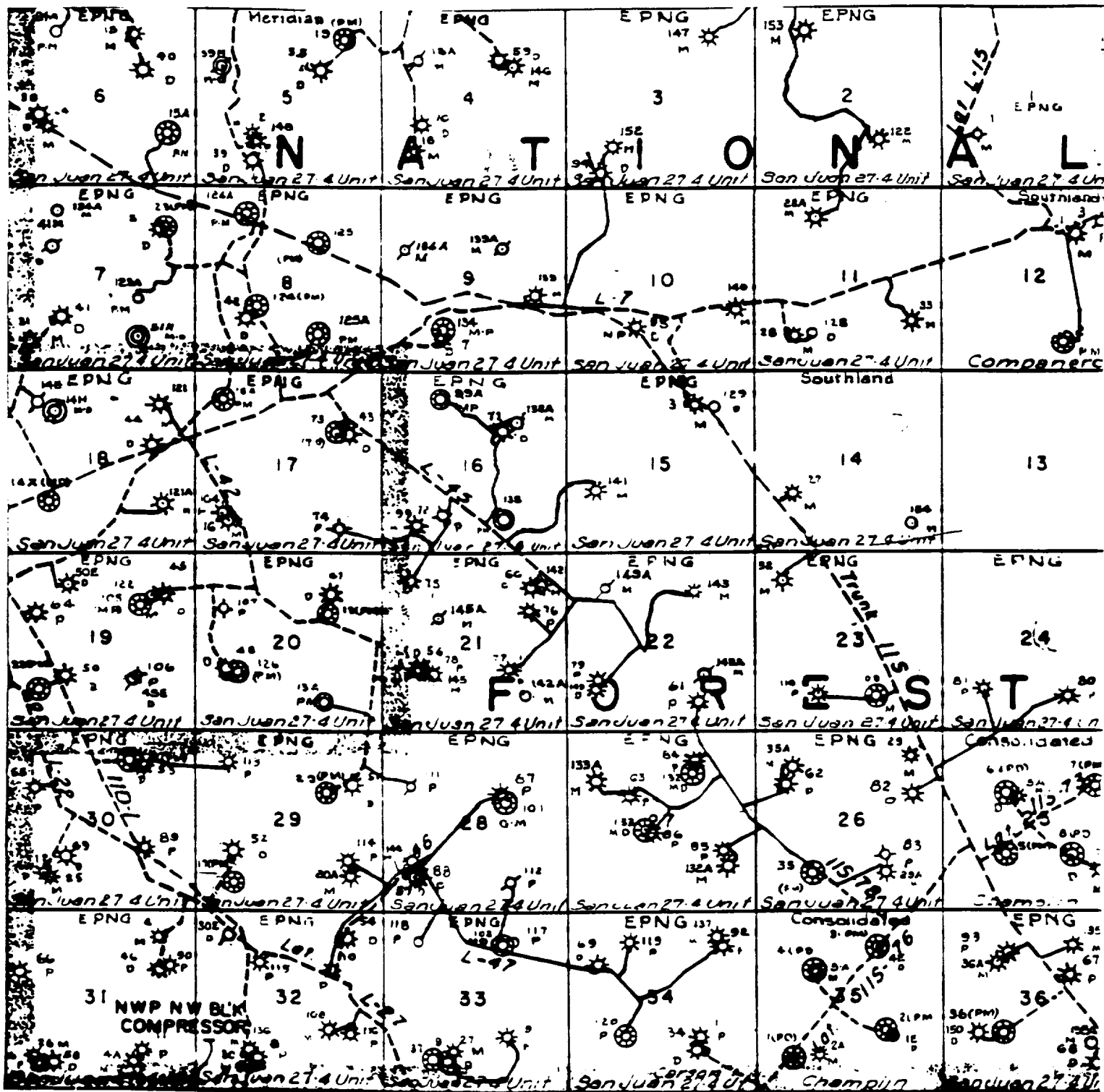
10. Plans for Restoration of the Surface - After completion of the proposed project, the location will be cleaned and leveled. The location will be left in such a condition that will enable reseeding operations to be carried out. Seed mixture as designated by the responsible government agency will be used. The reseeding operations will be performed during the time period set forth by the responsible government agency. The permanent location facilities will be painted as designated by the responsible government agency.
11. Surface Ownership – Carson National Forest
12. Other Information - Environmental stipulations as outlined by the responsible government agency will be adhered to. Refer to the archaeological report for a description of the topography, flora, fauna, soil characteristics, dwellings, historical and cultural sites.
13. Operator's Representative and Certification - Burlington Resources Oil & Gas Company Regional Drilling Manager, Post Office Box 4289, Farmington, NM 87499, telephone (505) 326-9700. I hereby certify that I, or persons under my direct supervision, have inspected the proposed drill site and access route; that I am familiar with the conditions which presently exist; that the statements made in this plan, are to the best of my knowledge, true and correct; and that the work associated with the operations proposed herein will be performed by Burlington Resources Oil and Gas Company and its contractors and subcontractors in conformity with this plan and the terms and conditions under which it is approved.



Regulatory/Compliance Administrator

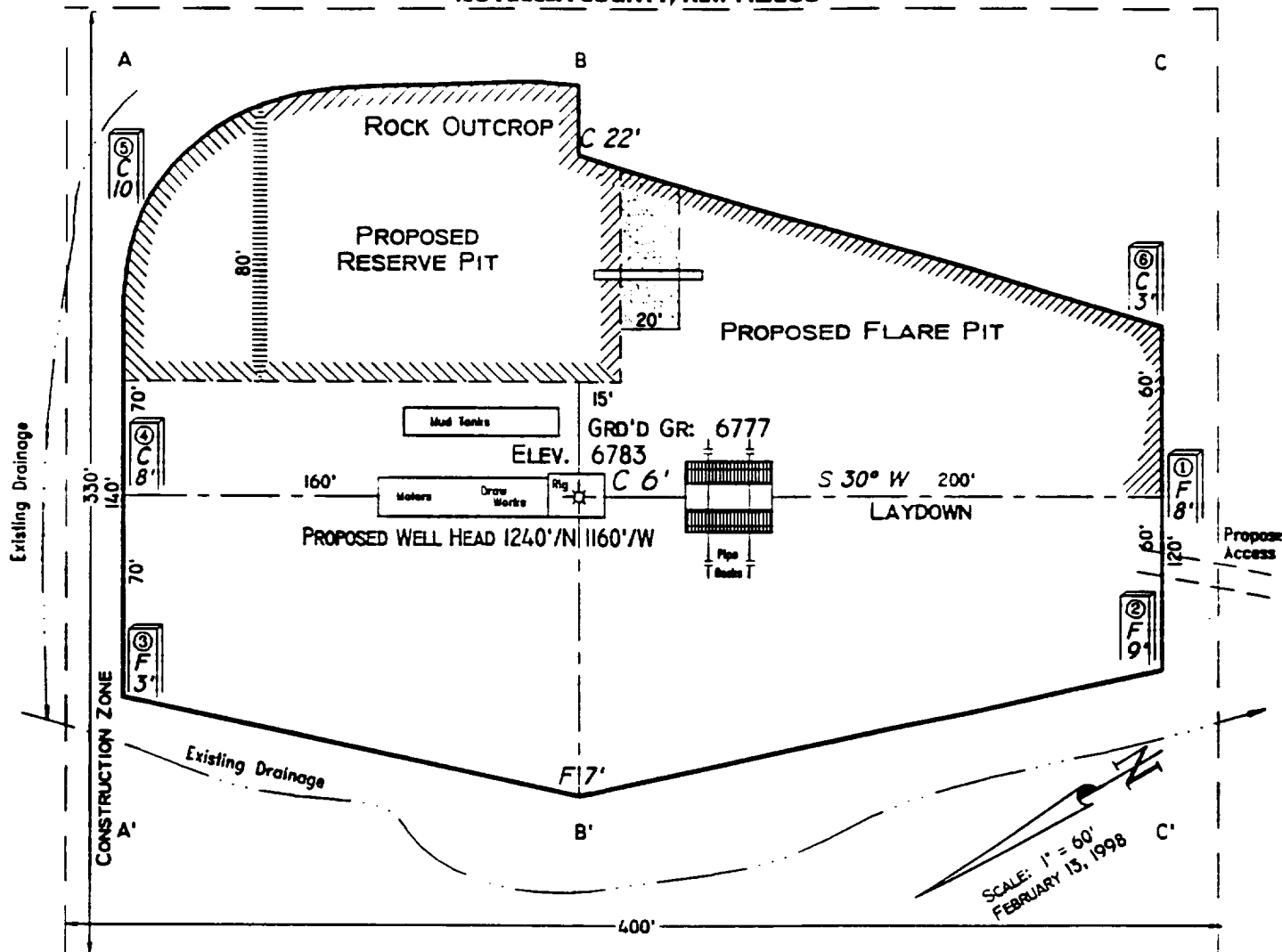
5-30-98

Date

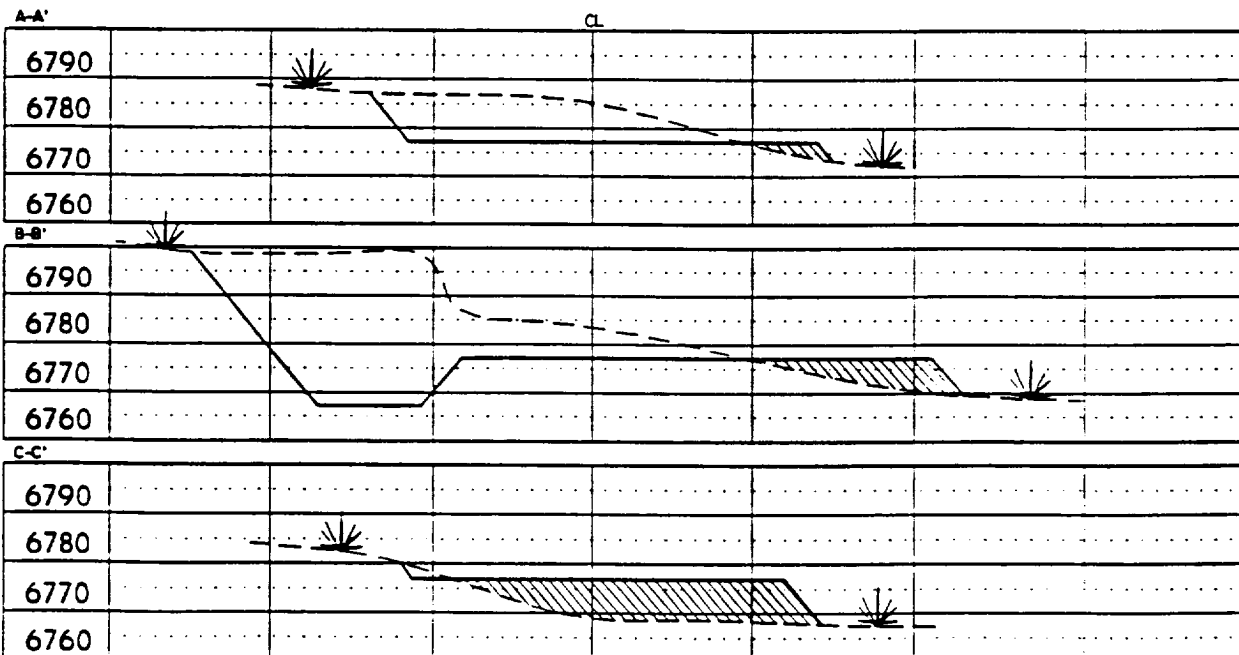


MERIDIAN OIL INC.
 Pipeline Map
 T-27-N, R-04-W
 Rio Arriba County, New Mexico
 San Juan 27-4 Unit =
 Map 1A **48A**

PAD LAYOUT PLAN & PROFILE
BURLINGTON RESOURCES OIL & GAS COMPANY
SAN JUAN 27-4 UNIT 98A
1240' F/NL 1160' F/WL
SEC. 10, T27N, R4W, N.M.P.M.
RIO ARriba COUNTY, NEW MEXICO



NOTES: Reserve Pit Dike - Should be 8" above deep side (overflow - 3" wide & 1" above shallow side)
 Flare Pit - Overflow pipe should be halfway between top and bottom and extend over plastic liner and into flare pit.



SCALE: 1"=60'-HORIZ.
 1"=60'-VERT.

NOTE: Contractor should call One-Call for location of any marked or unmarked buried pipelines or cables, well pad and/or access loc. at least two (2) working days prior to construction.

VANN SURVEY:
 304 N. Locke
 Farmington, N.M.

BURLINGTON RESOURCES OIL AND GAS COMPANY

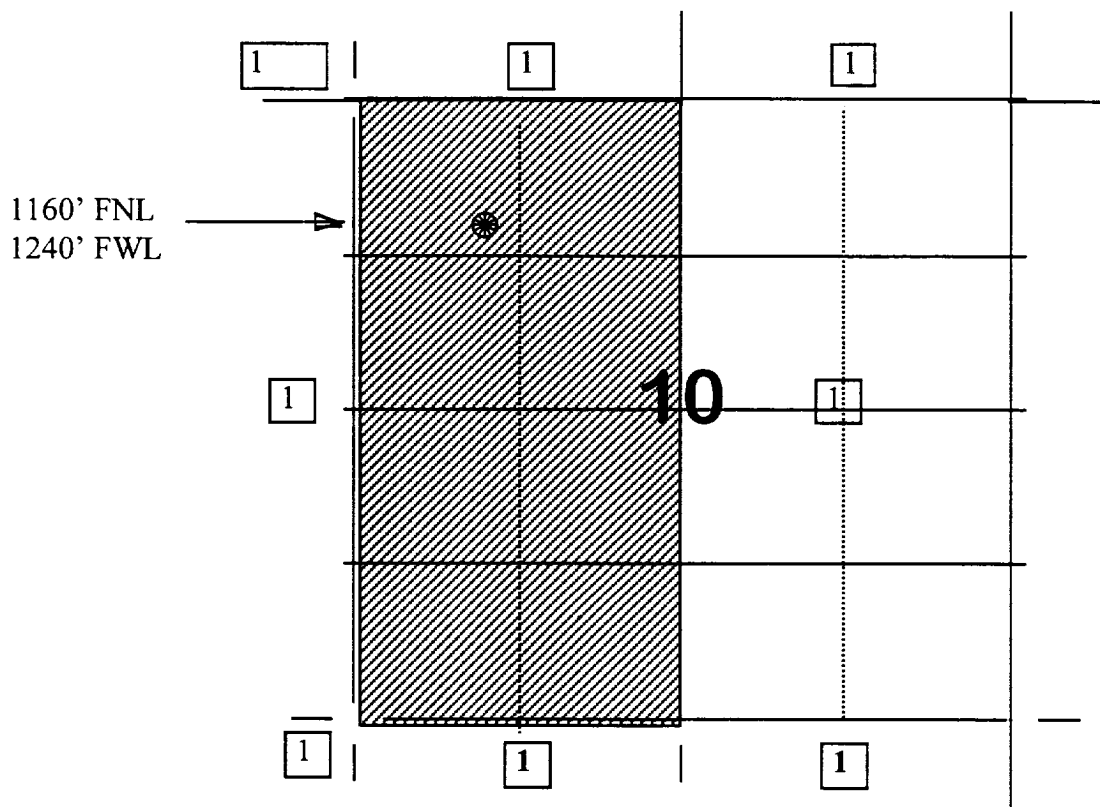
San Juan 27-4 Unit #98A

OFFSET OPERATOR/OWNER PLAT

Mesaverde Formation

Nonstandard Location

Township 27 North, Range 4 West



1) Burlington Resources

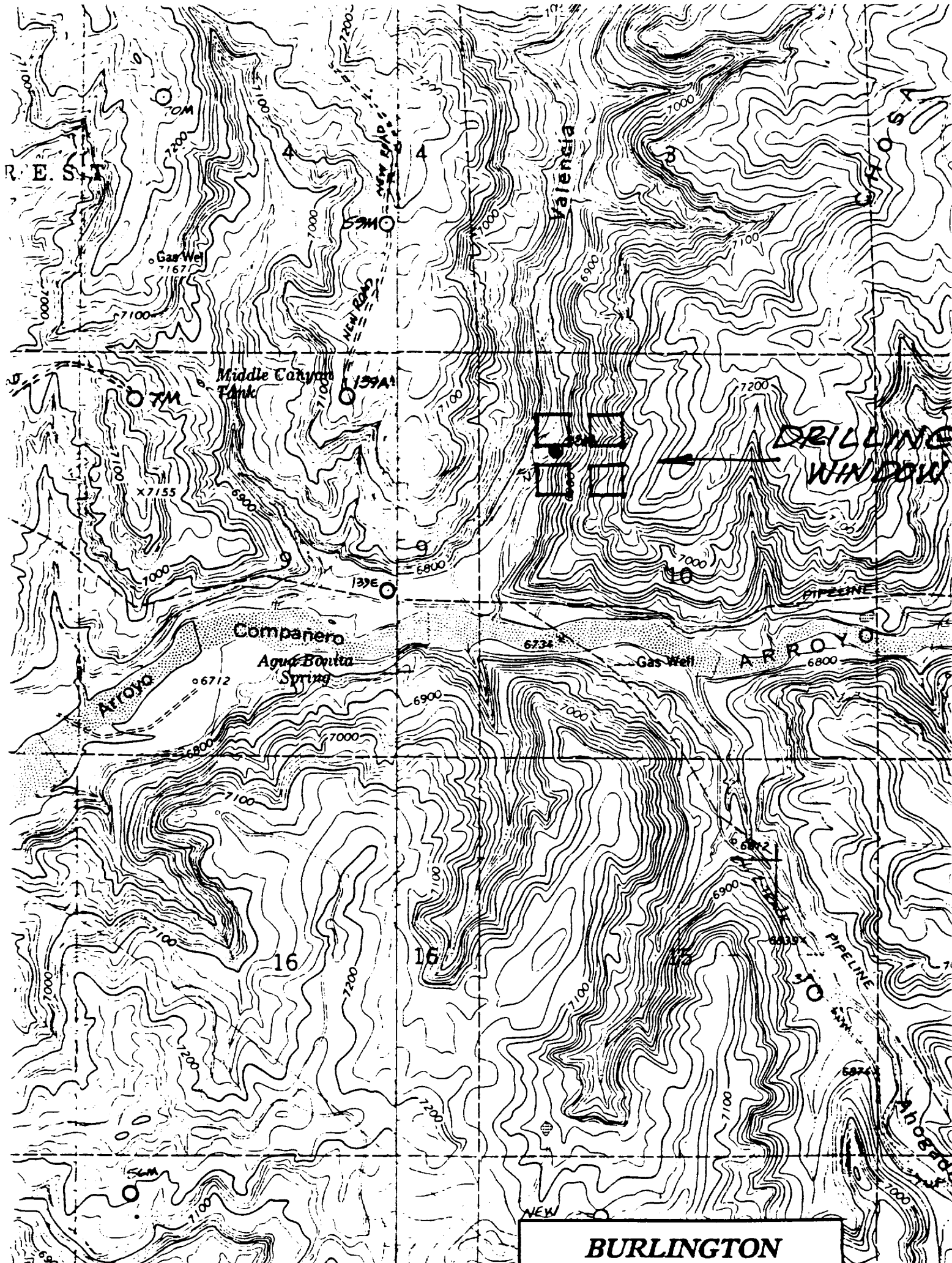
**BURLINGTON
RESOURCES**

**SAN JUAN 27-4 UNIT 98A
NW¼ Section 10
T27N, R4W, NMPM**

**500' FOREST New Road Construction
T27N, R4W**

Section 10: SW¼ NW¼

APD Map # 1



BURLINGTON