

UNITED STATES  
DEPARTMENT OF THE INTERIOR  
BUREAU OF LAND MANAGEMENT

APPLICATION FOR PERMIT TO DRILL, DEEPEN, OR PLUG BACK

1a. Type of Work  
DRILL

1b. Type of Well  
GAS

2. Operator  
**BURLINGTON RESOURCES** Oil & Gas Company

3. Address & Phone No. of Operator  
PO Box 4289, Farmington, NM 87499  
(505) 326-9700

4. Location of Well  
805' FNL, 840' FWL  
Latitude 36° 33' 0", Longitude 107° 22' 2"

5. Lease Number  
SF-079392  
Unit Reporting Number

6. If Indian, All. or Tribe

7. Unit Agreement Name  
San Juan 27-5 Unit

8. Farm or Lease Name  
San Juan 27-5 Unit

9. Well Number  
121M

10. Field, Pool, Wildcat  
Blanco MV/Basin DK

11. Sec., Twn, Rge, Mer. (NMPM)  
D Sec. 28, T-27-N, R-5-W  
API # 30-039-

12. County  
Rio Arriba

13. State  
NM

14. Distance in Miles from Nearest Town  
9 miles to Gobernador

15. Distance from Proposed Location to Nearest Property or Lease Line  
805'

16. Acres in Lease

17. Acres Assigned to Well  
w/ 295.73 W/2 295.73

18. Distance from Proposed Location to Nearest Well, Drig, Compl, or Applied for on this Lease  
1800'

19. Proposed Depth  
7664'

20. Rotary or Cable Tools  
Rotary

21. Elevations (DF, FT, GR, Etc.)  
6461' GR

22. Approx. Date Work will Start  
DRILLING OPERATIONS AUTHORIZED ARE  
SUBJECT TO COMPLIANCE WITH ATTACHED  
"GENERAL REQUIREMENTS"

23. Proposed Casing and Cementing Program  
See Operations Plan attached

24. Authorized by: [Signature]  
Regulatory/Compliance Administrator

Date 10-23-98

PERMIT NO. \_\_\_\_\_

APPROVAL DATE MAY 13 1999

APPROVED BY /s/ Duane W. Spencer

TITLE Team Lead, Petroleum Management

DATE \_\_\_\_\_

Archaeological Report to be submitted

Threatened and Endangered Species Report to be submitted

NOTE: This format is issued in lieu of U.S. BLM Form 3160-3

Title 18 U.S.C. Section 1001, makes it a crime for any person knowingly and willfully to make to any department or agency of the United States any false, fictitious or fraudulent statements or presentations as to any matter within its jurisdiction.

AMOC

District I  
PO Box 1980, Hobbs, NM 88241-1980

District II  
PO Drawer 00, Artesia, NM 88211-0719

District III  
1000 Rio Brazos Rd., Aztec, NM 87410

District IV  
PO Box 2088, Santa Fe, NM 87504-2088

State of New Mexico  
Energy, Minerals & Natural Resources Department

Form C-  
Revised February 21, 1988

Instructions on back  
Submit to Appropriate District Office

State Lease - 4 Copies  
Fee Lease - 3 Copies

OIL CONSERVATION DIVISION

PO Box 2088  
Santa Fe, NM 87504-2088

RECEIVED  
BLM

98 NOV 23 PM 1:55

AMENDED REPORT

WELL LOCATION AND ACREAGE CERTIFICATION PLAT

API Number 30-039-26020	Pool Code 72319/71599	Pool Name Blanco Mesaverde/Basin Dakota
Property Code 7454	Property Name SAN JUAN 27-5 UNIT	Well Number 121M
GRID No. 14538	Operator Name BURLINGTON RESOURCES OIL & GAS COMPANY	Elevation 6461'

10 Surface Location

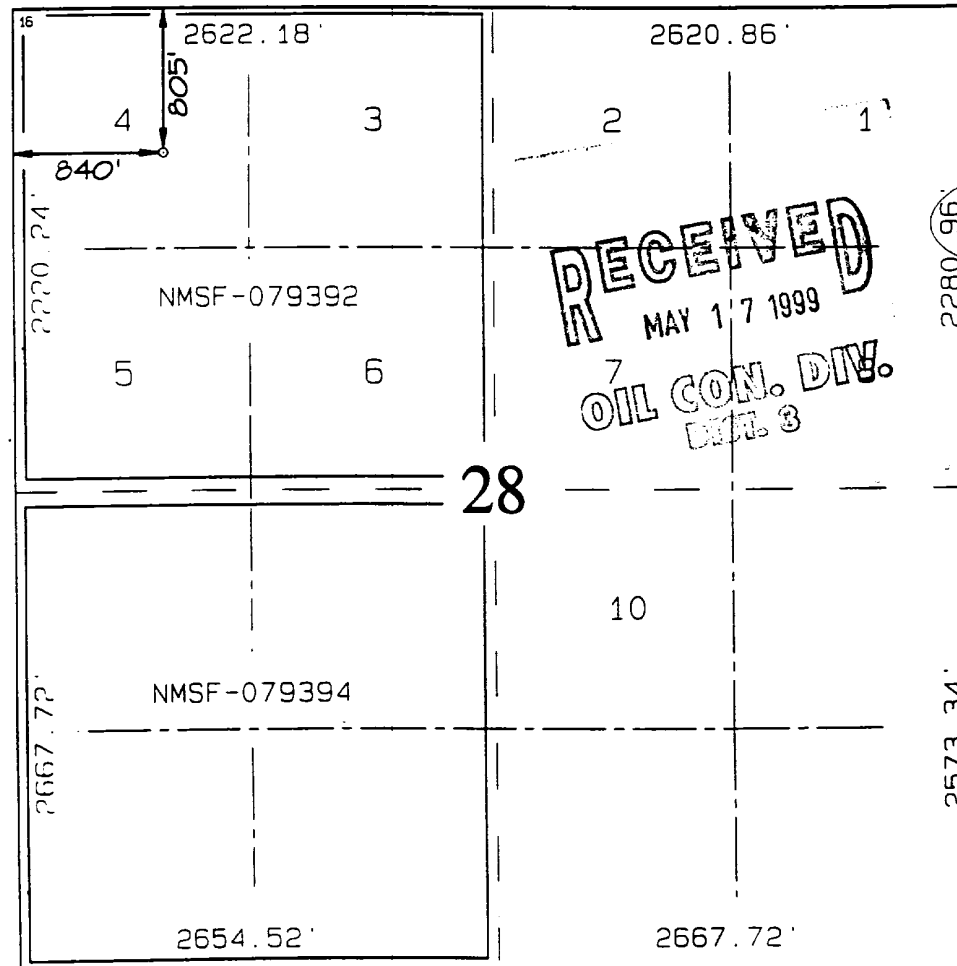
Lot no. C	Section 28	Township 27N	Range 5W	Lot 10n	Feet from the 805	North/South line NORTH	Feet from the 840	East/West line WEST	County RIO ARRIE
--------------	---------------	-----------------	-------------	---------	----------------------	---------------------------	----------------------	------------------------	---------------------

11 Bottom Hole Location If Different From Surface

Lot no.	Section	Township	Range	Lot 10n	Feet from the	North/South line	Feet from the	East/West line	County
---------	---------	----------	-------	---------	---------------	------------------	---------------	----------------	--------

12 Dedicated Acres MV-W/295.73 DK-W/295.73	13 Joint or Infill	14 Consolidation Code	15 Order No.
--------------------------------------------------	--------------------	-----------------------	--------------

NO ALLOWABLE WILL BE ASSIGNED TO THIS COMPLETION UNTIL ALL INTERESTS HAVE BEEN CONSOLIDATED OR A NON-STANDARD UNIT HAS BEEN APPROVED BY THE DIVISION



17 OPERATOR CERTIFICATION  
I hereby certify that the information contained herein is true and complete to the best of my knowledge and belief.

Signature  
Peggy Bradfield  
Printed Name  
Regulatory Administrator  
Title  
10/25/98  
Date

18 SURVEYOR CERTIFICATION  
I hereby certify that the well location shown on this was plotted from field notes of actual surveys made by me or under my supervision, and that the same is true and correct to the best of my belief.

JULY 31, 1998  
Date of Survey  
Signature and Seal of Professional Surveyor  
NEALE C. EDWARDS  
NEW MEXICO  
6857  
Certification Number

## OPERATIONS PLAN

**Well Name:** San Juan 27-5 Unit #121M  
**Location:** 805' FNL, 840' FWL, Sec 28, T-27-N, R-5-W  
Rio Arriba County, NM  
Latitude 36° 33' 0", Longitude 107° 22' 2"  
**Formation:** Blanco Mesa Verde/Basin Dakota  
**Elevation:** 6461' GL

<b><u>Formation Tops:</u></b>	<b><u>Top</u></b>	<b><u>Bottom</u></b>	<b><u>Contents</u></b>
Surface	San Jose	2593'	
Ojo Alamo	2593'	2745'	aquifer
Kirtland	2745'	2759'	gas
Fruitland	2759'	3221'	gas
Pictured Cliffs	3221'	3310'	gas
Lewis	3310'	3676'	gas
<b>Intermediate TD</b>	<b>3410'</b>		
Mesa Verde	3676'	4196'	gas
Chacra	4196'	4872'	gas
Massive Cliff House	4872'	5008'	gas
Menefee	5008'	5383'	gas
Massive Point Lookout	5383'	5866'	gas
Mancos	5866'	6548'	gas
Gallup	6548'	7332'	gas
Greenhorn	7332'	7392'	gas
Graneros	7392'	7516'	gas
Dakota	7516'		gas
<b>TD (4 1/2" liner)</b>	<b>7664'</b>		

### **Logging Program:**

Cased hole - CBL - TD to 200' above TOC, GR/CNL across MV/DK

### **Mud Program:**

<u>Interval</u>	<u>Type</u>	<u>Weight</u>	<u>Vis.</u>	<u>Fluid Loss</u>
0-200'	Spud	8.4-9.0	40-50	no control
200-3410'	LSND	8.4-9.0	30-60	no control
3410-7664'	Gas	n/a	n/a	n/a

Pit levels will be visually monitored to detect gain or loss of fluid control.

### **Casing Program (as listed, the equivalent, or better):**

<u>Hole Size</u>	<u>Depth Interval</u>	<u>Csg. Size</u>	<u>Wt.</u>	<u>Grade</u>
12 1/4"	0' - 200'	9 5/8"	32.3#	K-55
8 3/4"	0' - 3410'	7"	20.0#	J-55
6 1/4"	3310' - 7664'	4 1/2"	10.5#	K-55

### **Tubing Program:**

0' - 7664'	2 3/8"	4.70# EUE
------------	--------	-----------

BURLINGTON RESOURCES OIL & GAS COMPANY SAN JUAN 27-5 UNIT #121M

805' FNL & 840' FNL, SECTION 28, T27N, R5W, N.M.P.M.  
RIO ARriba COUNTY, NEW MEXICO

APD MAP #1

300' NEW BLM CONSTRUCTION  
NWNW SECTION 28, T27N, R5W

