

**UNITED STATES
DEPARTMENT OF THE INTERIOR
BUREAU OF LAND MANAGEMENT**

RECEIVED
BLM

APPLICATION FOR PERMIT TO DRILL, DEEPEN, OR PLUG BACK

98 DEC -9 PM 1:31
FARMINGTON, NM

1a. Type of Work DRILL	5. Lease Number SF-080670
1b. Type of Well GAS	6. If Indian, All. or Tribe
2. Operator BURLINGTON RESOURCES Oil & Gas Company	7. Unit Agreement Name San Juan 27-4 Unit
3. Address & Phone No. of Operator PO Box 4289, Farmington, NM 87499 (505) 326-9700	8. Farm or Lease Name San Juan 27-4 Unit
4. Location of Well 1875' FNL, 405' FWL Latitude 36° 31'55", Longitude 107° 17'55"	9. Well Number 46M
14. Distance in Miles from Nearest Town 70 miles to Bloomfield	10. Field, Pool, Wildcat Blanco MV/Basin DK
15. Distance from Proposed Location to Nearest Property or Lease Line 405'	11. Sec., Twn, Rge, Mer. (NMPM) E Sec. 31, T-27-N, R-4-W
16. Acres in Lease	12. County Rio Arriba
18. Distance from Proposed Location to Nearest Well, Drlg, Compl, or Applied for on this Lease 50'	13. State NM
19. Proposed Depth 8545'	17. Acres Assigned to Well 323.16 W/2, 321.16 N/2
21. Elevations (DF, FT, GR, Etc.) 7308' GR	20. Rotary or Cable Tools Rotary
23. Proposed Casing and Cementing Program See Operations Plan attached	22. Approx. Date Work will Start
24. Authorized by: <u>[Signature]</u> Regulatory/Compliance Administrator	DRILLING OPERATIONS AUTHORIZED ARE SUBJECT TO COMPLIANCE WITH ATTACHED "GENERAL REQUIREMENTS". <u>[Signature]</u> Date

RECEIVED
JUN - 7 1999
OIL CON. DIV.
DIST. 3

JUN 04 1999

PERMIT NO. _____ APPROVAL DATE _____
APPROVED BY /s/ Duane W. Spencer TITLE Team Lead, Petroleum Management DATE _____

**Archaeological Report to be submitted
Threatened and Endangered Species Report to be submitted**

NOTE: This format is issued in lieu of U.S. BLM Form 3160-3
Title 18 U.S.C. Section 1001, makes it a crime for any person knowingly and willfully to make to any department or agency of the United States any false, fictitious or fraudulent statements or presentations as to any matter within its jurisdiction.

DSL-4274

NMOGD

District I
 PO Box 1980, Hobbs NM 88241-1980
 District II
 PO Drawer KK, Arroyo, NM 87211-0719
 District III
 1000 Rio Brazos Rd., Aztec, NM 87410
 District IV
 PO Box 2088, Santa Fe, NM 87504-2088

State of New Mexico
 Energy, Minerals & Natural Resources Department

Form C-102
 Revised February 21, 1994
 Instructions on back
 Submit to Appropriate District Office
 State Lease - 4 Copies
 Fee Lease - 3 Copies

OIL CONSERVATION DIVISION
 PO Box 2088
 Santa Fe, NM 87504-2088

RECEIVED
 BLM
 98 DEC -9 PM 1:31
 070 FARMINGTON, NM

AMENDED REPORT

WELL LOCATION AND ACREAGE DEDICATION PLAT

1 API Number 20-039-26041		2 Pool Code 71599/72319		3 Pool Name Basin Dakota/Blanco Mesaverde	
4 Property Code 7452		5 Property Name SAN JUAN 27-4 UNIT			6 Well Number # 46M
7 OGRID No. 14538		8 Operator Name BURLINGTON RESOURCES OIL & GAS COMPANY			9 Elevation 7308

10 Surface Location

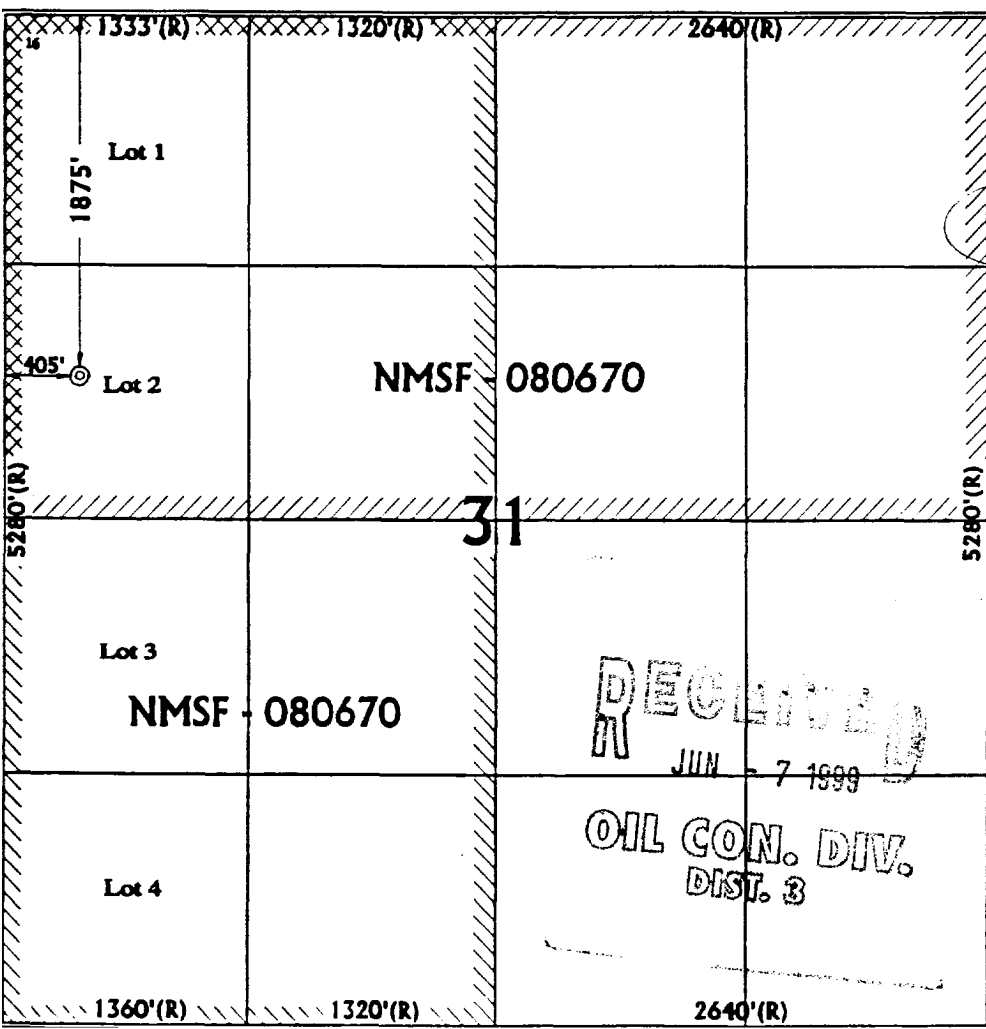
UL or Lot No.	Section	Township	Range	Lot Idn	Feet from the	North/South line	Feet from the	East/West line	County
E	31	27 N	4 W		1875	NORTH	405	WEST	RIO ARRIBA

11 Bottom Hole Location If Different From Surface

UL or lot no.	Section	Township	Range	Lot Idn	Feet from the	North/South line	Feet from the	East/West line	County

12 Dedicated Acres DK: N/321.16 MV: W/323.16	13 Joint or Infill	14 Consolidation Code	15 Order No.
--	--------------------	-----------------------	--------------

NO ALLOWABLE WILL BE ASSIGNED TO THIS COMPLETION UNTIL ALL INTEREST HAVE BEEN CONSOLIDATED OR A NON-STANDARD UNIT HAS BEEN APPROVED BY THE DIVISION



17 OPERATOR CERTIFICATION
 I hereby certify that the information contained herein is true and complete to the best of my knowledge and belief.

Peggy Bradfield
 Signature
 Peggy Bradfield
 Printed Name
 Regulatory Administrator
 Title
 10-25-98
 Date

18 SURVEYOR CERTIFICATION
 I hereby certify that the well location shown on this plat was plotted from field notes of actual surveys made by me or under my supervision, and that the same is true and correct to the best of my belief.

August 11, 1998
 Date of Survey

Gregory D. ...
 Signature and Seal of Professional Surveyor

7016
 Certificate Number

RECEIVED
 JUN - 7 1999
 OIL CON. DIV.
 DIST. 3

OPERATIONS PLAN

Well Name: San Juan 27-4 Unit #46M
Location: 1875' FNL, 405' FWL, Sec 31, T-27-N, R-4-W
Rio Arriba County, NM
Latitude 36° 31' 55", Longitude 107° 17' 55"
Formation: Blanco Mesa Verde/Basin Dakota
Elevation: 7308' GL

<u>Formation Tops:</u>	<u>Top</u>	<u>Bottom</u>	<u>Contents</u>
Surface	San Jose	3518'	
Ojo Alamo	3518'	3641'	aquifer
Kirtland	3641'	3724'	gas
Fruitland	3724'	4092'	gas
Pictured Cliffs	4092'	4164'	gas
Lewis	4164'	4570'	gas
Intermediate TD	4264'		
Mesa Verde	4570'	5063'	gas
Chacra	5063'	5781'	gas
Massive Cliff House	5781'	5917'	gas
Menefee	5917'	6253'	gas
Massive Point Lookout	6253'	6760'	gas
Mancos	6760'	7415'	gas
Gallup	7415'	8217'	gas
Greenhorn	8217'	8274'	gas
Graneros	8274'	8429'	gas
Dakota	8429'		gas
TD (4 1/2" liner)	8545'		

Logging Program:

Cased hole - CBL - TD to 200' above TOC, GR/CNL across MV/DK

Mud Program:

<u>Interval</u>	<u>Type</u>	<u>Weight</u>	<u>Vis.</u>	<u>Fluid Loss</u>
0-200'	Spud	8.4-9.0	40-50	no control
200-4264'	LSND	8.4-9.0	30-60	no control
4264-8545'	Gas	n/a	n/a	n/a

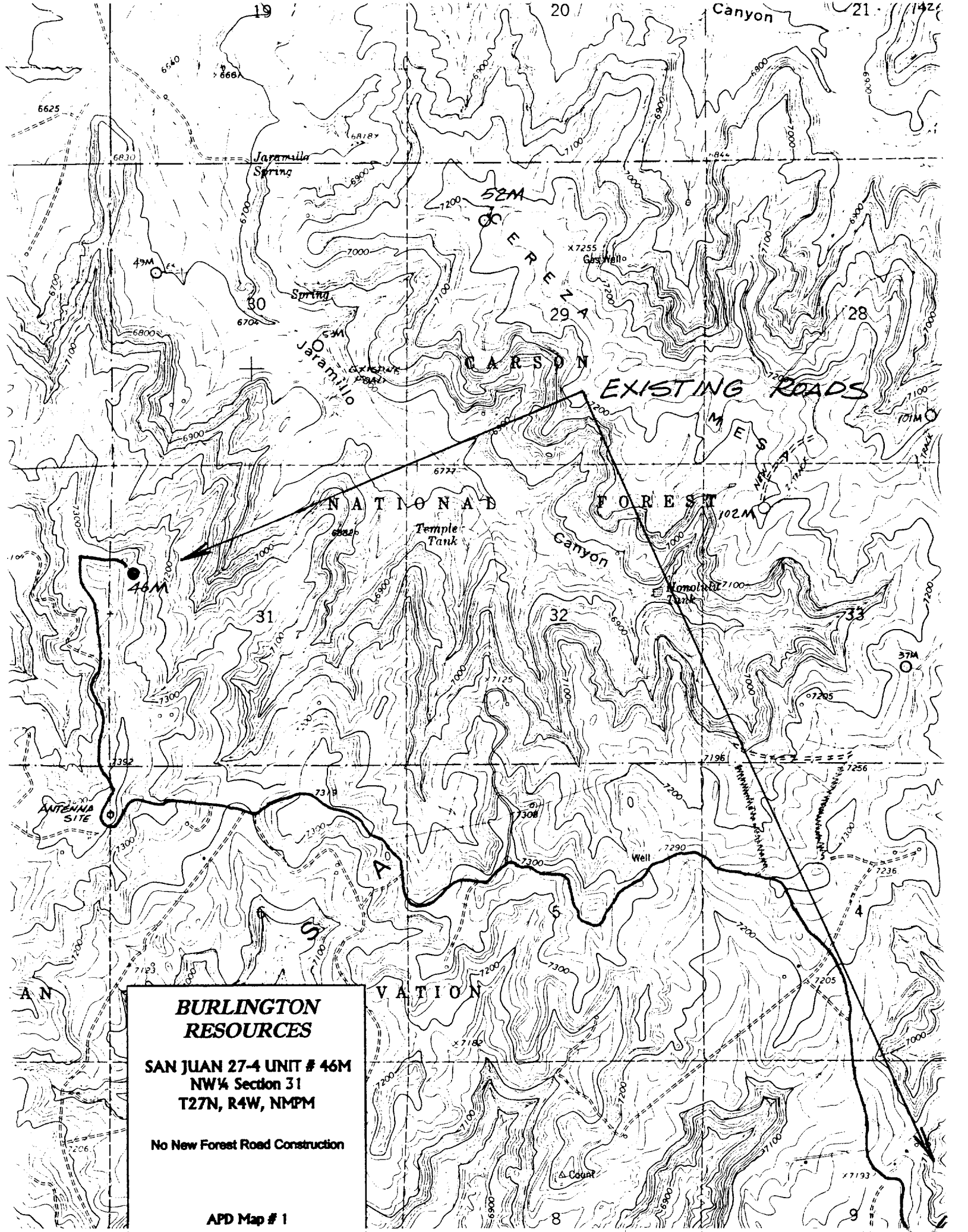
Pit levels will be visually monitored to detect gain or loss of fluid control.

Casing Program (as listed, the equivalent, or better):

<u>Hole Size</u>	<u>Depth Interval</u>	<u>Csg. Size</u>	<u>Wt.</u>	<u>Grade</u>
12 1/4"	0' - 200'	9 5/8"	32.3#	K-55
8 3/4"	0' - 4264'	7"	20.0#	J-55
6 1/4"	4164' - 8545'	4 1/2"	10.5#	K-55

Tubing Program:

0' - 8545' 2 3/8" 4.70# EUE



**BURLINGTON
RESOURCES**

SAN JUAN 27-4 UNIT # 46M
NW¼ Section 31
T27N, R4W, NMPM

No New Forest Road Construction

APD Map # 1