

UNITED STATES
DEPARTMENT OF THE INTERIOR
BUREAU OF LAND MANAGEMENT

APPLICATION FOR PERMIT TO DRILL, DEEPEN, OR PLUG BACK

11

1a. Type of Work DRILL	5. Lease Number SF-079493 Unit Reporting Number	
1b. Type of Well GAS	6. If Indian, All. or Tribe	
2. Operator BURLINGTON RESOURCES Oil & Gas Company	7. Unit Agreement Name San Juan 27-5 Unit	
3. Address & Phone No. of Operator PO Box 4289, Farmington, NM 87499 (505) 326-9700	8. Farm or Lease Name San Juan 27-5 Unit 9. Well Number 190M	
4. Location of Well 1035' FSL, 1705' FEL Latitude 36° 32.4, Longitude 107° 18.4	10. Field, Pool, Wildcat Blanco MV/Basin DK 11. Sec., Twn, Rge, Mer. (NMPM) Sec. 25, T-27-N, R-5-W API # 30-039-76083	
14. Distance in Miles from Nearest Town 11 miles from Gobernador	12. County Rio Arriba	13. State NM
15. Distance from Proposed Location to Nearest Property or Lease Line 1035'	17. Acres Assigned to Well E/2 320 E/2 320	
16. Acres in Lease		
18. Distance from Proposed Location to Nearest Well, Drig, Compl, or Applied for on this Lease 200'		
19. Proposed Depth 8400'	20. Rotary or Cable Tools Rotary	
21. Elevations (DF, FT, GR, Etc.) 7163' GR	22. Approx. Date Work will Start	
23. Proposed Casing and Cementing Program See Operations Plan attached	DRILLING OPERATIONS AUTHORIZED ARE SUBJECT TO COMPLIANCE WITH ATTACHED "GENERAL REQUIREMENTS"	
24. Authorized by: <u>[Signature]</u> Regulatory/Compliance Administrator	Date <u>1-18-99</u>	

PERMIT NO. _____ APPROVAL DATE JUN 24 1999
APPROVED BY /S/ Duane W. Spencer TITLE Team Lead, Petroleum Management DATE _____

Archaeological Report to be submitted

Threatened and Endangered Species Report to be submitted

NOTE: This format is issued in lieu of U.S. BLM Form 3160-3

Title 18 U.S.C. Section 1001, makes it a crime for any person knowingly and willfully to make to any department or agency of the United States any false, fictitious or fraudulent statements or presentations as to any matter within its jurisdiction.

DL
NMOC

District I
PO Box 1980, Hobbs, NM 88241-1980

State of New Mexico
Energy, Minerals & Natural Resources Department

Form C-10
Revised February 21, 199

District II
PO Drawer DD, Artesia, NM 88211-0719

OIL CONSERVATION DIVISION
PO Box 2088
Santa Fe, NM 87504-2088

Instructions on back
Submit to Appropriate District Office
State Lease - 4 Copies
Fee Lease - 3 Copies

District III
1000 Rio Brazos Rd., Aztec, NM 87410

District IV
PO Box 2088, Santa Fe, NM 87504-2088

JUN 26 2010 17 ☐ AMENDED REPORT

WELL LOCATION AND ACREAGE DEDICATION PLAT

*API Number 30-039-26083		*Pool Code 72319/71599	*Pool Name Blanco Mesaverde/Basin Dakota
*Property Code 7454	*Property Name SAN JUAN 27-5 UNIT		*Well Number 190M
*GRID No. 14538	*Operator Name BURLINGTON RESOURCES OIL & GAS COMPANY		*Elevation 7163'

¹⁰ Surface Location

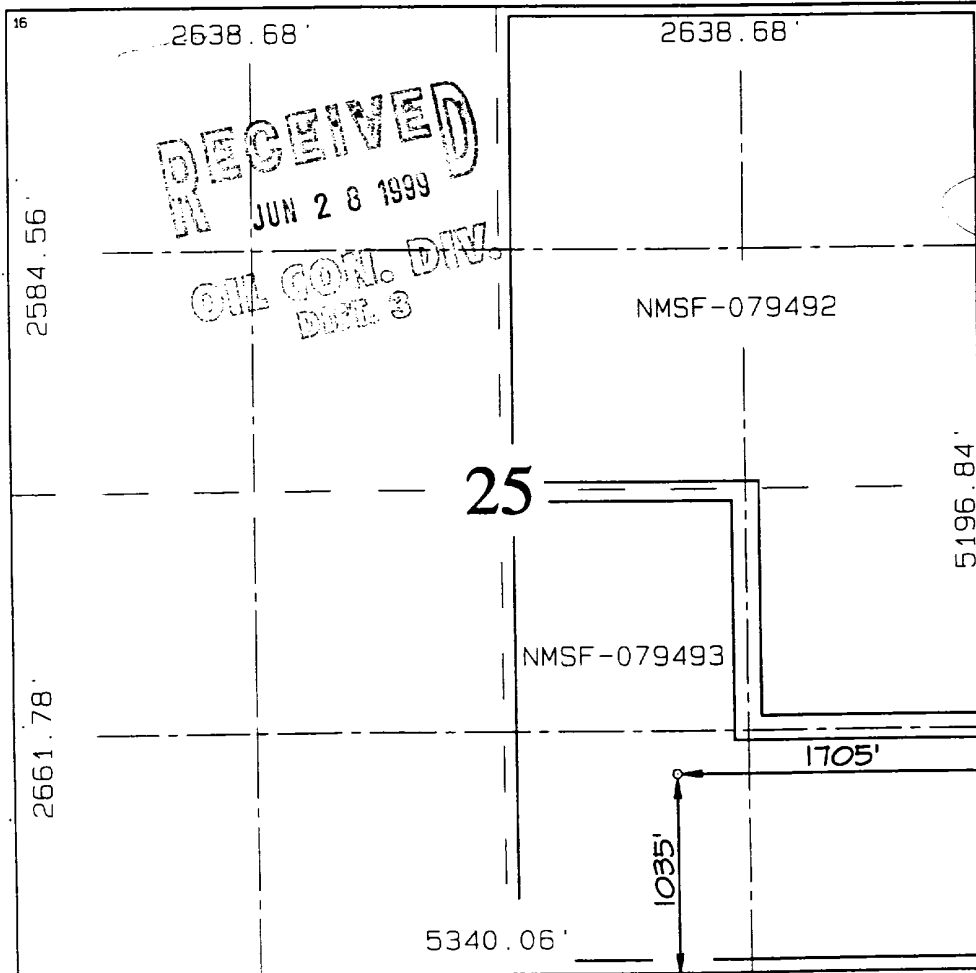
UL or lot no. 0	Section 25	Township 27N	Range 5W	Lot Idn	Feet from the 1035	North/South line SOUTH	Feet from the 1705	East/West line EAST	County RIO ARriba
--------------------	---------------	-----------------	-------------	---------	-----------------------	---------------------------	-----------------------	------------------------	----------------------

¹¹ Bottom Hole Location If Different From Surface

UL or lot no.	Section	Township	Range	Lot Idn	Feet from the	North/South line	Feet from the	East/West line	County
---------------	---------	----------	-------	---------	---------------	------------------	---------------	----------------	--------

¹² Dedicated Acres MV - E/320 DK - E/320	¹³ Joint or Infill	¹⁴ Consolidation Code	¹⁵ Order No.
---	-------------------------------	----------------------------------	-------------------------

NO ALLOWABLE WILL BE ASSIGNED TO THIS COMPLETION UNTIL ALL INTERESTS HAVE BEEN CONSOLIDATED OR A NON-STANDARD UNIT HAS BEEN APPROVED BY THE DIVISION



¹⁷ OPERATOR CERTIFICATION

I hereby certify that the information contained herein is true and complete to the best of my knowledge and belief.

Peggy Bradfield
Signature
Peggy Bradfield
Printed Name
Regulatory Administrator
Title
1-18-99
Date

¹⁸ SURVEYOR CERTIFICATION

I hereby certify that the well location shown on this plat was plotted from field notes of actual surveys made by me or under my supervision and that the same is true and correct to the best of my belief.

AUGUST 12, 1998
Date of Survey
Signature and Seal of Professional Surveyor
NEALE C. EDWARDS
NEW MEXICO
68559
Certificate Number

OPERATIONS PLAN

Well Name: San Juan 27-5 Unit #190M
Location: 1035'FSL, 1705'FEL, Sec 25, T-27-N, R-5-W
Rio Arriba County, NM
Latitude 36° 32.4, Longitude 107° 18.4
Formation: Blanco Mesa Verde/Basin Dakota
Elevation: 7163'GL

<u>Formation Tops:</u>	<u>Top</u>	<u>Bottom</u>	<u>Contents</u>
Surface	San Jose	3361'	
Ojo Alamo	3361'	3501'	aquifer
Kirtland	3501'	3573'	gas
Fruitland	3573'	3960'	gas
Pictured Cliffs	3960'	4031'	gas
Lewis	4031'	4429'	gas
Intermediate TD	4131'		
Mesa Verde	4429'	4930'	gas
Chacra	4930'	5648'	gas
Massive Cliff House	5648'	5779'	gas
Menefee	5779'	6119'	gas
Massive Point Lookout	6119'	6621'	gas
Mancos	6621'	7275'	gas
Gallup	7275'	8076'	gas
Greenhorn	8076'	8133'	gas
Graneros	8133'	8260'	gas
Dakota	8260'		gas
TD (4 1/2"liner)	8400'		

Logging Program:

Cased hole - CBL-CCL-GR - TD to surface

Mud Program:

<u>Interval</u>	<u>Type</u>	<u>Weight</u>	<u>Vis.</u>	<u>Fluid Loss</u>
0- 200'	Spud	8.4-9.0	40-50	no control
200- 4131'	LSND	8.4-9.0	30-60	no control
4131- 8400'	Gas	n/a	n/a	n/a

Pit levels will be visually monitored to detect gain or loss of fluid control.

Casing Program (as listed, the equivalent, or better):

<u>Hole Size</u>	<u>Depth Interval</u>	<u>Csg.Size</u>	<u>Wt.</u>	<u>Grade</u>
12 1/4"	0' - 200'	9 5/8"	32.3#	H-40
8 3/4"	0' - 4131'	7"	20.0#	J-55
6 1/4"	4031' - 8400'	4 1/2"	10.5#	K-55

Tubing Program:

0' - 8400' 2 3/8" 4.70# EUE

BURLINGTON RESOURCES OIL & GAS COMPANY SAN JUAN 27-5 UNIT #190M
1035' FSL & 1705' FEL, SECTION 25, T27N, R5W, N.M.P.M.
RIO ARriba COUNTY, NEW MEXICO

