

UNITED STATES
DEPARTMENT OF THE INTERIOR
BUREAU OF LAND MANAGEMENT

APPLICATION FOR PERMIT TO DRILL, DEEPEN, OR PLUG BACK

11

RECEIVED
JUN 28 1999
FARMINGTON, NM
7454

1a. Type of Work
DRILL

5. Lease Number
SF-079493A
Unit Reporting Number
MV-891000950A
DK-8910009500

1b. Type of Well
GAS

6. If Indian, All. or Tribe

2. Operator
BURLINGTON RESOURCES Oil & Gas Company
JUN 28 1999
OIL CON. DIV.
DIST. 3

7. Unit Agreement Name
San Juan 27-5 Unit

3. Address & Phone No. of Operator
PO Box 4289, Farmington, NM 87499
(505) 326-9700

8. Farm or Lease Name
San Juan 27-5 Unit

9. Well Number
144M

4. Location of Well
1685' FSL, 995' FEL
Latitude 36° 31.7, Longitude 107° 19.1

10. Field, Pool, Wildcat
Blanco MV/Basin DK

11. Sec., Twn, Rge, Mer. (NMPM)
I Sec. 35, T-27-N, R-5-W
API # 30-039-26084

14. Distance in Miles from Nearest Town
11 miles from Gobernador

12. County
Rio Arriba

13. State
NM

15. Distance from Proposed Location to Nearest Property or Lease Line
995'

16. Acres in Lease

17. Acres Assigned to Well
MV - 304.54 E/2
DK - 320 S/2

18. Distance from Proposed Location to Nearest Well, Drig, Compl, or Applied for on this Lease
200'

19. Proposed Depth
8441'

20. Rotary or Cable Tools
Rotary

21. Elevations (DF, FT, GR, Etc.)
7264' GR

22. Approx. Date Work will Start
1-19-99

23. Proposed Casing and Cementing Program
See Operations Plan attached

24. Authorized by: Duane W. Spencer
Regulatory/Compliance Administrator

DRILLING OPERATIONS AUTHORIZED ARE
SUBJECT TO COMPLIANCE WITH ATTACHED
"GENERAL REQUIREMENTS"

PERMIT NO.

APPROVAL DATE

JUN 24 1999

APPROVED BY

IS/Duane W. Spencer

TITLE

Team Lead, Petroleum Management

DATE

Archaeological Report to be submitted

Threatened and Endangered Species Report to be submitted

NOTE: This format is issued in lieu of U.S. BLM Form 3160-3

Title 18 U.S.C. Section 1001, makes it a crime for any person knowingly and willfully to make to any department or agency of the United States any false, fictitious or fraudulent statements or presentations as to any matter within its jurisdiction.

DR

AMCCD

District I
PO Box 1980, Hobbs, NM 88241-1980

District II
PO Drawer DD, Artesia, NM 88211-0719

District III
1000 Rio Brazos Rd., Aztec, NM 87410

District IV
PO Box 2088, Santa Fe, NM 87504-2088

State of New Mexico
Energy, Minerals & Natural Resources Department

Form C-102
Revised February 21, 1994
Instructions on back
Submit to Appropriate District Office
State Lease - 4 Copies
Fee Lease - 3 Copies

OIL CONSERVATION DIVISION
PO Box 2088
Santa Fe, NM 87504-2088

RECEIVED
JUN 23 1998
AM 10:17
☐ AMENDED REPORT

WELL LOCATION AND ACREAGE DEDICATION PLAT

¹ API Number 30-039-26084	² Pool Code 72319/71599	³ Pool Name Blanco Mesaverde/Basin Dakota
⁴ Property Code 7454	⁵ Property Name SAN JUAN 27-5 UNIT	⁶ Well Number 144M
⁷ GRID No. 14538	⁸ Operator Name BURLINGTON RESOURCES OIL & GAS COMPANY	⁹ Elevation 7264'

¹⁰ Surface Location

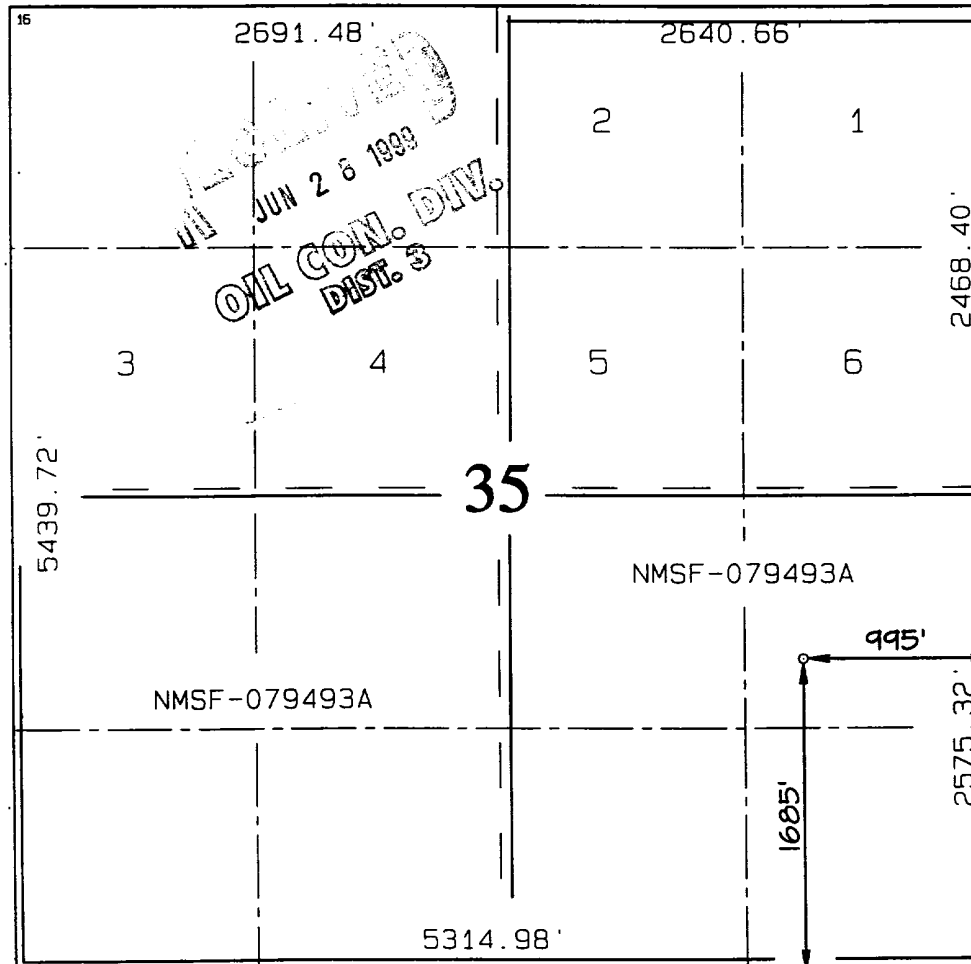
UL or lot no. I	Section 35	Township 27N	Range 5W	Lot Idn	Feet from the 1685	North/South line SOUTH	Feet from the 995	East/West line EAST	County RIO ARriba
--------------------	---------------	-----------------	-------------	---------	-----------------------	---------------------------	----------------------	------------------------	----------------------

¹¹ Bottom Hole Location If Different From Surface

UL or lot no.	Section	Township	Range	Lot Idn	Feet from the	North/South line	Feet from the	East/West line	County
---------------	---------	----------	-------	---------	---------------	------------------	---------------	----------------	--------

¹² Dedicated Acres MV-E/304.54 DK-S/320	¹³ Joint or Infill	¹⁴ Consolidation Code	¹⁵ Order No.
--	-------------------------------	----------------------------------	-------------------------

NO ALLOWABLE WILL BE ASSIGNED TO THIS COMPLETION UNTIL ALL INTERESTS HAVE BEEN CONSOLIDATED
OR A NON-STANDARD UNIT HAS BEEN APPROVED BY THE DIVISION



¹⁷ OPERATOR CERTIFICATION
I hereby certify that the information contained herein is true and complete to the best of my knowledge and belief

Peggy Bradfield
Signature
Peggy Bradfield
Printed Name
Regulatory Administrator
Title
1-18-99
Date

¹⁸ SURVEYOR CERTIFICATION
I hereby certify that the well location shown on this plat was plotted from field notes of actual surveys made by me or under my supervision, and that the same is true and correct to the best of my belief.

AUGUST 12, 1998
Date of Survey
Signature and Seal of Registered Professional Surveyor
NEALE C. EDWARDS
NEW MEXICO
6857
6857
Certificate Number

OPERATIONS PLAN

Well Name: San Juan 27-5 Unit #144M
Location: 1685' FSL, 995' FEL, Sec 35, T-27-N, R-5-W
Rio Arriba County, NM
Latitude 36° 31.7, Longitude 107° 19.1
Formation: Blanco Mesa Verde/Basin Dakota
Elevation: 7264' GL

<u>Formation Tops:</u>	<u>Top</u>	<u>Bottom</u>	<u>Contents</u>
Surface	San Jose	3406'	
Ojo Alamo	3406'	3551'	aquifer
Kirtland	3551'	3614'	gas
Fruitland	3614'	4011'	gas
Pictured Cliffs	4011'	4090'	gas
Lewis	4090'	4471'	gas
Intermediate TD	4190'		
Mesa Verde	4471'	4976'	gas
Chacra	4976'	5668'	gas
Massive Cliff House	5668'	5791'	gas
Menefee	5791'	6167'	gas
Massive Point Lookout	6167'	6653'	gas
Mancos	6653'	7325'	gas
Gallup	7325'	8121'	gas
Greenhorn	8121'	8181'	gas
Graneros	8181'	8304'	gas
Dakota	8304'		gas
TD (4 1/2" liner)	8441'		

Logging Program:

Cased hole - CBL-CCL-GR - TD to surface

Mud Program:

<u>Interval</u>	<u>Type</u>	<u>Weight</u>	<u>Vis.</u>	<u>Fluid Loss</u>
0- 500'	Spud	8.4-9.0	40-50	no control
500- 4190'	LSND	8.4-9.0	30-60	no control
4190- 8441'	Gas	n/a	n/a	n/a

Pit levels will be visually monitored to detect gain or loss of fluid control.

Casing Program (as listed, the equivalent, or better):

<u>Hole Size</u>	<u>Depth Interval</u>	<u>Csg. Size</u>	<u>Wt.</u>	<u>Grade</u>
12 1/4"	0' - 500'	9 5/8"	32.3#	H-40
8 3/4"	0' - 4190'	7"	20.0#	J-55
6 1/4"	4090' - 8441'	4 1/2"	10.5#	K-55

Tubing Program:

0' - 8441' 2 3/8" 4.70# EUE

BURLINGTON RESOURCES OIL & GAS COMPANY SAN JUAN 27-5 UNIT #144M

1685' FSL & 995' FEL, SECTION 35, T27N, R5W, N.M.P.M.
RIO ARriba COUNTY, NEW MEXICO

APD MAP #1

NO NEW CONSTRUCTION
NE/SE SECTION 35, T27N, R5W

