

UNITED STATES
DEPARTMENT OF THE INTERIOR
BUREAU OF LAND MANAGEMENT

APPLICATION FOR PERMIT TO DRILL, DEEPEN, OR PLUG BACK

1a. Type of Work
DRILL

5. Lease Number
SF-079392
Unit Reporting Number

1b. Type of Well
GAS

If Indian, All. or Tribe

2. Operator
BURLINGTON RESOURCES Oil & Gas Company

7. Unit Agreement Name
San Juan 27-5 Unit

3. Address & Phone No. of Operator
PO Box 4289, Farmington, NM 87499
(505) 326-9700

8. Farm or Lease Name
San Juan 27-5 Unit

9. Well Number
123M

4. Location of Well
1580' FSL, 1585' FEL
Latitude 36° 34.2, Longitude 107° 22.7

10. Field, Pool, Wildcat
Blanco MV/Basin DK

11. Sec., Twn, Rge, Mer. (NMPM)
Sec. 17, T-27-N, R-5-W
API # 30-039-26087

14. Distance in Miles from Nearest Town
9 miles from Gobernador

12. County
Rio Arriba

13. State
NM

15. Distance from Proposed Location to Nearest Property or Lease Line
1580'

16. Acres in Lease

17. Acres Assigned to Well
MV - 321.74 E/2
DK - 330.33 S/2

18. Distance from Proposed Location to Nearest Well, Drig, Compl, or Applied for on this Lease
400'

19. Proposed Depth
7691'

This action is subject to technical and procedural review pursuant to 43 CFR 3165.3 and appeal pursuant to 43 CFR 3165.4.

20. Rotary or Cable Tools
Rotary

21. Elevations (DF, FT, GR, Etc.)
6465' GR

22. Approx. Date Work will Start
12-23-98

23. Proposed Casing and Cementing Program
See Operations Plan attached

24. Authorized by: [Signature]
Regulatory/Compliance Administrator

Date
4/12/99

PERMIT NO. _____ APPROVAL DATE 4/12/99

APPROVED BY /s/ Duane W. Spencer TITLE Team Lead, Petroleum Management DATE APR 12 1999

Archaeological Report to be submitted

Threatened and Endangered Species Report to be submitted

NOTE: This format is issued in lieu of U.S. BLM Form 3160-3

Title 18 U.S.C. Section 1001, makes it a crime for any person knowingly and willfully to make to any department or agency of the United States any false, fictitious or fraudulent statements or presentations as to any matter within its jurisdiction.

NMOCD

District I
PO Box 1980, Hobbs, NM 88241-1980

District II
PO Drawer DD, Artesia, NM 88211-0719

District III
1000 Rio Brazos Rd., Aztec, NM 87410

District IV
PO Box 2088, Santa Fe, NM 87504-2088

State of New Mexico
Energy, Minerals & Natural Resources Department

OIL CONSERVATION DIVISION
PO Box 2088
Santa Fe, NM 87504-2088

Form C-10
Revised February 21, 1995

Submit to Appropriate District Office
State Lease - 4 Copies
Fee Lease - 3 Copies

RECEIVED
90 JUN 28 AM 10:15
☐ AMENDED REPORT

WELL LOCATION AND ACREAGE DEDICATION PLAT

*API Number 30-039-26087		*Pool Code 72319/71599	*Pool Name Blanco Mesaverde/Basin Dakota
*Property Code 7454	*Property Name SAN JUAN 27-5 UNIT		*Well Number 123M
*GRID No. 14538	*Operator Name BURLINGTON RESOURCES OIL & GAS COMPANY		*Elevation 6465'

10 Surface Location

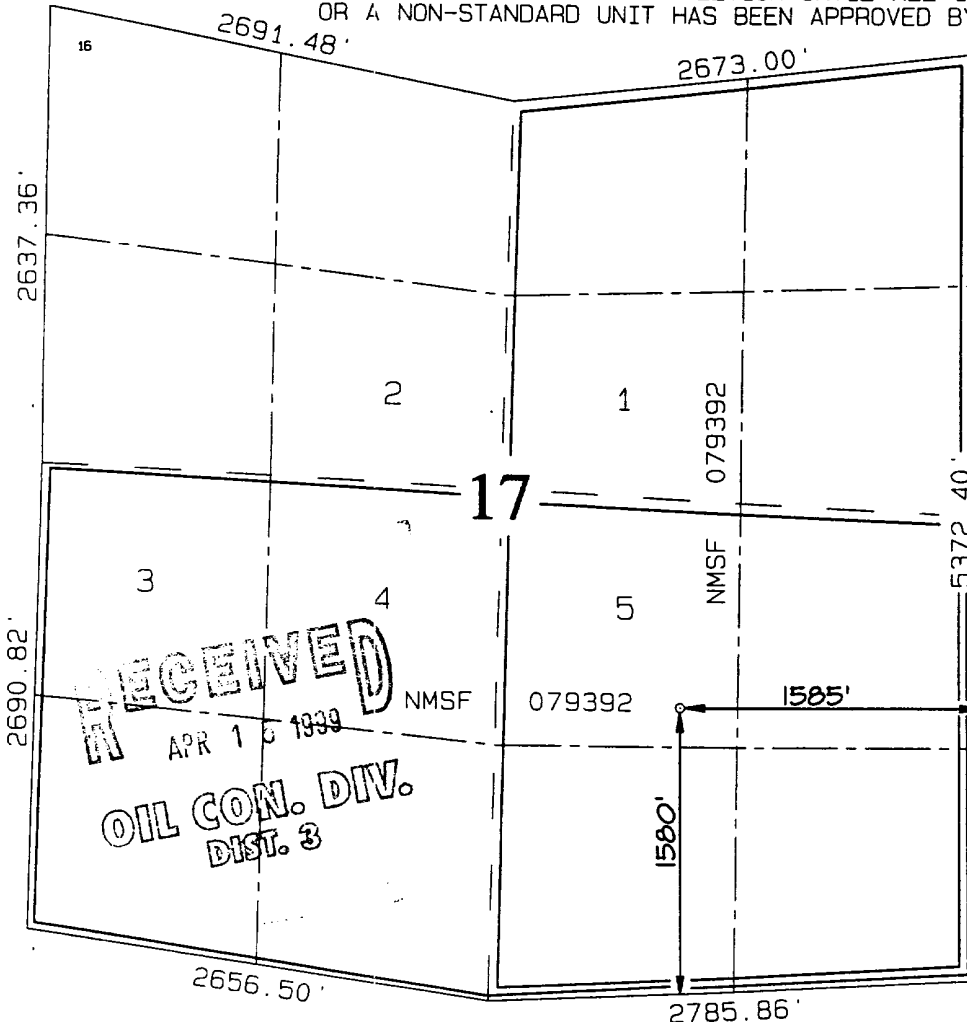
UL or lot no. J	Section 17	Township 27N	Range 5W	Lot Idn	Feet from the 1580	North/South line SOUTH	Feet from the 1585	East/West line EAST	County RIO ARriba
--------------------	---------------	-----------------	-------------	---------	-----------------------	---------------------------	-----------------------	------------------------	----------------------

11 Bottom Hole Location If Different From Surface

UL or lot no.	Section	Township	Range	Lot Idn	Feet from the	North/South line	Feet from the	East/West line	County
---------------	---------	----------	-------	---------	---------------	------------------	---------------	----------------	--------

12 Dedicated Acres MV-E/321.74 DK-S/330.33		13 Joint or Infill	14 Consolidation Code	15 Order No.
--	--	--------------------	-----------------------	--------------

NO ALLOWABLE WILL BE ASSIGNED TO THIS COMPLETION UNTIL ALL INTERESTS HAVE BEEN CONSOLIDATED
OR A NON-STANDARD UNIT HAS BEEN APPROVED BY THE DIVISION



17 OPERATOR CERTIFICATION

I hereby certify that the information contained herein is true and complete to the best of my knowledge and belief.

Peggy Bradfield
Signature

Peggy Bradfield
Printed Name

Regulatory Administrator
Title

12-23-98
Date

18
Date

SURVEYOR CERTIFICATION

I hereby certify that the well location shown on this plat was plotted from field notes of actual surveys made by or under my supervision and that the same is true and correct to the best of my belief.

NOVEMBER 19, 1998

Date of Survey

Signature and Seal of Professional Surveyor

NEALE C. EDWARDS
NEW MEXICO
6857
6857
Certificate Number

OPERATIONS PLAN

Well Name: San Juan 27-5 Unit #123M
Location: 1580'FSL, 1585'FEL, Sec 17, T-27-N, R-5-W
Rio Arriba County, NM
Latitude 36° 34.2, Longitude 107° 22.7
Formation: Blanco Mesa Verde/Basin Dakota
Elevation: 6465'GL

<u>Formation Tops:</u>	<u>Top</u>	<u>Bottom</u>	<u>Contents</u>
Surface	San Jose	2577'	
Ojo Alamo	2577'	2744'	aquifer
Kirtland	2744'	2816'	gas
Fruitland	2816'	3242'	gas
Pictured Cliffs	3242'	3352'	gas
Lewis	3352'	3728'	gas
Intermediate TD	3452'		
Mesa Verde	3728'	4203'	gas
Chacra	4203'	4899'	gas
Massive Cliff House	4899'	5042'	gas
Menefee	5042'	5397'	gas
Massive Point Lookout	5844'	6333'	gas
Mancos	5905'	6580'	gas
Gallup	6580'	7364'	gas
Greenhorn	7364'	7406'	gas
Graneros	7406'	7539'	gas
Dakota	7539'		gas
TD (4 1/2"liner)	7691'		

Logging Program:

Cased hole - CBL-CCL-GR - TD to surface

Mud Program:

<u>Interval</u>	<u>Type</u>	<u>Weight</u>	<u>Vis.</u>	<u>Fluid Loss</u>
0- 200'	Spud	8.4-9.0	40-50	no control
200- 3452'	LSND	8.4-9.0	30-60	no control
3452-7691'	Gas	n/a	n/a	n/a

Pit levels will be visually monitored to detect gain or loss of fluid control.

Casing Program (as listed, the equivalent, or better):

<u>Hole Size</u>	<u>Depth Interval</u>	<u>Csg.Size</u>	<u>Wt.</u>	<u>Grade</u>
12 1/4"	0' - 200'	9 5/8"	32.3#	H-40
8 3/4"	0' - 3452'	7"	20.0#	J-55
6 1/4"	3352' - 7691'	4 1/2"	10.5#	K-55

Tubing Program:

0' - 7691' 2 3/8" 4.70# EUE

BURLINGTON RESOURCES OIL & GAS COMPANY SAN JUAN 27-5 UNIT #123M

1580' FSL & 1585' FEL, SECTION 17, T27N, R5W, N.M.P.M.

RIO ARRIBA COUNTY, NEW MEXICO

APD MAP #1

NO NEW CONSTRUCTION
NWSE SECTION 17, T27N, R5W.

