

UNITED STATES
DEPARTMENT OF THE INTERIOR
BUREAU OF LAND MANAGEMENT

APPLICATION FOR PERMIT TO DRILL, DEEPEN, OR PLUG BACK

1a. Type of Work DRILL	5. Lease Number SF-079493A Unit Reporting Number 89100950B	
1b. Type of Well GAS	6. If Indian, All. or Tribe	
2. Operator BURLINGTON RESOURCES Oil & Gas Company	7. Unit Agreement Name San Juan 27-5 Unit	
3. Address & Phone No. of Operator PO Box 4289, Farmington, NM 87401 (505) 326-9700	8. Farm or Lease Name San Juan 27-5 Unit 9. Well Number 161R	
4. Location of Well 865' FNL, 1505' FWL Latitude 36° 32.1, Longitude 107° 19.9	10. Field, Pool, Wildcat Tapacito Pict. Cliffs 11. Sec., Twn, Rge, Mer. (NMPM) C Sec. 35, T-27-N, R-5-W API # 30-039-26291	
14. Distance in Miles from Nearest Town 52 miles from Blanco	12. County Rio Arriba	13. State NM
15. Distance from Proposed Location to Nearest Property or Lease Line 865'	17. Acres Assigned to Well 316.94 156.94	
18. Distance from Proposed Location to Nearest Well, Drig, Compl, or Applied for on this Lease 600'	20. Rotary or Cable Tools Rotary	
19. Proposed Depth 3566'	21. Elevations (DF, FT, GR, Etc.) 6602' GR	
23. Proposed Casing and Cementing Program See Operations Plan attached	22. Approx. Date Work will Start 12-6-99	
24. Authorized by: <u><i>J. Regan Cole</i></u> Regulatory/Compliance Administrator	DRILLING OPERATIONS AUTHORIZED ARE SUBJECT TO COMPLIANCE WITH ATTACHED "GENERAL REQUIREMENTS"	

PERMIT NO. _____ APPROVAL DATE _____
APPROVED BY /s/ Charlie Beecham TITLE _____ DATE MAR 31 2000

Archaeological Report to be submitted

Threatened and Endangered Species Report to be submitted

NOTE: This format is issued in lieu of U.S. BLM Form 3160-3

Title 18 U.S.C. Section 1001, makes it a crime for any person knowingly and willfully to make to any department or agency of the United States any false, fictitious or fraudulent statements or presentations as to any matter within its jurisdiction.

oh se
ctf

MMOCD

DISTRICT I
P.O. Box 1980, Hobbs, N.M. 88241-1980

DISTRICT II
P.O. Drawer DD, Artesia, N.M. 88211-0719

DISTRICT III
1000 Rio Brazos Rd., Aztec, N.M. 87410

DISTRICT IV
P.O. Box 2088, Santa Fe, NM 87504-2088

State of New Mexico
Energy, Minerals & Natural Resources Department

Form C-1

Revised February 21, 1988

Instructions on back
Submit to Appropriate District Office
State Lease - 4 Copies
Fee Lease - 3 Copies

OIL CONSERVATION DIVISION

P.O. Box 2088
Santa Fe, NM 87504-2088

☐ AMENDED REPORT

WELL LOCATION AND ACREAGE DEDICATION PLAT

API Number 30-039-26291	Pool Code 85920	Pool Name Tapacito Pictured Cliffs
Property Code 7454	Property Name SAN JUAN 27-5 UNIT	Well Number 161R
GRID No. 14538	Operator Name BURLINGTON RESOURCES OIL & GAS COMPANY	Elevation 6602'

¹⁰ Surface Location

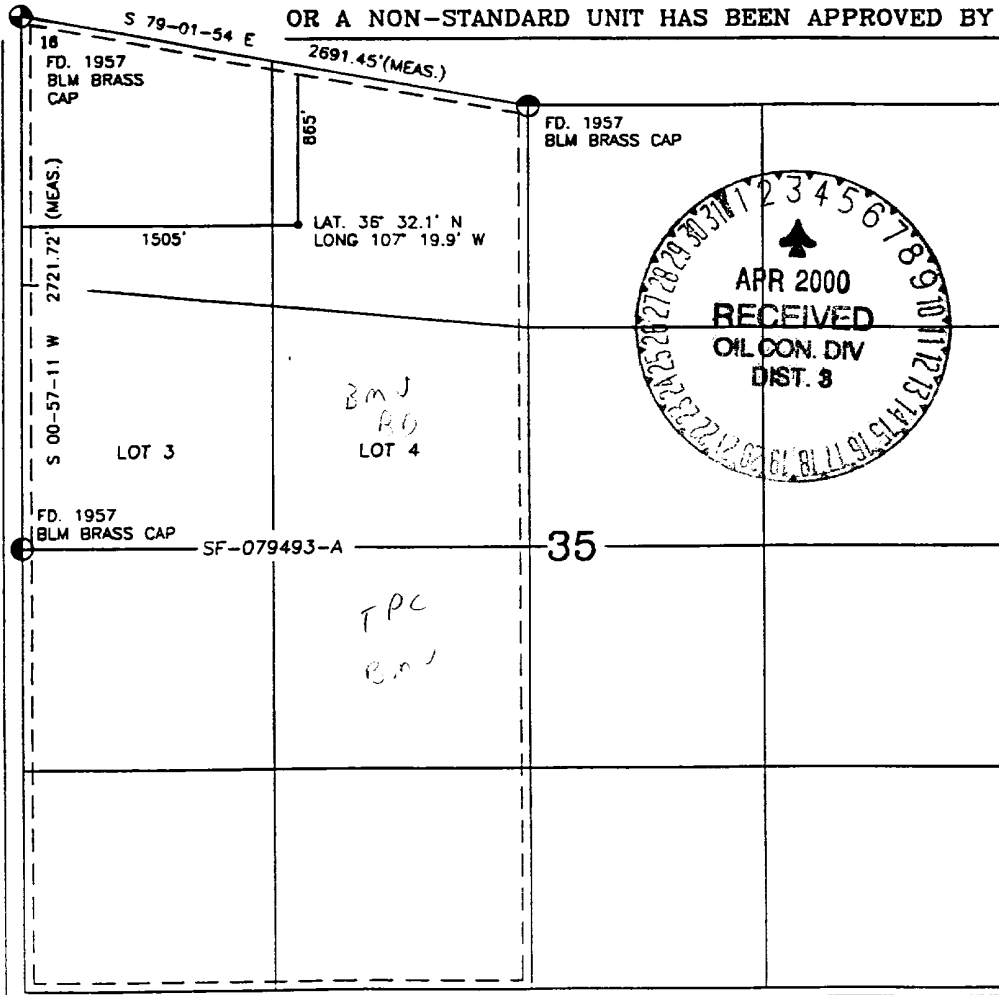
UL or lot no.	Section	Township	Range	Lot Idn	Feet from the	North/South line	Feet from the	East/West line	County
C	35	27-N	5-W		865	NORTH	1505	WEST	RIO ARRI

¹¹ Bottom Hole Location If Different From Surface

UL or lot no.	Section	Township	Range	Lot Idn	Feet from the	North/South line	Feet from the	East/West line	County

Dedicated Acres 156 W/316.94	Joint or Infill	Consolidation Code 160 acres for density purposes for the PC 320 acres for revenue purposes for the PC	Order No.
------------------------------------	-----------------	--	-----------

NO ALLOWABLE WILL BE ASSIGNED TO THIS COMPLETION UNTIL ALL INTERESTS HAVE BEEN CONSOLIDATED OR A NON-STANDARD UNIT HAS BEEN APPROVED BY THE DIVISION



¹⁷ OPERATOR CERTIFICATION

I hereby certify that the information contained herein is true and complete to the best of my knowledge and belief.

Signature
Peggy Cole
Printed Name
Regulatory Administrator
Title
Date
12-6-99

¹⁸ SURVEYOR CERTIFICATION

I hereby certify that the well location shown on this plat was plotted from field notes of actual surveys made by me or under my supervision, and that the same is true and correct to the best of my belief.

ROY A. RUSH
NEW MEXICO
8894
PROFESSIONAL LAND SURVEYOR
8894
Certificate Number

OPERATIONS PLAN

Well Name: San Juan 27-5 Unit #161R
Location: 865' FNL, 1505' FWL, Section 35, T-27-N, R-5-W
Rio Arriba County, New Mexico
Latitude 36° 32.1, Longitude 107° 19.9
Formation: Tapacito Pictured Cliffs
Elevation: 6602' GL

Formation:	Top	Bottom	Contents
Surface	San Jose	2731'	
Ojo Alamo	2731'	2908'	aquifer
Kirtland	2908'	2947'	gas
Fruitland	2947'	3366'	gas
Pictured Cliffs	3366'		gas
Total Depth	3566'		

Logging Program: cased hole - CCL-GR TD to surface

Coring Program: None

Mud Program:

Interval	Type	Weight	Vis.	Fluid Loss
0- 200'	Spud	8.4-9.0	40-50	no control
200-3566'	FW	8.4-9.0	32-45	no control

Casing Program (as listed, equivalent, or better):

Hole Size	Depth Interval	Csg. Size	Wt.	Grade
7 7/8"	0 - 200'	5 1/2"	15.5#	J-55
4 3/4"	0 - 3566'	2 7/8"	6.4#	J-55

Float Equipment: 5 1/2" surface casing - saw tooth guide shoe.
Centralizers will be run in accordance with Onshore Order #2.

2 7/8" production casing - float shoe on bottom. Three centralizers run every other joint above shoe. Seven centralizers run every 3rd joint to the base of the Ojo Alamo @ 2908'. Two turbolizing type centralizers - one below and one into the base of the Ojo Alamo @ 2908'. Standard centralizers thereafter every fourth joint up to the base of the surface pipe.

Wellhead Equipment: 7 7/8" x 2 7/8" 2000 psi screw on independent wellhead.

Cementing:

5 1/2" surface casing - cement with 88 sx Class "B" cement with 1/4# flocele/sx and 3% calcium chloride (104 cu.ft. of slurry, 200% excess to circulate to surface). WOC 8 hrs. Test casing to 600 psi for 30 minutes.

2 7/8" production casing - Lead w/182 sx Class "B" w/3% sodium metasilicate, 1/4 pps cellophane and 5 pps gilsonite. Tail w/50 sx 50/50 Class "B" Poz w/2% gel, 1/4 pps cellophane, 5 pps gilsonite and 2% calcium chloride (601 cu.ft. of slurry, 120% excess to circulate to surface). WOC 8 hrs. If cement does not circulate to surface, a CBL will be run during completion to determine TOC.

BOP and tests:

Surface to TD - 11" 2000 psi (minimum double gate BOP stack (Reference Figure #1 and #2). Prior to drilling out surface casing, test rams to 600 psi/30 min.

Completion - 6" 2000 psi (minimum) double gate BOP stack (Reference Figure #2). Prior to completion operations, test rams and casing to 2000 psi/15 min.

From surface to TD - choke manifold (Reference Figure #3).

Pipe rams will be actuated to least once each day and blind rams actuated once each trip to test proper functioning. An upper kelly cock valve with handle and drill string safety valves to fit each drill string will be maintained and available on the rig floor.

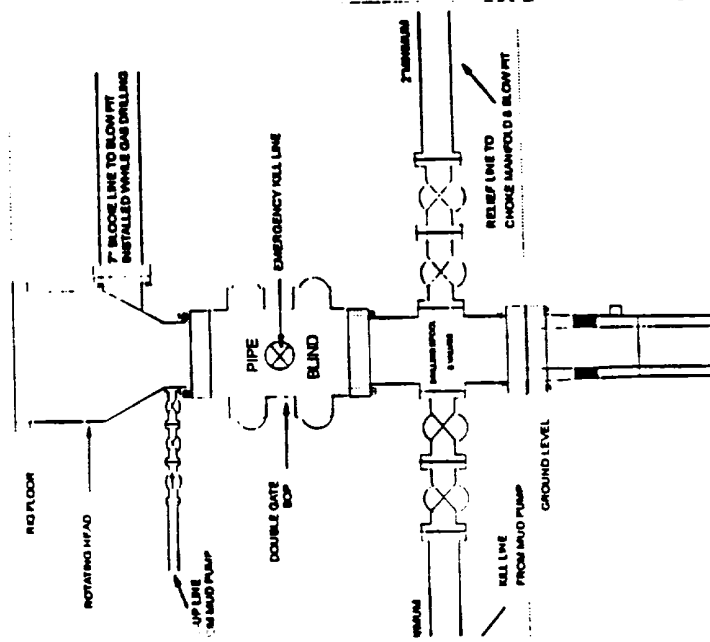
Additional information:

- * The Pictured Cliffs formation will be completed.
- * Anticipated pore pressure for the Pictured Cliffs is 600 psi.
- * This gas is dedicated.
- * The northwest quarter of section 35 is dedicated to the Pictured Cliffs.

Adrian C. White
Drilling Engineer

Dec 6 '99
Date

BOP Configuration 2M psi System

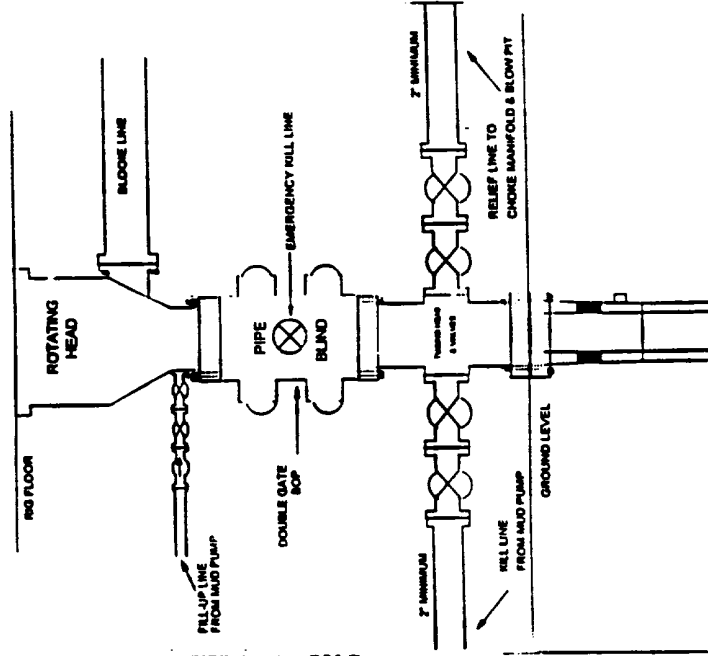


1" Bore, 2000psi minimum working pressure double gate BOP to be equipped with blind and pipe rams. A Schaeffer Type 60 or equivalent rotating head to be installed on the top of the BOP. All equipment is 2000psi working pressure or greater.

FIGURE #1

BURLINGTON RESOURCES

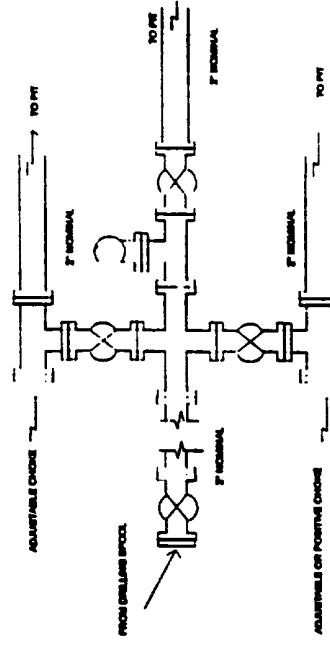
BOP Configuration 2M psi System



Minimum BOP installation for Completion operations. 7 1/16" Bore (16" Nominal). 2,000 psi minimum working pressure double gate BOP to be equipped with blind and pipe rams.

FIGURE #2

Choke Manifold Configuration 2M System



Minimum choke manifold installation from surface to Total Depth. 2" minimum, 2000psi working pressure equipment with two chokes.

Figure #3

NE/NW SECTION 35, T-27-N, R-5-W