

UNITED STATES
DEPARTMENT OF THE INTERIOR
BUREAU OF LAND MANAGEMENT

APPLICATION FOR PERMIT TO DRILL, DEEPEN, OR PLUG BACK

200 APR -7 PM 1:50

1a. Type of Work DRILL	5. Lease Number SF-080668 Unit Reporting Number 891001054A 6. If Indian, All. or Tribe
1b. Type of Well GAS	7. Unit Agreement Name San Juan 27-4 Unit
2. Operator BURLINGTON RESOURCES Oil & Gas Company	8. Farm or Lease Name San Juan 27-4 Unit
3. Address & Phone No. of Operator PO Box 4289, Farmington, NM 87499 (505) 326-9700	9. Well Number 134B
4. Location of Well 395' FSL, 870' FWL Latitude 36° 34.9, Longitude 107° 15.7	10. Field, Pool, Wildcat Blanco Mesaverde 11. Sec., Twn, Rge, Mer. (NMPM) 11 Sec. 9, T-27-N, R-4-W API # 30-039-26431
14. Distance in Miles from Nearest Town 12 miles from Gobernador	12. County Rio Arriba
15. Distance from Proposed Location to Nearest Property or Lease Line 395'	13. State NM
16. Acres in Lease	17. Acres Assigned to Well 320 W/2
18. Distance from Proposed Location to Nearest Well, Drig, Compl, or Applied for on this Lease 900'	20. Rotary or Cable Tools Rotary
19. Proposed Depth 6131'- <i>This action is subject to technical and procedural review pursuant to 43 CFR 3165.3 and appeal pursuant to 43 CFR 3165.4.</i>	22. Approx. Date Work will Start
21. Elevations (DF, FT, GR, Etc.) 6704' GR	DRILLING OPERATIONS AUTHORIZED ARE SUBJECT TO COMPLIANCE WITH ATTACHED "GENERAL REQUIREMENTS"
23. Proposed Casing and Cementing Program See Operations Plan attached	
24. Authorized by: <u>Peggy Cole</u> Regulatory/Compliance Supervisor	<u>2-28-00</u> Date

PERMIT NO. _____

APPROVAL DATE _____

APPROVED BY /s/ Jim Lovato

TITLE _____

DATE AUG 18 2000

Archaeological Report to be submitted

Threatened and Endangered Species Report to be submitted

NOTE: This format is issued in lieu of U.S. BLM Form 3160-3

Title 18 U.S.C. Section 1001, makes it a crime for any person knowingly and willfully to make to any department or agency of the United States any false, fictitious or fraudulent statements or presentations as to any matter within its jurisdiction.

NMOCD

District I
PO Box 1980, Hobbs, NM 88241-1980

District II
PO Drawer DD, Artesia, NM 88211-0719

District III
1000 Rio Brazos Rd., Aztec, NM 87410

District IV
PO Box 2088, Santa Fe, NM 87504-2088

State of New Mexico
Energy, Minerals & Natural Resources Department

OIL CONSERVATION DIVISION

PO Box 2088
Santa Fe, NM 87504-2088

Form C-102
Revised February 21, 1994
Instructions on back
Submit to Appropriate District Office
State Lease - 4 Copies
Fee Lease - 3 Copies

☐ AMENDED REPORT

OIL CONSERVATION, NM

WELL LOCATION AND ACREAGE DEDICATION PLAT

*API Number 30-039-26431		*Pool Code 72319 -	*Pool Name Blanco Mesaverde -
*Property Code 7452	*Property Name SAN JUAN 27-4 UNIT		*Well Number 134B
*GRID No. 14538	*Operator Name BURLINGTON RESOURCES OIL & GAS COMPANY		*Elevation 6704 -

10 Surface Location

UL or lot no.	Section	Township	Range	Lot Idn	Feet from the	North/South line	Feet from the	East/West line	County
M	9	27N	4W		395	SOUTH	870	WEST	RIO ARriba

11 Bottom Hole Location If Different From Surface

UL or lot no.	Section	Township	Range	Lot Idn	Feet from the	North/South line	Feet from the	East/West line	County

12 Dedicated Acres MV-W/320	13 Joint or Infill	14 Consolidation Code	15 Order No.
--------------------------------	--------------------	-----------------------	--------------

NO ALLOWABLE WILL BE ASSIGNED TO THIS COMPLETION UNTIL ALL INTERESTS HAVE BEEN CONSOLIDATED OR A NON-STANDARD UNIT HAS BEEN APPROVED BY THE DIVISION

<div>16</div> <div>5274.06'</div> <div>5280.00'</div> <div>5264.16'</div> <div>870'</div> <div>134B</div> <div>395'</div> <div>NMSF-080668</div> <div>9</div> <div>134B</div> <div>870'</div> <div>395'</div>	<div>17 OPERATOR CERTIFICATION</div> <p>I hereby certify that the information contained herein is true and complete to the best of my knowledge and belief</p> <div> Signature Peggy Cole Printed Name Regulatory Administrator Title 2-28-00 Date</div>
	<div>18 SURVEYOR CERTIFICATION</div> <p>I hereby certify that the well location shown on this plat was plotted from field notes of actual surveys made by me or under my supervision, and that the same is true and correct to the best of my belief.</p> <div>OCTOBER 8, 1999 Date of Survey Signature and Seal of Professional Surveyor Certificate Number 6857</div>

BURLINGTON RESOURCES OIL & GAS COMPANY SAN JUAN 27-4 UNIT #134B

395' FSL & 870' FWL, SECTION 9, T27N, R4W, N.M.P.M.

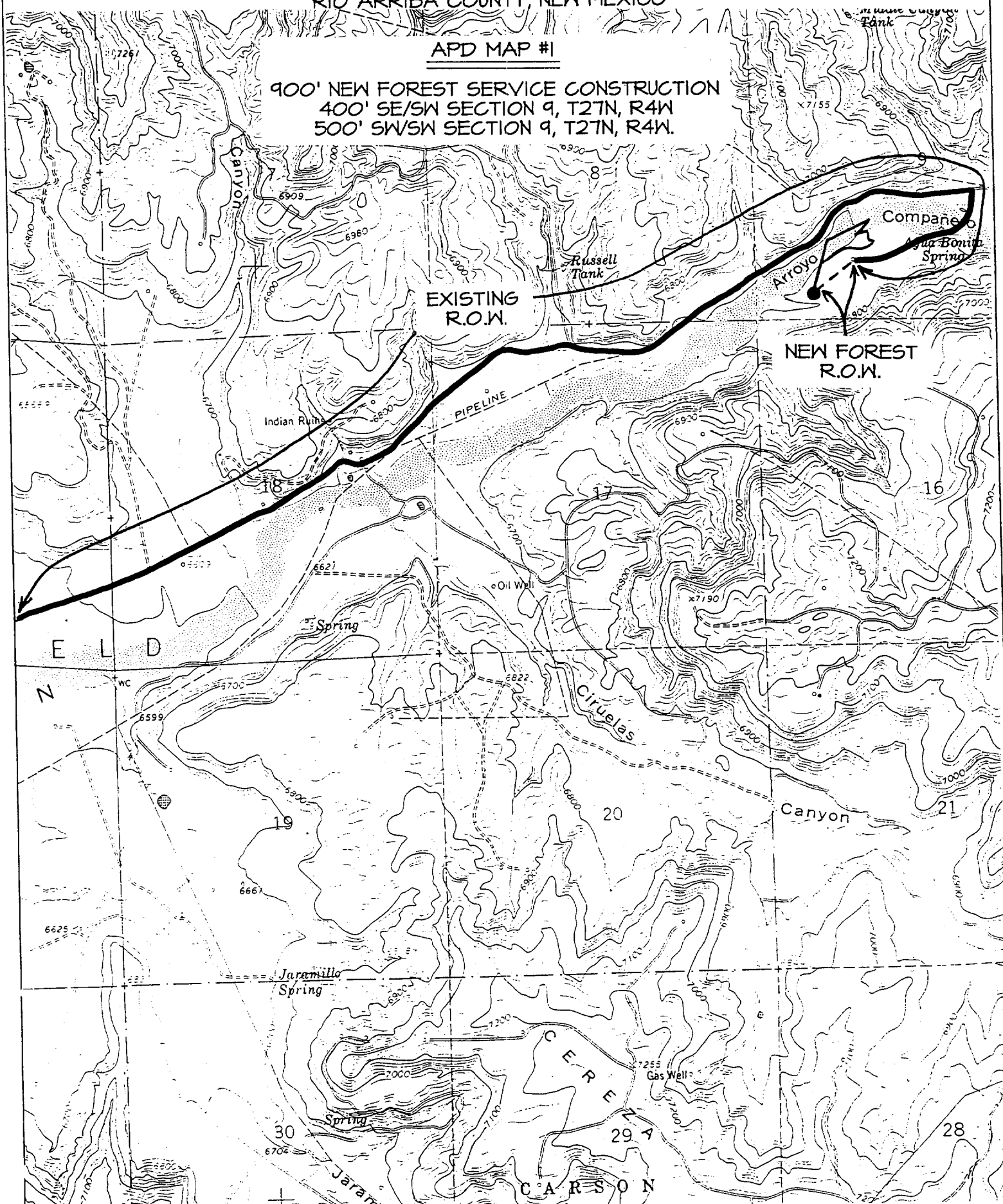
RIO ARriba COUNTY, NEW MEXICO

APD MAP #1

900' NEW FOREST SERVICE CONSTRUCTION

400' SE/SW SECTION 9, T27N, R4W

500' SW/SW SECTION 9, T27N, R4W.



OPERATIONS PLAN

Well Name: San Juan 27-4 Unit #134B
Surface Location: 395' FSL, 870' FWL, Section 9, T-27-N, R-4-W
Rio Arriba County, New Mexico
Latitude 36° 34.9, Longitude 107° 15.7
Formation: Blanco Mesa Verde
Elevation: 6704' GL

<u>Formation Tops:</u>	<u>Top</u>	<u>Bottom</u>	<u>Contents</u>
Surface	San Jose	2971'	aquifer
Ojo Alamo	2971'	3151'	aquifer
Kirtland	3151'	3231'	gas
Intermediate TD	3210'		
Fruitland	3231'	3538'	gas
Pictured Cliffs	3538'	3670'	gas
Lewis	3670'	4126'	gas
Mesa Verde	4126'	4554'	gas
Chacra	4554'	5321'	gas
Massive Cliff House	5321'	5418'	gas
Menefee	5418'	5731'	gas
Point Lookout	5731'		gas
Total Depth	6131'		

Logging Program:

Cased hole Gamma Ray, Cement bond - surface to TD
Mud Logs/Coring/DST - none

Mud Program:

<u>Interval- MD</u>	<u>Type</u>	<u>Weight</u>	<u>Vis.</u>	<u>Fluid Loss</u>
0- 200'	Spud	8.4-9.0	40-50	no control
200- 3210'	LSND	8.4-9.0	30-60	no control
3210- 6131'	Air/Mist	n/a	n/a	n/a

Pit levels will be visually monitored to detect gain or loss of fluid control.

Casing Program (as listed, the equivalent, or better):

<u>Hole Size</u>	<u>Measured Depth</u>	<u>Csg Size</u>	<u>Weight</u>	<u>Grade</u>
12 1/4"	0' - 200'	9 5/8"	32.3#	H-40
8 3/4"	0' - 3210'	7"	20.0#	J-55
6 1/4"	3110' - 6131'	4 1/2"	10.5#	J-55

Tubing Program: 0' - 6131' 2 3/8" 4.7# J-55

BOP Specifications, Wellhead and Tests:

Surface to Intermediate TD -

11" 2000 psi minimum double gate BOP stack (Reference Figure #1).
After nipple-up prior to drilling out surface casing, rams and casing will be tested to 600 psi for 30 minutes.

Intermediate TD to Total Depth -

11" 2000 psi minimum double gate BOP stack (Reference Figure #1).
After nipple-up prior to drilling out intermediate casing, rams and casing will be tested to 1500 psi for 30 minutes.

Surface to Total Depth -

2" nominal, 2000 psi minimum choke manifold (Reference Figure #3).

Completion Operations -

7 1/16" 2000 psi double gate BOP stack (Reference Figure #2).
After nipple-up prior to completion, pipe rams, casing and liner top will be tested to 2000 psi for 15 minutes.

Wellhead -

9 5/8" x 7" x 2 3/8" x 2000 psi tree assembly.

General -

- Pipe rams will be actuated once each day and blind rams will be actuated once each trip to test proper functioning.
- An upper kelly cock valve with handle available and drill string valves to fit each drill string will be available on the rig floors at all times.
- BOP pit level drill will be conducted weekly for each drill crew.
- All BOP tests & drills will be recorded in daily drilling reports.
- Blind and pipe rams will be equipped with extension hand wheels.

Cementing:

9 5/8" surface casing - cement with 159 sx Class "B" cement with 1/4# flocele/sx and 3% calcium chloride (188 cu.ft. of slurry, 200% excess to circulate to surface). WOC 8 hrs. Test casing to 600 psi for 30 minutes.

Saw tooth guide shoe on bottom. Bowspring centralizers will be run in accordance with Onshore Order #2.

7" intermediate casing -

Lead w/279 sx Class "B" w/3% sodium metasilicate, 5# gilsonite/sx and 0.5# flocele/sx. Tail w/90 sx 50/50 Class "B" Poz w/6% gel, 2% calcium chloride, 5# gilsonite/sx and 0.25# flocele/sx (966 cu.ft. of slurry, 100% excess to circulate to surface.) WOC minimum of 8 hours before drilling out intermediate casing. If cement does not circulate to surface, a CBL will be run to determine TOC. Test casing to 1500 psi for 30 minutes.

Cement nose guide shoe on bottom with float collar spaced on top of shoe joint. Bowspring centralizers spaced every other joint off bottom, to the base of the Ojo Alamo at 3151'. Two turbolating centralizers at the base of the Ojo Alamo at 3151'. Bowspring centralizers spaced every fourth joint from the base of the Ojo Alamo to the base of the surface casing.

4 1/2" Production Liner -

Cement to circulate liner top. Pump 342 sx 50/50 Class "B" Poz w/1/4# flocele/sx, 2% gel, 0.1% retardant, 5# gilsonite/sx and 0.4% fluid loss additive (434 cu.ft., 40% excess to circulate liner top). WOC a minimum of 18 hrs prior to completing.

Cement nose guide shoe on bottom with float collar spaced on top of shoe joint. The liner hanger will have a rubber packoff.

- If hole conditions permit, an adequate water spacer will be pumped ahead of each cement job to prevent cement/ mud contamination or cement hydration.