

UNITED STATES  
DEPARTMENT OF THE INTERIOR  
BUREAU OF LAND MANAGEMENT

APPLICATION FOR PERMIT TO DRILL, DEEPEN, OR PLUG BACK

1a. Type of Work DRILL ✓	5. Lease Number SF-079391 ✓ Unit Reporting Number 891000950B If Indian, All. or Tribe
1b. Type of Well GAS ✓	Unit Agreement Name San Juan 27-5 Unit
2. Operator <b>BURLINGTON RESOURCES</b> Oil & Gas Company	8. Farm or Lease Name San Juan 27-5 Unit
3. Address & Phone No. of Operator PO Box 4289, Farmington, NM 87499 (505) 326-9700	9. Well Number 150R
4. Location of Well 1745' FNL, 1180' FWL Latitude 36° 35.5, Longitude 107° 23.2	10. Field, Pool, Wildcat Tapacito Pictured Cliffs 11. Sec., Twn, Rge, Mer. (NMPM) E Sec. 8, T-27-N, R-5-W API # 30-039-26453
14. Distance in Miles from Nearest Town 6 miles from Gobernador	12. County Rio Arriba
15. Distance from Proposed Location to Nearest Property or Lease Line 1180'	13. State NM
16. Acres in Lease	17. Acres Assigned to Well 160 ✓
18. Distance from Proposed Location to Nearest Well, Drig, Compl, or Applied for on this Lease 1000'	20. Rotary or Cable Tools Rotary
19. Proposed Depth 3600' ✓ This action is subject to technical and procedural review pursuant to 43 CFR 3165.3 and appeal pursuant to 43 CFR 3165.4.	22. Approx. Date Work will Start 1-17-00
21. Elevations (DF, FT, GR, Etc.) 6615' GR	DRILLING OPERATIONS AUTHORIZED ARE SUBJECT TO COMPLIANCE WITH ATTACHED "GENERAL REQUIREMENTS"
23. Proposed Casing and Cementing Program See Operations Plan attached	
24. Authorized by: <u>[Signature]</u> Regulatory/Compliance Administrator	Date

PERMIT NO. \_\_\_\_\_

APPROVAL DATE \_\_\_\_\_

APPROVED BY /s/ Wayne Townsend

TITLE \_\_\_\_\_

DATE MAY 19 2000

Archaeological Report to be submitted

Threatened and Endangered Species Report to be submitted

NOTE: This format is issued in lieu of U.S. BLM Form 3160-3

Title 18 U.S.C. Section 1001, makes it a crime for any person knowingly and willfully to make to any department or agency of the United States any false, fictitious or fraudulent statements or presentations as to any matter within its jurisdiction.

[Signature]  
NMOC

District I  
PO Box 1980, Hobbs, NM 88241-1980

State of New Mexico  
Energy, Minerals & Natural Resources Department

Form C-102  
Revised February 21, 1994

District II  
PO Drawer DD, Artesia, NM 88211-0719

OIL CONSERVATION DIVISION  
PO Box 2088  
Santa Fe, NM 87504-2088

Instructions on back  
Submit to Appropriate District Office  
State Lease - 4 Copies  
Fee Lease - 3 Copies

District III  
1000 Rio Brazos Rd., Aztec, NM 87410

District IV  
PO Box 2088, Santa Fe, NM 87504-2088

27 ☐ AMENDED REPORT

WELL LOCATION AND ACREAGE DEDICATION PLAT

1 API Number 30-039-26453		2 Pool Code 85920		3 Pool Name Tapacito Pictured Cliffs		
4 Property Code 7454		5 Property Name SAN JUAN 27-5 UNIT			6 Well Number 150R	
7 OGRID No. 14538		8 Operator Name BURLINGTON RESOURCES OIL & GAS COMPANY			9 Elevation 6615' -	

10 Surface Location

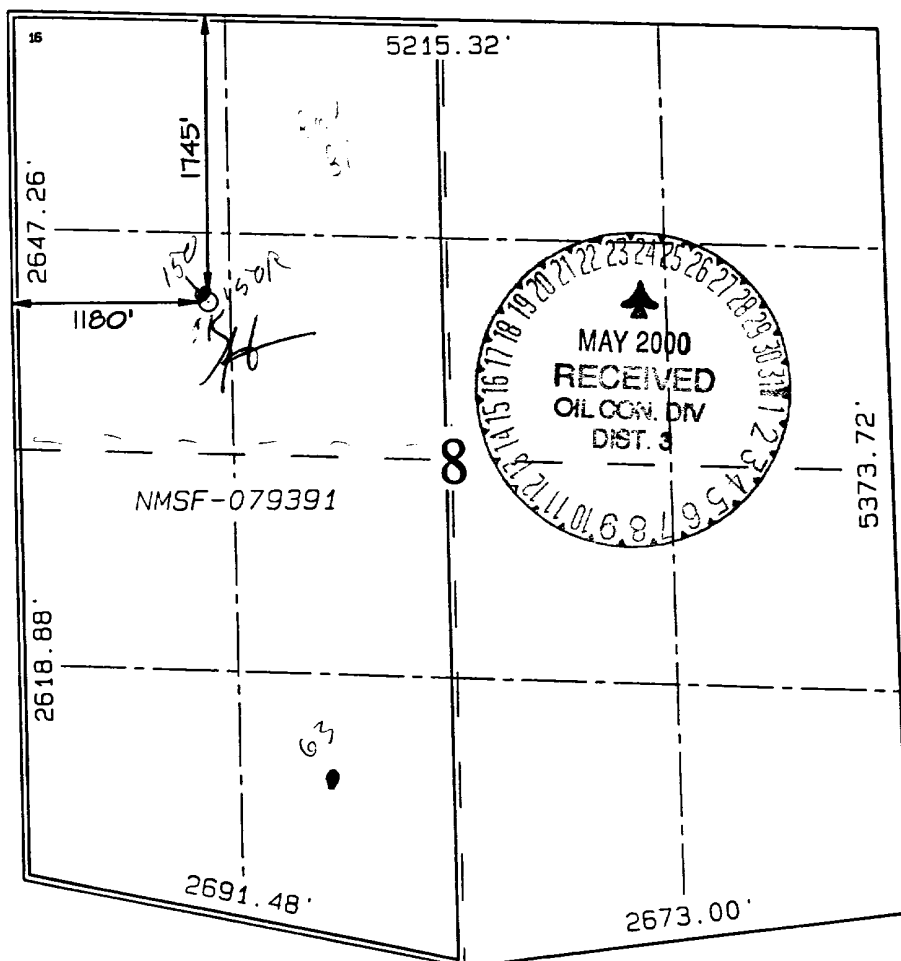
UL or lot no.	Section	Township	Range	Lot Idn	Feet from the	North/South line	Feet from the	East/West line	County
E	8	27N	5W		1745	NORTH	1180	WEST	RIO ARriba

11 Bottom Hole Location If Different From Surface

UL or lot no.	Section	Township	Range	Lot Idn	Feet from the	North/South line	Feet from the	East/West line	County

12 Dedicated Acres 160 NW/4		13 Joint or Infill		14 Consolidation Code		15 Order No. 160 acres for density purposes for the PC 320 acres for Revenue purposed for the PC	
--------------------------------	--	--------------------	--	-----------------------	--	--	--

NO ALLOWABLE WILL BE ASSIGNED TO THIS COMPLETION UNTIL ALL INTERESTS HAVE BEEN CONSOLIDATED  
OR A NON-STANDARD UNIT HAS BEEN APPROVED BY THE DIVISION



17 OPERATOR CERTIFICATION

I hereby certify that the information contained herein is true and complete to the best of my knowledge and belief

*Peggy Cole*  
Signature  
Peggy Cole  
Printed Name  
Regulatory Administrator  
Title  
1-17-00  
Date

18 SURVEYOR CERTIFICATION

I hereby certify that the well location shown on this plat was plotted from field notes of actual surveys made by me or under my supervision and that the same is true and correct to the best of my belief.

DECEMBER 17, 1999  
Date of Survey  
Signature and Seal of Professional Surveyor  
*NEALE C. EDWARDS*  
NEW MEXICO  
6857  
Certificate 6857

## OPERATIONS PLAN

**Well Name:** San Juan 27-5 Unit #150R  
**Location:** 1745' FNL, 1180' FWL, Section 8, T-27-N, R-5-W  
Rio Arriba County, New Mexico  
Latitude 36° 35.5, Longitude 107° 23.2  
**Formation:** Tapacito Pictured Cliffs  
**Elevation:** 6615' GL

Formation:	Top	Bottom	Contents
Surface	San Jose	2714'	
Ojo Alamo	2714'	2925'	aquifer
Kirtland	2925'	2999'	gas
Fruitland	2999'	3400'	gas
Pictured Cliffs	3400'		gas
Total Depth	3600'		

**Logging Program:** Surface to TD - GR-CCL

**Coring Program:** None

**Mud Program:**

Interval	Type	Weight	Vis.	Fluid Loss
0- 120'	Spud	8.4-9.0	40-50	no control
120-3600'	FW	8.4-9.0	32-45	no control

**Casing Program (as listed, equivalent, or better):**

Hole Size	Depth Interval	Csg. Size	Wt.	Grade
7 7/8"	0 - 120'	5 1/2"	15.5#	J-55
4 3/4"	0 - 3600'	2 7/8"	6.4#	J-55

**Float Equipment:** 5 1/2" surface casing - saw tooth guide shoe.  
Centralizers will be run in accordance with Onshore Order #2.

2 7/8" production casing - float shoe on bottom. Three centralizers run every other joint above shoe. Seven centralizers run every 3rd joint to the base of the Ojo Alamo @ 2714'. Two turbolizing type centralizers - one below and one into the base of the Ojo Alamo @ 2714'. Standard centralizers thereafter every fourth joint up to the base of the surface pipe.

**Wellhead Equipment:** 7 7/8" x 2 7/8" 2000 psi screw on independent wellhead.

**Cementing:**

5 1/2" surface casing - cement with 53 sx Class "B" cement with 1/4# flocele/sx and 3% calcium chloride (62 cu.ft. of slurry, 200% excess to circulate to surface). WOC 8 hrs. Test casing to 600 psi for 30 minutes.

2 7/8" production casing - Lead w/171 sx Class "B" w/3% sodium metasilicate, 1/2 pps Flocele and 5 pps gilsonite. Tail w/50 sx 50/50 Class "B" Poz w/2% gel, 1/2 pps Flocele, 5 pps gilsonite and 2% calcium chloride (562 cu.ft. of slurry, 100% excess to circulate to surface). WOC 8 hrs. If cement does not circulate to surface, a CBL will be run during completion to determine TOC.

**BOP and tests:**

Surface to TD - 11" 2000 psi (minimum double gate BOP stack (Reference Figure #1 and #2). Prior to drilling out surface casing, test rams to 600 psi/30 min.

Completion - 6" 2000 psi (minimum) double gate BOP stack (Reference Figure #2). Prior to completion operations, test rams and casing to 2000 psi/15 min.

From surface to TD - choke manifold (Reference Figure #3).

Pipe rams will be actuated to least once each day and blind rams actuated once each trip to test proper functioning. An upper kelly cock valve with handle and drill string safety valves to fit each drill string will be maintained and available on the rig floor.

**Additional information:**

- \* The Pictured Cliffs formation will be completed.
- \* Anticipated pore pressure for the Pictured Cliffs is 600 psi.
- \* This gas is dedicated.
- \* The northwest quarter of section 8 is dedicated to the Pictured Cliffs.

Steve Campbell  
Drilling Engineer

1/18/2000  
Date

BURLINGTON RESOURCES OIL & GAS COMPANY SAN JUAN 27-5 UNIT #150R

1745' FNL & 1180' FWL, SECTION 8, T27N, R5W, N.M.P.M.

RIO ARriba COUNTY, NEW MEXICO

APD MAP #1

NO NEW CONSTRUCTION  
SWNW SECTION 8, T27N, R5W

