

UNITED STATES  
DEPARTMENT OF THE INTERIOR  
BUREAU OF LAND MANAGEMENT

APPLICATION FOR PERMIT TO DRILL, DEEPEN, OR PLUG BACK

1a. Type of Work  
DRILL -

1b. Type of Well  
GAS -

2. Operator  
**BURLINGTON RESOURCES** Oil & Gas Company

3. Address & Phone No. of Operator  
PO Box 4289, Farmington, NM 87401  
(505) 326-9700

4. Location of Well  
740' FNL, 1005' FWL  
Latitude 36° 33.0, Longitude 107° 18.5

5. Lease Number  
SF-079493  
Unit Reporting Number  
**891000950B**

6. If Indian, All. or Tribe

7. Unit Agreement Name  
San Juan 27-5 Unit

8. Farm or Lease Name  
San Juan 27-5 Unit

9. Well Number  
184R -

10. Field, Pool, Wildcat  
Tapacito Pict. Cliffs -

11. Sec., Twn, Rge, Mer. (NMPM)  
Sec. 25, T-27-N, R-5-W  
API # 30-039-26526

12. County  
Rio Arriba

13. State  
NM

14. Distance in Miles from Nearest Town  
15 miles from Gobernador

15. Distance from Proposed Location to Nearest Property or Lease Line  
740'

16. Acres in Lease

17. Acres Assigned to Well  
320 W/2

18. Distance from Proposed Location to Nearest Well, Drlg, Compl, or Applied for on this Lease  
75'

19. Proposed Depth  
3582' -

20. Rotary or Cable Tools  
Rotary

21. Elevations (DF, FT, GR, Etc.)  
6595' GR

22. Approx. Date Work will Start

23. Proposed Casing and Cementing Program  
See Operations Plan attached

24. Authorized by: *Jimmy Cole*  
Regulatory/Compliance Supervisor

Date  
**10-6-00**

DRILLING OPERATIONS AUTHORIZED ARE  
SUBJECT TO COMPLIANCE WITH ATTACHED  
"GENERAL REQUIREMENTS"

PERMIT NO. \_\_\_\_\_ APPROVAL DATE \_\_\_\_\_

APPROVED BY /s/ Jim Lovato TITLE \_\_\_\_\_ DATE DEC - 4

Archaeological Report to be submitted

Threatened and Endangered Species Report to be submitted

NOTE: This format is issued in lieu of U.S. BLM Form 3160-3

Title 18 U.S.C. Section 1001, makes it a crime for any person knowingly and willfully to make to any department or agency of the United States any false, fictitious or fraudulent statements or presentations as to any matter within its jurisdiction.

NMOC

District I  
PO Box 1980, Hobbs, NM 88241-1980

District II  
PO Drawer DD, Artesia, NM 88211-0719

District III  
1000 Rio Brazos Rd., Aztec, NM 87410

District IV  
PO Box 2088, Santa Fe, NM 87504-2088

State of New Mexico  
Energy, Minerals & Natural Resources Department

# OIL CONSERVATION DIVISION

PO Box 2088  
Santa Fe, NM 87504-2088

Form C-102  
Revised February 21, 1994

Instructions on back  
Submit to Appropriate District Office  
State Lease - 4 Copies  
Fee Lease - 3 Copies

AMENDED REPORT

## WELL LOCATION AND ACREAGE DEDICATION PLAT

API Number 30-039-26526		Pool Code 85920 -		Pool Name Tapacito Pictured Cliffs	
Property Code 7454		Property Name SAN JUAN 27-5 UNIT			Well Number 184R
GRID No. 14538		Operator Name BURLINGTON RESOURCES OIL & GAS COMPANY			Elevation 6595'

10 Surface Location									County
UL or lot no.	Section	Township	Range	Lot Idn	Feet from the	North/South line	Feet from the	East/West line	
D	25	27N	5W		740	NORTH	1005	WEST	RIO ARriba

11 Bottom Hole Location If Different From Surface									County
UL or lot no.	Section	Township	Range	Lot Idn	Feet from the	North/South line	Feet from the	East/West line	

Dedicated Acres W/320	Joint or Infill	Consolidation Code	Order No. 160 acres for density purposes for the Pictured Clif 320 acres for Revenue purposes for the Pictured Clif
--------------------------	-----------------	--------------------	---

NO ALLOWABLE WILL BE ASSIGNED TO THIS COMPLETION UNTIL ALL INTERESTS HAVE BEEN CONSOLIDATED  
OR A NON-STANDARD UNIT HAS BEEN APPROVED BY THE DIVISION

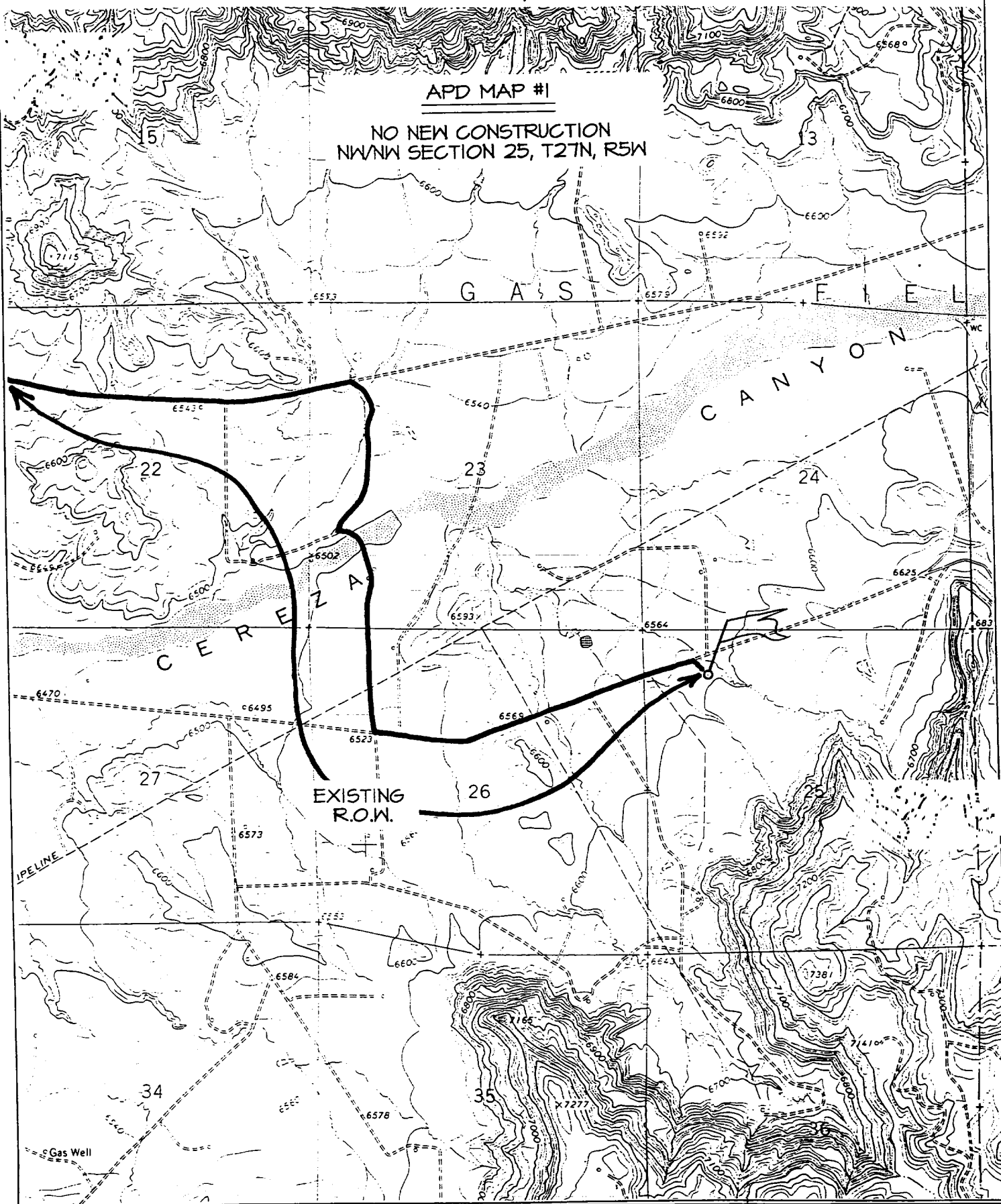
<div>16</div> <div>2638.68'</div> <div>740'</div> <div>1005'</div> <div>LAT: 36°33.0'N LONG: 107°18.9'W</div> <div>USA SF-079493</div> <div>25</div> <div>5340.06'</div> <div>2661.78'</div> <div>2584.56'</div>		<div>2638.68'</div> <div>DEC 2000 RECEIVED OIL CON. DIV DIST. 3</div> <div>5196.84'</div>		<div>17 OPERATOR CERTIFICATION</div> <div>I hereby certify that the information contained herein is true and complete to the best of my knowledge and belief.</div> <div>Peggy Cole</div> <div>Signature</div> <div>Peggy Cole</div> <div>Printed Name</div> <div>Regulatory Supervisor</div> <div>Title</div> <div>10-6-00</div> <div>Date</div> <div>18 SURVEYOR CERTIFICATION</div> <div>I hereby certify that the well location shown on this plat was plotted from field notes of actual surveys made or under my supervision and that the same is true and correct to the best of my belief.</div> <div>AUGUST 17, 2000</div> <div>Date of Survey</div> <div>Signature and Seal of Surveyor</div> <div>NEALE C. EDWARDS</div> <div>NEW MEXICO</div> <div>6857</div> <div>Certificate</div>
--	--	---	--	--

BURLINGTON RESOURCES OIL & GAS COMPANY SAN JUAN 27-5 UNIT #184R

740' FNL & 1005' FWL, SECTION 25, T27N, R5W, N.M.P.M.  
RIO ARriba COUNTY, NEW MEXICO

APD MAP #1

NO NEW CONSTRUCTION  
NWNW SECTION 25, T27N, R5W



## OPERATIONS PLAN

**Well Name:** San Juan 27-5 Unit #184R  
**Location:** 740' FNL, 1005' FWL, Section 25, T-27-N, R-5-W  
Rio Arriba County, New Mexico  
Latitude 36° 33.0, Longitude 107° 18.9  
**Formation:** Tapacito Pictured Cliffs  
**Elevation:** 6595' GL

<b>Formation:</b>	<b>Top</b>	<b>Bottom</b>	<b>Contents</b>
Surface	San Jose	2796'	.
Ojo Alamo	2796'	2997'	aquifer
Kirtland	2997'	3082'	gas
Fruitland	3082'	3382'	gas
Pictured Cliffs	3382'		gas
Total Depth	3582'		

**Logging Program:** Surface to TD - CBL-CCL-GR

**Coring Program:** None

**Mud Program:**

<u>Interval</u>	<u>Type</u>	<u>Weight</u>	<u>Vis.</u>	<u>Fluid Loss</u>
0- 200'	Spud	8.4-9.0	40-50	no control
200-3582'	FW	8.4-9.0	32-45	no control

**Casing Program (as listed, equivalent, or better):**

<u>Hole Size</u>	<u>Depth Interval</u>	<u>Csq. Size</u>	<u>Wt.</u>	<u>Grade</u>
8 3/4"	0 - 200'	7"	20.0#	J-55
6 1/4"	0 - 3582'	2 7/8"	6.5#	J-55

**Float Equipment:** 7" surface casing - saw tooth guide shoe.  
Centralizers will be run in accordance with Onshore Order #2.

2-7/8" production casing - float shoe on bottom. Three centralizers run every other joint above shoe. Seven centralizers run every 3rd joint to the base of the Ojo Alamo @ 2997'. Two turbolizing type centralizers - one below and one into the base of the Ojo Alamo @ 2997'. Standard centralizers thereafter every fourth joint up to the base of the surface pipe.

**Wellhead Equipment:** 7" x 2 7/8" 2000 psi screw on independent wellhead.

**Cementing:**

7" surface casing - Cement with 76 sx Class "B" cement with 1/4# flocele/sx and 3% calcium chloride (90 cu.ft. of slurry, 200% excess to circulate to surface). WOC 8 hrs. Test casing to 600 psi for 30 minutes.

**San Juan 27-5 Unit #184R**

2 7/8" production casing - Lead w/372 sx Class "B" w/3% sodium metasilicate, 1/2 pps Flocele and 10 pps gilsonite. Tail w/90 sx 50/50 Class "B" Poz w/2% gel, 1/4 pps Flocele, 5 pps gilsonite and 2% calcium chloride (1204 cu.ft. of slurry, 100% excess to circulate to surface). WOC 8 hrs. If cement does not circulate to surface, a CBL will be run during completion to determine TOC.

**BOP and tests:**

Surface to TD - 11" 2000 psi (minimum double gate BOP stack (Reference Figure #1 and #2). Prior to drilling out surface casing, test rams to 600 psi/30 min.

Completion - 6" 2000 psi (minimum) double gate BOP stack (Reference Figure #2). Prior to completion operations, test rams and casing to 2000 psi/15 min.

From surface to TD - choke manifold (Reference Figure #3).

Pipe rams will be actuated to least once each day and blind rams actuated once each trip to test proper functioning. An upper kelly cock valve with handle and drill string safety valves to fit each drill string will be maintained and available on the rig floor.

**Additional information:**

- \* The Pictured Cliffs formation will be completed.
- \* Anticipated pore pressure for the Pictured Cliffs is 500 psi.
- \* This gas is dedicated.
- \* The west half of section 25 is dedicated to the Pictured Cliffs.

Eric J. Giles  
Drilling Engineer

10/16/00  
Date