

UNITED STATES
DEPARTMENT OF THE INTERIOR
BUREAU OF LAND MANAGEMENT

APPLICATION FOR PERMIT TO DRILL, DEEPEN, OR PLUG BACK

200 OCT 23 PM 2:27

1a. Type of Work
DRILL

5. Lease Number
SF-080669
Unit Reporting Number

1b. Type of Well
GAS

6. If Indian, All. or Tribe

2. Operator
BURLINGTON RESOURCES Oil & Gas Company

7. Unit Agreement Name
San Juan 27-4 Unit

3. Address & Phone No. of Operator
PO Box 4289, Farmington, NM 87499
(505) 326-9700

8. Farm or Lease Name
San Juan 27-4 Unit

9. Well Number
45C

4. Location of Well
2240' FSL, 350' FEL
Latitude 36° 33.5, Longitude 107° 17.0

10. Field, Pool, Wildcat
Blanco Mesaverde

11. Sec., Twn, Rge, Mer. (NMPM)
1 Sec. 19, T-27-N, R-4-W
API # 30-039-26529

14. Distance in Miles from Nearest Town
18 miles from Gobernador

12. County Rio Arriba 13. State NM

15. Distance from Proposed Location to Nearest Property or Lease Line
350'

16. Acres in Lease

17. Acres Assigned to Well
320 E/2

18. Distance from Proposed Location to Nearest Well, Drlg, Compl, or Applied for on this Lease
1200'

19. Proposed Depth
6350'

This action is subject to technical and procedural review pursuant to 43 CFR 3165.3 and appeal pursuant to 43 CFR 3165.4.

20. Rotary or Cable Tools
Rotary

21. Elevations (DF, FT, GR, Etc.)
6915' GR

22. Approx. Date Work will Start

23. Proposed Casing and Cementing Program
See Operations Plan attached

DRILLING OPERATIONS AUTHORIZED ARE
SUBJECT TO COMPLIANCE WITH ATTACHED
"GENERAL REQUIREMENTS"

24. Authorized by: Peggy Cale
Regulatory/Compliance Supervisor

9-25-00
Date

PERMIT NO. _____

APPROVAL DATE FEB - 2 2001

APPROVED BY /s/ Jim Lovato

TITLE _____

DATE _____

Archaeological Report to be submitted

Threatened and Endangered Species Report to be submitted

NOTE: This format is issued in lieu of U.S. BLM Form 3160-3

Title 18 U.S.C. Section 1001, makes it a crime for any person knowingly and willfully to make to any department or agency of the United States any false, fictitious or fraudulent statements or presentations as to any matter within its jurisdiction.

submitted in lieu of Form 3160-5

UNITED STATES
DEPARTMENT OF THE INTERIOR
BUREAU OF LAND MANAGEMENT

Sundry Notices and Reports on Wells

1. Type of Well
GAS

2. Name of Operator

**BURLINGTON
RESOURCES**

OIL & GAS COMPANY FEB 2001

3. Address & Phone No. of Operator

PO Box 4289, Farmington, NM 87499 (505) 326-8700

4. Location of Well, Footage, Sec., T, R, M

2240' FSL, 350' FEL, Sec. 19, T-27-N, R-4-W, NM PM

5. Lease Number

SF-080669

6. If Indian, All. or
Tribe Name

7. Unit Agreement Name

San Juan 27-4 Unit

8. Well Name & Number

San Juan 27-4 U #45C

9. API Well No.

30-039-

10. Field and Pool

Blanco Mesaverde

11. County and State

Rio Arriba Co, NM

12. CHECK APPROPRIATE BOX TO INDICATE NATURE OF NOTICE, REPORT, OTHER DATA

Type of Submission

☒ Notice of Intent

☐ Subsequent Report

☐ Final Abandonment

Type of Action

☐ Abandonment

☐ Recompletion

☐ Plugging Back

☐ Casing Repair

☒ Altering Casing

☐ Other -

☒ Change of Plans

☐ New Construction

☐ Non-Routine Fracturing

☐ Water Shut off

☐ Conversion to Injection

13. Describe Proposed or Completed Operations

It is intended to alter the casing depths and cement of the subject well.

Revisions:

Mud Program:

Interval	Type	Weight	Fluid Loss
200-4124'	LSND	8.4-9.0	No control
4124-6350'	Air/Mist	n/a	n/a

Casing Program:

Hole Size	Depth Interval	Casing Size	Weight	Grade
8 3/4"	0-4000'	7"	20.0#	J-55
8 3/4"	4000-4124'	7"	23.0#	J-55
6 1/4"	4024-6350'	4 1/2"	10.5#	J-55

Cementing Program:

7" intermediate casing - lead w/389 sx Class "B" cement with 3% sodium metasilicate, 10 pps Gilsonite, 0.5 pps Flocele. Tail with 90 sx Class "B" 50/50 poz w/2% gel, 2% calcium chloride, 5 pps Gilsonite, 0.25 pps Flocele, 5 pps Gilsonite, 0.1% antifoam (1241 cu.ft. of slurry, 125% excess to circulate to surface).

4 1/2" production liner - cement with 237 sx Class "B" 50/50 poz w/4% gel, 0.25 pps Flocele, 5 pps Gilsonite, 0.3% fluid loss, 0.35% dispersant, 0.1% antifoam (334 cu.ft., 50% excess to circulate liner).

14. I hereby certify that the foregoing is true and correct.

Signed Jim Lovato Title Regulatory Supervisor Date 11/1/00

(This space for Federal or State Office use)

APPROVED BY Jim Lovato Title _____ Date FEB - 2

CONDITION OF APPROVAL, if any:

District I
PO Box 1980, Hobbs, NM 88241-1980

State of New Mexico
Energy, Minerals & Natural Resources Department

Form C-102
Revised February 21, 1994

District II
PO Drawer DD, Artesia, NM 88211-0719

OIL CONSERVATION DIVISION

Submit to Appropriate District Office
State Lease - 4 Copies
Fee Lease - 3 Copies

District III
1000 Rio Brazos Rd., Aztec, NM 87410

PO Box 2088
Santa Fe, NM 87504-2088

AMENDED REPORT

District IV
PO Box 2088, Santa Fe, NM 87504-2088

WELL LOCATION AND ACREAGE DEDICATION PLAT

*API Number 30-039- 26529		*Pool Code 72319	*Pool Name Blanco Mesaverde
*Property Code 7452	*Property Name SAN JUAN 27-4 UNIT		*Well Number 45C
*OGRID No. 14538	*Operator Name BURLINGTON RESOURCES OIL & GAS COMPANY		*Elevation 6915'

10 Surface Location

UL or lot no.	Section	Township	Range	Lot Idn	Feet from the	North/South line	Feet from the	East/West line	County
I	19	27N	4W		2240	SOUTH	350	EAST	RIO ARriba

11 Bottom Hole Location If Different From Surface

UL or lot no.	Section	Township	Range	Lot Idn	Feet from the	North/South line	Feet from the	East/West line	County

12 Dedicated Acres E/320	13 Joint or Infill	14 Consolidation Code	15 Order No.
-----------------------------	--------------------	-----------------------	--------------

NO ALLOWABLE WILL BE ASSIGNED TO THIS COMPLETION UNTIL ALL INTERESTS HAVE BEEN CONSOLIDATED OR A NON-STANDARD UNIT HAS BEEN APPROVED BY THE DIVISION

16 1331.22'	1320.00'	2640.00'
LOT 1		
LOT 2		
LOT 3		
LOT 4		

5280.00'

2240'

350'

LAT: 36°33.5'N
LONG: 107°17.0'W

USA SF-080669

19

17 OPERATOR CERTIFICATION
I hereby certify that the information contained herein is true and complete to the best of my knowledge and belief.

Signature: Peggy Cole
Printed Name: Peggy Cole
Title: Regulatory Supervisor
Date: 9-25-00

18 SURVEYOR CERTIFICATION
I hereby certify that the well location shown on this plat was plotted from field notes of actual surveys made by me or under my supervision, and that the same is true and correct to the best of my belief.

JULY 11, 2000
Date of Survey

Signature and Seal: NEALE C. EDWARDS
6857

Certificate No. 6857

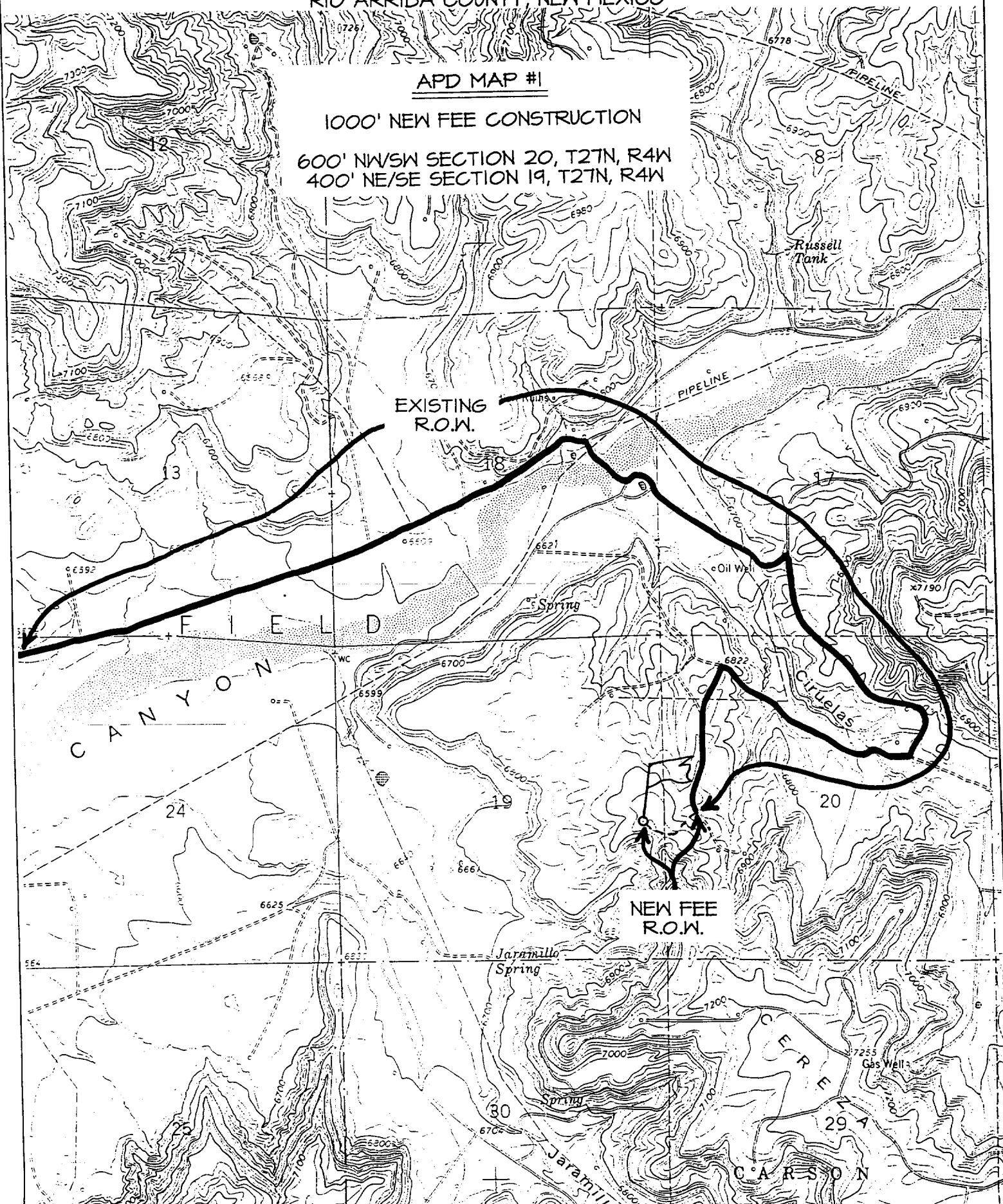
BURLINGTON RESOURCES OIL & GAS COMPANY SAN JUAN 27-4 UNIT #45C

2240' FSL & 350' FEL, SECTION 19, T27N, R4W, N.M.P.M.
RIO ARriba COUNTY, NEW MEXICO

APD MAP #1

1000' NEW FEE CONSTRUCTION

600' NW/SW SECTION 20, T27N, R4W
400' NE/SE SECTION 19, T27N, R4W



BOP Specifications, Wellhead and Tests:**Surface to Intermediate TD -**

11" 2000 psi minimum double gate BOP stack (Reference Figure #1). After nipple-up prior to drilling out surface casing, rams and casing will be tested to 600 psi for 30 minutes.

Intermediate TD to Total Depth -

11" 2000 psi minimum double gate BOP stack (Reference Figure #1). After nipple-up prior to drilling out intermediate casing, rams and casing will be tested to 1500 psi for 30 minutes.

Surface to Total Depth -

2" nominal, 2000 psi minimum choke manifold (Reference Figure #3).

Completion Operations -

7 1/16" 2000 psi double gate BOP stack (Reference Figure #2). After nipple-up prior to completion, pipe rams, casing and liner top will be tested to 2000 psi for 15 minutes.

Wellhead -

9 5/8" x 7" x 2 3/8" x 2000 psi tree assembly.

General -

- Pipe rams will be actuated once each day and blind rams will be actuated once each trip to test proper functioning.
- An upper kelly cock valve with handle available and drill string valves to fit each drill string will be available on the rig floors at all times.
- BOP pit level drill will be conducted weekly for each drill crew.
- All BOP tests & drills will be recorded in daily drilling reports.
- Blind and pipe rams will be equipped with extension hand wheels.

Cementing:

9 5/8" surface casing - cement with 159 sx Class "B" cement with 1/4# flocele/sx and 3% calcium chloride (188 cu.ft. of slurry, 200% excess to circulate to surface). WOC 8 hrs. Test casing to 600 psi for 30 minutes.

Saw tooth guide shoe on bottom. Bowspring centralizers will be run in accordance with Onshore Order #2.

7" intermediate casing -

Lead w/373 sx Class "B" w/3% sodium metasilicate, 10# gilsonite/sx and 0.5# flocele/sx. Tail w/90 sx 50/50 Class "B" Poz w/2% gel, 2% calcium chloride, 5# gilsonite/sx, 0.1% antifoam and 0.25# flocele/sx (1195 cu.ft. of slurry, 100% excess to circulate to surface.) WOC minimum of 8 hours before drilling out intermediate casing. If cement does not circulate to surface, a CBL will be run to determine TOC. Test casing to 1500 psi for 30 minutes.

7" intermediate casing alternative two stage: Stage collar at 3352'. First stage: cement with 148 sx Class "B" 50/50 poz w/2% gel, 5 pps Gilsonite, 2% calcium chloride, 0.5 pps Cellophane. Second stage: 348 sx Class "B" with 3% sodium metasilicate, 1/2 pps Cellophane, 10 pps Gilsonite (1195 cu.ft., 100% excess to circulate to surface).

OPERATIONS PLAN

Well Name: San Juan 27-4 Unit #45C
Location: 2240' FSL, 350' FEL, Section 19, T-27-N, R-4-W
Rio Arriba County, New Mexico
Latitude 36° 33.5, Longitude 107° 17.0
Formation: Blanco Mesa Verde
Elevation: 6915' GL

<u>Formation Tops:</u>	<u>Top</u>	<u>Bottom</u>	<u>Contents</u>
Surface	San Jose	3262'	
Ojo Alamo	3262'	3337'	aquifer
Kirtland	3337'	3452'	
Fruitland	3452'	3752'	gas
Pictured Cliffs	3752'	3874'	gas
Lewis	3874'	4307'	gas
Intermediate TD	3974'		
Huerfanito Bentonite	4307'	4748'	gas
Chacra	4748'	5466'	gas
Massive Cliff House	5466'	5617'	gas
Menefee	5617'	5950'	gas
Point Lookout	5950'		gas
Total Depth	6350'		

Logging Program:

Mud Logs/Coring/DST -

Mud logs - none

Coring - none

DST - none

Cased hole - Gamma Ray, Cement bond - surface to TD

Mud Program:

<u>Interval- MD</u>	<u>Type</u>	<u>Weight</u>	<u>Vis.</u>	<u>Fluid Loss</u>
0- 200'	Spud	8.4-9.0	40-50	no control
200- 3974'	LSND	8.4-9.0	30-60	no control
3974- 6350'	Air/Mist/N2*	n/a	n/a	n/a

Pit levels will be visually monitored to detect gain or loss of fluid control.

*Nitrogen might be used in conjunction with or instead of air to prevent a down hole fire.

Casing Program (as listed, the equivalent, or better):

<u>Measured</u>		<u>Csq Size</u>	<u>Weight</u>	<u>Grade</u>
<u>Hole Size</u>	<u>Depth</u>			
12 1/4"	0' - 200'	9 5/8"	32.3#	H-40
8 3/4"	0' - 3974'	7"	20.0#	J-55
6 1/4"	3874' - 6350'	4 1/2"	10.5#	J-55

Tubing Program: 0' -6350' 2 3/8" 4.7# J-55