

UNITED STATES  
DEPARTMENT OF THE INTERIOR  
BUREAU OF LAND MANAGEMENT

APPLICATION FOR PERMIT TO DRILL, DEEPEN, OR PLUG BACK

1a. Type of Work DRILL	5. Lease Number SF-079394
1b. Type of Well GAS	Unit Reporting Number 8910009508
2. Operator BURLINGTON RESOURCES Oil & Gas Company	6. If Indian, All. or Tribe
3. Address & Phone No. of Operator PO Box 4289, Farmington, NM 87499 (505) 326-9700	7. Unit Agreement Name San Juan 27-5 Unit
4. Location of Well 1035' FNL, 1945' FWL Latitude 36° 33.8, Longitude 107° 22.0	8. Farm or Lease Name San Juan 27-5 Unit
	9. Well Number 153R
14. Distance in Miles from Nearest Town 11 miles from Gobernador	10. Field, Pool, Wildcat Tapacito Pict. Cliffs
15. Distance from Proposed Location to Nearest Property or Lease Line 1035'	11. Sec., Twn, Rge, Mer. (NMPM) C Sec. 21, T-27-N, R-5-W
16. Acres in Lease	API # 30-039-26533
17. Acres Assigned to Well 320 W/2 160 NW/4	12. County Rio Arriba
18. Distance from Proposed Location to Nearest Well, Drig, Compl, or Applied for on this Lease 75'	13. State NM
19. Proposed Depth 3566'	20. Rotary or Cable Tools Rotary
21. Elevations (DF, FT, GR, Etc.) 6569' GR	22. Approx. Date Work will Start
23. Proposed Casing and Cementing Program See Operations Plan attached	24. Authorized by: <u>Shirley Cole</u> Regulatory/Compliance Supervisor
	Date 10-6-00

PERMIT NO.

APPROVAL DATE

APPROVED BY /s/ Jim Lovato

TITLE Team Lead, Petroleum Management

DATE 10-6-00

Archaeological Report to be submitted

Threatened and Endangered Species Report to be submitted

NOTE: This format is issued in lieu of U.S. BLM Form 3160-3

Title 18 U.S.C. Section 1001, makes it a crime for any person knowingly and willfully to make to any department or agency of the United States any false, fictitious or fraudulent statements or presentations as to any matter within its jurisdiction.

NMOCU

District I  
PO Box 1980, Hobbs, NM 88241-1980

District II  
PO Drawer DD, Artesia, NM 88211-0719

District III  
1000 Rio Brazos Rd., Aztec, NM 87410

District IV  
PO Box 2088, Santa Fe, NM 87504-2088

State of New Mexico  
Energy, Minerals & Natural Resources Department

Form C-102  
Revised February 21, 1994

Instructions on back  
Submit to Appropriate District Office  
State Lease - 4 Copies  
Fee Lease - 3 Copies

OIL CONSERVATION DIVISION  
PO Box 2088  
Santa Fe, NM 87504-2088

AMENDED REPORT

### WELL LOCATION AND ACREAGE DEDICATION PLAT

*API Number 30-039-26533		*Pool Code 85920	*Pool Name Tapacito Pictured Cliffs	
*Property Code 7454	*Property Name SAN JUAN 27-5 UNIT			*Well Number 153R
*GRID No. 14538	*Operator Name BURLINGTON RESOURCES OIL & GAS COMPANY			*Elevation 6569'

#### 10 Surface Location

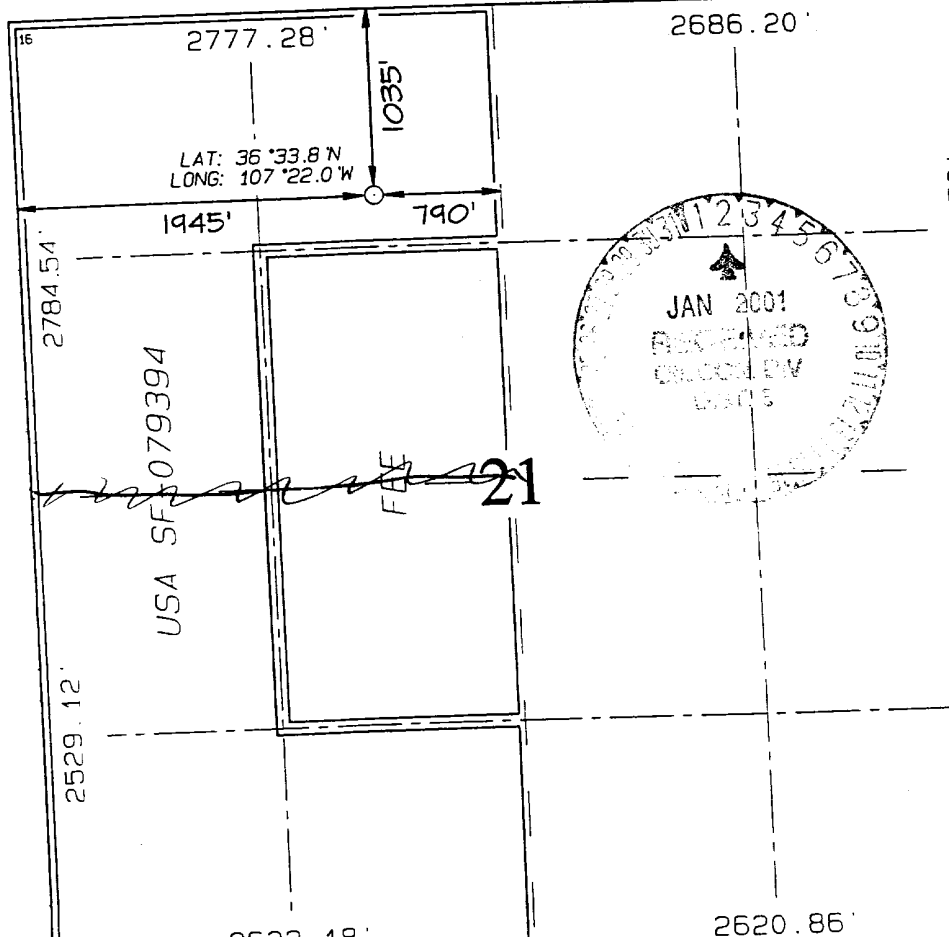
UL or lot no.	Section	Township	Range	Lot Ion.	Feet from the	North/South line	Feet from the	East/West line	County
C	21	27N	5W		1035	NORTH	1945	WEST	RIO ARriba

#### 11 Bottom Hole Location If Different From Surface

UL or lot no.	Section	Township	Range	Lot Ion.	Feet from the	North/South line	Feet from the	East/West line	County

*Dedicated Acres 160 NW 1/4 W/320	*Joint or Infill	*Consolidation Code	*Order No. dedication 160 acres for density purposes for the Pictured Cliffs <del>320 acres for revenue purposes for the Pictured Cliffs</del>
---	------------------	---------------------	---

NO ALLOWABLE WILL BE ASSIGNED TO THIS COMPLETION UNTIL ALL INTERESTS HAVE BEEN CONSOLIDATED OR A NON-STANDARD UNIT HAS BEEN APPROVED BY THE DIVISION



#### 17 OPERATOR CERTIFICATION

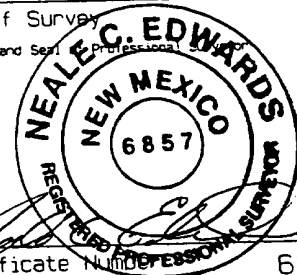
I hereby certify that the information contained herein is true and complete to the best of my knowledge and belief

Signature: *Peggy Cole*  
Printed Name: Peggy Cole  
Regulatory Supervisor  
Title: \_\_\_\_\_  
Date: 10-6-00

#### 18 SURVEYOR CERTIFICATION

I hereby certify that the well location shown on this plat was plotted from field notes of actual surveys made by me or under my supervision, and that the same is true and correct to the best of my belief.

SEPTEMBER 1, 2000  
Date of Survey  
Signature and Seal: *Neale C. Edwards*  
Certificate Number: 6857

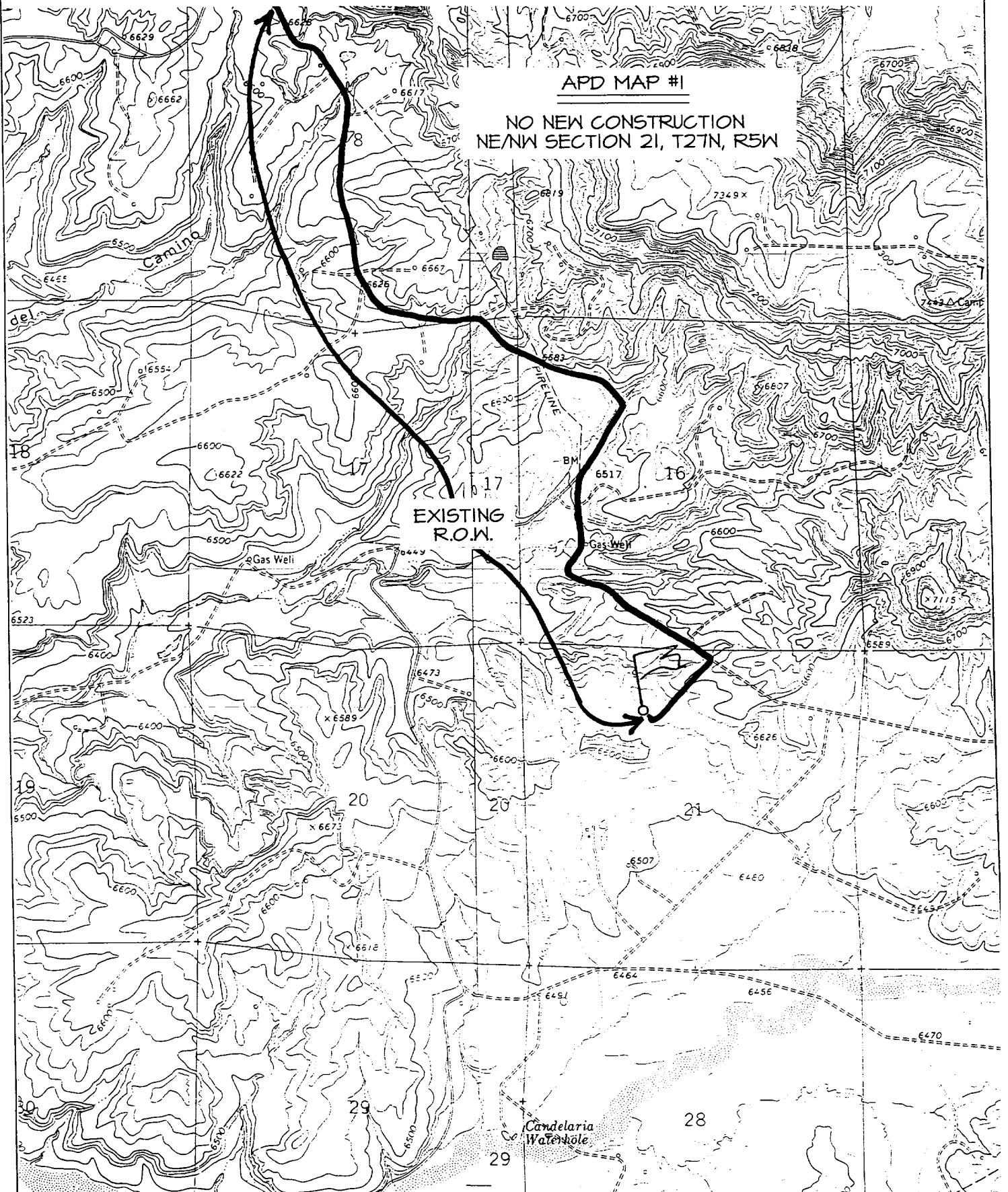


BURLINGTON RESOURCES OIL & GAS COMPANY SAN JUAN 27-5 UNIT #153R

1035' FNL & 1945' FWL, SECTION 21, T27N, R5W, N.M.P.M.  
RIO ARriba COUNTY, NEW MEXICO

APD MAP #1

NO NEW CONSTRUCTION  
NE/NW SECTION 21, T27N, R5W



## OPERATIONS PLAN

**Well Name:** San Juan 27-5 Unit #153R  
**Location:** 1035' FNL, 1945' FWL, Section 21, T-27-N, R-5-W  
Rio Arriba County, New Mexico  
Latitude 36° 33.8, Longitude 107° 22.0  
**Formation:** Tapacito Pictured Cliffs  
**Elevation:** 6569' GL

<b>Formation:</b>	<b>Top</b>	<b>Bottom</b>	<b>Contents</b>
Surface	San Jose	2751'	
Ojo Alamo	2751'	2849'	aquifer
Kirtland	2849'	2906'	gas
Fruitland	2906'	3366'	gas
Pictured Cliffs	3366'		gas
Total Depth	3566'		

**Logging Program:** Surface to TD - CBL-CCL-GR

**Coring Program:** None

**Mud Program:**

<u>Interval</u>	<u>Type</u>	<u>Weight</u>	<u>Vis.</u>	<u>Fluid Loss</u>
0- 200'	Spud	8.4-9.0	40-50	no control
200-3566'	FW	8.4-9.0	32-45	no control

**Casing Program (as listed, equivalent, or better):**

<u>Hole Size</u>	<u>Depth Interval</u>	<u>Csq. Size</u>	<u>Wt.</u>	<u>Grade</u>
8 3/4"	0 - 200'	7"	20.0#	J-55
6 1/4"	0 - 3566'	2 7/8"	6.5#	J-55

**Float Equipment:** 7" surface casing - saw tooth guide shoe.  
Centralizers will be run in accordance with Onshore Order #2.

—2 7/8" production casing - float shoe on bottom. Three centralizers run every other joint above shoe. Seven centralizers run every 3rd joint to the base of the Ojo Alamo @ 2849'. Two turbolizing type centralizers - one below and one into the base of the Ojo Alamo @ 2849'. Standard centralizers thereafter every fourth joint up to the base of the surface pipe.

**Wellhead Equipment:** 7" x 2 7/8" 2000 psi screw on independent wellhead.

**Cementing:**

7" surface casing - cement with 76 sx Class "B" cement with 1/4# flocele/sx and 3% calcium chloride (90 cu.ft. of slurry, 200% excess to circulate to surface). WOC 8 hrs. Test casing to 600 psi for 30 minutes.

San Juan 27-5 Unit #153R

2 7/8" production casing - Lead w/371 sx Class "B" w/3% sodium metasilicate, 1/2 pps Flocele and 10 pps gilsonite. Tail w/90 sx 50/50 Class "B" Poz w/2% gel, 1/4 pps Flocele, 5 pps gilsonite and 2% calcium chloride (1198 cu.ft. of slurry, 100% excess to circulate to surface). WOC 8 hrs. If cement does not circulate to surface, a CBL will be run during completion to determine TOC.

**BOP and tests:**

Surface to TD - 11" 2000 psi (minimum double gate BOP stack (Reference Figure #1 and #2). Prior to drilling out surface casing, test rams to 600 psi/30 min.

Completion - 6" 2000 psi (minimum) double gate BOP stack (Reference Figure #2). Prior to completion operations, test rams and casing to 2000 psi/15 min.

From surface to TD - choke manifold (Reference Figure #3).

Pipe rams will be actuated to least once each day and blind rams actuated once each trip to test proper functioning. An upper kelly cock valve with handle and drill string safety valves to fit each drill string will be maintained and available on the rig floor.

**Additional information:**

- \* The Pictured Cliffs formation will be completed.
- \* Anticipated pore pressure for the Pictured Cliffs is 500 psi.
- \* This gas is dedicated.
- \* The west half of section 21 is dedicated to the Pictured Cliffs.

  
\_\_\_\_\_  
Drilling Engineer

10/16/00  
\_\_\_\_\_  
Date