

UNITED STATES
DEPARTMENT OF THE INTERIOR
BUREAU OF LAND MANAGEMENT

APPLICATION FOR PERMIT TO DRILL, DEEPEN, OR PLUG BACK

1a. Type of Work DRILL	5. Lease Number SF-080672 Unit Reporting Number 891001054A
1b. Type of Well GAS	6. If Indian, All. or Tribe
2. Operator BURLINGTON RESOURCES Oil & Gas Company	7. Unit Agreement Name San Juan 27-4 Unit
3. Address & Phone No. of Operator PO Box 4289, Farmington, NM 87499 (505) 326-9700	8. Farm or Lease Name San Juan 27-4 Unit 9. Well Number 156A
4. Location of Well 1020' FSL, 1910' FEL Latitude 36° 33.3, Longitude 107° 12.0	10. Field, Pool, Wildcat Blanco Mesaverde 11. Sec., Twn, Rge, Mer. (NMPM) Sec. 24, T-27-N, R-4-W API # 30-039-26537
14. Distance in Miles from Nearest Town 23 miles from Gobernador	12. County Rio Arriba 13. State NM
15. Distance from Proposed Location to Nearest Property or Lease Line 1020'	17. Acres Assigned to Well 320 E/2
16. Acres in Lease	
18. Distance from Proposed Location to Nearest Well, Drlg, Compl, or Applied for on this Lease 160'	
19. Proposed Depth 6645'	20. Rotary or Cable Tools Rotary
21. Elevations (DF, FT, GR, Etc.) 7298' GR	22. Approx. Date Work will Start
23. Proposed Casing and Cementing Program See Operations Plan attached	DRILLING OPERATIONS AUTHORIZED ARE SUBJECT TO COMPLIANCE WITH ATTACHED "GENERAL REQUIREMENTS"
24. Authorized by: <u>Regan Cole</u> Regulatory/Compliance Supervisor	<u>10-20-00</u> Date

PERMIT NO. _____ APPROVAL DATE _____
APPROVED BY _____ TITLE _____ DATE _____

Archaeological Report to be submitted

Threatened and Endangered Species Report to be submitted

NOTE: This format is issued in lieu of U.S. BLM Form 3160-3

Title 18 U.S.C. Section 1001, makes it a crime for any person knowingly and willfully to make to any department or agency of the United States any false, fictitious or fraudulent statements or presentations as to any matter within its jurisdiction.

NMOCU

UNITED STATES
DEPARTMENT OF THE INTERIOR
BUREAU OF LAND MANAGEMENT

Sundry Notices and Reports on Wells

1. Type of Well
GAS

2. Name of Operator

**BURLINGTON
RESOURCES**

OIL & GAS COMPANY

3. Address & Phone No. of Operator

PO Box 4289, Farmington, NM 87499 (505) 326-9700

4. Location of Well, Footage, Sec., T, R, M

1020' FSL, 1910' FEL, Sec. 24, T-27-N, R-4-W, NMPM

5. Lease Number
SF-080672

6. If Indian, All. or
Tribe Name

7. Unit Agreement Name

San Juan 27-4 Unit

8. Well Name & Number

San Juan 27-4 U #156A

9. API Well No.

30-039-

10. Field and Pool

Blanco Mesaverde

11. County and State

Rio Arriba Co, NM

12. CHECK APPROPRIATE BOX TO INDICATE NATURE OF NOTICE, REPORT, OTHER DATA

Type of Submission

Type of Action

<input checked="" type="checkbox"/> Notice of Intent	<input type="checkbox"/> Abandonment	<input checked="" type="checkbox"/> Change of Plans
<input type="checkbox"/> Subsequent Report	<input type="checkbox"/> Recompletion	<input type="checkbox"/> New Construction
<input type="checkbox"/> Final Abandonment	<input type="checkbox"/> Plugging Back	<input type="checkbox"/> Non-Routine Fracturing
	<input type="checkbox"/> Casing Repair	<input type="checkbox"/> Water Shut off
	<input checked="" type="checkbox"/> Altering Casing	<input type="checkbox"/> Conversion to Injection
	<input type="checkbox"/> Other -	

13. Describe Proposed or Completed Operations

It is intended to alter the submitted casing depths and cement of the subject well.

Revisions:

Mud Program:

Interval	Type	Weight	Fluid Loss
200-4460'	LSND	8.4-9.0	No control
4460-6645'	Air/Mist	n/a	n/a

Casing Program:

Hole Size	Depth Interval	Casing Size	Weight	Grade
8 3/4"	0-4000'	7"	20.0#	J-55
8 3/4"	4000-4460'	7"	23.0#	J-55
6 1/4"	4360-6645'	4 1/2"	10.5#	J-55

Cementing Program:

7" intermediate casing - lead w/475 sx 50/50 Class "G"/Trinity Light with 2.5% sodium metasilicate, 2% calcium chloride, 10 pps Gilsonite, 0.5 pps Flocele. Tail with 90 sx Class "G" 50/50 poz w/2% gel, 2% calcium chloride, 5 pps Gilsonite, 0.1% antifoam and 0.25 pps Flocele (1342 cu.ft. of slurry, 100% excess to circulate to surface).

7" intermediate casing alternative two stage: Stage collar at 3690'. First stage: cement w/181 sx 50/50 Class "G" poz w/2% gel, 2% calcium chloride, 5 pps Gilsonite, 0.1% antifoam and 0.25 pps Flocele. Second stage: w/430 sx 50/50 Class "G"/Trinity Light with 2.5% sodium metasilicate, 2% calcium chloride, 10 pps Gilsonite, 0.5 pps Flocele (1342 cu.ft. of slurry, 100% excess to circulate to surface).

4 1/2" production liner - cement with 228 sx Class "G" 50/50 poz w/4.5% gel, 0.25 pps Flocele, 5 pps Gilsonite, 0.25% fluid loss, 0.1% retardant (328 cu.ft., 50% excess to circulate liner).

14. I hereby certify that the foregoing is true and correct.

Signed *Regan Case* Title Regulatory Supervisor Date 11/7/00

(This space for Federal or State Office use)

APPROVED BY *B. Lee Otermi* Title _____ Date _____

CONDITION OF APPROVAL, if any:

District I
PO Box 1980, Hobbs, NM 88241-1980

District II
PO Drawer DD, Artesia, NM 88211-0719

District III
1000 Rio Brazos Rd., Aztec, NM 87410

District IV
PO Box 2088, Santa Fe, NM 87504-2088

State of New Mexico
Energy, Minerals & Natural Resources Department

OIL CONSERVATION DIVISION
PO Box 2088
Santa Fe, NM 87504-2088

Form C-102
Revised February 21, 1994
Instructions on back
Submit to Appropriate District Office
State Lease - 4 Copies
Fee Lease - 3 Copies

☐ AMENDED REPORT

WELL LOCATION AND ACREAGE DEDICATION PLAT

*API Number 30-039-26537		*Pool Code 72319	*Pool Name Blanco Mesaverde
*Property Code 7452	*Property Name SAN JUAN 27-4 UNIT		*Well Number 156A
*GRID No. 14538	*Operator Name BURLINGTON RESOURCES OIL & GAS COMPANY		*Elevation 7298

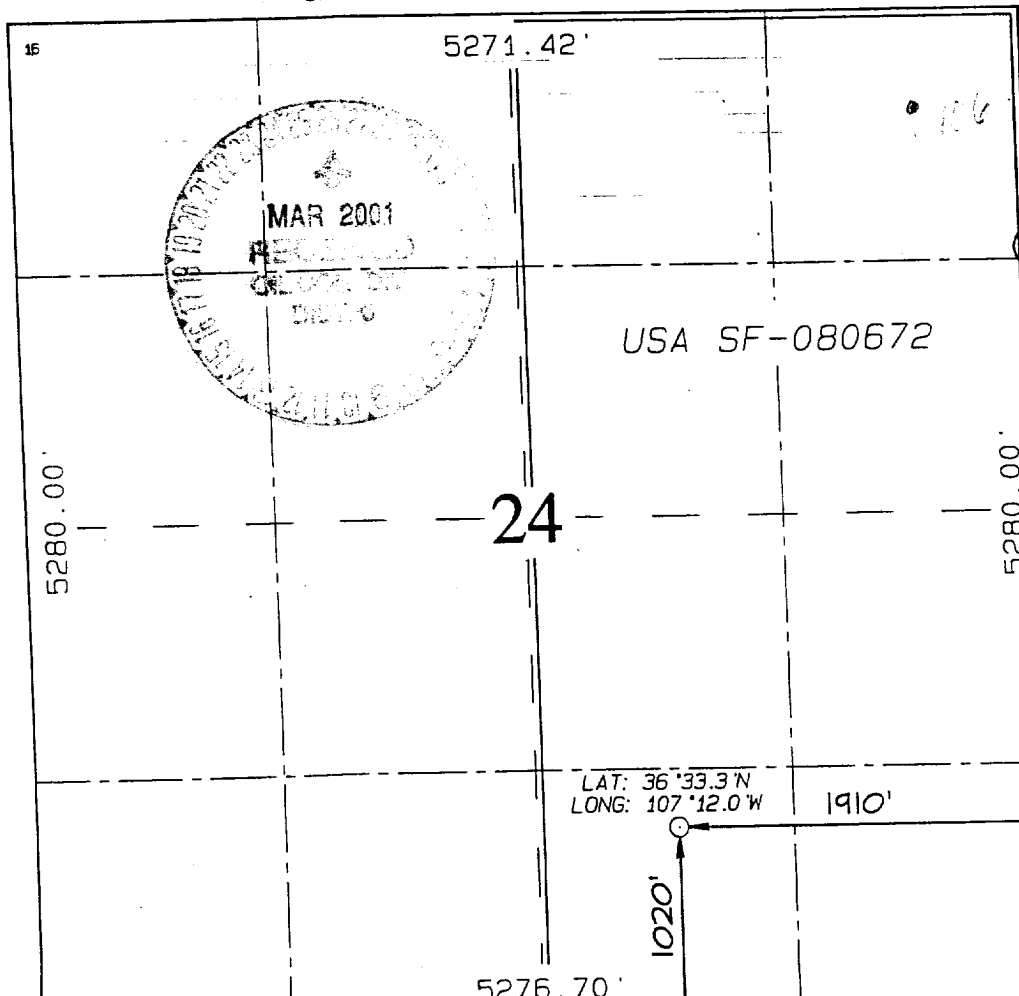
¹⁰ Surface Location

UL or lot no. 0	Section 24	Township 27N	Range 4W	Lot Idn.	Feet from the 1020	North/South line SOUTH	Feet from the 1910	East/West line EAST	County RIO ARriba
--------------------	---------------	-----------------	-------------	----------	-----------------------	---------------------------	-----------------------	------------------------	----------------------

¹¹ Bottom Hole Location If Different From Surface

UL or lot no.	Section	Township	Range	Lot Idn.	Feet from the	North/South line	Feet from the	East/West line	County
¹² Dedicated Acres MV-E/320		¹³ Joint or Infill		¹⁴ Consolidation Code		¹⁵ Order No.			

NO ALLOWABLE WILL BE ASSIGNED TO THIS COMPLETION UNTIL ALL INTERESTS HAVE BEEN CONSOLIDATED
OR A NON-STANDARD UNIT HAS BEEN APPROVED BY THE DIVISION



¹⁷ OPERATOR CERTIFICATION
I hereby certify that the information contained herein is true and complete to the best of my knowledge and belief

Peggy Cole
Signature
Peggy Cole
Printed Name
Regulatory Supervisor
Title
10-20-00
Date

¹⁸ SURVEYOR CERTIFICATION

I hereby certify that the well location shown on this plat was plotted from field notes of actual surveys made by me or under my supervision, and that the same is true and correct to the best of my belief.

SEPTEMBER 10, 2000

Date of Survey
Signature and Seal

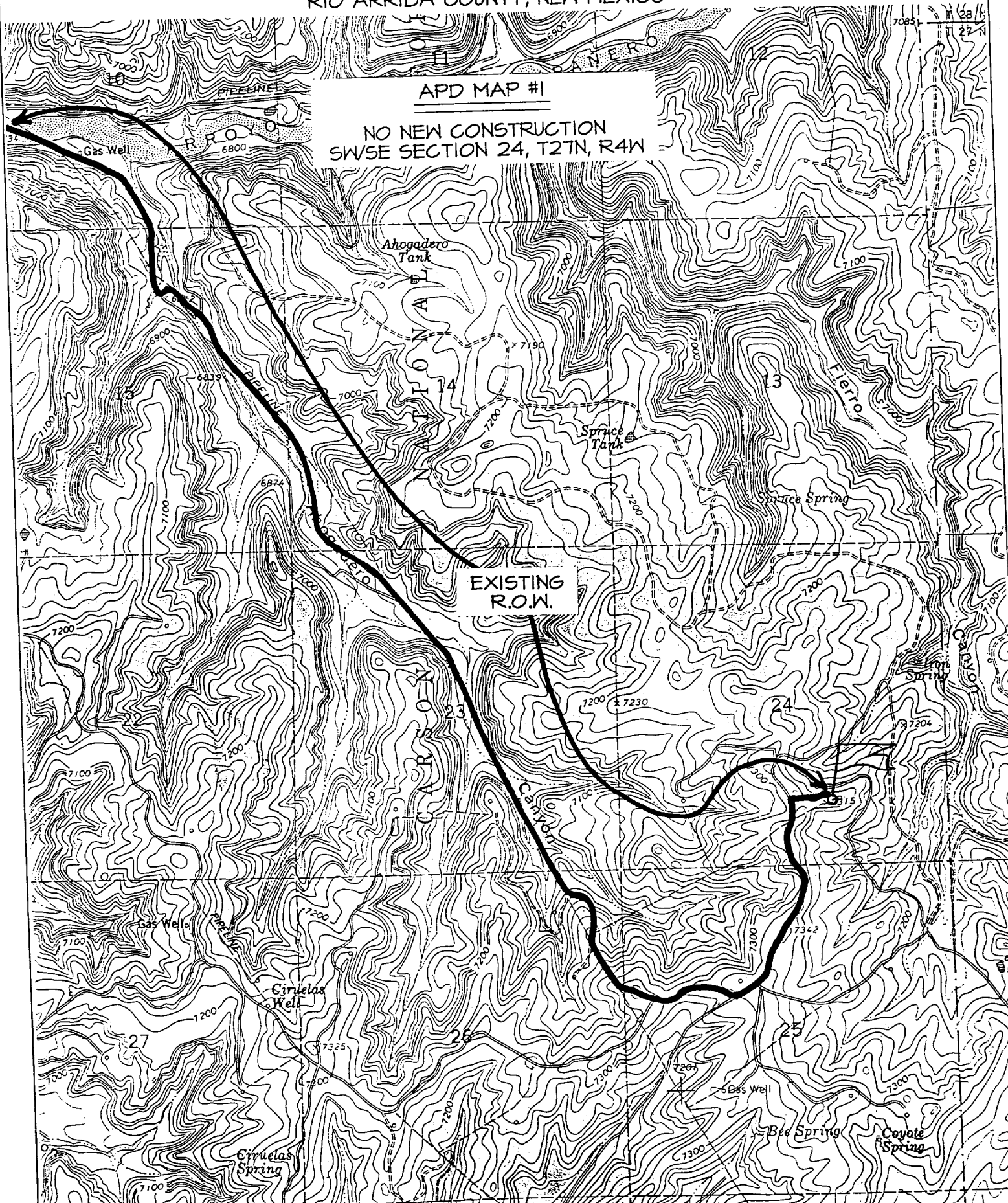
Neale C. Edwards
NEALE C. EDWARDS
NEW MEXICO
6857
Certificate of Professional Surveyor

BURLINGTON RESOURCES OIL & GAS COMPANY SAN JUAN 27-4 UNIT #156A

1020' FSL & 1910' FEL, SECTION 24, T27N, R4W, N.M.P.M.
RIO ARRIBA COUNTY, NEW MEXICO

APD MAP #1

NO NEW CONSTRUCTION
SWSE SECTION 24, T27N, R4W



OPERATIONS PLAN

Well Name: San Juan 27-4 Unit #156A
Location: 1020' FSL, 1910' FEL, Section 24, T-27-N, R-4-W
Rio Arriba County, New Mexico
Latitude 36° 33.3, Longitude 107° 12.0
Formation: Blanco Mesa Verde
Elevation: 7298' GL

<u>Formation Tops:</u>	<u>Top</u>	<u>Bottom</u>	<u>Contents</u>
Surface	San Jose	3570'	
Ojo Alamo	3570'	3750'	aquifer
Kirtland	3750'	3790'	
Fruitland	3790'	4115'	gas
Pictured Cliffs	4115'	4210'	gas
Lewis	4210'	4635'	gas
Intermediate TD	4310'		
Huerfanito Bentonite	4635'	5090'	gas
Chacra	5090'	5900'	gas
Massive Cliff House	5900'	5960'	gas
Menefee	5960'	6245'	gas
Point Lookout	6245'		gas
Total Depth	6645'		

Logging Program:

Mud Logs/Coring/DST -
Mud logs - none
Coring - none
DST - none
Cased hole - Gamma Ray, Cement bond - surface to TD

Mud Program:

<u>Interval- MD</u>	<u>Type</u>	<u>Weight</u>	<u>Vis.</u>	<u>Fluid Loss</u>
0- 200'	Spud	8.4-9.0	40-50	no control
200- 4310'	LSND	8.4-9.0	30-60	no control
4310- 6645'	Air/Mist/N2*	n/a	n/a	n/a

Pit levels will be visually monitored to detect gain or loss of fluid control.

*Nitrogen might be used in conjunction with or instead of air to prevent a down hole fire.

Casing Program (as listed, the equivalent, or better):

<u>Hole Size</u>	<u>Measured Depth</u>	<u>Csg Size</u>	<u>Weight</u>	<u>Grade</u>
12 1/4"	0' - 200'	9 5/8"	32.3#	H-40
8 3/4"	0' - 4310' 4000'	7"	20.0#	J-55
6 1/4"	4210' - 6645'	4 1/2"	10.5#	J-55

4000-4 460 23# 7"

Tubing Program: 0' -6645' 2 3/8" 4.7# J-55

BOP Specifications, Wellhead and Tests:

Surface to Intermediate TD -

11" 2000 psi minimum double gate BOP stack (Reference Figure #1). After nipple-up prior to drilling out surface casing, rams and casing will be tested to 600 psi for 30 minutes.

Intermediate TD to Total Depth -

11" 2000 psi minimum double gate BOP stack (Reference Figure #1). After nipple-up prior to drilling out intermediate casing, rams and casing will be tested to 1500 psi for 30 minutes.

Surface to Total Depth -

2" nominal, 2000 psi minimum choke manifold (Reference Figure #3).

Completion Operations -

7 1/16" 2000 psi double gate BOP stack (Reference Figure #2). After nipple-up prior to completion, pipe rams, casing and liner top will be tested to 2000 psi for 15 minutes.

Wellhead -

9 5/8" x 7" x 2 3/8" x 2000 psi tree assembly.

General -

- Pipe rams will be actuated once each day and blind rams will be actuated once each trip to test proper functioning.
- An upper kelly cock valve with handle available and drill string valves to fit each drill string will be available on the rig floors at all times.
- BOP pit level drill will be conducted weekly for each drill crew.
- All BOP tests & drills will be recorded in daily drilling reports.
- Blind and pipe rams will be equipped with extension hand wheels.

Cementing:

9 5/8" surface casing - cement with 159 sx Class "B" cement with 1/4# flocele/sx and 3% calcium chloride (188 cu.ft. of slurry, 200% excess to circulate to surface). WOC 8 hrs. Test casing to 600 psi for 30 minutes.

Saw tooth guide shoe on bottom. Bowspring centralizers will be run in accordance with Onshore Order #2.

7" intermediate casing -

Lead w/408 sx Class "B" w/3% sodium metasilicate, 10# gilsonite/sx and 0.5# flocele/sx. Tail w/90 sx 50/50 Class "B" Poz w/2% gel, 2% calcium chloride, 5# gilsonite/sx, 0.1% antifoam and 0.25# flocele/sx (1296 cu.ft. of slurry, 100% excess to circulate to surface.) WOC minimum of 8 hours before drilling out intermediate casing. If cement does not circulate to surface, a CBL will be run to determine TOC. Test casing to 1500 psi for 30 minutes.

7" intermediate casing alternative two stage: Stage collar at 3690'. First stage: cement with 148 sx Class "B" 50/50 poz w/2% gel, 5 pps Gilsonite, 2% calcium chloride, 0.5 pps Cellophane. Second stage: 383 sx Class "B" with 3% sodium metasilicate, 1/2 pps Cellophane, 10 pps Gilsonite (1296 cu.ft., 100% excess to circulate to surface).

Cement nose guide shoe on bottom with float collar spaced on top of shoe joint. Bowspring centralizers spaced every other joint off bottom, to the base of the Ojo Alamo at 3750'. Two turbolating centralizers at the base of the Ojo Alamo at 3750'. Bowspring centralizers spaced every fourth joint from the base of the Ojo Alamo to the base of the surface casing.

4 1/2" Production Liner -

Cement to circulate liner top. Pump 248 sx 50/50 Class "B" Poz w/1/4# flocele/sx, 4% gel, 0.1% retardant, 5# gilsonite/sx, 0.3% fluid loss additive, 0.35% dispersant (350 cu.ft., 40% excess to circulate liner top). WOC a minimum of 18 hrs prior to completing.

Cement nose guide shoe on bottom with float collar spaced on top of shoe joint. The liner hanger will have a rubber packoff.

Note: If open hole logs are run, cement volumes will be based on 25% excess over caliper volumes.