

UNITED STATES
DEPARTMENT OF THE INTERIOR
BUREAU OF LAND MANAGEMENT

FORM APPROVED
OMB NO. 1004-0136
Expires February 28, 1995

APPLICATION FOR PERMIT TO DRILL OR DEEPEN

1a. TYPE OF WORK

DRILL ☒

DEEPEN ☐

b. TYPE OF WELL

OIL WELL ☐

CAS WELL ☒

OTHER

SINGLE ZONE ☐

MULTIPLE ZONE ☒

2. NAME OF OPERATOR

Conoco Inc.

3. ADDRESS AND TELEPHONE NO.

10 Desta Drive, Suite 607W, Midland, TX 79705; 915/686-5565

4. LOCATION OF WELL (Report location clearly and in accordance with any State requirements*)

At surface

1510' FNL & 1475' FWL

At proposed prod. Zone

1510' FNL & 1475' FWL

14. DISTANCE IN MILES AND DIRECTION FROM NEAREST TOWN OR POST OFFICE*

5. LEASE DESIGNATION AND SERIAL NO.

SF 078496

6. IF INDIAN, ALLOTTEE OR TRIBE NAME

7. UNIT AGREEMENT NAME

San Juan 28-7

8. FARM OR LEASE NAME WELL NO.

#260M

9. API WELL NO.

30-039-26 S4c

10. FIELD AND POOL, OR WILDCAT

Blanco Mesaverde/Basin Dakota

11. SEC., T., R., M., OR BLK.
AND SURVEY OR AREA
Sec. 5, T27N, R7W

12. COUNTY OR PARISH

Rio Arriba

13. STATE

NM

15. DISTANCE FROM PROPOSED*

LOCATION TO NEAREST
PROPERTY OR LEASE LINE, FT.
(Also to nearest dirlg. Unit line, if any)

6. NO. OF ACRES IN LEASE

SJ 28-7 Unit

17. NO. OF ACRES ASSIGNED
TO THIS WELL

W/ 320

18. DISTANCE FROM PROPOSED LOCATION*
TO NEAREST WELL, DRILLING, COMPLETED,
OR APPLIED FOR, ON THIS LEASE, FT.

9. PROPOSED DEPTH

7764'

20. ROTARY OR CABLE TOOLS

Rotary

21. ELEVATIONS (Show whether DF, RT, GR, etc.)

6774'

22. APPROX. DATE WORK WILL START*

11/24/00

PROPOSED CASING AND CEMENTING PROGRAM

SIZE OF HOLE	GRADE, SIZE OF CASING	WEIGHT PER FOOT	SETTING DEPTH	QUANTITY OF CEMENT
12 1/2"	J-55; 9 5/8"	36#	250'	138 sxs, circ.
8 3/4"	J-55; 7"	20#	3900'	601 sxs, circ.
6 1/4"	J-55; 4 1/2"	10.5#	7764'	356 sxs, circ.

It is proposed to drill a vertical wellbore to be downhole commingled in the Mesaverde/Dakota Pools following the acquisition of sufficient production test data for allocation purposes. A downhole commingling application will be filed with the BLM and OCD. An NOS was filed 05/25/00. The well will be drilled and equipped according to the following additional attachments:

1. Well Location & Acreage Dedication Plat (C-102).
2. Proposed Well Plan Outline. *This action is subject to technical and procedural review pursuant to 43 CFR 3165.3 and appeal pursuant to 43 CFR 3165.4.*
3. Cementing Plan.
4. Blowout Preventer Hookup.
5. Surface Use Plan including temporary pipeline tie specifications.
6. Production Facility Layout.

APD/ROW

BLM PERSONNEL AUTHORIZED ARE
ONLY TO BE ISSUED WITH ATTACHED
"FEDERAL ACQUISITION SYSTEM"

This application includes ROW's for the well pad, cathodic protection, and pipeline. The pipe-wall thickness is .156 and the pipe-wall strength is 42,000# yield.

IN ABOVE SPACE DESCRIBE PROPOSED PROGRAM: If proposal is to deepen give data on present productive zone and proposed new productive zone. If proposal is to drill or deepen directionally, give pertinent data on subsurface locations and measured and true vertical depths. Give blowout preventer program, if any.

SIGNED Kimberly Southall TITLE Analyst

DATE 10/24/00

(This space for Federal or State office Use)

PERMIT NO.

APPROVAL DATE

Application approval does not warrant or certify that the applicant holds legal or equitable title to those rights in the subject lease which would entitle the applicant to conduct operations thereon.

CONDITIONS OF APPROVAL, IF ANY:

APPROVED BY

Jim Lovato

TITLE

DATE

11/31/2001

*See Instructions On Reverse Side

Title 18 U.S.C. Section 1001, makes it a crime for any person knowingly and willfully to make to any department or agency of the United States any false, fictitious or fraudulent statements or representations as to any matter within its jurisdiction.

District I
PO Box 1980, Hobbs, NM 88241-1980

District II
PO Drawer 00, Artesia, NM 88211-0719

District III
1000 Rio Brazos Rd., Aztec, NM 87410

District IV
PO Box 2088, Santa Fe, NM 87504-2088

State of New Mexico
Energy, Minerals & Natural Resources Department

Form C-102
Revised February 21, 1994

Instructions on back
Submit to Appropriate District Office
State Lease - 4 Copies
Fee Lease - 3 Copies

OIL CONSERVATION DIVISION
PO Box 2088
Santa Fe, NM 87504-2088

☐ AMENDED REPORT

WELL LOCATION AND ACREAGE DEDICATION PLAT

¹ API Number 30-039-26540	² Pool Code 72319 / 71599	³ Pool Name BLANCO MESAVERDE / BASIN DAKOTA
⁴ Property Code 016608	⁵ Property Name SAN JUAN 28-7 UNIT	⁶ Well Number 260M
⁷ GRID No. 005073	⁸ Operator Name CONOCO, INC.	⁹ Elevation 6774'

¹⁰ Surface Location

UL or lot no. F	Section 5	Township 27N	Range 7W	Lot Idn	Feet from the 1510	North/South line NORTH	Feet from the 1475	East/West line WEST	County RIO ARriba
--------------------	--------------	-----------------	-------------	---------	-----------------------	---------------------------	-----------------------	------------------------	----------------------

¹¹ Bottom Hole Location If Different From Surface

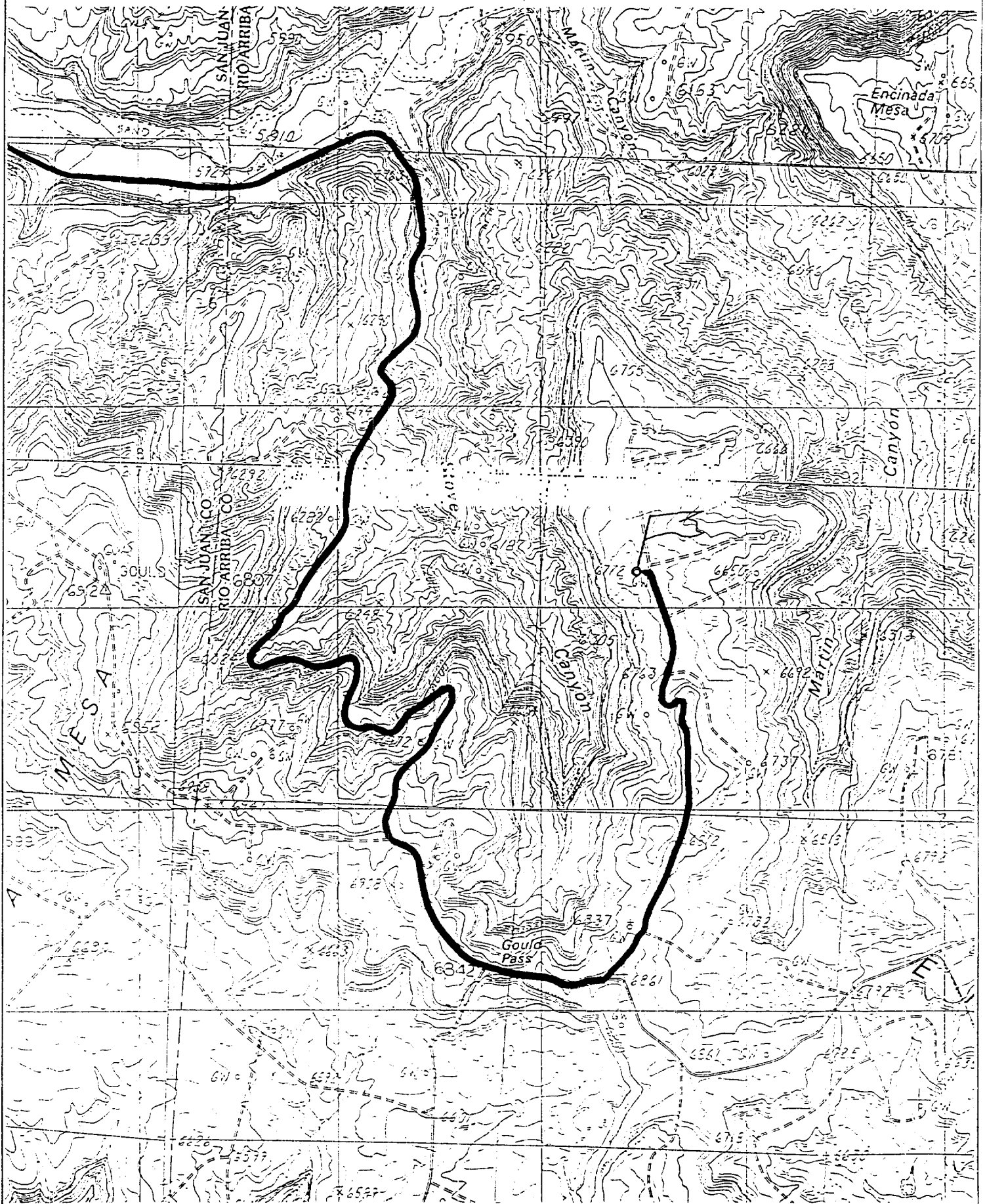
UL or lot no.	Section	Township	Range	Lot Idn	Feet from the	North/South line	Feet from the	East/West line	County
---------------	---------	----------	-------	---------	---------------	------------------	---------------	----------------	--------

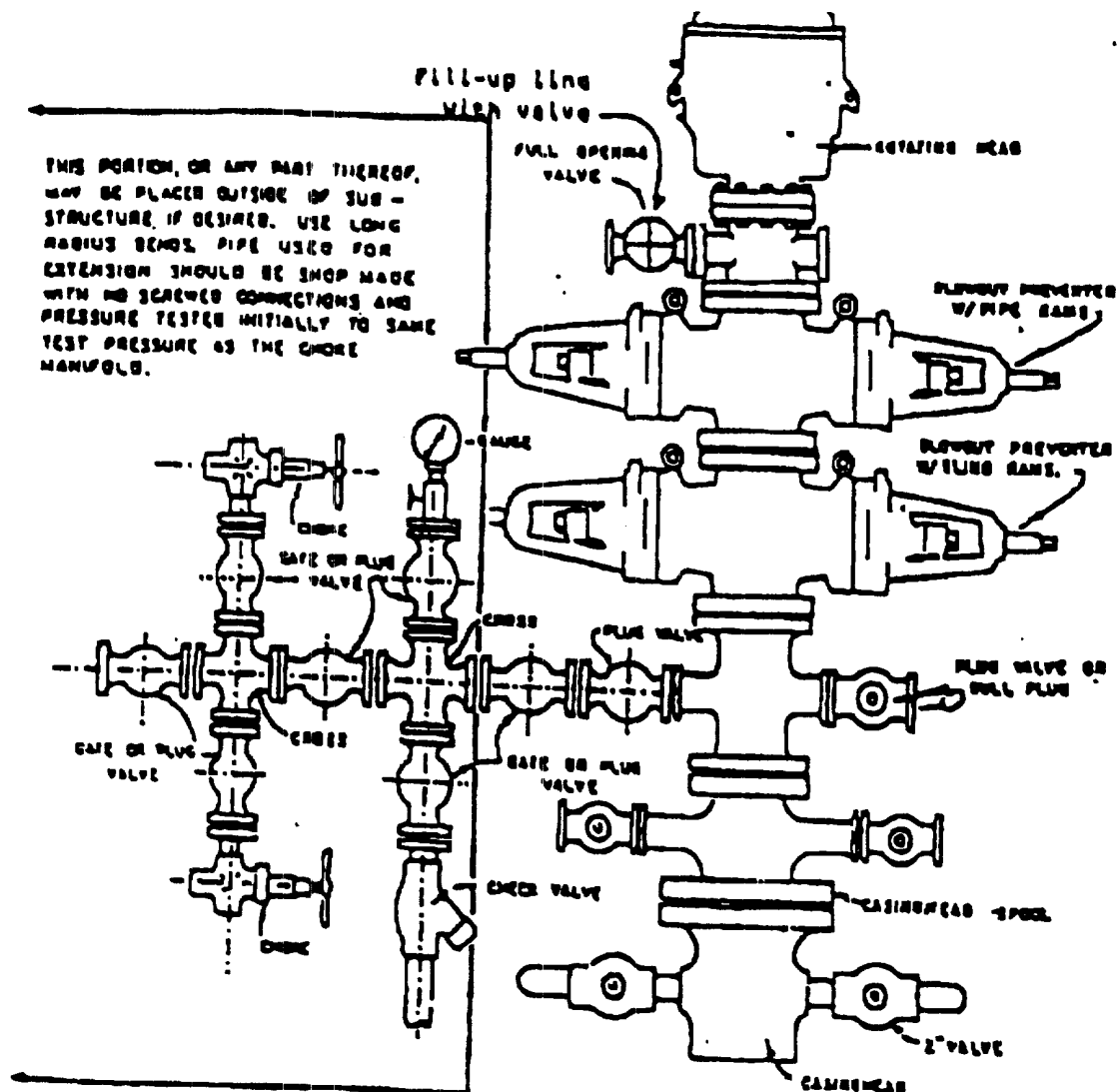
¹² Dedicated Acres 320 W/ir	¹³ Joint or Infill	¹⁴ Consolidation Code	¹⁵ Order No.
--	-------------------------------	----------------------------------	-------------------------

NO ALLOWABLE WILL BE ASSIGNED TO THIS COMPLETION UNTIL ALL INTERESTS HAVE BEEN CONSOLIDATED
OR A NON-STANDARD UNIT HAS BEEN APPROVED BY THE DIVISION

¹⁶ LOT 4 2620.86' 1383.36' 1370.16' 1475'				¹⁷ LOT 3 1510' 260M	¹⁸ LOT 2 2635.38' 1364.22' 1371.48'	¹⁹ LOT 1 2742.96' 5278.70'
²⁰ OPERATOR CERTIFICATION I hereby certify that the information contained herein is true and complete to the best of my knowledge and belief. Signature JoAnn Johnson Printed Name Sr. Property Analyst Title 10/24/2000 Date						
²¹ SURVEYOR CERTIFICATION I hereby certify that the well location shown on this plat was plotted from field notes of actual surveys made by me or under my supervision, and that the same is true and correct to the best of my belief. MAY 23, 2000 Date of Survey Signature and Seal of Professional Surveyor NEALE C. EDWARDS NEW MEXICO 6857 Certificate No. 6857						

CONOCO, INC. SAN JUAN 28-7 UNIT #260M
1510' FNL & 1475' FNL, SECTION 5, T27N, R7W, N.M.P.M.
RIO ARriba COUNTY, NEW MEXICO





BLOWOUT PREVENTER HOOKUP

Drilling contractors used in the San Juan Basing supply 3000 psi equipment, but cannot provide annular preventors because of sub-structure limitations. Maximum anticipated surface pressures for this well will not exceed the working pressure of the proposed BOP system. Please see the attached BOP diagram details 2000 psi equipment according to Onshore Order No. 2 even though the equipment will test to 3000 psi. The 2000 psi system allows the deletion of the annular preventor and fulfills your requirements (note diagram No. 1). In addition, the following equipment will comprise the 2000 psi system:

1. Two rams with one blind and one pipe ram.
2. Kill line (2 inch maximum).
3. One kill line valve.
4. One choke line valve.
5. Two chokes (reference diagram No. 1).
6. Upper kelly cock valve with handle.
7. Safety valve and subs to fit all drill strings in use.
8. Two-inch minimum choke line.
9. Pressure gauge on choke manifold.
10. Fill-up line above the upper most preventor.
11. Rotating head.

Cathodic Protection System Description

Anode Bed Type	Deep Well	
Hole Size	8"	
Hole Depth	200' - 500'	As required to place anodes below moisture and in low resistance strata.
Surface Casing	8" Diam., \geq 20' Length, Cemented In Annular Space	When needed, casing will be installed at an adequate depth to control ground water flow. Casing will extend a minimum of 2' above grade, be surrounded by a concrete pad, and sealed with a PVC cap. Steel casing will be substituted when boulders are encountered.
Vent Pipe	1" Diam. PVC	Vent pipe will extend from bottom of hole, through top of casing cap, and sealed with a 1" perforated PVC cap.
Type Of Anodes	Cast Iron Or Graphite	
Number Of Anodes	8 - 20	Sufficient quantity to achieve a total anode bed resistance of < 1 ohm and a design life \geq 20 years.
Anode Bed Backfill	Loresco SW Calcined Petroleum Coke Breeze	Installed from bottom of hole to 10' above top anode.
Anode Junction Box	8 - 20 Circuit Fiberglass Or Metal	Sealed to prevent insect & rodent intrusion.
Current Splitter Box	2 - 5 Circuit Metal	Sealed to prevent insect & rodent intrusion.
DC / AC Cable	DC: #2, #4, #6, #8 Stranded Copper (One Size Or Any Combination Of) With High Molecular Weight Polyethylene (HMWPE) Insulation. AC: #8 Stranded Copper HMWPE	18" depth in typical situation, 24" depth in roadway, & 36" depth in arroyo's and streams. EXCEPTION: If trenching is in extremely hard substratum, depth will be 6 - 12" with cable installed in conduit. Installed above foreign pipelines if 1' clearance is available, if not, installed under foreign pipeline with 1' clearance (AC cable <i>always</i> installed under foreign pipeline in conduit).
Power Source	1) Rectifier 2) Solar Power Unit 3) Thermoelectric Generator	Choice of power source depending on availability of AC & other economic factors.
External Painting	Color to be selected according to BLM specifications.	Paint applied to any surface equipment associated with the CP system which can reasonably be painted.