

UNITED STATES
DEPARTMENT OF THE INTERIOR
BUREAU OF LAND MANAGEMENT

SUBMIT IN TRIPLICATE*
(Other instructions on
reverse side)

FORM APPROVED
OMB NO. 1004-0136
Expires: February 28, 1995

APPLICATION FOR PERMIT TO DRILL OR DEEPEN

1a. TYPE OF WORK

DRILL ☒ -

DEEPEN ☐

b. TYPE OF WELL

OIL
WELL ☐

GAS
WELL ☒

OTHER

SINGLE
ZONE ☐

MULTIPLE
ZONE ☒

2. NAME OF OPERATOR

ENERGEN RESOURCES CORPORATION

3. ADDRESS AND TELEPHONE NO.

2198 Bloomfield Highway; Farmington, NM 87401

4. LOCATION OF WELL (Report location clearly and in accordance with any State requirements.)

At surface

1285' FNL, 1940' FEL

At proposed prod. zone

14. DISTANCE IN MILES AND DIRECTION FROM NEAREST TOWN OR POST OFFICE*

17 miles NW of Lindrith, New Mexico

15. DISTANCE FROM PROPOSED*

LOCATION TO NEAREST

PROPERTY OR LEASE LINE, FT.

(Also to nearest dirg. unit line, if any) 1285'

16. NO. OF ACRES IN LEASE

2560

17. NO. OF ACRES ASSIGNED
TO THIS WELL

E-320/160 - 11.5

18. DISTANCE FROM PROPOSED LOCATION*

TO NEAREST WELL, DRILLING, COMPLETED,
OR APPLIED FOR, ON THIS LEASE, FT.

1100'

19. PROPOSED DEPTH

7955' -

20. ROTARY OR CABLE TOOLS

Rotary

21. ELEVATIONS (Show whether DF, RT, GR, etc.)

7248' GL

22. APPROX. DATE WORK WILL START*

PROPOSED CASING AND CEMENTING PROGRAM

SIZE OF HOLE	GRADE SIZE OF CASING	WEIGHT PER FOOT	SETTING DEPTH	QUANTITY OF CEMENT
12-1/4"	9-5/8"	36#	200'	130 cu. ft., circ. surface -
8-3/4"	7"	20 & 23#	4265'	962 cu. ft., circ. surface -
6-1/4"	4-1/2"	11.6#	4115'-7955'	543 cu. ft., circ. intermediate -

An application is being filed with the NMOCD to downhole commingle. Selectively perforate and sand water fracture the Mesaverde and Gallup ~~Dakota~~. This gas is dedicated.

NOTE: THIS IS A PIPELINE ROW EXPEDITED APD.

IN ABOVE SPACE DESCRIBE PROPOSED PROGRAM: If proposal is to deepen, give data on present productive zone and proposed new productive zone. If proposal is to drill or deepen directionally, give pertinent data on subsurface locations and measured and true vertical depths. Give blowout preventer program, if any.

24. SIGNED [Signature] TITLE Production Superintendent

DATE 10/20/00

(This space for Federal or State office use)

PERMIT NO. _____

APPROVAL DATE _____

Application approval does not warrant or certify that the applicant holds legal or equitable title to those rights in the subject lease which would entitle the applicant to conduct operations thereon.

CONDITIONS OF APPROVAL, IF ANY:

APPROVED BY [Signature]

TITLE Asst Field Mgr

DATE NOV 29 2000

*See Instructions On Reverse Side

Title 18 U.S.C. Section 1001, makes it a crime for any person knowingly and willfully to make to any department or agency of the United States any false, fictitious or fraudulent statements or representations as to any matter within its jurisdiction.

District I
PO Box 1980, Hobbs, NM 88241-1980

District II
PO Drawer DD, Artesia, NM 88211-0719

District III
1000 Rio Brazos Rd., Aztec, NM 87410

District IV
PO Box 2088, Santa Fe, NM 87504-2088

State of New Mexico
Energy, Minerals & Natural Resources Department

OIL CONSERVATION DIVISION
PO Box 2088
Santa Fe, NM 87504-2088

Form C-102
Revised February 21, 1994
Instructions on back
Submit to Appropriate District Office
State Lease - 4 Copies
Fee Lease - 3 Copies

☐ AMENDED REPORT

WELL LOCATION AND ACREAGE DEDICATION PLAT

1 API Number 30-134-26586	2 Pool Code 72319/77360, 97064	3 Pool Name Blanco Mesaverde/Gavilan Pictured Cliffs/WL 21N34W35E, M1000
4 Property Code 21.289	5 Property Name JICARILLA 95	6 Well Number 1C
7 OGRID No. 162928	8 Operator Name ENERGEN RESOURCES CORPORATION	9 Elevation 7248

10 Surface Location

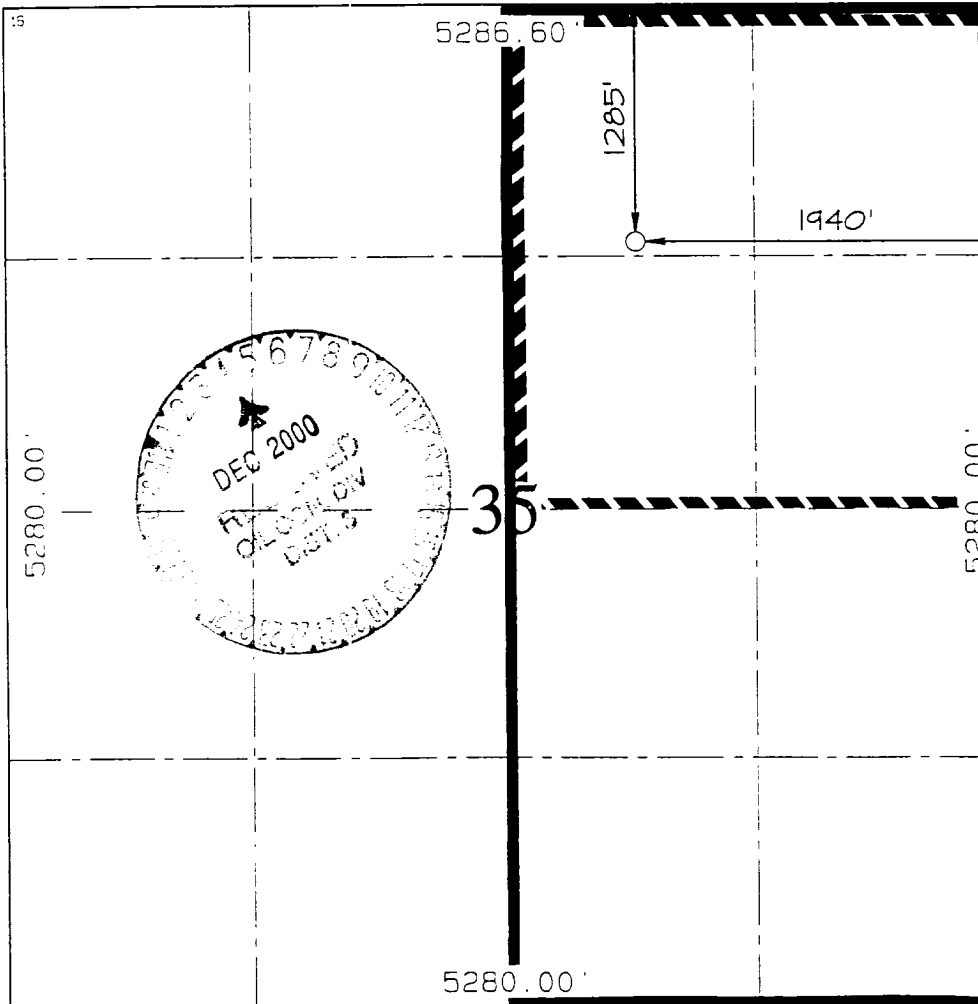
UL or lot no	Section	Township	Range	Lot Ion	Feet from the	North/South line	Feet from the	East/West line	County
8	35	27N	3W		1285	NORTH	1940	EAST	RIO ARriba

11 Bottom Hole Location If Different From Surface

UL or lot no	Section	Township	Range	Lot Ion	Feet from the	North/South line	Feet from the	East/West line	County

12 Dedicated Acres NE 160/320 EA	13 Joint or Infill	14 Consolidation Code	15 Order No.
-------------------------------------	--------------------	-----------------------	--------------

NO ALLOWABLE WILL BE ASSIGNED TO THIS COMPLETION UNTIL ALL INTERESTS HAVE BEEN CONSOLIDATED
OR A NON-STANDARD UNIT HAS BEEN APPROVED BY THE DIVISION



17 OPERATOR CERTIFICATION

I hereby certify that the information contained herein is true and complete to the best of my knowledge and belief.

Signature: Gary Brink

Printed Name: Gary Brink

Title: Production Superintendant

Date: 10/20/00

18 SURVEYOR CERTIFICATION

I hereby certify that the well location shown on this plat was plotted from field notes of actual surveys made by me or under my supervision and that the same is true and correct to the best of my belief.

JULY 6, 2000

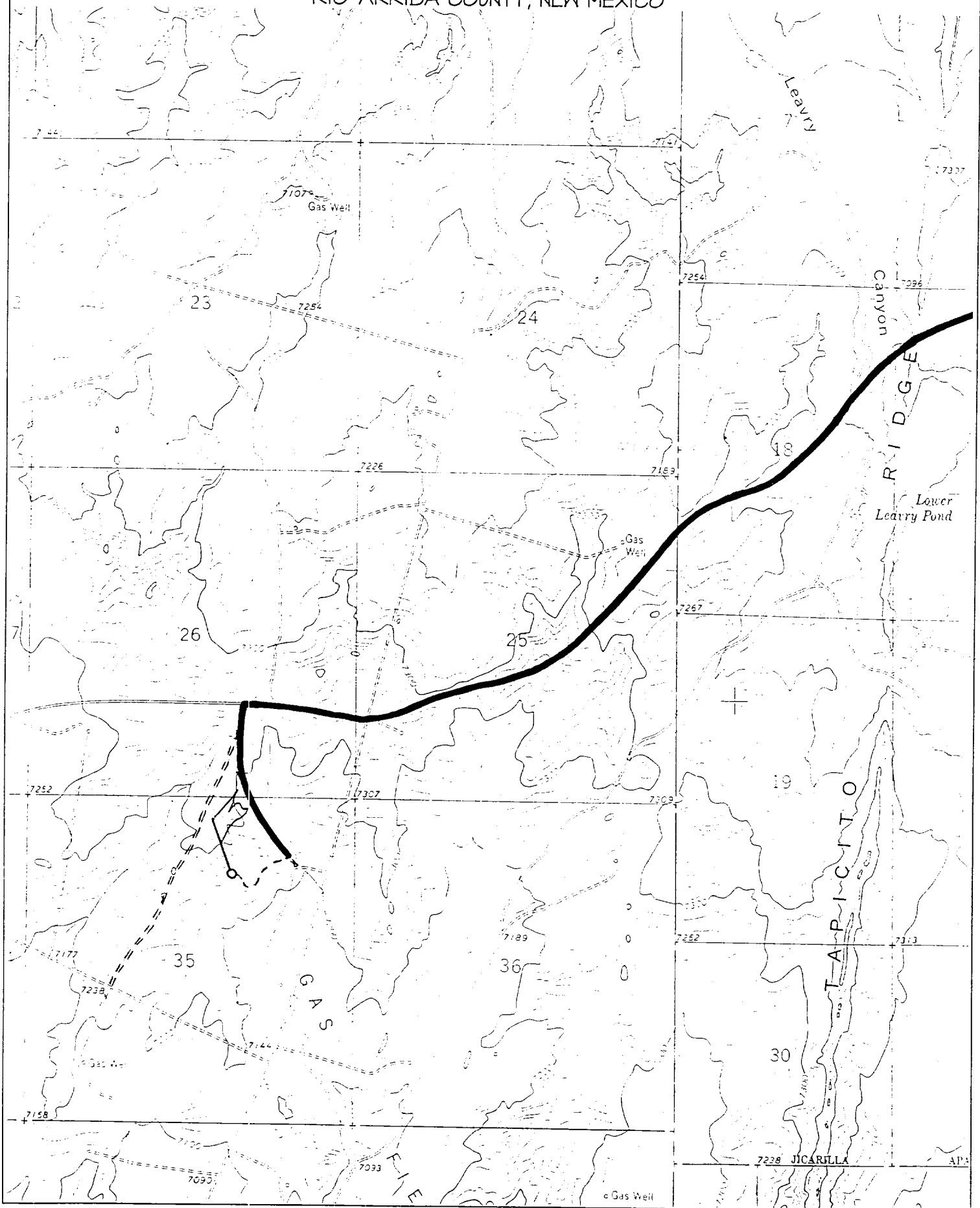
Date of Survey: JULY 6, 2000

Signature and Seal: Neale G. Edwards

Certificate: 6857

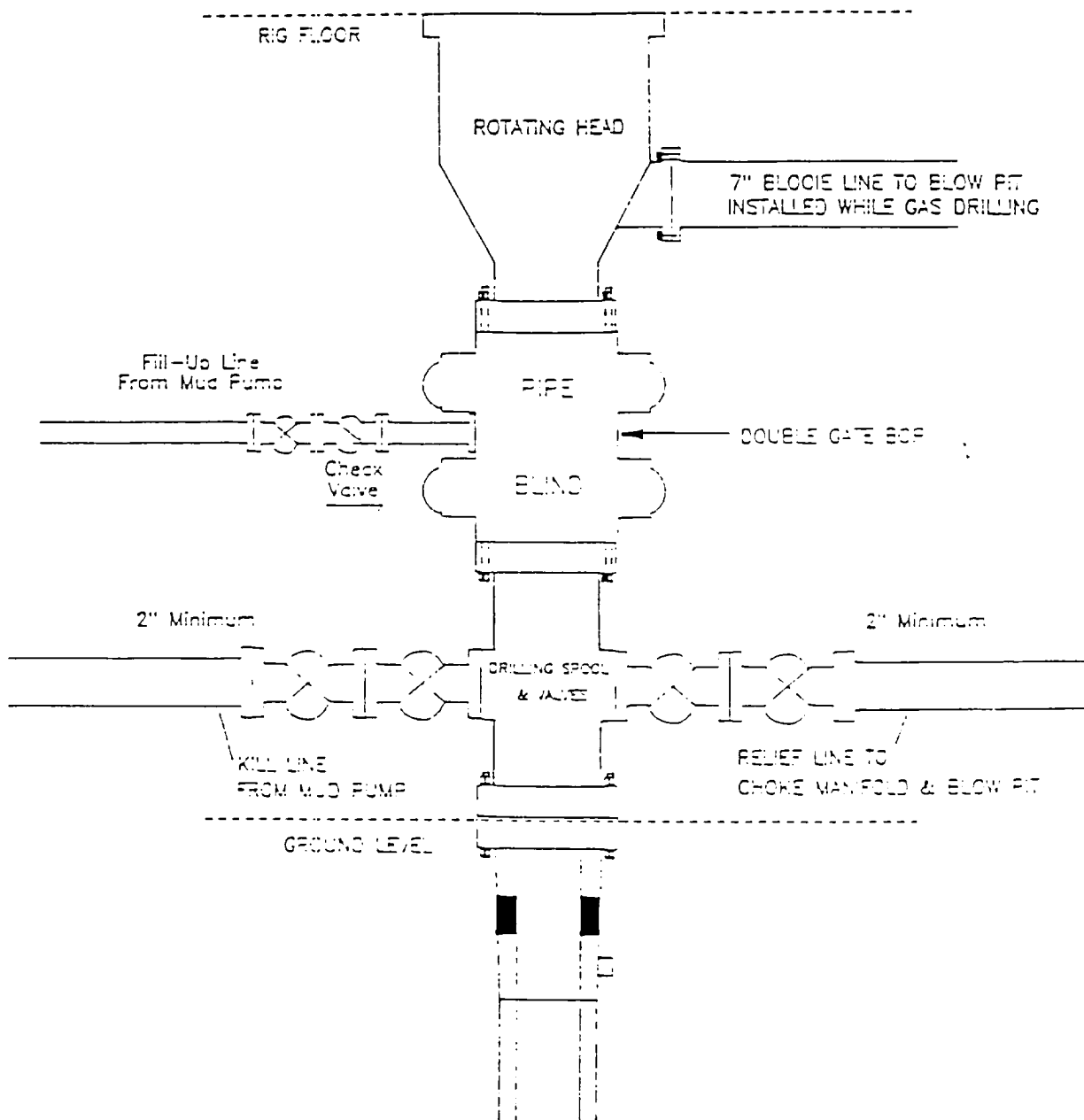
ENERGEN RESOURCES CORPORATION JICARILLA 95 #1C

1285' FNL & 1940' FEL, SECTION 35, T27N, R3W, N.M.P.M.
RIO ARriba COUNTY, NEW MEXICO



ENERGEN RESOURCES CORPORATION

Mesa Verde / Dakota Well BOP Configuration



Minimum BOP installation for a Mesa Verde well from Surface to Total Depth. 11" Bore, 2000psi minimum working pressure double gate BOP to be equipped with blind and pipe rams. A Schaffer Type 50 or equivalent rotating head to be installed on the top of the BOP. All equipment is 2000psi working pressure or greater.

Figure #1