

UNITED STATES
DEPARTMENT OF THE INTERIOR
BUREAU OF LAND MANAGEMENT

APPLICATION FOR PERMIT TO DRILL, DEEPEN, OR PLUG BACK

1a. Type of Work DRILL	5. Lease Number SF-079392 Unit Reporting Number
1b. Type of Well GAS	6. If Indian, All. or Tribe
2. Operator BURLINGTON RESOURCES Oil & Gas Company	7. Unit Agreement Name San Juan 27-5 Unit
3. Address & Phone No. of Operator PO Box 4289, Farmington, NM 87499 (505) 326-9700	8. Farm or Lease Name San Juan 27-5 Unit 9. Well Number 65R
4. Location of Well 1365' FNL, 1065' FWL Latitude 36° 34.6, Longitude 107° 23.2	10. Field, Pool, Wildcat Tapacito PicturedCliffs 11. Sec., Twn, Rge, Mer. (NMPM) Sec. 17, T-27-N, R-5-W API # 30-039-26593
14. Distance in Miles from Nearest Town 9 miles from Gobernador	12. County Rio Arriba 13. State NM
15. Distance from Proposed Location to Nearest Property or Lease Line 1065'	
16. Acres in Lease	17. Acres Assigned to Well 155.35 NW/4
18. Distance from Proposed Location to Nearest Well, Drlg, Compl, or Applied for on this Lease 75'	
19. Proposed Depth 3581'	20. Rotary or Cable Tools Rotary
21. Elevations (DF, FT, GR, Etc.) 6586' GR	22. Approx. Date Work will Start
23. Proposed Casing and Cementing Program See Operations Plan attached	
24. Authorized by: <u>[Signature]</u> Regulatory/Compliance Supervisor	Date <u>10-20-00</u>

PERMIT NO. _____ APPROVAL DATE _____
APPROVED BY /s/ Jim Lovato TITLE _____ DATE FEB - 5 2001

Archaeological Report to be submitted

Threatened and Endangered Species Report to be submitted

NOTE: This format is issued in lieu of U.S. BLM Form 3160-3

Title 18 U.S.C. Section 1001, makes it a crime for any person knowingly and willfully to make to any department or agency of the United States any false, fictitious or fraudulent statements or presentations as to any matter within its jurisdiction.

District I
PO Box 1980, Hobbs, NM 88241-1980

District II
PO Drawer 00, Artesia, NM 88211-0719

District III
1000 Rio Brazos Rd., Aztec, NM 87410

District IV
PO Box 2088, Santa Fe, NM 87504-2088

State of New Mexico
Energy, Minerals & Natural Resources Department

OIL CONSERVATION DIVISION
PO Box 2088
Santa Fe, NM 87504-2088

Form C-102
Revised February 21, 1994
Instructions on back
Submit to Appropriate District Office
State Lease - 4 Copies
Fee Lease - 3 Copies

☐ AMENDED REPORT

WELL LOCATION AND ACREAGE DEDICATION PLAT

*API Number 30-039- 26593		*Pool Code 85920	*Pool Name Tapacito Pictured Cliffs
*Property Code 7454	*Property Name SAN JUAN 27-5 UNIT		*Well Number 65R
*OGRID No. 14538	*Operator Name BURLINGTON RESOURCES OIL & GAS COMPANY		*Elevation 6586'

¹⁰ Surface Location

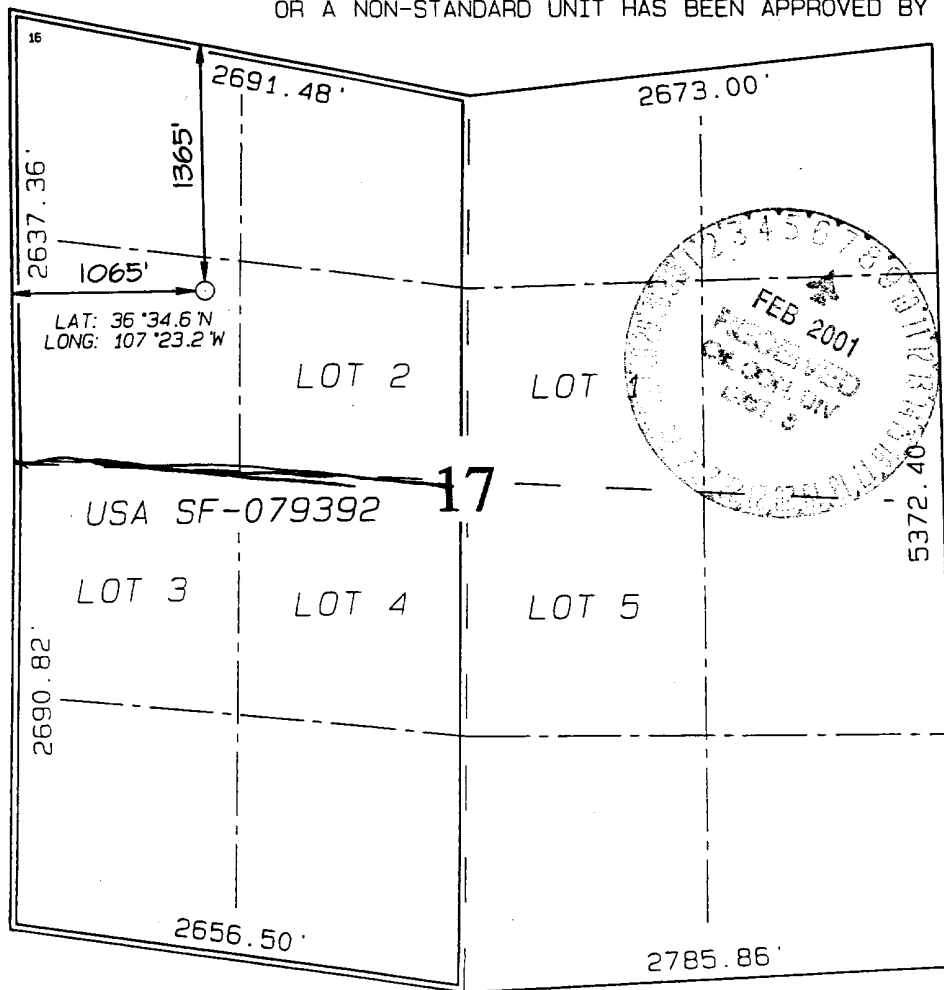
UL or lot no.	Section	Township	Range	Lot 10n	Feet from the	North/South line	Feet from the	East/West line	County
E	17	27N	5W		1365	NORTH	1065	WEST	RIO ARriba

¹¹ Bottom Hole Location If Different From Surface

UL or lot no.	Section	Township	Range	Lot 10n	Feet from the	North/South line	Feet from the	East/West line	County

¹² Dedicated Acres PC- 155.35 NW	¹³ Joint or Infill	¹⁴ Consolidation Code	¹⁵ Order No. 160 acres for density <i>dedication</i> purposes for the Pictured Cliffs
---	-------------------------------	----------------------------------	---

NO ALLOWABLE WILL BE ASSIGNED TO THIS COMPLETION UNTIL ALL INTERESTS HAVE BEEN CONSOLIDATED OR A NON-STANDARD UNIT HAS BEEN APPROVED BY THE DIVISION



¹⁷ OPERATOR CERTIFICATION

I hereby certify that the information contained herein is true and complete to the best of my knowledge and belief.

Signature
Peggy Cole

Printed Name
Peggy Cole

Regulatory Supervisor

Title

Date
10-20-00

Date

SURVEYOR CERTIFICATION

I hereby certify that the well location shown on this plat was plotted from field notes of actual surveys made by me or under my supervision and that the same is true and correct to the best of my belief.

SEPTEMBER 20, 2000

Date of Survey

Signature and Seal of Professional Surveyor

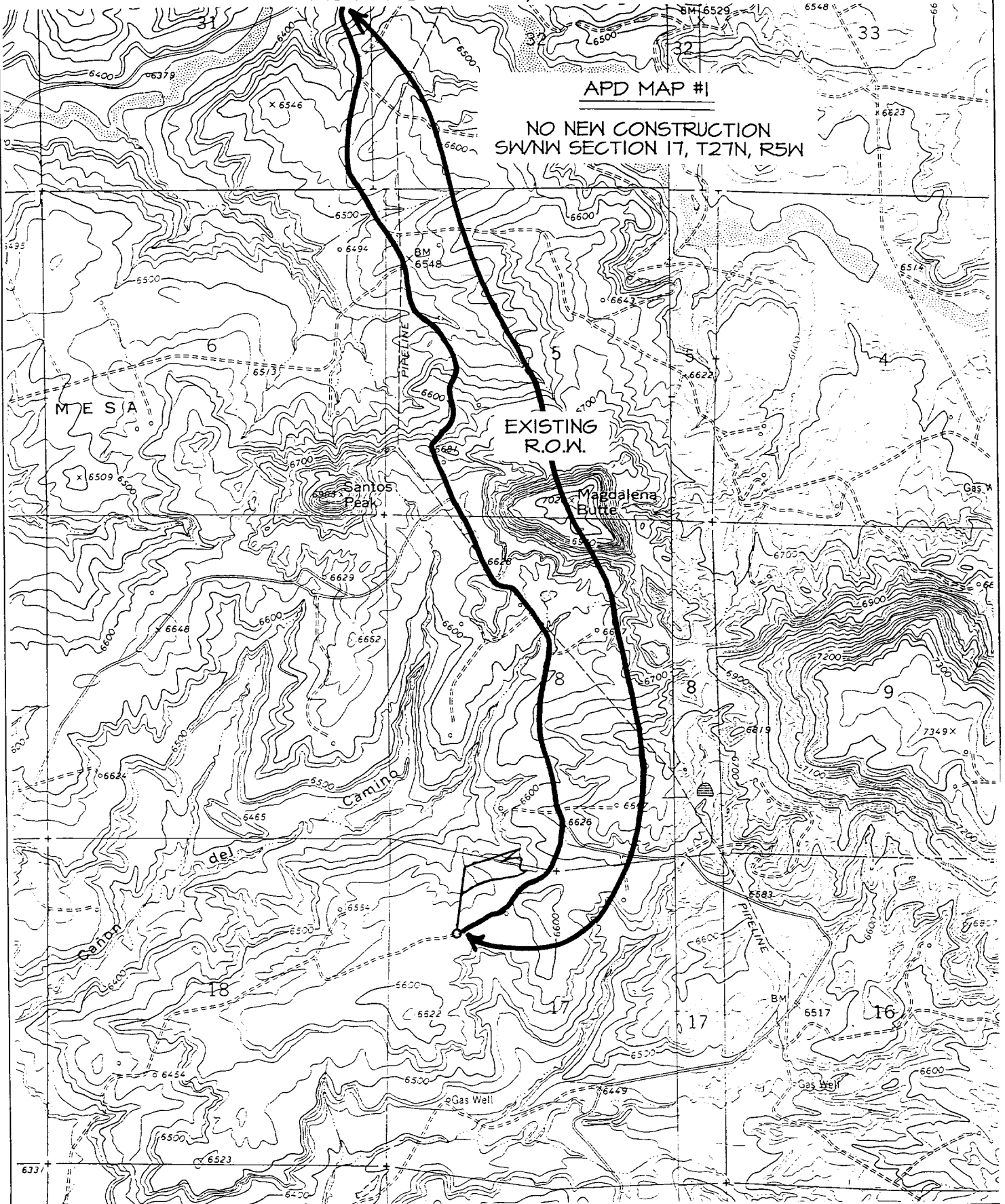
NEALE C. EDWARDS
NEW MEXICO
6857
Certificate Number 6857

BURLINGTON RESOURCES OIL & GAS COMPANY SAN JUAN 27-5 UNIT #65R

1365' FNL & 1065' FNL, SECTION 17, T27N, R5W, N.M.P.M.
RIO ARriba COUNTY, NEW MEXICO

APD MAP #1

NO NEW CONSTRUCTION
SWNW SECTION 17, T27N, R5W



OPERATIONS PLAN

Well Name: San Juan 27-5 Unit #65R
Location: 1365' FNL, 1065' FWL, Section 17, T-27-N, R-5-W
Rio Arriba County, New Mexico
Latitude 36° 34.6, Longitude 107° 23.2
Formation: Tapacito Pictured Cliffs
Elevation: 6586' GL

Formation:	Top	Bottom	Contents
Surface	San Jose	2716'	
Ojo Alamo	2716'	2875'	aquifer
Kirtland	2875'	2976'	gas
Fruitland	2976'	3381'	gas
Pictured Cliffs	3381'		gas
Total Depth	3581'		

Logging Program: Surface to TD - CBL-CCL-GR

Coring Program: None

Mud Program:

<u>Interval</u>	<u>Type</u>	<u>Weight</u>	<u>Vis.</u>	<u>Fluid Loss</u>
0- 200'	Spud	8.4-9.0	40-50	no control
200-3581'	FW	8.4-9.0	32-45	no control

Casing Program (as listed, equivalent, or better):

<u>Hole Size</u>	<u>Depth Interval</u>	<u>Csg. Size</u>	<u>Wt.</u>	<u>Grade</u>
8 3/4"	0 - 200'	7"	20.0#	J-55
6 1/4"	0 - 3581'	2 7/8"	6.5#	J-55

Float Equipment: 7" surface casing - saw tooth guide shoe.
Centralizers will be run in accordance with Onshore Order #2.

2 7/8" production casing - float shoe on bottom. Three centralizers run every other joint above shoe. Seven centralizers run every 3rd joint to the base of the Ojo Alamo @ 2875'. Two turbolizing type centralizers - one below and one into the base of the Ojo Alamo @ 2875'. Standard centralizers thereafter every fourth joint up to the base of the surface pipe.

Wellhead Equipment: 7" x 2 7/8" 2000 psi screw on independent wellhead.

Cementing:

7" surface casing - cement with 76 sx Class "B" cement with 1/4# flocele/sx and 3% calcium chloride (90 cu.ft. of slurry, 200% excess to circulate to surface). WOC 8 hrs. Test casing to 600 psi for 30 minutes.

2 7/8" production casing - Lead w/372 sx Class "B" w/3% sodium metasilicate, 1/2 pps Flocele and 10 pps gilsonite. Tail w/90 sx 50/50 Class "B" Poz w/2% gel, 1/4 pps Flocele, 5 pps gilsonite and 2% calcium chloride (1204 cu.ft. of slurry, 100% excess to circulate to surface). WOC 8 hrs. If cement does not circulate to surface, a CBL will be run during completion to determine TOC.

BOP and tests:

Surface to TD - 11" 2000 psi (minimum double gate BOP stack (Reference Figure #1 and #2). Prior to drilling out surface casing, test rams to 600 psi/30 min.

Completion - 6" 2000 psi (minimum) double gate BOP stack (Reference Figure #2). Prior to completion operations, test rams and casing to 2000 psi/15 min.

From surface to TD - choke manifold (Reference Figure #3).

Pipe rams will be actuated to least once each day and blind rams actuated once each trip to test proper functioning. An upper kelly cock valve with handle and drill string safety valves to fit each drill string will be maintained and available on the rig floor.

Additional information:

- * The Pictured Cliffs formation will be completed.
- * Anticipated pore pressure for the Pictured Cliffs is 500 psi.
- * This gas is dedicated.
- * The west half of section 17 is dedicated to the Pictured Cliffs.

Eric J. Giles
Drilling Engineer

10/23/00
Date