

UNITED STATES  
DEPARTMENT OF THE INTERIOR  
BUREAU OF LAND MANAGEMENT

APPLICATION FOR PERMIT TO DRILL, DEEPEN, OR PLUG BACK

1a. Type of Work  
DRILL

1b. Type of Well  
GAS

2. Operator  
**BURLINGTON RESOURCES** Oil & Gas Company

3. Address & Phone No. of Operator  
PO Box 4289, Farmington, NM 89403  
(505) 326-9700

4. Location of Well  
1580' FSL, 985' FEL  
Latitude 36° 35.2, Longitude 107° 23.7

5. Lease Number  
SF-079391  
Unit Reporting Number

6. If Indian, All. or Tribe

7. Unit Agreement Name  
San Juan 27-5 Unit

8. Farm or Lease Name  
San Juan 27-5 Unit

9. Well Number  
175R

10. Field, Pool, Wildcat  
So Blanco Pict. Cliffs

11. Sec., Twn, Rge, Mer. (NMPM)  
I Sec. 7, T-27-N, R-5-W  
API # 30-039-26610

12. County  
Rio Arriba

13. State  
NM

14. Distance in Miles from Nearest Town  
9 miles from Gobernador

15. Distance from Proposed Location to Nearest Property or Lease Line  
985'

16. Acres in Lease

17. Acres Assigned to Well  
~~320-572~~  
1605E/4

18. Distance from Proposed Location to Nearest Well, Drig, Compl, or Applied for on this Lease  
75'

19. Proposed Depth  
3578' - This action is subject to technical and procedural review pursuant to 43 CFR 3165.3 and appeal pursuant to 43 CFR 3165.4.

20. Rotary or Cable Tools  
Rotary

21. Elevations (DF, FT, GR, Etc.)  
6607' GR

22. Approx. Date Work will Start

23. Proposed Casing and Cementing Program  
See Operations Plan attached

24. Authorized by: [Signature]  
Regulatory/Compliance Supervisor

DRILLING AND OTHER ACTIVITIES AUTHORIZED ARE  
SUBJECT TO THE RULES WITH ATTACHED  
"GENERAL REQUIREMENTS"

10-20-00  
Date

PERMIT NO. \_\_\_\_\_ APPROVAL DATE \_\_\_\_\_  
APPROVED BY /s/ Jim Lovato TITLE \_\_\_\_\_ DATE FEB - 1 2001

Archaeological Report to be submitted

Threatened and Endangered Species Report to be submitted

NOTE: This format is issued in lieu of U.S. BLM Form 3160-3

Title 18 U.S.C. Section 1001, makes it a crime for any person knowingly and willfully to make to any department or agency of the United States any false, fictitious or fraudulent statements or presentations as to any matter within its jurisdiction.

PMOCB

District I  
PO Box 1980, Hobbs, NM 88241-1980

District II  
PO Drawer DD, Artesia, NM 88211-0719

District III  
1000 Rio Brazos Rd., Aztec, NM 87410

District IV  
PO Box 2088, Santa Fe, NM 87504-2088

State of New Mexico  
Energy, Minerals & Natural Resources Department

OIL CONSERVATION DIVISION  
PO Box 2088  
Santa Fe, NM 87504-2088

Form C-102  
Revised February 21, 1994  
Instructions on back  
Submit to Appropriate District Office  
State Lease - 4 Copies  
Fee Lease - 3 Copies

070 FARMINGTON, NM AMENDED REPORT

### WELL LOCATION AND ACREAGE DEDICATION PLAT

*API Number 30-039-26610		*Pool Code 72439	*Pool Name South Blanco Pictured Cliffs
*Property Code 7454	*Property Name SAN JUAN 27-5 UNIT		*Well Number 175R
*GRID No. 14538	*Operator Name BURLINGTON RESOURCES OIL & GAS COMPANY		*Elevation 6607'

#### <sup>10</sup> Surface Location

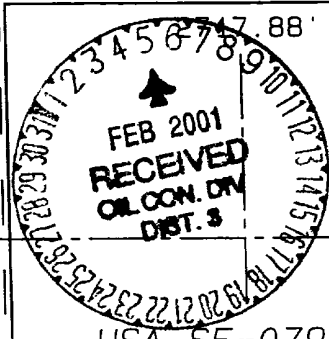
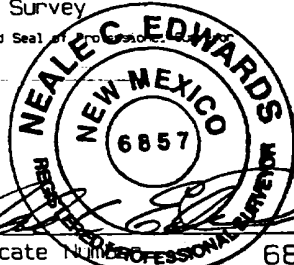
UL or lot no.	Section	Township	Range	Lot Idn	Feet from the	North/South line	Feet from the	East/West line	County
I	7	27N	5W		1580	SOUTH	985	EAST	RIO ARriba

#### <sup>11</sup> Bottom Hole Location If Different From Surface

UL or lot no.	Section	Township	Range	Lot Idn	Feet from the	North/South line	Feet from the	East/West line	County

<sup>12</sup> Dedicated Acres SE 1/4 160 PC-160	<sup>13</sup> Joint or Infill	<sup>14</sup> Consolidation Code	<sup>15</sup> Order No. 160 acres for density purposes for the Pictured Cliffs 320 acres for revenue purposes for the Pictured Cliffs
---	-------------------------------	----------------------------------	---

NO ALLOWABLE WILL BE ASSIGNED TO THIS COMPLETION UNTIL ALL INTERESTS HAVE BEEN CONSOLIDATED OR A NON-STANDARD UNIT HAS BEEN APPROVED BY THE DIVISION

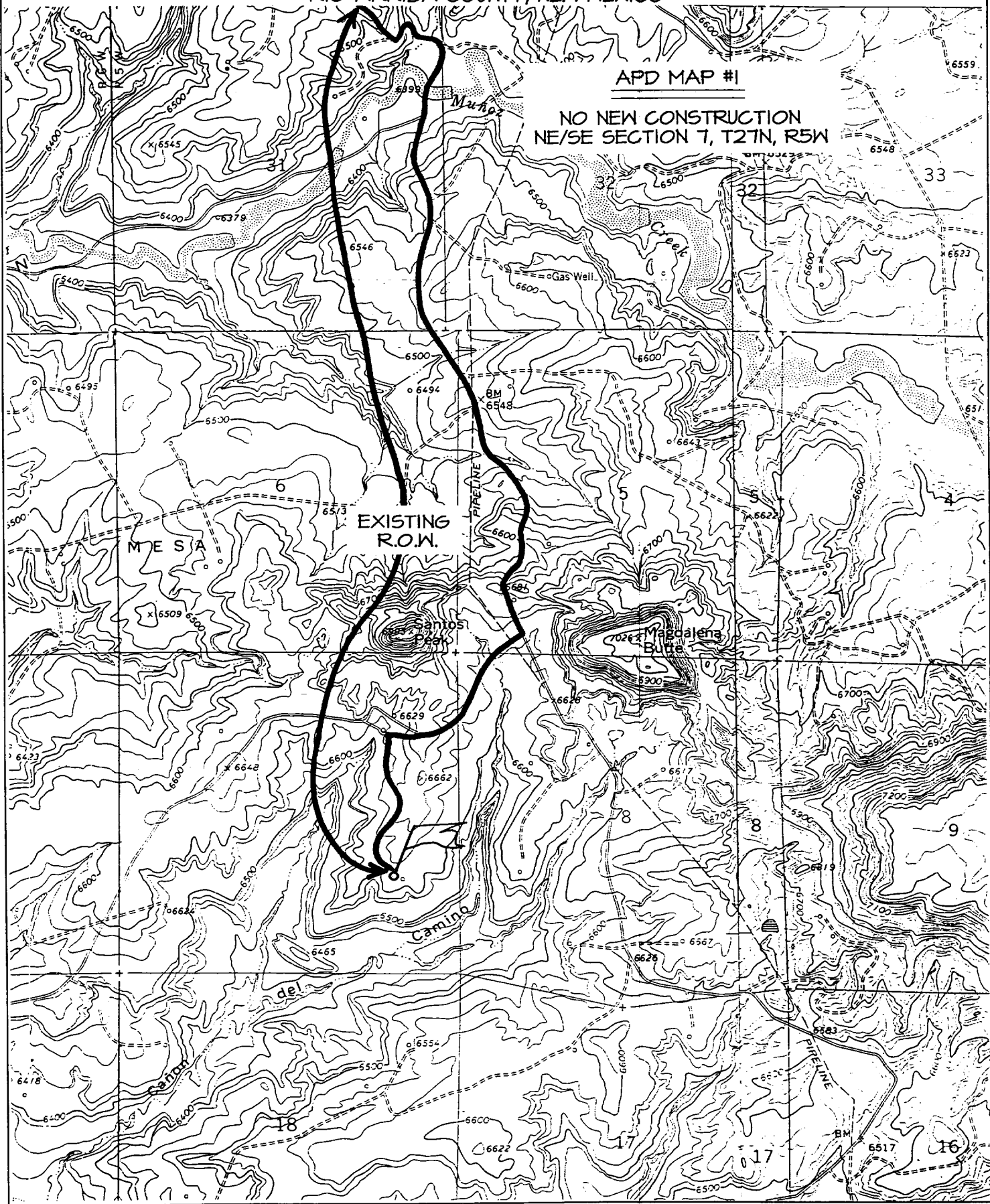
<sup>16</sup> 1380.06' LOT 1 5263.50' LOT 2 LOT 3 LOT 4 1387.98'	1358.94'		2647.26'	<sup>17</sup> OPERATOR CERTIFICATION I hereby certify that the information contained herein is true and complete to the best of my knowledge and belief.  Signature: <u>Peggy Cole</u> Printed Name: <u>Peggy Cole</u> Regulatory Supervisor Title: <u>10-20-00</u> Date: <u>10-20-00</u>	
				<sup>18</sup> SURVEYOR CERTIFICATION I hereby certify that the well location shown on this plat was plotted from field notes of actual surveys made by me or under my supervision, and that the same is true and correct to the best of my belief.  SEPTEMBER 20, 2000 Date of Survey Signature and Seal of Professional Surveyor:  Certificate Number: <u>6857</u>	
				LAT: 36°35.2' N LONG: 107°23.7' W 985' 1580'	
				2618.88'	

BURLINGTON RESOURCES OIL & GAS COMPANY SAN JUAN 27-5 UNIT #175R

1580' FSL & 985' FEL, SECTION 7, T27N, R5W, N.M.P.M.  
RIO ARriba COUNTY, NEW MEXICO

APD MAP #1

NO NEW CONSTRUCTION  
NE/SE SECTION 7, T27N, R5W



### OPERATIONS PLAN

**Well Name:** San Juan 27-5 Unit #175R  
**Location:** 1580' FSL, 985' FEL, Section 7, T-27-N, R-5-W  
Rio Arriba County, New Mexico  
Latitude 36° 35.2, Longitude 107° 23.7  
**Formation:** South Blanco Pictured Cliffs  
**Elevation:** 6607' GL

Formation:	Top	Bottom	Contents
Surface	San Jose	2660'	
Ojo Alamo	2660'	2888'	aquifer
Kirtland	2888'	2965'	gas
Fruitland	2965'	3378'	gas
Pictured Cliffs	3378'		gas
Total Depth	3578' —		

**Logging Program:** Surface to TD - CBL-CCL-GR

**Coring Program:** None

**Mud Program:**

Interval	Type	Weight	Vis.	Fluid Loss
0- 200'	Spud	8.4-9.0	40-50	no control
200-3578'	FW	8.4-9.0	32-45	no control

**Casing Program (as listed, equivalent, or better):**

Hole Size	Depth Interval	Csg. Size	Wt.	Grade
8 3/4"	0 - 200'	7"	20.0#	J-55
6 1/4"	0 - 3578' —	2 7/8"	6.5#	J-55

**Float Equipment:** 7" surface casing - saw tooth guide shoe.  
Centralizers will be run in accordance with Onshore Order #2.

2 7/8" production casing - float shoe on bottom. Three centralizers run every other joint above shoe. Seven centralizers run every 3rd joint to the base of the Ojo Alamo @ 2888'. Two turbolizing type centralizers - one below and one into the base of the Ojo Alamo @ 2888'. Standard centralizers thereafter every fourth joint up to the base of the surface pipe.

**Wellhead Equipment:** 7" x 2 7/8" 2000 psi screw on independent wellhead.

**Cementing:**

7" surface casing - cement with 76 sx Class "B" cement with 1/4# flocele/sx and 3% calcium chloride (90 cu.ft. of slurry, 200% excess to circulate to surface). WOC 8 hrs. Test casing to 600 psi for 30 minutes.

2 7/8" production casing - Lead w/372 sx Class "B" w/3% sodium metasilicate, 1/2 pps Flocele and 10 pps gilsonite. Tail w/90 sx 50/50 Class "B" Poz w/2% gel, 1/4 pps Flocele, 5 pps gilsonite and 2% calcium chloride (1203 cu.ft. of slurry, 100% excess to circulate to surface). WOC 8 hrs. If cement does not circulate to surface, a CBL will be run during completion to determine TOC.

San Juan 27-5 Unit #175R

**BOP and tests:**

Surface to TD - 11" 2000 psi (minimum double gate BOP stack (Reference Figure #1 and #2). Prior to drilling out surface casing, test rams to 600 psi/30 min.

Completion - 6" 2000 psi (minimum) double gate BOP stack (Reference Figure #2). Prior to completion operations, test rams and casing to 2000 psi/15 min.

From surface to TD - choke manifold (Reference Figure #3).

Pipe rams will be actuated to least once each day and blind rams actuated once each trip to test proper functioning. An upper kelly cock valve with handle and drill string safety valves to fit each drill string will be maintained and available on the rig floor.

**Additional information:**

- \* The Pictured Cliffs formation will be completed.
- \* Anticipated pore pressure for the Pictured Cliffs is 500 psi.
- \* This gas is dedicated.
- \* The east half of section 7 is dedicated to the Pictured Cliffs.

Eric J. Diles  
Drilling Engineer

10/23/00  
Date