

UNITED STATES
DEPARTMENT OF THE INTERIOR
BUREAU OF LAND MANAGEMENT

APPLICATION FOR PERMIT TO DRILL, DEEPEN, OR PLUG BACK

1a. Type of Work
DRILL

5. Lease Number
SF-079403
Unit Reporting Number

1b. Type of Well
GAS

6. If Indian, All. or Tribe

2. Operator
BURLINGTON RESOURCES Oil & Gas Company

7. Unit Agreement Name
San Juan 27-5 Unit

3. Address & Phone No. of Operator
PO Box 4289, Farmington, NM 87499
(505) 326-9700

8. Farm or Lease Name
San Juan 27-5 Unit

9. Well Number
95R

4. Location of Well
1895' FSL, 810' FWL
Latitude 36° 34.3, Longitude 107° 21.1

10. Field, Pool, Wildcat
Tapacito Pict. Cliffs

11. Sec., Twn, Rge, Mer. (NMFM)
L Sec. 15, T-27-N, R-5-W
API # 30-039- 26626

14. Distance in Miles from Nearest Town
12 miles from Gobernador

12. County
Rio Arriba

13. State
NM

15. Distance from Proposed Location to Nearest Property or Lease Line
810'

16. Acres in Lease

17. Acres Assigned to Well
~~328.772~~ 160 SW/4

18. Distance from Proposed Location to Nearest Well, Drig, Compl, or Applied for on this Lease
75'

19. Proposed Depth
3702'

20. Rotary or Cable Tools
Rotary

21. Elevations (DF, FT, GR, Etc.)
6700' GR

22. Approx. Date Work will Start

23. Proposed Casing and Cementing Program
See Operations Plan attached

24. Authorized by: [Signature]
Regulatory/Compliance Supervisor

Date 10-20-00

DRILLING OPERATIONS AUTHORIZED ARE
SUBJECT TO COMPLIANCE WITH ATTACHED
"GENERAL REQUIREMENTS"

PERMIT NO. _____ APPROVAL DATE _____

APPROVED BY /s/ Jim Lovato TITLE _____ DATE FEB - 5 2001

Archaeological Report to be submitted

Threatened and Endangered Species Report to be submitted

NOTE: This format is issued in lieu of U.S. BLM Form 3160-3

Title 18 U.S.C. Section 1001, makes it a crime for any person knowingly and willfully to make to any department or agency of the United States any false, fictitious or fraudulent statements or presentations as to any matter within its jurisdiction.

NMOCD

District I
PO Box 1980, Hobbs, NM 88241-1980

District II
PO Drawer DD, Artesia, NM 88211-0719

District III
1000 Rio Brazos Rd., Aztec, NM 87410

District IV
PO Box 206E, Santa Fe, NM 87504-2088

State of New Mexico
Energy, Minerals & Natural Resources Department

OIL CONSERVATION DIVISION
PO Box 2088
Santa Fe, NM 87504-2088

Form C-102
Revised February 21, 1994
Instructions on back
Submit to Appropriate District Office
State Lease - 4 Copies
Fee Lease - 3 Copies

AMENDED REPORT

WELL LOCATION AND ACREAGE DEDICATION PLAT

*API Number 30-039- <u>26626</u>		*Pool Code 85920	*Pool Name Tapacito Pictured Cliffs
*Property Code 7454	*Property Name SAN JUAN 27-5 UNIT		*Well Number 95R
*OGRID No. 14538	*Operator Name EURLINGTON RESOURCES OIL & GAS COMPANY		*Elevation 6700'

10 Surface Location

U. or lot no. L	Section 15	Township 27N	Range 5W	Lot 10n	Feet from the 1895	North/South line SOUTH	Feet from the 810	East/West line WEST	County RIO ARriba
--------------------	---------------	-----------------	-------------	---------	-----------------------	---------------------------	----------------------	------------------------	----------------------

11 Bottom Hole Location If Different From Surface

U. or lot no.	Section	Township	Range	Lot 10n	Feet from the	North/South line	Feet from the	East/West line	County
---------------	---------	----------	-------	---------	---------------	------------------	---------------	----------------	--------

12 Dedicated Acres SWA 160 PC- 320	13 Joint or Infill	14 Consolidation Code	15 Order No. <u>dedication</u> 160 acres for density purposes for the Pictured Cliffs 320 acres for revenue purposes for the Pictured Cliffs
---	--------------------	-----------------------	--

NO ALLOWABLE WILL BE ASSIGNED TO THIS COMPLETION UNTIL ALL INTERESTS HAVE BEEN CONSOLIDATED OR A NON-STANDARD UNIT HAS BEEN APPROVED BY THE DIVISION

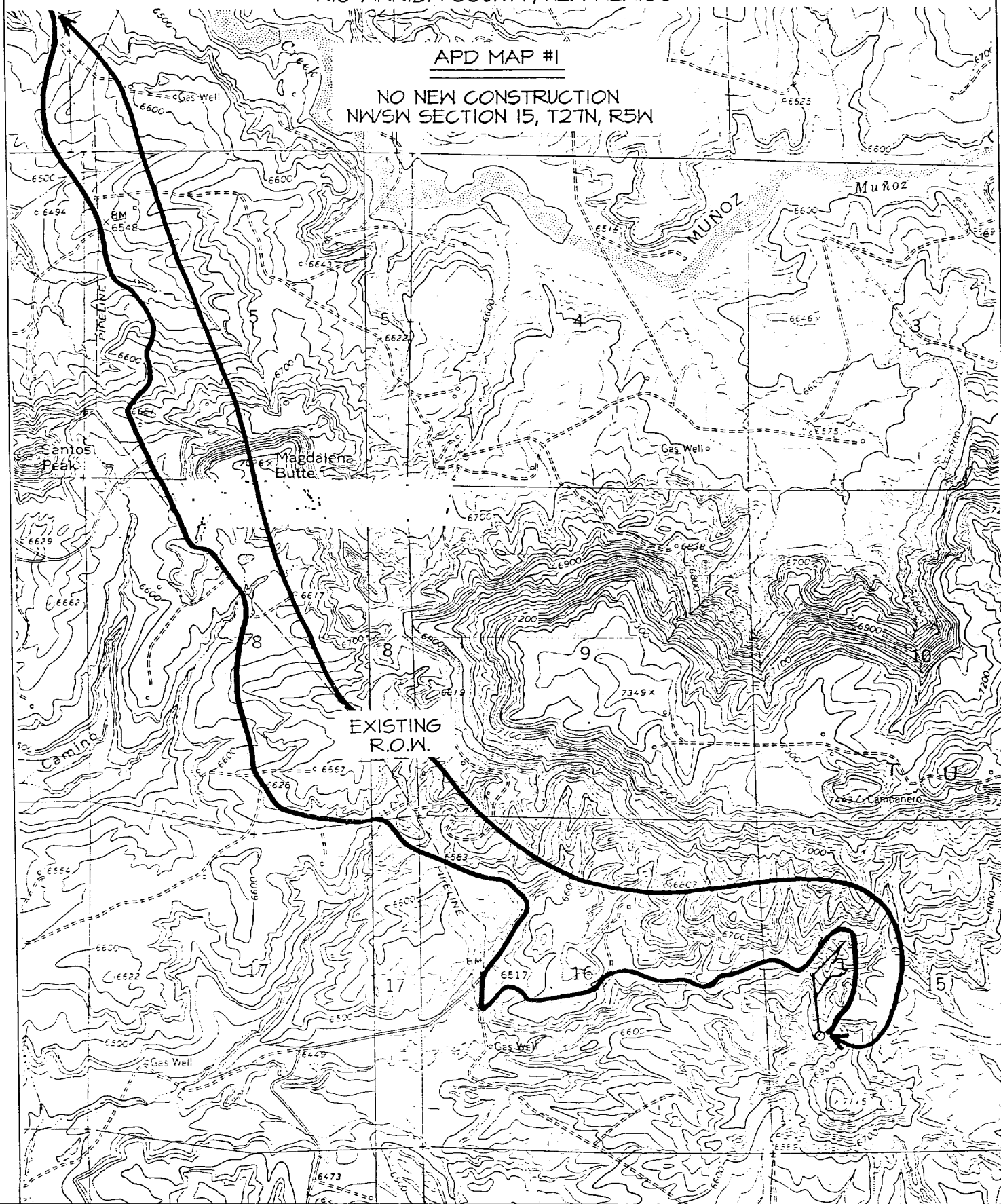
<div>16</div> <div>5346.66'</div> <div>USA SF-079492-A</div> <div>5410.02'</div> <div>LAT: 36°34.3'N LONG: 107°21.1'W</div> <div>810'</div> <div>95R</div> <div>USA SF-079403</div> <div>1895'</div> <div>5181.66'</div>	<div>17 OPERATOR CERTIFICATION</div> <div>I hereby certify that the information contained herein is true and complete to the best of my knowledge and belief.</div> <div><u>Peggy Cole</u> Signature</div> <div><u>Peggy Cole</u> Printed Name</div> <div><u>Regulatory Supervisor</u> Title</div> <div><u>10-20-00</u> Date</div>
	<div>18 SURVEYOR CERTIFICATION</div> <div>I hereby certify that the well location shown on this plat was plotted from field notes of actual surveys made by me or under my supervision and that the same is true and correct to the best of my belief.</div> <div><u>SEPTEMBER 14, 2000</u> Date of Survey</div> <div><u>NEALE C. EDWARDS</u> Signature and Seal of Professional Surveyor</div> <div><u>6857</u> Certificate Number</div>

EURLINGTON RESOURCES OIL & GAS COMPANY SAN JUAN 27-5 UNIT #95R

1895' FSL & 810' FWL, SECTION 15, T27N, R5W, N.M.P.M.
RIO ARriba COUNTY, NEW MEXICO

APD MAP #1

NO NEW CONSTRUCTION
NWSW SECTION 15, T27N, R5W



OPERATIONS PLAN

Well Name: San Juan 27-5 Unit #95R
Location: 1895' FSL, 810' FWL, Section 15, T-27-N, R-5-W
Rio Arriba County, New Mexico
Latitude 36° 34.3, Longitude 107° 21.1
Formation: Tapacito Pictured Cliffs
Elevation: 6700' GL

Formation:	Top	Bottom	Contents
Surface	San Jose	2912'	
Ojo Alamo	2912'	3032'	aquifer
Kirtland	3032'	3112'	gas
Fruitland	3112'	3502'	gas
Pictured Cliffs	3502'		gas
Total Depth	3702'		

Logging Program: Surface to TD - CBL-CCL-GR

Coring Program: None

Mud Program:

<u>Interval</u>	<u>Type</u>	<u>Weight</u>	<u>Vis.</u>	<u>Fluid Loss</u>
0- 200'	Spud	8.4-9.0	40-50	no control
200-3702'	FW	8.4-9.0	32-45	no control

Casing Program (as listed, equivalent, or better):

<u>Hole Size</u>	<u>Depth Interval</u>	<u>Csg. Size</u>	<u>Wt.</u>	<u>Grade</u>
8 3/4"	0 - 200'	7"	20.0#	J-55
6 1/4"	0 - 3702'	2 7/8"	6.5#	J-55

Float Equipment: 7" surface casing - saw tooth guide shoe.
Centralizers will be run in accordance with Onshore Order #2.

2 7/8" production casing - float shoe on bottom. Three centralizers run every other joint above shoe. Seven centralizers run every 3rd joint to the base of the Ojo Alamo @ 3032'. Two turbolizing type centralizers - one below and one into the base of the Ojo Alamo @ 3032'. Standard centralizers thereafter every fourth joint up to the base of the surface pipe.

Wellhead Equipment: 7" x 2 7/8" 2000 psi screw on independent wellhead.

Cementing:

7" surface casing - cement with 76 sx Class "B" cement with 1/4# flocele/sx and 3% calcium chloride (90 cu.ft. of slurry, 200% excess to circulate to surface). WOC 8 hrs. Test casing to 600 psi for 30 minutes.

2 7/8" production casing - Lead w/386 sx Class "B" w/3% sodium metasilicate, 1/2 pps Flocele and 10 pps gilsonite. Tail w/90 sx 50/50 Class "B" Poz w/2% gel, 1/4 pps Flocele, 5 pps gilsonite and 2% calcium chloride (1244 cu.ft. of slurry, 100% excess to circulate to surface). WOC 8 hrs. If cement does not circulate to surface, a CBL will be run during completion to determine TOC.

BOP and tests:

Surface to TD - 11" 2000 psi (minimum double gate BOP stack (Reference Figure #1 and #2). Prior to drilling out surface casing, test rams to 600 psi/30 min.

Completion - 6" 2000 psi (minimum) double gate BOP stack (Reference Figure #2). Prior to completion operations, test rams and casing to 2000 psi/15 min.

From surface to TD - choke manifold (Reference Figure #3).

Pipe rams will be actuated to least once each day and blind rams actuated once each trip to test proper functioning. An upper kelly cock valve with handle and drill string safety valves to fit each drill string will be maintained and available on the rig floor.

Additional information:

- * The Pictured Cliffs formation will be completed.
- * Anticipated pore pressure for the Pictured Cliffs is 500 psi.
- * This gas is dedicated.
- * The west half of section 15 is dedicated to the Pictured Cliffs.

Eric J. Giles
Drilling Engineer

10/23/00
Date

Deviation Report

Name of Company	Address	
Burlington Resources Oil & Gas Company	P.O. Box 4289, Farmington, NM 87499	
Lease Name and Number	Unit Letter	Sec. Twn. Rge.
SAN JUAN 27-5 UNIT #95R	-1895 FSL -810 FWL	15-027N-005W
Pool and Formation	County	State
Tapacito Pictured Cliffs	RIO ARRIBA	NEW MEXICO

<u>Depth (ft)</u>	<u>Deviation (degrees)</u>
325	1.00
800	2.00
1,050	2.00
1,550	1.00
1,800	2.00
2,050	2.00
2,550	2.00
2,800	2.00
3,050	2.00
3,300	2.00
3,580	1.00
3,759	1.00

Air Hammer Used? YES/ NO

I, the undersigned, certify that I, acting in my capacity as Petroleum Engineer for Burlington Resources Oil & Gas Company, am authorized by said Company to make this report; and that this report was prepared under my supervision and directions, and that the facts stated herein are true to the best of my knowledge and belief.

En. J. Giles

Subscribed and sworn to before me this 10th day of July, 2001.

Nancy Olthmans

Notary Public in and for San Juan County, New Mexico
My commission expires September 15, 2004.

