

UNITED STATES
DEPARTMENT OF THE INTERIOR
BUREAU OF LAND MANAGEMENT

APPLICATION FOR PERMIT TO DRILL, DEEPEN, OR PLUG BACK

2001 FEB 12 PM 3:09

1a. Type of Work DRILL	5. Lease Number NM-93252 Unit Reporting Number
1b. Type of Well GAS	6. If Indian, All. or Tribe
2. Operator BURLINGTON RESOURCES Oil & Gas Company	7. Unit Agreement Name
3. Address & Phone No. of Operator PO Box 4289, Farmington, NM 87499 (505) 326-9700	8. Farm or Lease Name Sooner 9. Well Number 1
4. Location of Well 1530' FNL, 1565' FWL, Latitude 36° 28.5, Longitude 107° 35.1	10. Field, Pool, Wildcat Basin Dakota 11. Sec., Twn, Rge, Mer. (NMPM) F Sec. 21, T-26-N, R-7-W AP# 30-039-26665
14. Distance in Miles from Nearest Town 44.5 miles from Bloomfield	12. County Rio Arriba 13. State NM
15. Distance from Proposed Location to Nearest Property or Lease Line 1530'	17. Acres Assigned to Well 320 N/2
16. Acres in Lease	
18. Distance from Proposed Location to Nearest Well, Drig, Compl, or Applied for on this Lease 2200'	
19. Proposed Depth 7700' - DRILLING OPERATIONS AUTHORIZED ARE SUBJECT TO COMPLIANCE WITH ATTACHED "GENERAL REQUIREMENTS"	20. Rotary or Cable Tools Rotary
21. Elevations (DF, FT, GR, Etc.) 7000' GR -	22. Approx. Date Work will Start
23. Proposed Casing and Cementing Program See Operations Plan attached	This action is subject to internal and procedural review pursuant to 43 CFR 3165.3 and appeal pursuant to 43 CFR 3165.4.
24. Authorized by: <i>[Signature]</i> Regulatory/Compliance Supervisor	12-12-00 Date

PERMIT NO. _____ APPROVAL DATE _____
APPROVED BY /s/ Joel Farrell TITLE _____ DATE MAR 28

Archaeological Report to be submitted

Threatened and Endangered Species Report to be submitted

NOTE: This format is issued in lieu of U.S. BLM Form 3160-3

Title 18 U.S.C. Section 1001, makes it a crime for any person knowingly and willfully to make to any department or agency of the United States any false, fictitious or fraudulent statements or presentations as to any matter within its jurisdiction.

NMOC

DISTRICT I
P.O. Box 1980, Hobbs, N.M. 88241-1980

DISTRICT II
P.O. Drawer DD, Artesia, N.M. 88211-0719

DISTRICT III
1000 Rio Brazos Rd., Aztec, N.M. 87410

DISTRICT IV
PO Box 2088, Santa Fe, NM 87504-2088

State of New Mexico
Energy, Minerals & Natural Resources Department

OIL CONSERVATION DIVISION

P.O. Box 2088
Santa Fe, NM 87504-2088

Form C-102
Revised February 21, 1994
Instructions on back
Submit to Appropriate District Office
State Lease - 4 Copies
Fee Lease - 3 Copies

☐ AMENDED REPORT

WELL LOCATION AND ACREAGE DEDICATION PLAT

¹ API Number 30-045-26665		² Pool Code 71599	³ Pool Name Basin Dakota	
⁴ Property Code		⁵ Property Name SOONER		⁶ Well Number 1
⁷ GRID No. 14538		⁸ Operator Name BURLINGTON RESOURCES OIL & GAS, INC.		⁹ Elevation 7000'

¹⁰ Surface Location

UL or lot no.	Section	Township	Range	Lot Idn	Feet from the	North/South line	Feet from the	East/West line	County
F	21	26-N	7-W		1530'	NORTH	1565'	WEST	RIO ARriba

¹¹ Bottom Hole Location If Different From Surface

UL or lot no.	Section	Township	Range	Lot Idn	Feet from the	North/South line	Feet from the	East/West line	County
¹² Dedicated Acres N/320					¹³ Joint or Infill		¹⁴ Consolidation Code		¹⁵ Order No.

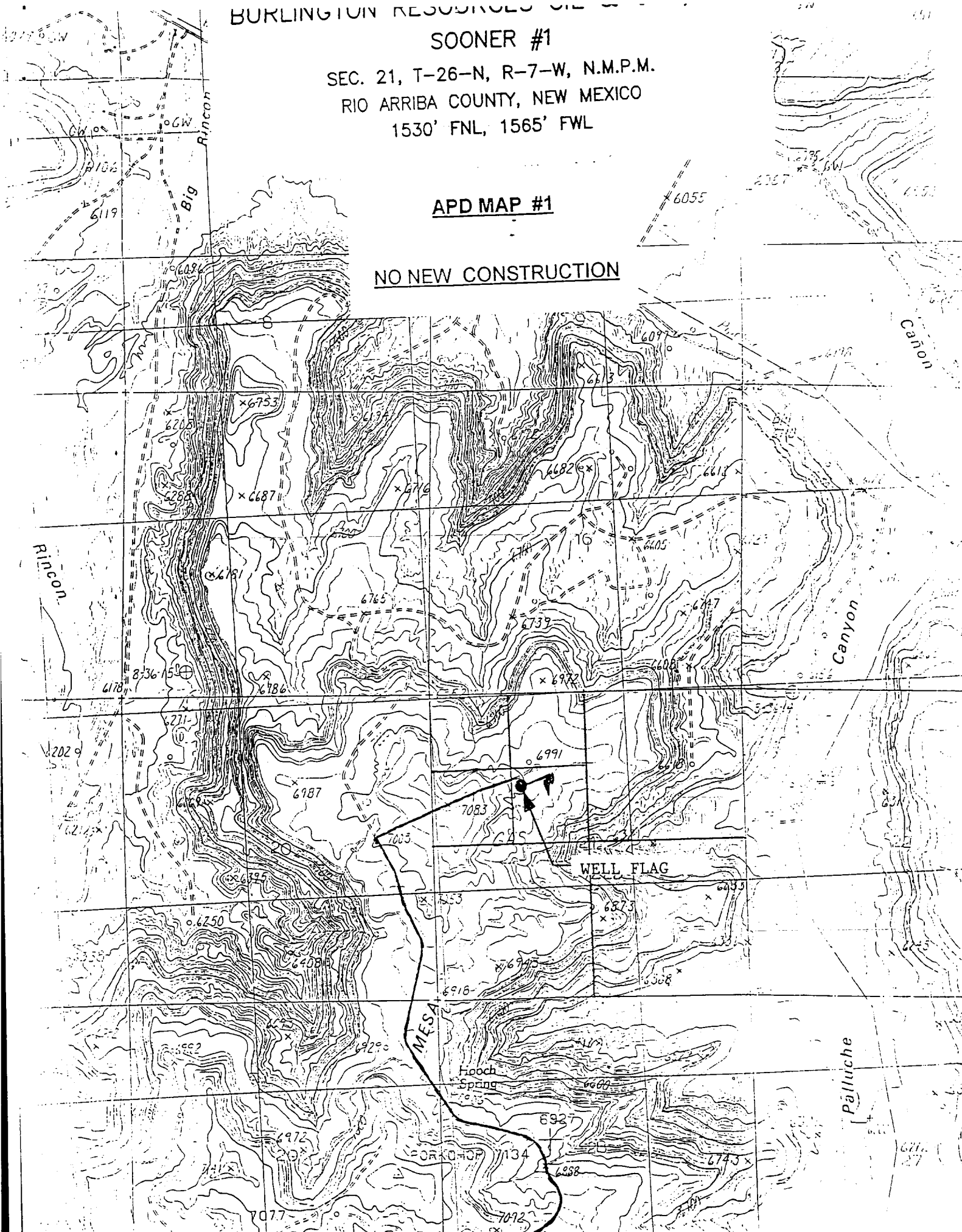
NO ALLOWABLE WILL BE ASSIGNED TO THIS COMPLETION UNTIL ALL INTERESTS HAVE BEEN CONSOLIDATED
OR A NON-STANDARD UNIT HAS BEEN APPROVED BY THE DIVISION

¹⁶ FD B.L.M. BC B.L.M. 1954 S 00-17-04 W 2596.66' S 89-40-00 W 1530' 1565' LAT. 36°28.5'N LONG. 107°35.1'W FD B.L.M. BC B.L.M. 1954		5279.34'		CALC'D POINT	
21		USA NMNM-93252		MAR 2001	
¹⁷ OPERATOR CERTIFICATION I hereby certify that the information contained herein is true and complete to the best of my knowledge and belief Signature <u>Peggy Cole</u> Printed Name <u>Peggy Cole</u> Title <u>Regulatory Supervisor</u> Date <u>12-12-00</u>					
¹⁸ SURVEYOR CERTIFICATION I hereby certify that the well location shown on this plat was plotted from field notes of actual surveys made by me or under my supervision, and that the same is true and correct to the best of my belief. Date of Survey <u>10-17-00</u> Signature and Seal of Professional Surveyor <u>[Signature]</u> Certificate Number <u>8894</u>					

SEC. 21, T-26-N, R-7-W, N.M.P.M.
RIO ARRIBA COUNTY, NEW MEXICO
1530' FNL, 1565' FWL

APD MAP #1

NO NEW CONSTRUCTION



OPERATIONS PLAN

Well Name: Sooner #1
Location: 1530' FNL, 1565' FWL, Sec 21, T-26-N, R-7-W
Rio Arriba County, NM
Latitude 36° 28.5, Longitude 107° 35.1
Formation: Basin Dakota
Elevation: 7000' GL

<u>Formation Tops:</u>	<u>Top</u>	<u>Bottom</u>	<u>Contents</u>
Surface	San Jose	2283'	
Ojo Alamo	2283'	2451'	aquifer
Kirtland	2451'	2880'	gas
Fruitland	2880'	3026'	gas
Pictured Cliffs	3026'	3105'	gas
Lewis	3105'	3482'	gas
Mesa Verde	3482'	3923'	gas
Chacra	3923'	4663'	gas
Massive Cliff House	4663'	4716'	gas
Menefee	4716'	5286'	gas
Massive Point Lookout	5286'	5713'	gas
Mancos	5713'	6343'	gas
Gallup	6343'	7245'	gas
Greenhorn	7245'	7302'	gas
Graneros	7302'	7356'	gas
Dakota	7356'		gas
TD	7700'		

Logging Program:

Open hole - Neutron-Density - TD to intermediate casing,
DIL-GR TD to surface
Cased hole - CBL-CCL-GR - TD to surface
Cores - none

Mud Program:

<u>Interval</u>	<u>Type</u>	<u>Weight</u>	<u>Vis.</u>	<u>Fluid Loss</u>
0- 320'	Spud	8.4-8.9	40-50	no control
320- 7700'	LSND	8.4-9.0	40-60	8-12

Pit levels will be visually monitored to detect gain or loss of fluid control.

Casing Program:

<u>Hole Size</u>	<u>Depth Interval</u>	<u>Csg. Size</u>	<u>Wt.</u>	<u>Grade</u>
12 1/4"	0' - 320'	8 5/8"	24.0#	WC-50
7 7/8"	0' - 7700'	4 1/2"	11.6#	N-80

Tubing Program:

0' - 7700' 2 3/8" 4.7# J-55

BOP Specifications, Wellhead and Tests:

Surface to TD -

11" 3000 psi minimum double gate BOP stack (Reference Figure #1).
After nipple-up prior to drilling out surface casing, rams and casing will be tested to 600 psi for 30 minutes.

2" nominal, 3000 psi minimum choke manifold (Reference Figure #3).

Completion Operations -

6" 3000 psi double gate BOP stack (Reference Figure #2).
After nipple-up prior to completion, pipe rams and casing top will be tested to 3000 psi for 15 minutes.

Surface to Total Depth -

2" nominal, 3000 psi minimum choke manifold (Reference Figure #3).

Wellhead -

8 5/8" x 4 1/2" x 1 1/2" x 1 1/2" x 3000 psi tree assembly.

General -

- Pipe rams will be actuated once each day and blind rams will be actuated once each trip to test proper functioning.
- An upper kelly cock valve with handle available and drill string valves to fit each drill string will be available on the rig floors at all times.
- A BOP pit level drill will be conducted weekly for each drilling crew.
- All of the BOP tests and drills will be recorded in the daily drilling reports.
- Blind and pipe rams will be equipped with extension hand wheels.

Cementing:

8 5/8" surface casing -

Cement to surface w/336 sx Class "G" cement w/3% calcium chloride and 1/4#/sx cellophane flakes (396 cu.ft. of slurry, 200% excess to circulate to surface.) WOC 8 hr prior to drilling out surface casing. Test casing to 600 psi for 30 minutes.

Saw tooth guide shoe on bottom. Bowspring centralizers will be run in accordance with Onshore Order #2.

Production Casing - 4 1/2"

Two-stage cement job as follows:

First Stage: Cement to circulate to stage tool @ 4513'. Lead with 756 sx class ""G" 50/50 poz w/5% gel, 0.25 pps Celloflake, 5 pps Gilsonite, 0.25 pps Fluid loss, 0.15% dispersant, 0.1% retarder. WOC 4 hours prior to pumping second stage. (Slurry volume: 1089 cu.ft. Excess slurry 50%.)

Second Stage: Cement to circulate to surface. Cement with 612 sx Litecrete, 0.11% dispersant. WOC a minimum of 18 hours prior to cleanout. (Slurry volume: 1542 cu.ft. Excess slurry: 50%.)


Float shoe on bottom. Three centralizers run every other joint above shoe. Thirty-five centralizers - one every 4th joint to the base of the Ojo Alamo @ 2451'. Two turbolizing type centralizers - one below and one into the base of the Ojo Alamo @ 2451'. Standard centralizers thereafter every fourth joint up to the base of the surface pipe.

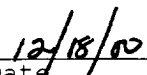
Note: If open hole logs are run, cement volumes will be based on 25% excess over caliper volumes.

Additional Information:

The Dakota formations will be completed.

- No abnormal temperatures or hazards are anticipated.
- Sufficient LCM will be added to the mud system to maintain well control, if lost circulation is encountered below the top of the Pictured Cliffs.
- The north half of Section 21 is dedicated to this well.
- This gas is dedicated.
- Anticipated pore pressure
 - Fruitland Coal 300 psi
 - Pictured Cliffs 500 psi
 - Mesa Verde 700 psi
 - Dakota 3000 psi


Drilling Engineer


Date