

UNITED STATES  
DEPARTMENT OF THE INTERIOR  
BUREAU OF LAND MANAGEMENT

## APPLICATION FOR PERMIT TO DRILL OR DEEPEN

1. TYPE OF WORK  
DRILL ☒ DEEPEN ☐

2. TYPE OF WELL  
OIL WELL ☐ GAS WELL ☒ OTHER ☐ SINGLE ZONE ☐ MULTIPLE ZONE ☒

3. NAME OF OPERATOR  
Pure Resources

4. ADDRESS AND TELEPHONE NO.  
P.O. Box 850, Bloomfield New Mexico

5. LOCATION OF WELL (Report location clearly and in accordance with any State requirement)  
At surface 1158' FNL and 1980' FWL  
At proposed prod. zone Same as Surface

6. DISTANCE IN MILES AND DIRECTION FROM NEAREST TOWN OR POST OFFICE  
40 miles Southeast from Bloomfield NM.

7. DISTANCE FROM PROPOSED LOCATION TO NEAREST PROPERTY OR LEASE LINE FT (Also to nearest drg. Unit line, if any)  
4122'

8. DISTANCE FROM PROPOSED LOCATION TO NEAREST WELL, DRILLING, COMPLETED OR APPLIED FOR, ON THIS LEASE, FT.  
1600'

9. NO. OF ACRES IN LEASE  
2645.09

10. PROPOSED DEPTH  
7650'

11. NO. OF ACRES ASSIGNED TO THIS WELL  
320 1 1/2

12. ROTARY OR CABLE TOOLS  
Rotary

13. ELEVATIONS (Show whether DF, RT, GR,)  
6513' GR

14. APPROX. DATE WORK WILL START  
April 1, 2001

## PROPOSED CASING AND CEMENTING PROGRAM

SIZE OF HOLE	GRADE, SIZE OF CASING	WEIGHT PER FOOT	SETTING DEPTH	QUANTITY OF CEMENT
12-1/4"	H-40 9-5/8"	32.3#	350'	285 SACKS "B" TOC @ SURFACE
8-3/4"	K-55 7"	20#	2644'	300 SACKS TYPE III TOC @ SURFACE
6-1/4"	N-80 4-1/2"	11.6#	7650'	SACKS 65/35 POZ TYPE III TOC TIED INTO 7' CAS

"Expedited APD/ROW"

Pure Resources plans to drill the Rincon Unit 165M, and complete in the Mesa Verde and the Basin Dakota and downhole commingle the two formations.

BOP- One double gate BOP with 3-1/2" pipe and blind rams, one choke manifold with adjustable and positive chokes, an accumulator will hydraulically operate BOP with 1 1/2 times the necessary capacity to close the rams and retain a minimum of 200 psi above recharge. Rotating head will be utilized during the drilling of the 6-1/4" hole. (Schematics are attached)

**DRILLING OPERATIONS AUTHORIZED ARE  
SUBJECT TO COMPLIANCE WITH ATTACHED  
"GENERAL REQUIREMENTS"**

This action is subject to technical and  
procedural review pursuant to 43 CFR 3105.3  
and appeal pursuant to 43 CFR 3105.4.

IN ABOVE SPACE DESCRIBED PROGRAM: If proposal is to deepen, give data on present productive zone and proposed new productive zone. If proposal is to drill or deepen directionally, give pertinent data on subsurface locations and measured and true vertical depths. Give blowout preventer program, if any.

SIGNED Mike C. Phillips TITLE San Juan Basin Area Foreman DATE 02/17/01  
MIKE C. PHILLIPS

(This space for Federal or State office use)

PERMIT NO. \_\_\_\_\_ APPROVAL DATE 5/9/01

Application approval does not warrant or certify that the applicant holds legal or equitable title to those rights in the subject lease which would entitle the application to conduct operations thereon.  
CONDITIONS OF APPROVAL, IF ANY:

APPROVED BY /s/ Lee Otteni TITLE \_\_\_\_\_ DATE \_\_\_\_\_

\*See Instructions On Reverse Side

Title 18 U.S.C. Section 1001, make it a crime for any person knowingly and willfully to make to any department or agency of the United States any false, fictitious or fraudulent statements or representations as to any matter within its jurisdiction.

NMOCD

DISTRICT I  
1825 N. French Dr., Hobbs, N.M. 88240

State of New Mexico  
Energy, Minerals & Natural Resources Department

Form C-102  
Revised August 15, 2000

DISTRICT II  
811 South First, Artesia, N.M. 88210

Submit to Appropriate District Office  
State Lease - 4 Copies  
Fee Lease - 3 Copies

DISTRICT III  
1000 Rio Brazos Rd., Aztec, N.M. 87410

OIL CONSERVATION DIVISION

2040 South Pacheco  
Santa Fe, NM 87505

DISTRICT IV  
2040 South Pacheco, Santa Fe, NM 87505

☐ AMENDED REPORT

WELL LOCATION AND ACREAGE DEDICATION PLAT

*API Number 30-039-26678		*Pool Code 71599	*Pool Name Basin Dakota
*Property Code 26629	*Property Name RINCON UNIT		*Well Number 165M
*OGRID No. 189071	*Operator Name PURE RESOURCES		*Elevation 6513'

<sup>10</sup> Surface Location

UL or lot no.	Section	Township	Range	Lot Idn	Feet from the	North/South line	Feet from the	East/West line	County
C	27	27-N	6-W		1158'	NORTH	1980'	WEST	RIO ARriba

<sup>11</sup> Bottom Hole Location If Different From Surface

UL or lot no.	Section	Township	Range	Lot Idn	Feet from the	North/South line	Feet from the	East/West line	County
<sup>12</sup> Dedicated Acres 320			<sup>13</sup> Joint or Infill		<sup>14</sup> Consolidation Code		<sup>15</sup> Order No.		

NO ALLOWABLE WILL BE ASSIGNED TO THIS COMPLETION UNTIL ALL INTERESTS HAVE BEEN CONSOLIDATED  
OR A NON-STANDARD UNIT HAS BEEN APPROVED BY THE DIVISION

<p><sup>16</sup> SEC. CORNER FD. 3 1/4" BC B.L.M. 1955</p> <p>N 89-16-52 E 2641.60'</p> <p>QTR. CORNER FD. 3 1/4" BC B.L.M. 1955</p> <p>LAT. = 36°32'59" N. LONG. = 107°27'26" W.</p> <p>2619.50'</p> <p>1980'</p> <p>659'</p> <p>152'</p> <p>662'</p> <p>1158'</p> <p>991</p> <p>S 00-19-04 W</p> <p>QTR. CORNER FD. 3 1/4" BC B.L.M. 1955</p> <p>27</p>	<p><sup>17</sup> OPERATOR CERTIFICATION</p> <p>I hereby certify that the information contained herein is true and complete to the best of my knowledge and belief.</p> <p><i>Michael C. Phillips</i> Signature</p> <p>Michael C. Phillips Printed Name</p> <p>San Juan Basin Foreman Title</p> <p>2/5/01 Date</p>
	<p><sup>18</sup> SURVEYOR CERTIFICATION</p> <p>I hereby certify that the well location shown on this plat was plotted from field notes of actual surveys made by me or under my supervision, and that the same is true and correct to the best of my belief.</p> <p>ROY A. BUSH NEW MEXICO 8894 Date of Survey Signature and Seal of Professional Surveyor</p> <p>8894 Certificate Number</p>

DISTRICT I  
1625 N. French Dr., Hobbs, N.M. 88240

State of New Mexico  
Energy, Minerals & Natural Resources Department

Form C-102  
Revised August 15, 2000

DISTRICT II  
811 South First, Artesia, N.M. 88210

Submit to Appropriate District Office  
State Lease - 4 Copies  
Fee Lease - 3 Copies

DISTRICT III  
1000 Rio Brazos Rd., Aztec, N.M. 87410

OIL CONSERVATION DIVISION  
2040 South Pacheco  
Santa Fe, NM 87505

DISTRICT IV  
2040 South Pacheco, Santa Fe, NM 87505

☐ AMENDED REPORT

WELL LOCATION AND ACREAGE DEDICATION PLAT

*API Number 30-039-26678		*Pool Code 72319	*Pool Name Blanco Mesa Verde
*Property Code 26629	*Property Name RINCON UNIT		*Well Number 165M
*GRID No. 189071	*Operator Name PURE RESOURCES		*Elevation 6513'

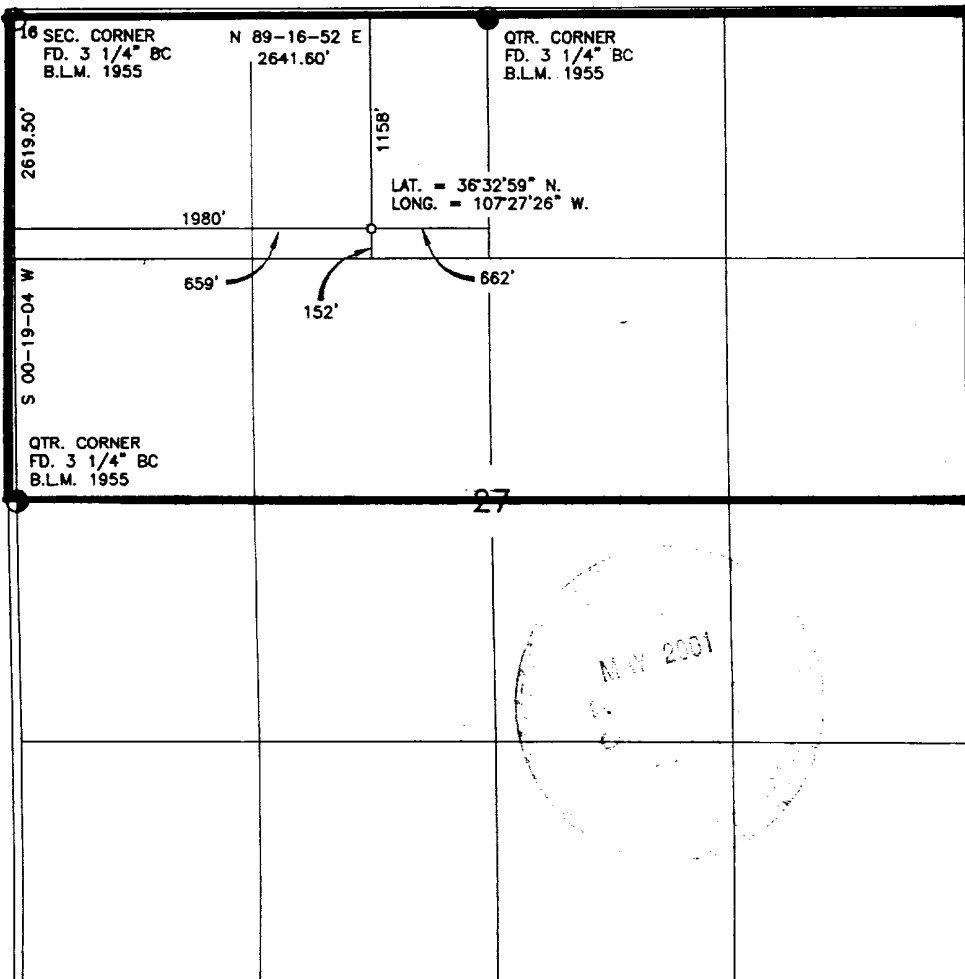
<sup>10</sup> Surface Location

UL or lot no.	Section	Township	Range	Lot Idn	Feet from the	North/South line	Feet from the	East/West line	County
C	27	27-N	6-W		1158'	NORTH	1980'	WEST	RIO ARR BA

<sup>11</sup> Bottom Hole Location If Different From Surface

UL or lot no.	Section	Township	Range	Lot Idn	Feet from the	North/South line	Feet from the	East/West line	County
<sup>12</sup> Dedicated Acres 320			<sup>13</sup> Joint or Infill		<sup>14</sup> Consolidation Code		<sup>15</sup> Order No.		

NO ALLOWABLE WILL BE ASSIGNED TO THIS COMPLETION UNTIL ALL INTERESTS HAVE BEEN CONSOLIDATED  
OR A NON-STANDARD UNIT HAS BEEN APPROVED BY THE DIVISION



17 OPERATOR CERTIFICATION

I hereby certify that the information contained herein  
is true and complete to the best of my knowledge and  
belief.

Micheal C. Phillips  
Signature

Micheal C. Phillips  
Printed Name  
San Juan Basin Foreman  
Title

2/5/01  
Date

18 SURVEYOR CERTIFICATION

I hereby certify that the well location shown on this plat  
was plotted from field notes of actual surveys made by  
me or under my supervision, and that the same is true  
and correct to the best of my belief.

8894  
Date of Survey  
Signature and Seal of Professional Surveyor

8894  
Certificate Number

PURE RESOURCES  
RINCON UNIT No. 165M  
NW/4 SEC. 27, T-27-N, R-6-W, N.M.P.M.  
RIO ARriba COUNTY, NEW MEXICO  
1158' FNL 1980' FWL

