

UNITED STATES  
DEPARTMENT OF THE INTERIOR  
BUREAU OF LAND MANAGEMENT

## APPLICATION FOR PERMIT TO DRILL OR DEEPEN

1 a. TYPE OF WORK

DRILL



DEEPEEN



b. TYPE OF WELL

OIL

WELL



GAS

WELL



OTHER



SINGLE

ZONE



MULTIPLE

ZONE



2. NAME OF OPERATOR

Pure Resources

3. ADDRESS AND TELEPHONE NO.

P.O. Box 850, Bloomfield New Mexico

4. LOCATION OF WELL (Report location clearly and in accordance with any State requirement)\*

At surface

1209' FNL and 1597' FFL

At proposed prod zone

Same as Surface

14. DISTANCE IN MILES AND DIRECTION FROM NEAREST TOWN OR POST OFFICE\*

40 miles Southeast from Bloomfield NM.

15. DISTANCE FROM PROPOSED\*

LOCATION TO NEAREST  
PROPERTY OR LEASE LINE FT. (Also to  
nearest dog, unit line, if any)

4071'

16. NO. OF ACRES IN LEASE

2645.09

18. DISTANCE FROM PROPOSED\* LOCATION TO  
NEAREST WELL, DRILLING COMPLETED  
OR APPLIED FOR, ON THIS LEASE, FT.

2400'

19. PROPOSED DEPTH

7650' -

17. NO. OF ACRES ASSIGNED TO  
THIS WELL

320 N/LKmv 320 E-2Kd

20. ROTARY OR CABLE TOOLS

Rotary

21. ELEVATIONS (Show whether DF, RT, GR,

6709' GR

22. APPROX DATE WORK WILL START\*

April 1, 2001

## 23. PROPOSED CASING AND CEMENTING PROGRAM

SIZE OF HOLE	GRADE, SIZE OF CASING	WEIGHT PER FOOT	SETTING DEPTH	QUANTITY OF CEMENT
12-1/4"	H-40 9-5/8"	32.3#	350'	285 SACKS "B" TOC @ SURFACE
8-3/4"	K-55 7"	20#	2450'	300 SACKS TYPE III TOC @ SURFACE
6-1/4"	N-80 4-1/2"	11.6#	7650'	SACKS 65/35 POZ TYPE III TOC TIED INTO 7" CAS

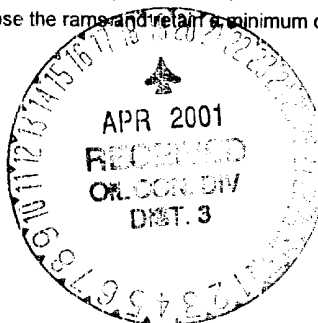
procedural review pursuant to 43 CFR 3165.3 "Expedited APD/ROW  
and appeal pursuant to 43 CFR 3165.4.RECEIVED  
BUREAU OF LAND MANAGEMENT  
APR 10 2001  
COLUMBIA, MISSOURI

Pure plans to drill the Rincon Unit 229M, and complete in the Mesa Verde and the Basin Dakota and downhole commingle the two formations.

BCP- One double gate BOP with 3-1/2" pipe and blind rams, one choke manifold with adjustable and positive chokes, an accumulator  
will hydraulically operate BOP with 1 1/2 times the necessary capacity to close the rams and retain a minimum of 200 psi above recharge.

Rotating head will be utilized during the drilling of the 6-1/4" hole.

(Schematics are attached)

IN ABOVE SPACE DESCRIBED PROGRAM: If proposal is to deepen, give data on present productive zone and proposed new productive zone. If proposal is to drill or  
deepen directionally, give pertinent data on subsurface locations and measured and true vertical depths. Give blowout preventer program, if any.

24.

SIGNED

MIKE C. PHILLIPS

TITLE

San Juan Basin Area Foreman

DATE

02/25/01

(This space for Federal or State office use)

PERMIT NO.

APPROVAL DATE

Application approval does not warrant or certify that the applicant holds legal or equitable title to those rights in the subject lease which would entitle the application to conduct operations thereon.  
CONDITIONS OF APPROVAL, IF ANY:

APPROVED BY

/s/ Lee Ottoni

TITLE

DATE

APR 10

\*See Instructions On Reverse Side

Title 18 U.S.C. Section 1001, make it a crime for any person knowingly and willfully to make to any department or agency of the  
United States any false, fictitious or fraudulent statements or representations as to any matter within its jurisdiction.

NMOCD

X

DISTRICT I  
1835 N. French Dr., Hobbs, N.M. 88240

DISTRICT II  
811 South First, Artesia, N.M. 88210

DISTRICT III  
1000 Elia Bracco Rd., Artec, N.M. 87410

DISTRICT IV  
2040 South Pacheco, Santa Fe, NM 87505

State of New Mexico  
Energy, Minerals & Natural Resources Department

Form C-102  
Revised August 15, 2000

Submit to Appropriate District Office  
State Lease - 4 Copies  
Fee Lease - 3 Copies

OIL CONSERVATION DIVISION

2040 South Pacheco  
Santa Fe, NM 87505

☐ AMENDED REPORT

WELL LOCATION AND ACREAGE DEDICATION PLAT

*API Number 30-039-26682		*Pool Code 71599	*Pool Name Basin Dakota
*Property Code 26629	*Property Name RINCON UNIT		*Well Number 229M
*OGRID No. 189071	*Operator Name PURE RESOURCES		*Elevation 8709' ---

<sup>10</sup> Surface Location

UL or lot no.	Section	Township	Range	Lot Idn	Feet from the	North/South line	Feet from the	East/West line	County
B	34	27-N	7-W		1209'	NORTH	1597'	EAST	RIO ARriba

<sup>11</sup> Bottom Hole Location If Different From Surface

UL or lot no.	Section	Township	Range	Lot Idn	Feet from the	North/South line	Feet from the	East/West line	County

*Dedicated Acres 320	*Joint or Infill	*Consolidation Code	*Order No.
-------------------------	------------------	---------------------	------------

NO ALLOWABLE WILL BE ASSIGNED TO THIS COMPLETION UNTIL ALL INTERESTS HAVE BEEN CONSOLIDATED  
OR A NON-STANDARD UNIT HAS BEEN APPROVED BY THE DIVISION

<p>16</p> <p>SEC. CORNER FD. BRASS CAP BLM 1955</p>	<p>S 88-34-59 W 5276.35'</p> <p>1209'</p> <p>1036'</p> <p>1597'</p> <p>S 00-23-37 W 2771.85'</p> <p>LAT. = 38-32-01 N. LONG. = 107-33-33 W.</p> <p>177</p> <p>34 5F-080385</p> <p>SEC. CORNER FD. BRASS CAP BLM 1955</p> <p>APR 2001 RECEIVED OIL CONSERVATION DIVISION</p>	<p>17 OPERATOR CERTIFICATION</p> <p>I hereby certify that the information contained herein is true and complete to the best of my knowledge and belief.</p> <p><u>Michael C. Phillips</u> Signature</p> <p><u>Michael C. Phillips</u> Printed Name</p> <p><u>San Juan Basin Foreman</u> Title</p> <p><u>2/5/01</u> Date</p>	<p>18 SURVEYOR CERTIFICATION</p> <p>I hereby certify that the well location shown on this plat was plotted from field notes of actual surveys made by me or under my supervision, and that the same is true and correct to the best of my belief.</p> <p><u>12</u> Date of Survey</p> <p><u>8894</u> Certificate Number</p> <p>NEW MEXICO REGISTERED PROFESSIONAL LAND SURVEYOR 8894</p>
---	---	---	--

DISTRICT II  
811 South First, Arizola, N.M. 86210

DISTRICT III  
1000 Rio Bravo Rd., Artec, N.M. 87410

DISTRICT IV  
2040 South Pacheco, Santa Fe, NM 87506

**OIL CONSERVATION DIVISION**

2040 South Pacheco  
Santa Fe, NM 87505

Submit to Appropriate District Office  
State Lease - 4 Copies  
Fee Lease - 3 Copies

☐ AMENDED REPORT

# WELL LOCATION AND ACREAGE DEDICATION PLAT

*API Number 30-039-26682		*Pool Code 72319	*Pool Name Blanco Mesa Verde	
*Property Code 26629	*Property Name RINCON UNIT			*Well Number 229M
*OGEID No. 189071	*Operator Name PURE RESOURCES			*Elevation 8709'—

### <sup>10</sup> Surface Location

UL or lot no.	Section	Township	Range	Lot 14n	Feet from the	North/South line	Feet from the	East/West line	County
B	34	27-N	7-W		1209'	NORTH	1597'	EAST	RIO ARRIBA

## 11 Bottom Hole Location If Different From Surface

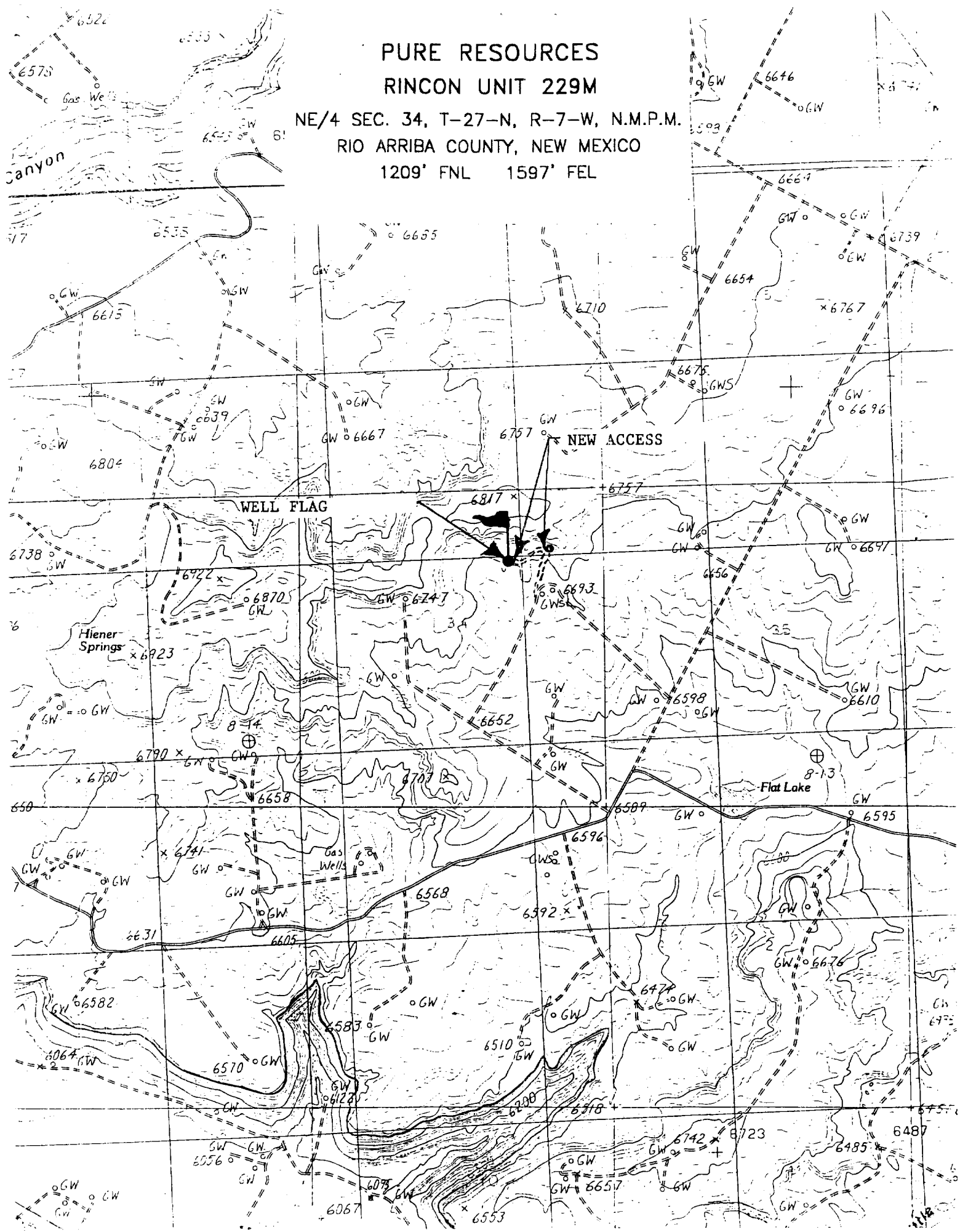
UL or lot no.	Section	Township	Range	Lot Idn	Feet from the	North/South line	Feet from the	East/West line	County
12 Dedicated Acres			13 Joint or Infill		14 Consolidation Code		15 Order No.		
320									

NO ALLOWABLE WILL BE ASSIGNED TO THIS COMPLETION UNTIL ALL INTERESTS HAVE BEEN CONSOLIDATED  
OR A NON-STANDARD UNIT HAS BEEN APPROVED BY THE DIVISION

<p>18</p> <p>SEC. CORNER FD. BRASS CAP BLM 1955</p>	<p>S 89-14-59 W 5270.35'</p> <p>1209'</p> <p>1038'</p> <p>1597'</p> <p>LAT. = 36-32-01 N. LONG. = 107-33-33 W.</p> <p>177'</p> <p>SEC. CORNER FD. BRASS CAP BLM 1955</p>	<p>17</p> <p><b>OPERATOR CERTIFICATION</b></p> <p>I hereby certify that the information contained herein is true and complete to the best of my knowledge and belief.</p> <p><u>Micheal C. Phillips</u> Signature Micheal C. Phillips Printed Name</p> <p><u>San Juan Basin Foreman</u> Title</p> <p><u>2/05/01</u> Date</p>
	<p>34</p> <p>SEC. CORNER FD. BRASS CAP BLM 1955</p> <p>APR 2001 RECORDED OIL COM. DIV. DIST. 3</p>	<p>18</p> <p><b>SURVEYOR CERTIFICATION</b></p> <p>I hereby certify that the well location shown on this plat was plotted from field notes of actual surveys made by me or under my supervision and that the same is true and correct to the best of my belief.</p> <p><u>12/4/00</u> Date of Survey</p> <p><u>[Signature]</u> Signature and Seal of Professional Surveyor</p> <p><u>8894</u> Certificate Number</p>

PURE RESOURCES  
RINCON UNIT 229M

NE/4 SEC. 34, T-27-N, R-7-W, N.M.P.M.  
RIO ARriba COUNTY, NEW MEXICO  
1209' FNL 1597' FEL



**PURE RESOURCES WELL NO. 229M**  
**1,209' FNL, 1,597' FEL, SEC. 34, T-27-N, R-7-W**  
**RIO ARriba CO. NEW MEXICO**

**8 POINT DRILLING PLAN**

1. **ESTIMATED FORMATION TOPS**

<b><u>FORMATION NAME</u></b>	<b><u>DEPTH FROM GL</u></b>
San Jose	Surface
Ojo Alamo	2,010'
Kirtland Shale	2,410'
Pictured Cliffs	3,007'
Lewis Shale	3,207'
Cliff House	4,697'
Point Lookout	5,277'
Mancos	5,647'
Tocito Sand	6,817'
Dakota	7,424'
Total Depth	7,580'
Permit TD	7,650'

2. **OIL, GAS, WATER, OR OTHER MINERAL BEARING ZONES**

<b><u>EXPECTED GAS ZONES</u></b>	<b><u>DEPTH FROM GL</u></b>
Fruitland Coal	2950'-3007'
Pictured Cliffs	3007-3207'
Mesa Verde	4697-5647'
Dakota	7424-7580'

<b><u>EXPECTED WATER ZONES</u></b>	<b><u>DEPTH FROM GL</u></b>
Ojo Alamo	2010'

Possible water zones will be protected by 7" intermediate casing and/or 4-1/2" production strings, 7" cemented to surface, and 4-1/2" casing cement tied in to 7".

3. **PRESSURE CONTROL BOP'S AND RELATED EQUIPMENT**

Casing Head: 7" x 11" – 3000 psi W.P.

BOP Stack and Related Equipment: (See Attachment No. 1 &2).

**RINCON UNIT WELL NO. 229M**  
**DRILLING PROGRAM – PAGE 2**

One double-gate BOP with 4-1/2" and then 3-1/2" pipe and blind rams.

One choke manifold with adjustable and positive chokes.

An accumulator will hydraulically operate the BOP with 1-1/2 times the necessary capacity to close the rams and retain a minimum of 200psi above recharge. The remote unit will be located in the bottom "dog house" or on the ground between the "dog house" and the toolpushers trailer. A rotating head on top of the BOP stack will be utilized when necessary.

Testing Procedure:

The BOP and related equipment will be tested in accordance with the provisions of Onshore Oil and Gas Order No. 2.

BOP's will be operationally tested daily and each test will be logged in the IADC Daily Drilling Report.

Blooie Line:

The blooie line and related equipment will meet all requirements of Onshore Oil and Gas Order No. 2.

4. **CASING AND CEMENTINNG PROGRAM**

**SURFACE CASING (*Spud Mud*)**

<u>Age</u>	<u>Depth</u>	<u>Hole Size</u>	<u>Size</u>	<u>Weight</u>	<u>Grade</u>	<u>Thread</u>
New	0-350'	12-1/4"	9-5/8"	32.3#	H-40	ST&C

**INTERMEDIATE CASING (*FW Mud*)**

<u>Age</u>	<u>Depth</u>	<u>Hole Size</u>	<u>Size</u>	<u>Weight</u>	<u>Grade</u>	<u>Thread</u>
New	0-2450	8-3/4"	7"	20#	K-55	ST&C

**PRODUCTION CASING (*Air Dusting*)**

<u>Age</u>	<u>Depth</u>	<u>Hole Size</u>	<u>Size</u>	<u>Weight</u>	<u>Grade</u>	<u>Thread</u>
New	0-TD	6-1/4"	4-1/2"	11.6#	I-80	LT&C

**MINIMUM SAFETY FACTORS**

Collapse: 1.125

Tension: 1.8

Burst: 1.0

**RINCON UNIT WELL NO. 229M**  
**DRILLING PROGRAM – PAGE 3**

**Cementing Program**

1. The 9-5/8" surface casing will be cemented to the surface with 200 sacks of class Type III "B" cement + 2 Cacl2 and 1/4# per cello flake. (1.39 cu/ft) 14.5ppg
2. The 7" intermediate casing will be cemented to surface with; 325 sacks of type III (35:65) Poz cement + 8% gel + 2% CACL2, + 6.25#/sack Gilsonite, .25 lbs/sk Cello Flake @ (2.11 CU/FT) 12.1 ppg , Followed by 80 sacks class "B" cement + 2% CACL2 + 1/4 #/sack cello-flake. @ (1.39 CU/FT) 14.5 ppg.
3. The 4-1/2" production casing will be cemented and tied into the intermediate casing with 600 sacks 65/35 Poz Type III cement + 1/4 #/sack CF, 6% gel, 10#/sack CSE + 2% KCL, FL-62 + .2% CD-32, @ (2.06 CU/FT) 12.5 ppg.

Casing hardware for the production string to include guide shoe, float collar, centralized shoe joint and next five joints. Centralizers across producing zones.

**Auxiliary Equipment**

A kelly cock will be used with handle available. A full opening safety valve will be used when Kelly is out of string. Rotating head while air drilling. Will have vacuum diversion on blooie line.

5. **DRILLING FLUID PROGRAM**

<u>Depth</u>	<u>Type</u>	<u>Weight</u>	<u>Vis</u>	<u>W.L.</u>
0-350'	Spud Mud			N.C.
350-2450'	Fresh Water Gel	8.3-8.6	30-35	N.C
2450'-TD	Air	N.C.	N.C.	N.C.