

UNITED STATES  
DEPARTMENT OF THE INTERIOR  
BUREAU OF LAND MANAGEMENT

## APPLICATION FOR PERMIT TO DRILL OR DEEPEN

1.a TYPE OF WORK

DRILL



DEEPEN



b. TYPE OF WELL

OIL  
WELLGAS  
WELL

OTHER

SINGLE  
ZONEMULTIPLE  
ZONE

2. NAME OF OPERATOR

Pure Resources

3. ADDRESS AND TELEPHONE NO.

P.O. Box 850, Bloomfield New Mexico

4. LOCATION OF WELL (Report location clearly and in accordance with any State requirement)

At surface

1955' FNL and 1884' FEL

At proposed prod zone

Same as Surface

14. DISTANCE IN MILES AND DIRECTION FROM NEAREST TOWN OR POST OFFICE

40 miles Southeast from Bloomfield NM.

15. DISTANCE FROM PROPOSED

LOCATION TO NEAREST  
PROPERTY OR LEASE LINE FT (Also to  
nearest dip, Unit line, if any)

3450'

16. NO. OF ACRES IN LEASE

2645.09

17. NO. OF ACRES ASSIGNED TO  
THIS WELL

320

18. DISTANCE FROM PROPOSED LOCATION TO  
NEAREST WELL, DRILLING, COMPLETED  
OR APPLIED FOR, ON THIS LEASE, FT.

1200'

19. PROPOSED DEPTH

7750'

20. ROTARY OR CABLE TOOLS

Rotary

21. ELEVATIONS (Show whether DF, RT, GR.

6621' GR

22. APPROX. DATE WORK WILL START

12/01

## 28. PROPOSED CASING AND CEMENTING PROGRAM

SIZE OF HOLE	GRADE, SIZE OF CASING	WEIGHT PER FOOT	SETTING DEPTH	QUANTITY OF CEMENT
12-1/4"	H-40 9-5/8"	32.3#	350'	285 SACKS "B" TOC @ SURFACE
8-3/4"	K-55 7"	20#	2457'	300 SACKS TYPE III TOC @ SURFACE
6-1/4"	N-80 4-1/2"	11.6#	7750'	SACKS 65/35 POZ TYPE III TOC TIED INTO 7" CAS

This action is subject to technical and  
procedural review pursuant to 43 CFR 3165.3  
and appeal pursuant to 43 CFR 3165.4.

"Expedited APD/ROW"

**DRILLING OPERATIONS AUTHORIZED ARE  
SUBJECT TO COMPLIANCE WITH ATTACHED  
"GENERAL REQUIREMENTS"**

Pure plans to drill the Rincon Unit 127R, and complete in the Mesa Verde and the Basin Dakota and downhole commingle the two formations.

BOP- One double gate BOP with 3-1/2" pipe and blind rams, one choke manifold with adjustable and positive chokes, an accumulator will hydraulically operate BOP with 1 1/2 times the necessary capacity to close the rams and retain a minimum of 200 psi above recharge.

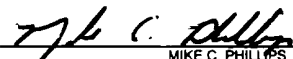
Rotating head will be utilized during the drilling of the 6-1/4" hole.

(Schematics are attached)

IN ABOVE SPACE DESCRIBED PROGRAM: If proposal is to deepen, give data on present productive zone and proposed new productive zone. If proposal is to drill or deepen directionally, give pertinent data on subsurface locations and measured and true vertical depths. Give blowout preventer program, if any.

24.

SIGNED

  
MIKE C. PHILLIPS

TITLE

SJ Basin Area Drilling/Production Foreman

DATE

10/02/01

(This space for Federal or State office use)

PERMIT NO.

APPROVAL DATE

Application approval does not warrant or certify that the applicant holds legal or equitable title to those rights in the subject lease which would entitle the application to conduct operations thereon.  
CONDITIONS OF APPROVAL: ANY

  
David J. Mankiewicz

APPROVED BY

TITLE

DATE

JUL 29 2002

**\*See Instructions On Reverse Side**

Title 18 U.S.C. Section 1001, make it a crime for any person knowingly and willfully to make to any department or agency of the United States any false, fictitious or fraudulent statements or representations as to any matter within its jurisdiction.

NMOCD

DISTRICT I  
1626 N. French Dr., Hobbs, N.M. 88240

State of New Mexico  
Energy, Minerals & Natural Resources Department

Form C-102  
Revised August 15, 2000

DISTRICT II  
811 South First, Artesia, N.M. 88210

DISTRICT III  
1000 Rio Brazos Rd., Aztec, N.M. 87410

DISTRICT IV  
2040 South Pacheco, Santa Fe, NM 87505

OIL CONSERVATION DIVISION

2040 South Pacheco  
Santa Fe, NM 87505

Submit to Appropriate District Office  
State Lease - 4 Copies  
Fee Lease - 3 Copies

☐ AMENDED REPORT

WELL LOCATION AND ACREAGE DEDICATION PLAT

*API Number 30-039-26825	*Pool Code 72319	*Pool Name -Blanco Mesa Verde
*Property Code 26629	*Property Name RINCON UNIT	*Well Number 127R
*OGRID No. 189071	*Operator Name PURE RESOURCES	*Elevation 6621'

<sup>10</sup> Surface Location

UL or lot no.	Section	Township	Range	Lot Idn	Feet from the	North/South line	Feet from the	East/West line	County
G	28	27-N	6-W		1955'	NORTH	1884'	EAST	RIO ARRIBA

<sup>11</sup> Bottom Hole Location If Different From Surface

UL or lot no.	Section	Township	Range	Lot Idn	Feet from the	North/South line	Feet from the	East/West line	County
*Dedicated Acres 320			*Joint or Infill		*Consolidation Code		*Order No.		

NO ALLOWABLE WILL BE ASSIGNED TO THIS COMPLETION UNTIL ALL INTERESTS HAVE BEEN CONSOLIDATED  
OR A NON-STANDARD UNIT HAS BEEN APPROVED BY THE DIVISION

16 FD B.L.M. BC 1955	S 89-11-04 W 5299.23'	FD B.L.M. BC 1955
1955'		S 00-19-04 W 2619.50'
LAT. 36°32.50'N LONG. 107°28'13"W		1884'
28		FD B.L.M. BC 1955

17 OPERATOR CERTIFICATION

I hereby certify that the information contained herein  
is true and complete to the best of my knowledge and  
belief.

*Michael C. Phillips*  
Signature

Michael C. Phillips  
Printed Name

San Juan Basin Foreman  
Title

April 4th, 2001

Date

18 SURVEYOR CERTIFICATION

I hereby certify that the well location shown on this plat  
was plotted from field notes of actual surveys made by  
me or under my supervision and that the same is true  
and correct to the best of my belief.

Date of Survey

Signature and Seal of Professional Surveyor

*Michael C. Phillips*  
8894

Certificate Number

DISTRICT I  
1625 N. French Dr., Hobbs, N.M. 88240

State of New Mexico  
Energy, Minerals & Natural Resources Department

Form C-102  
Revised August 15, 2000

DISTRICT II  
811 South First, Artesia, N.M. 88210

DISTRICT III  
1000 Rio Brazos Rd., Aztec, N.M. 87410

DISTRICT IV  
2040 South Pacheco, Santa Fe, NM 87505

OIL CONSERVATION DIVISION  
2040 South Pacheco  
Santa Fe, NM 87505

Submit to Appropriate District Office  
State Lease - 4 Copies  
Fee Lease - 3 Copies

☐ AMENDED REPORT

WELL LOCATION AND ACREAGE DEDICATION PLAT

*API Number 30-039 - 26825		*Pool Code 71599	*Pool Name Basin Dakota
*Property Code 26629	*Property Name RINCON UNIT		*Well Number 127R
*OGRID No. 189071	*Operator Name PURE RESOURCES		*Elevation 6621'

<sup>10</sup> Surface Location

UL or lot no.	Section	Township	Range	Lot Idn	Feet from the	North/South line	Feet from the	East/West line	County
G	28	27-N	6-W		1955'	NORTH	1884'	EAST	RIO ARriba

<sup>11</sup> Bottom Hole Location If Different From Surface

UL or lot no.	Section	Township	Range	Lot Idn	Feet from the	North/South line	Feet from the	East/West line	County
<sup>12</sup> Dedicated Acres 320			<sup>13</sup> Joint or Infill		<sup>14</sup> Consolidation Code		<sup>15</sup> Order No.		

NO ALLOWABLE WILL BE ASSIGNED TO THIS COMPLETION UNTIL ALL INTERESTS HAVE BEEN CONSOLIDATED  
OR A NON-STANDARD UNIT HAS BEEN APPROVED BY THE DIVISION

16 FD B.L.M. BC 1955	S 89-11-04 W 5299.23'	FD B.L.M. BC 1955
1955'		S 00-19-04 W 2619.50'
LAT. 36°32.50'N LONG. 107°28'13"W		1884'
28		FD B.L.M. BC 1955

17 OPERATOR CERTIFICATION

I hereby certify that the information contained herein  
is true and complete to the best of my knowledge and  
belief.

Micheal C. Phillips  
Signature

Micheal C. Phillips  
Printed Name

San Juan Basin Foreman  
Title

April 4th, 2001  
Date

18 SURVEYOR CERTIFICATION

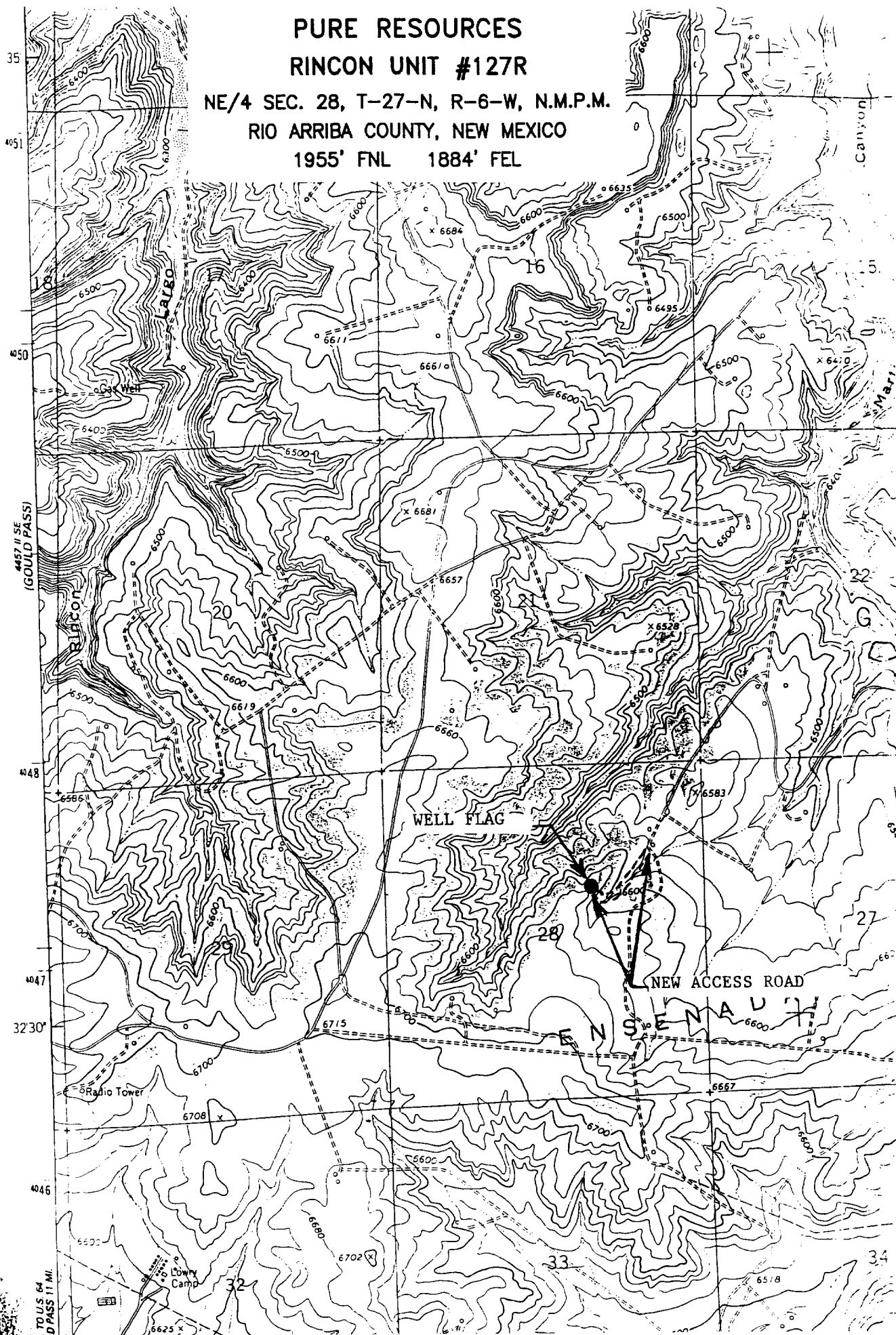
I hereby certify that the well location shown on this plat  
was plotted from field notes of actual surveys made by  
me or under my supervision, and that the same is true  
and correct to the best of my belief.

Date of Survey  
Signature and Seal of Professional Surveyor:

8894  
Certificate Number

PURE RESOURCES  
RINCON UNIT #127R

NE/4 SEC. 28, T-27-N, R-6-W, N.M.P.M.  
RIO ARriba COUNTY, NEW MEXICO  
1955' FNL 1884' FEL



**RINCON UNIT WELL NO. 127R**  
**DRILLING PROGRAM – PAGE 2**

One double-gate BOP with 4-1/2" and then 3-1/2" pipe and blind rams.

One choke manifold with adjustable and positive chokes.

An accumulator will hydraulically operate the BOP with 1-1/2 times the necessary capacity to close the rams and retain a minimum of 200psi above recharge. The remote unit will be located in the bottom "dog house" or on the ground between the "dog house" and the toolpushers trailer. A rotating head on top of the BOP stack will be utilized when necessary.

### Testing Procedure:

**Testing Procedure:**  
The BOP and related equipment will be tested in accordance with the provisions of Onshore Oil and Gas Order No. 2.

BOP's will be operationally tested daily and each test will be logged in the IADC Daily Drilling Report.

**Blooie Line:**

Bloolie Line:  
The bloolie line and related equipment will meet all requirements of Onshore Oil and Gas Order No. 2.

#### 4. CASING AND CEMENTINNG PROGRAM

### **SURFACE CASING (*Spud Mud*)**

<u>Age</u>	<u>Depth</u>	<u>Hole Size</u>	<u>Size</u>	<u>Weight</u>	<u>Grade</u>	<u>Thread</u>
New	0-350'	12-1/4"	9-5/8"	32.3#	H-40	ST&C

### **INTERMEDIATE CASING (FW Mud)**

<u>Age</u>	<u>Depth</u>	<u>Hole Size</u>	<u>Size</u>	<u>Weight</u>	<u>Grade</u>	<u>Thread</u>
New	0-2457	8-3/4"	7"	20#	K-55	ST&C

### PRODUCTION CASING (*Air Dusting*)

<u>Age</u>	<u>Depth</u>	<u>Hole Size</u>	<u>Size</u>	<u>Weight</u>	<u>Grade</u>	<u>Thread</u>
New	0-TD	6-1/4"	4-1/2"	11.6#	I-80	LT&C

### MINIMUM SAFETY FACTORS

Collapse: 1.125

Tension: 1.8

Burst: 1.0

**RINCON UNIT WELL NO. 127R**  
**DRILLING PROGRAM – PAGE 3**

**Cementing Program**

1. The 9-5/8" surface casing will be cemented to the surface with 200 sacks of class Type III "B" cement + 2 Cacl2 and ¼# per cello flake. (1.39 cu/ft) 14.5ppg
2. The 7" intermediate casing will be cemented to surface with; 325 sacks of type III (35:65) Poz cement + 8% gel + 2% CACL2, + 6.25#/sack Gilsonite, .25 lbs/sk Cello Flake @ (2.11 CU/FT) 12.1 ppg , Followed by 80 sacks class "B" cement + 2% CACL2 + ¼ #/sack cello-flake. @ (1.39 CU/FT) 14.5 ppg.
3. The 4-1/2" production casing will be cemented and tied into the intermediate casing with 600 sacks 65/35 Poz Type III cement + ¼ #/sack CF, 6% gel, 10#/sack CSE + 2% KCL, FL-62 + .2% CD-32, @ (2.06 CU/FT) 12.5 ppg. *100' / 12.5*

Casing hardware for the production string to include guide shoe, float collar, centralized shoe joint and next five joints. Centralizers across producing zones.

**Auxiliary Equipment**

A kelly cock will be used with handle available. A full opening safety valve will be used when Kelly is out of string. Rotating head while air drilling. Will have vacuum diversion on blooie line.

5. **DRILLING FLUID PROGRAM**

<u>Depth</u>	<u>Type</u>	<u>Weight</u>	<u>Vis</u>	<u>W.L.</u>
0-350'	Spud Mud			N.C.
350-2457'	Fresh Water Gel	8.3-8.6	30-35	N.C
2457-TD	Air/Nitrogen	N.C.	N.C.	N.C.