

UNITED STATES  
DEPARTMENT OF THE INTERIOR  
BUREAU OF LAND MANAGEMENT

## Sundry Notices and Reports on Wells

1. Type of Well  
GAS

2. Name of Operator

**BURLINGTON  
RESOURCES**

OIL & GAS COMPANY

3. Address & Phone No. of Operator

PO Box 4289, Farmington, NM 87499 (505) 326-9700

4. Location of Well, Footage, Sec., T, R, M

1680' FSL, 1875' FWL, Sec. 7, T-27-N, R-6-W, NMMPM

5. Lease Number  
NMNM-03583

6. If Indian, All. or  
Tribe Name

7. Unit Agreement Name

San Juan 28-6 Unit

8. Well Name & Number

San Juan 28-6 U #233

9. API Well No.

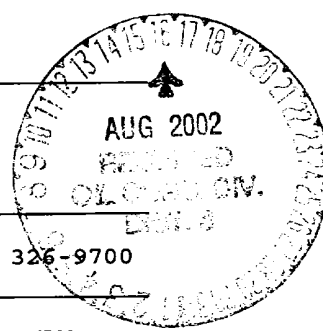
30-039-26829

10. Field and Pool

Basin Fruitland Coal/  
So Blanco Pict Cliffs

11. County and State

Rio Arriba Co, NM



12. CHECK APPROPRIATE BOX TO INDICATE NATURE OF NOTICE, REPORT, OTHER DATA

Type of Submission

☒ Notice of Intent

☐ Subsequent Report

☐ Final Abandonment

Type of Action

☐ Abandonment

☐ Recompletion

☐ Plugging Back

☐ Casing Repair

☐ Altering Casing

☒ Other - Add Fruitland Coal Formation

☒ Change of Plans

☐ New Construction

☐ Non-Routine Fracturing

☐ Water Shut off

☐ Conversion to Injection

13. Describe Proposed or Completed Operations

It is intended to add the Basin Fruitland Coal formation to the already approved Pictured Cliffs formation of the Application for Permit to Drill, Deepen or Plug Back. Attached is a new C-102 plat and an Operations Plan. After completion, the well will be down hole commingled. A down hole commingle application will be submitted.

2002-07-29 14:47

14. I hereby certify that the foregoing is true and correct.

Signed Reggie Call Title Regulatory Supervisor Date 7/29/02  
no

(This space for Federal or State Office use)

APPROVED BY /s/ Joe Hewitt Title ACTING Date \_\_\_\_\_

CONDITION OF APPROVAL, if any:

Title 18 U.S.C. Section 1001, makes it a crime for any person knowingly and willfully to make any department or agency of the United States any false, fictitious or fraudulent statements or representations as to any matter within its jurisdiction.

NMOCD

DISTRICT I  
P.O. Box 1980, Hobbs, N.M. 88241-1980

DISTRICT II  
P.O. Drawer DD, Artesia, N.M. 88211-0719

DISTRICT III  
1000 Rio Brazos Rd., Aztec, N.M. 87410

DISTRICT IV  
P.O. Box 2088, Santa Fe, NM 87504-2088

State of New Mexico  
Energy, Minerals & Natural Resources Department

OIL CONSERVATION DIVISION

P.O. Box 2088  
Santa Fe, NM 87504-2088

Form C-102

Revised February 21, 1994

Instructions on back

Submit to Appropriate District Office

State Lease - 4 Copies

Fee Lease - 3 Copies

☐ AMENDED REPORT

WELL LOCATION AND ACREAGE DEDICATION PLAT

<sup>1</sup> API Number 30-039-26829	<sup>2</sup> Pool Code 72439/71629	<sup>3</sup> Pool Name South Blanco Pictured Cliffs / Basin Fruitland Coal
<sup>4</sup> Property Code 7462	<sup>5</sup> Property Name SAN JUAN 28-6 UNIT	<sup>6</sup> Well Number 233
<sup>7</sup> GRID No. 14538	<sup>8</sup> Operator Name BURLINGTON RESOURCES OIL & GAS INC.	<sup>9</sup> Elevation 6559

<sup>10</sup> Surface Location

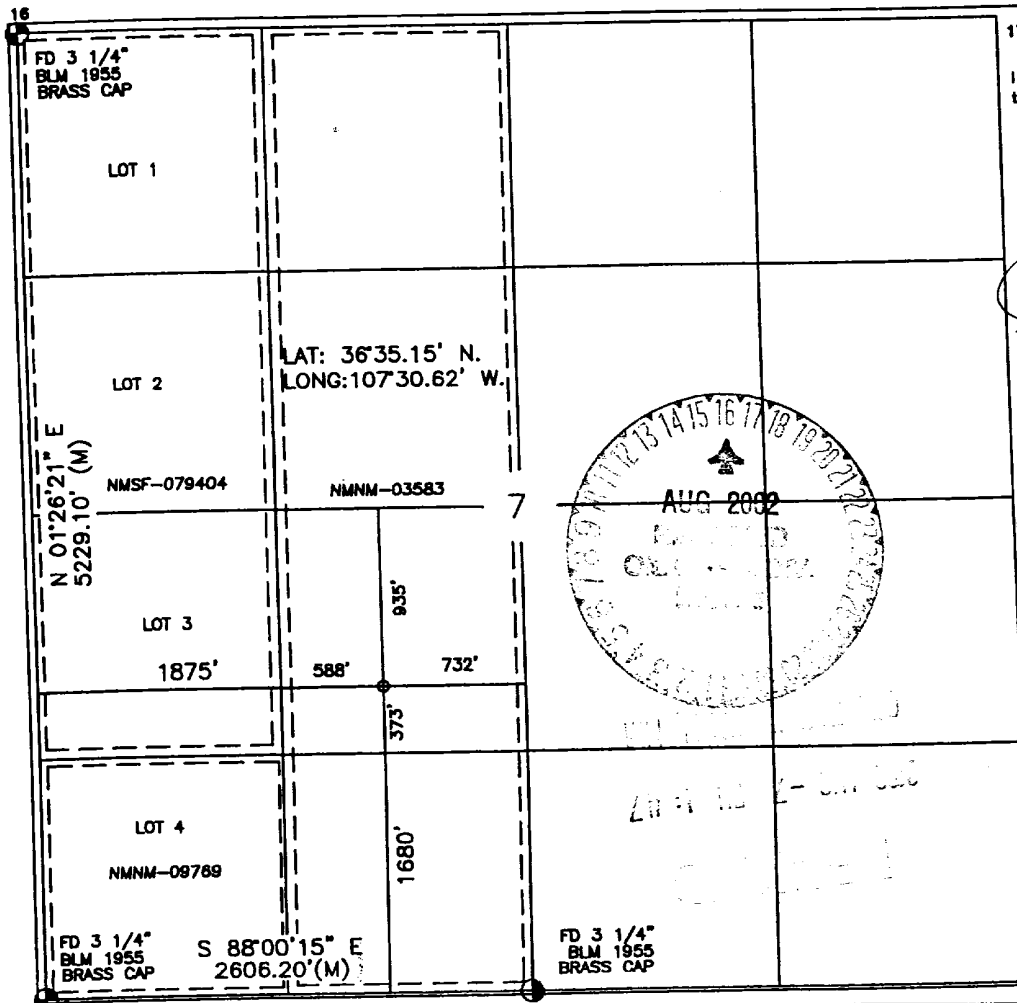
UL or lot no.	Section	Township	Range	Lot Idn	Feet from the	North/South line	Feet from the	East/West line	County
K	7	27-N	6-W		1680	SOUTH	1875	WEST	RIO ARriba

<sup>11</sup> Bottom Hole Location If Different From Surface

UL or lot no.	Section	Township	Range	Lot Idn	Feet from the	North/South line	Feet from the	East/West line	County

<sup>12</sup> Dedicated Acres FTC - W/315.68 PC - 158.16	<sup>13</sup> Joint or Int'l	<sup>14</sup> Consolidation Code	<sup>15</sup> Order No.
--	------------------------------	----------------------------------	-------------------------

NO ALLOWABLE WILL BE ASSIGNED TO THIS COMPLETION UNTIL ALL INTERESTS HAVE BEEN CONSOLIDATED OR A NON-STANDARD UNIT HAS BEEN APPROVED BY THE DIVISION



17 OPERATOR CERTIFICATION

I hereby certify that the information contained herein is true and complete to the best of my knowledge and belief

*Peggy Cole*  
Signature  
Peggy Cole  
Printed Name  
Regulatory Supervisor  
Title  
8-6-02  
Date

18 SURVEYOR CERTIFICATION

I hereby certify that the well location shown on this plat was plotted from field notes of actual surveys made by me or under my supervision, and that the same is true and correct to the best of my belief

8-7-02  
Date of Survey  
Signature and Seal of Professional Surveyor  
8894  
8894  
Certificate Number

ROY A. RUSH  
NEW MEXICO  
REGISTERED PROFESSIONAL LAND SURVEYOR  
8894

## OPERATIONS PLAN

**Well Name:** San Juan 28-6 Unit #233  
**Location:** 1680' FSL, 1875' FWL, Section 7, T-27-N, R-6-W  
Rio Arriba County, New Mexico  
Latitude 36° 35.15, Longitude 107° 30.62  
**Formation:** Basin Fruitland Coal/South Blanco Pictured Cliffs  
**Elevation:** 6559' GL

<b>Formation:</b>	<b>Top</b>	<b>Bottom</b>	<b>Contents</b>
Surface	San Jose	2504'	
Ojo Alamo	2504'	2571'	aquifer
Kirtland	2571'	2961'	gas
Fruitland	2961'	3176'	gas
Pictured Cliffs	3176'		gas
Total Depth	3375'		

**Logging Program:**

Open hole - Surface to TD - ARI, 2375' to TD - CNL-CDL  
Cased hole - Surface to TD - CBL-CCL-GR

**Coring Program:** None

**Mud Program:**

<u>Interval</u>	<u>Type</u>	<u>Weight</u>	<u>Vis.</u>	<u>Fluid Loss</u>
0- 120'	Spud	8.4-9.0	40-50	no control
120-3375'	FW	8.4-9.0	32-45	no control

**Casing Program (as listed, equivalent, or better):**

<u>Hole Size</u>	<u>Depth Interval</u>	<u>Csg.Size</u>	<u>Wt.</u>	<u>Grade</u>
9 7/8"	0 - 120'	7"	20.0#	J-55
6 1/4"	0 - 3375'	4 1/2"	10.5#	J-55

**Tubing Program:** 0' -3375' 2 3/8" 4.7# J-55

**Float Equipment:** 7" surface casing - saw tooth guide shoe.  
Centralizers will be run in accordance with Onshore Order #2.

4 1/2" production casing - float shoe on bottom. Three centralizers run every other joint above shoe. Seven centralizers run every 3rd joint to the base of the Ojo Alamo @ 2571'. Two turbolizing type centralizers - one below and one into the base of the Ojo Alamo @ 2571'. Standard centralizers thereafter every fourth joint up to the base of the surface pipe.

**Wellhead Equipment:** 7" x 4 1/2" 2000 psi screw on independent wellhead.

**Cementing:**

7" surface casing - cement with 27 sx Class A, B Portland Type I, II cement (32 cu.ft. of slurry, bring cement to surface through 3/4" line).  
WOC 8 hrs. Test casing to 600 psi for 30 minutes.

4 1/2" production casing - Lead w/186 sx Premium Lite cement w/3% calcium chloride, 1/4 pps Celloflake, 5 pps LCM-1, 0.4% FL-52, 0.4% SMS. Tail w/90 sx Type III cement w/1% calcium chloride, 1/4 pps Celloflake, and 0.2% FL-52 (519 cu.ft. of slurry, 50% excess to circulate to surface).

Note: If open hole logs are run, cement volumes will be based on 25% excess over caliper volumes.

**BOP and tests:**

Surface to TD - 11" 2000 psi (minimum double gate BOP stack (Reference Figure #1). Prior to drilling out surface casing, test rams to 600 psi/30 min.

Completion - 6" 2000 psi (minimum) double gate BOP stack (Reference Figure #2). Prior to completion operations, test rams and casing to 2000 psi/15 min.

From surface to TD - choke manifold (Reference Figure #3).

Pipe rams will be actuated to least once each day and blind rams actuated once each trip to test proper functioning. An upper kelly cock valve with handle and drill string safety valves to fit each drill string will be maintained and available on the rig floor.

**BOP and tests (if a coiled tubing drilling rig is utilized):**

Surface to TD: 7 1/16" 2000 psi (minimum) Torus annular BOP stack (Reference Figure #1B). Prior to drilling out surface casing, test annular BOP to 600 psi/30 minutes.

Completion: 7 1/16" 2000 psi (minimum) double gate BOP stack (Reference Figure #2). Prior to completion operations, test blind rams and casing to 1500 psi/30 minutes; all pipe rams and casing to 1500 psi/30 minutes each.

From surface to TD: choke manifold (Reference Figure #3).

The annular BOP will be actuated to close on drill pipe (coiled tubing) at least once each day and to close on open hole once each trip to test proper functioning.

**Additional information:**

- \* The Fruitland Coal and Pictured Cliffs formations will be completed and commingled.
- \* Anticipated pore pressure for the Pictured Cliffs is 500 psi.
- \* This gas is dedicated.
- \* The west half of Section 7 is dedicated to the Fruitland Coal and the southwest quarter of Section 7 is dedicated to the Pictured Cliffs.

Sean F. Corrigan  
Drilling Engineer

8/5/02  
Date