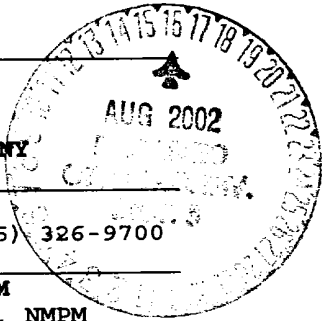


submitted in lieu of Form 3160-5

UNITED STATES
DEPARTMENT OF THE INTERIOR
BUREAU OF LAND MANAGEMENT

Sundry Notices and Reports on Wells

<p>1. Type of Well GAS</p> <p>2. Name of Operator BURLINGTON RESOURCES OIL & GAS COMPANY</p> <p>3. Address & Phone No. of Operator PO Box 4289, Farmington, NM 87499 (505) 326-9700</p> <p>4. Location of Well, Footage, Sec., T, R, M 1600' FNL, 930' FEL, Sec.6, T-27-N, R-6-W, NMPM</p>	<p>5. Lease Number SFSF079051</p> <p>6. If Indian, All. or Tribe Name</p> <p>7. Unit Agreement Name San Juan 28-6 Unit</p> <p>8. Well Name & Number San Juan 28-6 U #230</p> <p>9. API Well No. 30-039-26834</p> <p>10. Field and Pool Basin Fruitland Coal/ So Blanco Pict Cliffs</p> <p>11. County and State Rio Arriba Co, NM</p>
---	--



12. CHECK APPROPRIATE BOX TO INDICATE NATURE OF NOTICE, REPORT, OTHER DATA

Type of Submission	Type of Action	
<input checked="" type="checkbox"/> Notice of Intent	<input type="checkbox"/> Abandonment	<input checked="" type="checkbox"/> Change of Plans
<input type="checkbox"/> Subsequent Report	<input type="checkbox"/> Recompletion	<input type="checkbox"/> New Construction
<input type="checkbox"/> Final Abandonment	<input type="checkbox"/> Plugging Back	<input type="checkbox"/> Non-Routine Fracturing
	<input type="checkbox"/> Casing Repair	<input type="checkbox"/> Water Shut off
	<input type="checkbox"/> Altering Casing	<input type="checkbox"/> Conversion to Injection
	<input checked="" type="checkbox"/> Other - Add Fruitland Coal Formation	

13. Describe Proposed or Completed Operations

It is intended to add the Basin Fruitland Coal formation to the already approved Pictured Cliffs formation of the Application for Permit to Drill, Deepen or Plug Back. Attached is a new C-102 plat and an Operations Plan. After completion, the well will be down hole commingled. A down hole commingle application will be submitted.

RECEIVED
 2002 AUG 14 7:00 AM
 BLM

14. I hereby certify that the foregoing is true and correct.

Signed *Shirley Cole* Title Regulatory Supervisor Date 7/29/02
no

(This space for Federal or State Office use)
APPROVED BY *Joe Howitt* Title ACTD Date AUG 14
CONDITION OF APPROVAL, if any:

Title 18 U.S.C. Section 1001, makes it a crime for any person knowingly and willfully to make any department or agency of the United States any false, fictitious or fraudulent statements or representations as to any matter within its jurisdiction.

RMOCOD

DISTRICT I
1626 N. French Dr., Hobbs, N.M. 88240

State of New Mexico
Energy, Minerals & Natural Resources Department

Form C-102
Revised August 15, 2000

DISTRICT II
611 South First, Artesia, N.M. 88210

Submit to Appropriate District Office
State Lease - 4 Copies
Fee Lease - 3 Copies

DISTRICT III
1000 Rio Brazos Rd., Artec, N.M. 87410

OIL CONSERVATION DIVISION

2040 South Pacheco
Santa Fe, NM 87505

AMENDED REPORT

DISTRICT IV
2040 South Pacheco, Santa Fe, NM 87505

WELL LOCATION AND ACREAGE DEDICATION PLAT

¹ API Number 30-039-26834	² Pool Code 72439/71629	³ Pool Name South Blanco Pictured Cliffs/Basin Fruitland Coal
⁴ Property Code 7462	⁵ Property Name SAN JUAN 28-6 UNIT	
⁶ OGRID No. 14538	⁷ Operator Name BURLINGTON RESOURCES OIL AND GAS, INC.	⁸ Well Number 230
		⁹ Elevation 6516'

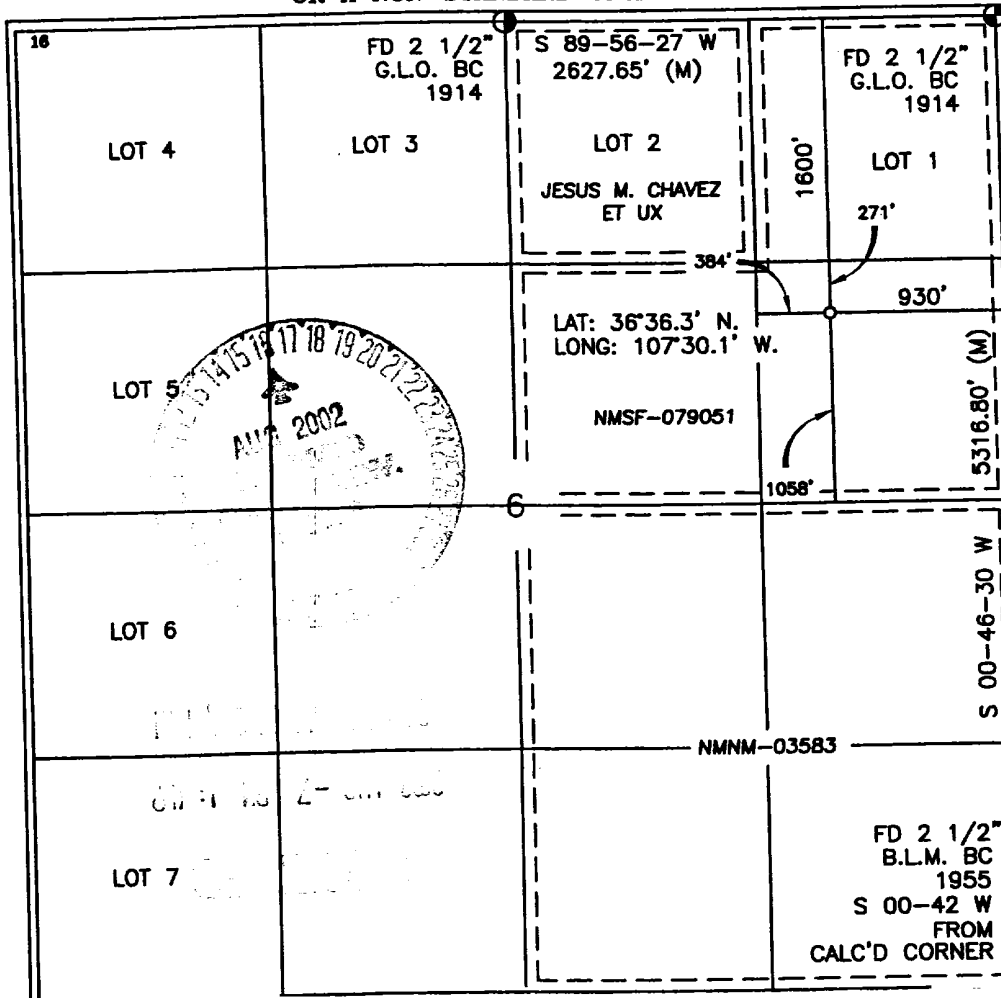
¹⁰ Surface Location

UL or lot no.	Section	Township	Range	Lot Idn	Feet from the	North/South line	Feet from the	East/West line	County
H	6	27-N	6-W		1600'	NORTH	930'	EAST	RIO ARRIBA

¹¹ Bottom Hole Location If Different From Surface

UL or lot no.	Section	Township	Range	Lot Idn	Feet from the	North/South line	Feet from the	East/West line	County
					¹² Joint or Infill	¹³ Consolidation Code	¹⁴ Order No.		
¹⁵ Dedicated Acres FTC - E/320.48 PC - 160.48									

NO ALLOWABLE WILL BE ASSIGNED TO THIS COMPLETION UNTIL ALL INTERESTS HAVE BEEN CONSOLIDATED OR A NON-STANDARD UNIT HAS BEEN APPROVED BY THE DIVISION



17 OPERATOR CERTIFICATION

I hereby certify that the information contained herein is true and complete to the best of my knowledge and belief.

Peggy Cole
Signature
Peggy Cole
Printed Name
Regulatory Supervisor
Title
8-6-02
Date

18 SURVEYOR CERTIFICATION

I hereby certify that the well location shown on this plat was plotted from field notes of actual surveys made by me or under my supervision, and that the same is true and correct to the best of my belief.

8-1-02
Date of Survey
Roy A. Rush
Signature
ROY A. RUSH
REGISTERED PROFESSIONAL LAND SURVEYOR
NEW MEXICO
8394
8894
Certificate Number

OPERATIONS PLAN

Well Name: San Juan 28-6 Unit #230
Location: 1600' FNL, 930' FEL, Section 6, T-27-N, R-6-W
Rio Arriba County, New Mexico
Latitude 36° 36.3, Longitude 107° 30.1
Formation: Basin Fruitland Coal/South Blanco Pictured Cliffs
Elevation: 6516' GL

Formation:	Top	Bottom	Contents
Surface	San Jose	2517'	
Ojo Alamo	2517'	2568'	aquifer
Kirtland	2568'	2986'	gas
Fruitland	2986'	3208'	gas
Pictured Cliffs	3208'		gas
Total Depth	3410'		

Logging Program:

Open hole - Surface to TD - ARI, 2410' to TD - CNL-CDL
Cased hole - Surface to TD - CBL-CCL-GR

Coring Program: None

Mud Program:

<u>Interval</u>	<u>Type</u>	<u>Weight</u>	<u>Vis.</u>	<u>Fluid Loss</u>
0- 120'	Spud	8.4-9.0	40-50	no control
120-3410'	FW	8.4-9.0	32-45	no control

Casing Program (as listed, equivalent, or better):

<u>Hole Size</u>	<u>Depth Interval</u>	<u>Csg. Size</u>	<u>Wt.</u>	<u>Grade</u>
9 7/8"	0 - 120'	7"	20.0#	J-55
6 1/4"	0 - 3410'	4 1/2"	10.5#	J-55

Tubing Program: 0' -3410' 2 3/8" 4.7# J-55

Float Equipment: 7" surface casing - saw tooth guide shoe.
Centralizers will be run in accordance with Onshore Order #2.

4 1/2" production casing - float shoe on bottom. Three centralizers run every other joint above shoe. Seven centralizers run every 3rd joint to the base of the Ojo Alamo @ 2568'. Two turbolizing type centralizers - one below and one into the base of the Ojo Alamo @ 2568'. Standard centralizers thereafter every fourth joint up to the base of the surface pipe.

Wellhead Equipment: 7" x 4 1/2" 2000 psi screw on independent wellhead.

Cementing:

7" surface casing - cement with 27 sx Class A, B Portland Type I, II cement (32 cu.ft. of slurry, bring cement to surface through 3/4" line).
WOC 8 hrs. Test casing to 600 psi for 30 minutes.

4 1/2" production casing - Lead w/189 sx Premium Lite cement w/3% calcium chloride, 1/4 pps Celloflake, 5 pps LCM-1, 0.4% FL-52, 0.4% SMS. Tail w/90 sx Type III cement w/1% calcium chloride, 1/4 pps Celloflake, and 0.2% FL-52 (525 cu.ft. of slurry, 50% excess to circulate to surface).

Note: If open hole logs are run, cement volumes will be based on 25% excess over caliper volumes.

BOP and tests:

Surface to TD - 11" 2000 psi (minimum double gate BOP stack (Reference Figure #1). Prior to drilling out surface casing, test rams to 600 psi/30 min.

Completion - 6" 2000 psi (minimum) double gate BOP stack (Reference Figure #2). Prior to completion operations, test rams and casing to 2000 psi/15 min.

From surface to TD - choke manifold (Reference Figure #3).

Pipe rams will be actuated to least once each day and blind rams actuated once each trip to test proper functioning. An upper kelly cock valve with handle and drill string safety valves to fit each drill string will be maintained and available on the rig floor.

BOP and tests (if a coiled tubing drilling rig is utilized):

Surface to TD: 7 1/16" 2000 psi (minimum) Torus annular BOP stack (Reference Figure #1B). Prior to drilling out surface casing, test annular BOP to 600 psi/30 minutes.

Completion: 7 1/16" 2000 psi (minimum) double gate BOP stack (Reference Figure #2). Prior to completion operations, test blind rams and casing to 1500 psi/30 minutes; all pipe rams and casing to 1500 psi/30 minutes each.

From surface to TD: choke manifold (Reference Figure #3).

The annular BOP will be actuated to close on drill pipe (coiled tubing) at least once each day and to close on open hole once each trip to test proper functioning.

Additional information:

- * The Fruitland Coal and the Pictured Cliffs formation will be completed.
- * Anticipated pore pressure for the Pictured Cliffs is 500 psi.
- * This gas is dedicated.
- * The east half of Section 6 is dedicated to the Fruitland Coal and the northeast quarter of Section 6 is dedicated to the Pictured Cliffs.

Sean J. Corrigan
Drilling Engineer

8/6/02
Date