

District I  
PO Box 1980, Hobbs, NM 88241-1980  
District II  
811 South First, Artesia, NM 88210  
District III  
1000 Rio Brazos Rd., Aztec, NM 87410  
District IV

Energy, Minerals & Natural Resources Department

OIL CONSERVATION DIVISION  
2040 South Pacheco  
Santa Fe, NM 87505

Form C-101  
Revised October 18, 1994  
Instructions on back  
Submit to Appropriate District Office  
State Lease - 6 Copies  
Fee Lease - 5 Copies  
AMENDED REPORT

APPLICATION FOR PERMIT TO DRILL, RE-ENTER, DEEPEN, PLUGBACK, OR ADD A ZONE

<sup>1</sup> Operator Name and Address. Burlington Resources Oil & Gas Company LP PO Box 4289, Farmington, NM 87499		<sup>2</sup> OGRID Number 14538
		<sup>3</sup> API Number 30 - 039- 26964
<sup>4</sup> Property Code 7454	<sup>5</sup> Property Name San Juan 27-5 Unit	<sup>6</sup> Well No. 152J

<sup>7</sup> Surface Location

UL or lot no.	Section	Township	Range	Lot Idn	Feet from the	North/South line	Feet from the	East/West line	County
F	16	27N	5W		1530'	North	1970'	West	Rio Arriba

<sup>8</sup> Proposed Bottom Hole Location If Different From Surface

UL or lot no.	Section	Township	Range	Lot Idn	Feet from the	North/South line	Feet from the	East/West line	County

<sup>9</sup> Proposed Pool 1 Tapacito Pictured Cliffs	<sup>10</sup> Proposed Pool 2
--	-------------------------------

<sup>11</sup> Work Type Code N	<sup>12</sup> Well Type Code G	<sup>13</sup> Cable/Rotary Rotary	<sup>14</sup> Lease Type Code S	<sup>15</sup> Ground Level Elevation 6600' GR
<sup>16</sup> Multiple N	<sup>17</sup> Proposed Depth 3575'	<sup>18</sup> Formation Pictured Cliffs	<sup>19</sup> Contractor N/a	<sup>20</sup> Spud Date N/a

<sup>21</sup> Proposed Casing and Cement Program

Hole Size	Casing Size	Casing weight/foot	Setting Depth	Cu.ft. of Cement	Estimated TOC
12 1/4"	9 5/8"	32.3#	200'	188 cu.ft.	Surface
8 3/4"	7"	20#	3401'	1150 cu.ft.	Surface
6 1/4"	N/A	N/A	3575'	N/A	

<sup>22</sup> Describe the proposed program. If this application is to DEEPEN or PLUG BACK give the data on the present productive zone and proposed new productive zone. Describe the blowout prevention program, if any. Use additional sheets if necessary.

11" 2000 psi minimum double gate BOP

Open hole completion

<sup>23</sup> I hereby certify that the information given above is true and complete to the best of my knowledge and belief. Signature: <i>Peggy Cole</i> Printed name: Peggy Cole Title: Regulatory/Compliance Supervisor Date: 4-1-02 Phone: 505-326-9700		<p>OIL CONSERVATION DIVISION</p> <p>Approved by: <i>[Signature]</i> Title: <i>DEPUTY OIL &amp; GAS INSPECTOR, INT. DIV.</i></p> <p>Approval Date: APR - 2 2002 Expiration Date: APR - 2 2003</p> <p>Conditions of Approval : Attached <input type="checkbox"/></p>	
--	--	--	--

HOLD COPY FOR hearing order for in fill pilot test

DISTRICT I  
1625 N. French Dr., Hobbs, N.M. 88240

DISTRICT II  
811 South First, Artesia, N.M. 88210

DISTRICT III  
1000 Rio Brazos Rd., Aztec, N.M. 87410

DISTRICT IV  
2040 South Pacheco, Santa Fe, NM 87505

State of New Mexico  
Energy, Minerals & Natural Resources Department

Form C-102  
Revised August 15, 2000

Submit to Appropriate District Office  
State Lease - 4 Copies  
Fee Lease - 3 Copies

OIL CONSERVATION DIVISION  
2040 South Pacheco  
Santa Fe, NM 87505

☐ AMENDED REPORT

WELL LOCATION AND ACREAGE DEDICATION PLAT

<sup>1</sup> API Number 30-039- <i>26964</i>	<sup>2</sup> Pool Code 85920	<sup>3</sup> Pool Name Tapacito Picturad Cliffs
<sup>4</sup> Property Code 7454	<sup>5</sup> Property Name SAN JUAN 27-5 UNIT	<sup>6</sup> Well Number 152J
<sup>7</sup> GRID No. 14538	<sup>8</sup> Operator Name BURLINGTON RESOURCES OIL & GAS, INC.	<sup>9</sup> Elevation 6600'

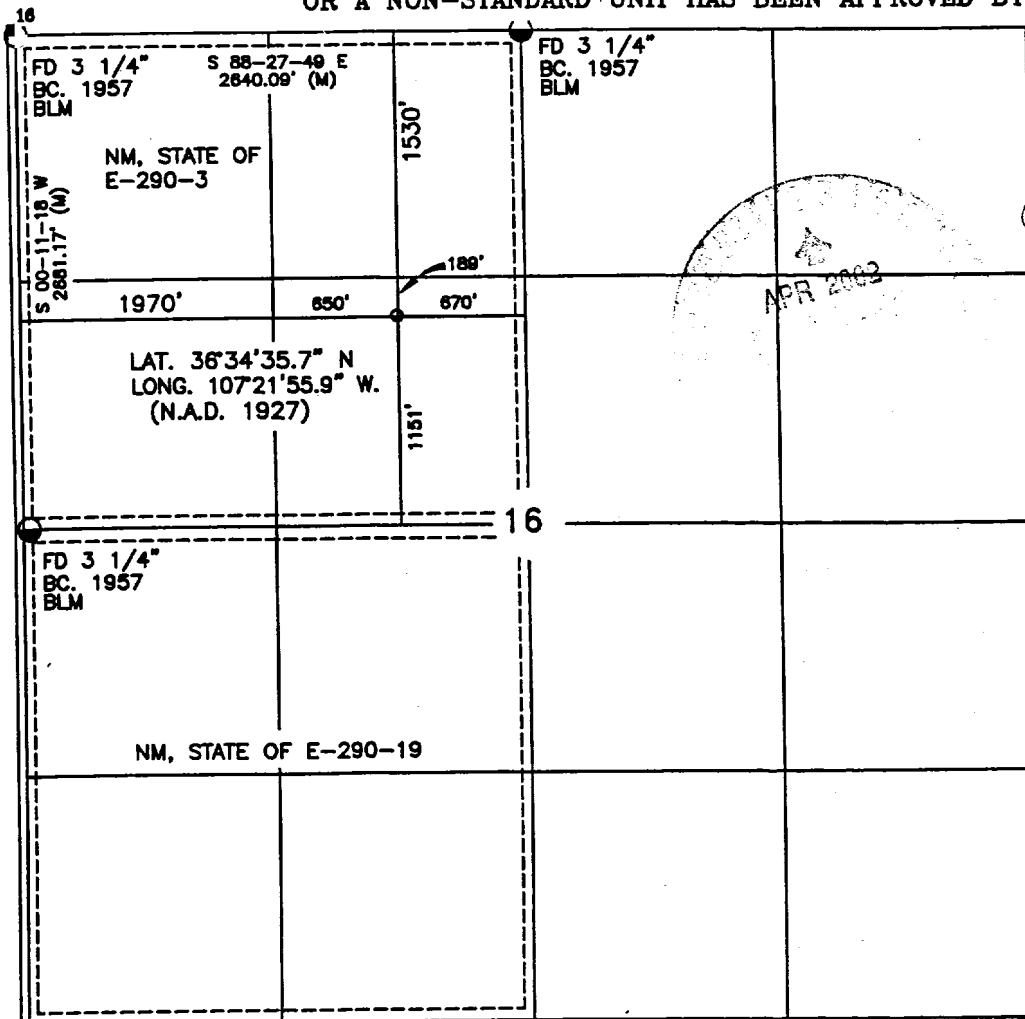
<sup>10</sup> Surface Location

UL or lot no.	Section	Township	Range	Lot Idn	Feet from the	North/South line	Feet from the	East/West line	County
F	16	27-N	5-W		1530	NORTH	1970	WEST	RIO ARRIBA

<sup>11</sup> Bottom Hole Location If Different From Surface

UL or lot no.	Section	Township	Range	Lot Idn	Feet from the	North/South line	Feet from the	East/West line	County
<sup>12</sup> Dedicated Acres PC-160			<sup>13</sup> Joint or Infill		<sup>14</sup> Consolidation Code 160 acres for density 320 acres for revenue		<sup>15</sup> Order No. purposes for the Picturad Cliffs purposes for the Picturad Cliffs		

NO ALLOWABLE WILL BE ASSIGNED TO THIS COMPLETION UNTIL ALL INTERESTS HAVE BEEN CONSOLIDATED  
OR A NON-STANDARD UNIT HAS BEEN APPROVED BY THE DIVISION



17 OPERATOR CERTIFICATION

I hereby certify that the information contained herein  
is true and complete to the best of my knowledge and  
belief.

*Peggy Cole*  
Signature

Peggy Cole

Printed Name

Regulatory Supervisor

Title

3-25-02

Date

18 SURVEYOR CERTIFICATION

I hereby certify that the well location shown on this plat  
was plotted from field notes of actual surveys made by  
me or under my supervision, and that the same is true  
and correct to the best of my knowledge and belief.

*[Signature]*  
Signature and Seal of Professional Surveyor

NEW MEXICO  
8894  
PROFESSIONAL LAND SURVEYOR

Certificate Number