


APPLICATION FOR PERMIT TO DRILL OR REENTER

1a. Type of Work: <input checked="" type="checkbox"/> DRILL <input type="checkbox"/> REENTER		7. If Unit or CA Agreement, Name and N NMNM78408C	
1b. Type of Well: <input type="checkbox"/> Oil Well <input checked="" type="checkbox"/> Gas Well <input type="checkbox"/> Other <input checked="" type="checkbox"/> Single Zone <input type="checkbox"/> Multiple Zone		8. Lease Name and Well No. SAN JUAN 27-4 UNIT 31Y	
2. Name of Operator BURLINGTON RESOURCES O&G CO LP Contact: PEGGY COLE E-Mail: pcole@br-inc.com		9. API Well No. 30-039-27025	
3a. Address P O BOX 4289 FARMINGTON, NM 87499		3b. Phone No. (include area code) Ph: 505.326.9727 Fx: 505.326.9781	
4. Location of Well (Report location clearly and in accordance with any State requirements. *) At surface SENW 1380FNL 2020FWL 36.05917 N Lat, 107.29333 W Lon At proposed prod. zone		10. Field and Pool, or Exploratory BLANCO MESAVERDE	
11. Sec., T., R., M., or Blk. and Survey or F Sec 7 T27N R4W Mer NMP		12. County or Parish RIO ARRIBA	
13. Distance in miles and direction from nearest town or post office* 18 MILES FROM GOBERNADOR		14. Distance from proposed location to nearest property or lease line, ft. (Also to nearest drig. unit line, if any) 1380	
15. No. of Acres in Lease		16. Spacing Unit dedicated to this well 321.56 WJ	
17. Distance from proposed location to nearest well, drilling, completed, applied for, on this lease, ft. 2000		18. Proposed Depth 6340 MD 6340 TVD	
19. Elevations (Show whether DF, KB, RT, GL, etc. 6923 GL		20. Approximate date work will start 06/03/2002	
21. Estimated duration		22. Attachments	
23. Estimated duration		24. Attachments	

The following, completed in accordance with the requirements of Onshore Oil and Gas Order No. 1, shall be attached to this form:

- | | |
|--|---|
| <ol style="list-style-type: none"> 1. Well plat certified by a registered surveyor. 2. A Drilling Plan. 3. A Surface Use Plan (if the location is on National Forest System Lands, the SUPO shall be filed with the appropriate Forest Service Office). | <ol style="list-style-type: none"> 4. Bond to cover the operations unless covered by an existing bond on file Item 20 above). 5. Operator certification 6. Such other site specific information and/or plans as may be required by authorized officer. |
|--|---|

25. Signature (Electronic Submission)		Name (Printed/Typed) PEGGY COLE	Date 06/03/20
Title REGULATORY ADMINISTRATOR			
Approved by (Signature) 		Name (Printed/Typed)	Date JUN - 5 200
Title AFM (Acting)		Office	

Application approval does not warrant or certify the applicant holds legal or equitable title to those rights in the subject lease which would entitle the applicant to co-operations thereon.
Conditions of approval, if any, are attached.

Title 18 U.S.C. Section 1001 and Title 43 U.S.C. Section 1212, make it a crime for any person knowingly and willfully to make to any department or agency of the United States any false, fictitious or fraudulent statements or representations as to any matter within its jurisdiction.

Additional Operator Remarks (see next page)

Electronic Submission #11725 verified by the BLM Well Information System
For BURLINGTON RESOURCES O&G CO LP, sent to the Farmington
Committed to AFMSS for processing by Geneva McDougall on 06/04/2002 (02GXM0178AE)

NMCCO

District I
PO Box 1900, Hobbs, NM 88241-1900

District II
PO Drawer 00, Artesia, NM 88211-0719

District III
1000 Rio Arriba Rd, Aztec, NM 87410

District IV
PO Box 2088, Santa Fe, NM 87504-2088

State of New Mexico
Energy, Minerals & Natural Resources Department

OIL CONSERVATION DIVISION
PO Box 2088
Santa Fe, NM 87504-2088

Form O-102
Revised February 21, 1994
Instructions on Back
Submit to Appropriate District Office
State Lease - 4 Copies
Fee Lease - 3 Copies

AMENDED REPORT

WELL LOCATION AND ACREAGE DEDICATION PLAT

API Number 10-039- 27025	Foot Code 72319	Pool Name Blanco Mesaverde
Property Code 7452	Property Name SAN JUAN 27-4 UNIT	Well Number 31Y
OSRD No. 14538	Operator Name BURLINGTON RESOURCES OIL & GAS COMPANY, LP	Elevation 6923'


10 Surface Location

IL or Lot No.	Section	Township	Range	Lot 1 or 2	Feet from line	North/South line	Feet from the	East/West line	County
F	7	27N	4W		1380	NORTH	2020	WEST	RIO ARriba

11 Bottom Hole Location If Different From Surface

IL or Lot No.	Section	Township	Range	Lot 1 or 2	Feet from the	North/South line	Feet from the	East/West line	County
Dedicated Acres 1321.56 ✓					Point or Initial	Consolidation Code	Order No.		

NO ALLOWABLE WILL BE ASSIGNED TO THIS COMPLETION UNTIL ALL INTERESTS HAVE BEEN CONSOLIDATED OR A NON-STANDARD UNIT HAS BEEN APPROVED BY THE DIVISION

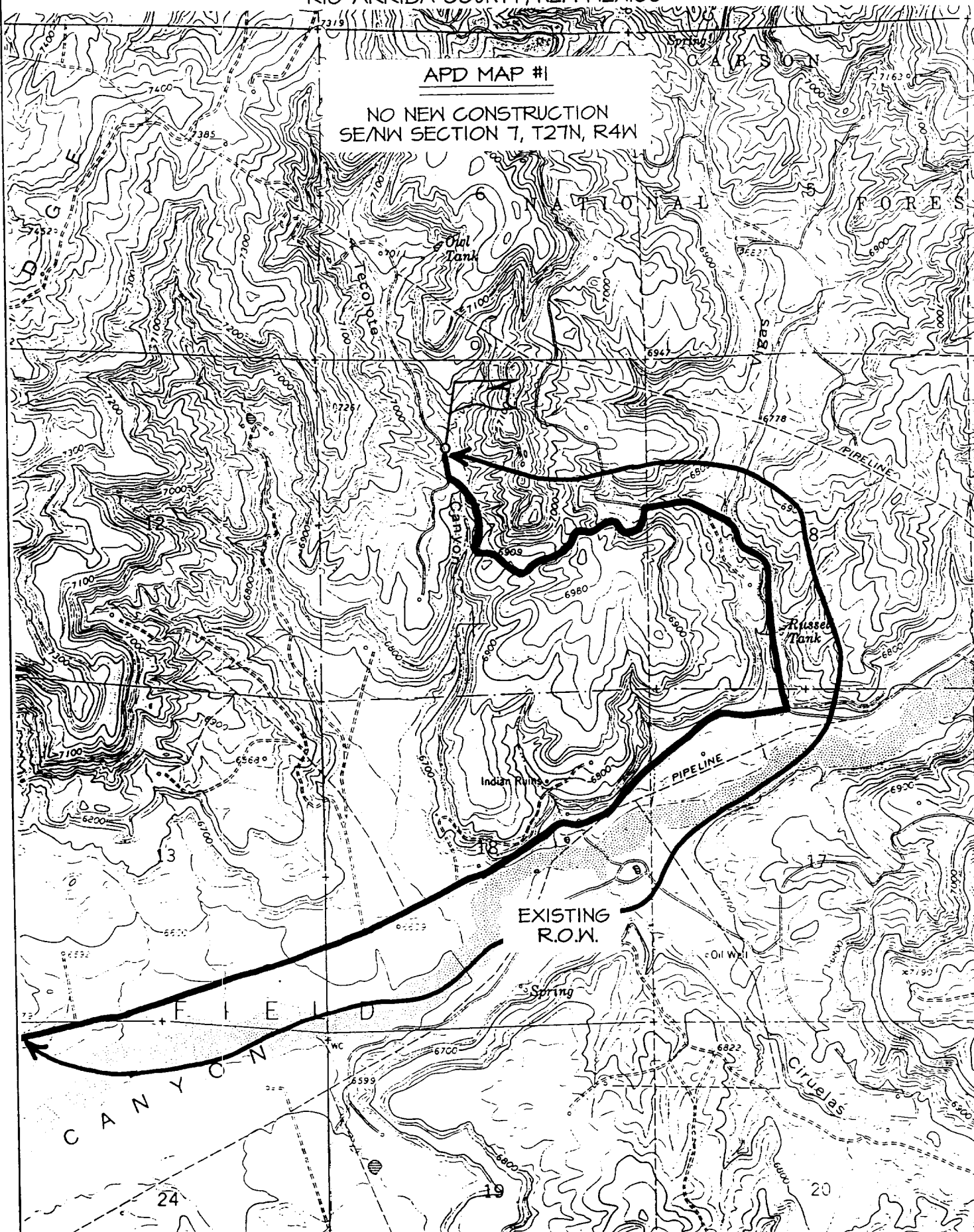
15 1338.48'	1320.00'	2540.00'	17 OPERATOR CERTIFICATION I hereby certify that the information contained herein is true and complete to the best of my knowledge and belief. <i>Peggy Cole</i> Signature Peggy Cole Printed Name Regulatory Supervisor Title 6-3-02 Date
LOT 1	1380'		
2020'	LAT: 36°35.5' N LONG: 107°17.6' W		
LOT 2			
8 USA SF-080673	7		18 SURVEYOR CERTIFICATION I hereby certify that the well location shown on this plat was plotted from field notes of actual surveys made by me or under my supervision, and that the same is true and correct to the best of my belief. Date of Survey: JUNE 2, 2002 Signature and Seal of Professional Surveyor  JASON C. EDWARDS Certificate Number 15269
LOT 3			
LOT 4			
1327.26'	1320.00'	2540.00'	

BURLINGTON RESOURCES OIL & GAS COMPANY SAN JUAN 27-4 UNIT #31B

1395' FNL & 2025' FWL, SECTION 7, T27N, R4W, N.M.P.M.
RIO ARriba COUNTY, NEW MEXICO

APD MAP #1

NO NEW CONSTRUCTION
SE/NW SECTION 7, T27N, R4W



OPERATIONS PLAN

Well Name: San Juan 27-4 Unit #31Y
Location: 1380' N, 1300' E, Section 1, T-12-N, R-4-W
Rio Arriba County, New Mexico
Latitude 36° 25' N, Longitude 107° 17' W
Formation: Blanco Mesa Verde
Elevation: 5923' ASL

<u>Formation Tops:</u>	<u>Top</u>	<u>Bottom</u>	<u>Contents</u>
Surface	San Jose	3172'	
Ojo Alamo	3172'	3336'	aquifer
Kirtland	3336'	3428'	
Fruitland	3428'	3789'	gas
Pictured Cliffs	3789'	3878'	gas
Lewis	3878'	4338'	gas
Intermediate TD	4128'		
Huerfano Bentonite	4338'	4749'	gas
Chacra	4749'	5568'	gas
Massive Cliff House	5568'	5618'	gas
Menefee	5618'	5940'	gas
Point Lookout	5940'		gas
Total Depth	6340'		

Logging Program:

Mud Logs/Coring/DST -
Mud logs - none
Coring - none
DST - none
Cased hole - Gamma Ray, Cement bond surface to TD

Mud Program:

Interval MD	Type	Weight	Vis.	Fluid Loss
0- 350'	Spud	8.4-9.0	40-50	no control
350- 4128'	LSND	8.4-9.0	30-60	no control
4128- 6340'	Air/Mist/N2*	n/a	n/a	n/a

Pit levels will be visually monitored to detect gain or loss of fluid control.

*Nitrogen might be used in conjunction with or instead of air to prevent a down hole fire.

Casing Program (as listed, the equivalent, or better):

Hole Size	Measured Depth	Csg Size	Weight	Grade
12 1/4"	0' - 350'	9 5/8"	32.3#	H-40
8 3/4"	0' - 4128'	7"	30.0#	J-55
6 1/4"	4028' - 6340'	4 1/2"	10.5#	J-55

Tubing Program: 0' - 6340' 2 7/8" 4.7# J-55

BOP Specifications, Wellhead and Tests:

Surface to Intermediate TD -

11" 2000 psi minimum double gate BOP stack (Reference Figure #1). After nipple up prior to drilling out surface casing, rams and casing will be tested to 600 psi for 30 minutes.

Intermediate TD to Total Depth -

11" 2000 psi minimum double gate BOP stack (Reference Figure #1). After nipple up prior to drilling out intermediate casing, rams and casing will be tested to 1500 psi for 30 minutes.

Surface to Total Depth -

3" nominal, 2000 psi minimum choke manifold (Reference Figure #3).

Completion Operations -

7 1/16" 2000 psi double gate BOP stack (Reference Figure #2). After make up prior to completion, pipe rams, casing and liner top will be tested to 2000 psi for 15 minutes.

Wellhead -

9 5/8" x 7" x 2 3/8" x 2000 psi tree assembly.

General -

- Pipe rams will be actuated once each day and blind rams will be actuated once each trip to test proper functioning.
- An upper kelly cock valve with handle available and drill string valves to fit each drill string will be available on the rig floors at all times.
- BOP pit level drill will be conducted weekly for each drill crew.
- All BOP tests & drills will be recorded in daily drilling reports.
- Blind and pipe rams will be equipped with extension hand wheels.

Cementing:

9 5/8" surface casing - cement with 233 sx Type III cement with 1/4# Celloflake/sx and 2% calcium chloride (329 cu.ft. of slurry, 200% excess to circulate to surface). WOC 8 hrs. Test casing to 600 psi for 30 minutes.

Saw tooth guide shoe on bottom. Bowspring centralizers will be run in accordance with Onshore Order #2.

7" intermediate casing alternative two stage: Stage collar at 3328'. First stage: cement with 116 sx Premium Lite cmt w/3% calcium chloride, 0.25 pps Celloflake, 5 pps LCM-1, 0.4% fluid loss, 0.4% SMS. Tailed w/90 sx Type III cmt w/1% calcium chloride, 0.25 pps Celloflake, 0.2% fluid loss. Second stage: 478 sx Premium Lite cmt w/3% calcium chloride, 0.25 pps Celloflake, 5 pps LCM-1, 0.4% fluid loss, 0.4% SMS (1267 cu.ft., 100% excess to circulate to surface).

Cement nose guide shoe on bottom with float collar spaced on top of shoe joint. Bowspring centralizers spaced every other joint off bottom, to the base of the Ojo Alamo at 3336'. Two circulating centralizers at the base of the Ojo Alamo at 3336'. Bowspring centralizers spaced every fourth joint from the base of the Ojo Alamo to the base of the surface casing.

4 1/2" Production Liner -

Cement to circulate liner top. Pump 169 sx Premium Lite cmt w/0.25 pps Celloflake, 0.3% CD-32, 6.25 pps LCM-1, 1% fluid loss (334 cu.ft., 40% excess to circulate liner top). WOC a minimum of 18 hrs prior to completing.

Note: If open hole logs are run, cement volumes will be based on 25% excess over caliper volumes.

Cement nose guide shoe on bottom with float collar spaced on top of shoe joint. The liner hanger will have a rubber packoff.

- If hole conditions permit, an adequate water spacer will be pumped ahead of each cement job to prevent cement/ mud contamination or cement hydration.

Cement nose guide shoe on bottom with float collar spaced on top of shoe joint. The liner hanger will have a rubber packoff.

- If hole conditions permit, an adequate water spacer will be pumped ahead of each cement job to prevent cement/ mud contamination or cement hydration.

Special Drilling Operations (Air/Mist Drilling):

The following equipment will be operational while air/mist drilling:

- An anchored blooie line will be utilized to discharge all cuttings and circulating medium to the blow pit a minimum of 100' from the wellhead.
- The blooie line will be equipped with an automatic igniter or pilot light.
- Compressors will be located a minimum of 100' from the wellhead in the opposite direction from the blooie line.
- Engines will have spark arresters or water cooled exhaust.
- The rotating head will be properly lubricated and maintained.
- A float valve will be utilized above the bit.
- Mud circulating equipment, water, and mud materials will be sufficient to maintain control of the well.

Additional Information:

- The Mesa Verde formation will be completed.
- No abnormal temperatures or hazards are anticipated.
- Anticipated pore pressures are as follows:

Fruitland Coal	300 psi
Pictured Cliffs	600 psi
Mesa Verde	700 psi
- Sufficient LCM will be added to the mud system to maintain well control, if lost circulation is encountered below the top of the Pictured Cliffs.
- The west half of Section 7 is dedicated to the Mesa Verde.
- This gas is dedicated.

Dean H. Long
Drilling Engineer

June 8, 2000
Date