



NEW MEXICO ENERGY, MINERALS and NATURAL RESOURCES DEPARTMENT

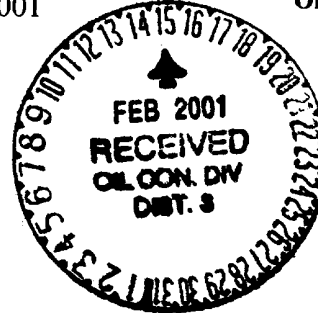
GARY E. JOHNSON
Governor
Jennifer A. Salisbury
Cabinet Secretary

February 13, 2001

Lori Wrotenbery
Director
Oil Conservation Division

Pure Resources
P. O. Box 850
Bloomfield, New Mexico 87413

Attention: Michael Phillips



Re Administrative application for an unorthodox gas well location in both the Blanco-Mesaverde and Basin-Dakota Pools for the proposed Rincon Unit Well No. 180-R to be drilled 2201' FNL & 1375' FWL (Unit F) of Section 21, Township 27 North, Range 6 West, NMPM, Rio Arriba County, New Mexico.

Dear Mr. Phillips:

Your application dated January 15, 2001 contains inadequate information. The following are just a few sample questions surrounding the application submitted. What is the dedicated acreage's for both zones? What other wells are in those units? You failed to provide me with a plat of the Rincon Unit Area? Is this indeed an unorthodox Blanco-Mesaverde well, see the special pool rules attached? Are there other locations considered to be standard that this well could be moved and avoid the pipeline? There was no plat of the pipeline included. What well is this to replace? Why? What will happen to the old well?

Consider this request denied.

Sincerely,

Michael E. Stogner
Chief Hearing Officer/Engineer

duplicate

cc: Steve Hayden, District Geologist - New Mexico Oil Conservation Division - Aztec
Charlie Ferrin, Deputy Inspector - Farmington
U. S. Bureau of Land Management - Farmington

102246045

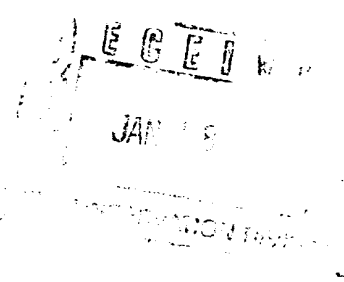
NSL

2/7/01



January 15, 2001

Attn: Michael Stogner
Chief Hearing Officer/Engineer
2040 South Pacheco Street
Sante Fe NM 87505



Subject: _____
Non Standard Location
Rincon Unit # 180R
Rio Arriba County, NM

Dear Sir:

Pure Resources is making application for approval of a non-standard location the Rincon Unit 180R. The well is to be a 160 acre replacement Dakota, an a 80 acre Mesa Verde infill. The standard location (1955' FNL and 1725' FWL sec 21, 27-N, 6-W) fell into topographical problems and also fell into the El Paso transfer pipeline. I staked an alternate location (2201' FNL and 1375' FWL sec. 21, 27-N, 6-W) this location is drillable and moves off of the El Paso pipeline

Should you have any questions in regards to this request, please feel free to contact me at (505) 632-1812.

Sincerely,

A handwritten signature in cursive script that reads "Micheal Phillips".

Micheal Phillips

P.O. BOX 850 • BLOOMFIELD NM • 87413
PHONE: 632-1812 • FAX: 632-0338

1625 N. French Dr., Hobbs, N.M. 88240

STATE OF NEW MEXICO
Energy, Minerals & Natural Resources Department

Form C-102
Revised August 15, 2000

DISTRICT II
811 South First, Artesia, N.M. 88210

DISTRICT III
1000 Rio Brazos Rd., Artesia, N.M. 87410

DISTRICT IV
2040 South Pacheco, Santa Fe, NM 87505

OIL CONSERVATION DIVISION
2040 South Pacheco
Santa Fe, NM 87505

Submit to Appropriate District Office
State Lease - 4 Copies
Fee Lease - 3 Copies

☐ AMENDED REPORT

WELL LOCATION AND ACREAGE DEDICATION PLAT

1 API Number		2 Pool Code		3 Pool Name	
4 Property Code		5 Property Name RINCON UNIT			6 Well Number 180R
7 OGBID No.		8 Operator Name PURE RESOURCES			9 Elevation 6633'

10 Surface Location

UL or lot no. F	Section 21	Township 27-N	Range 6-W	Lot Idn	Feet from the 2201'	North/South line NORTH	Feet from the 1375'	East/West line WEST	County RIO ARRIBA
--------------------	---------------	------------------	--------------	---------	------------------------	---------------------------	------------------------	------------------------	----------------------

11 Bottom Hole Location If Different From Surface

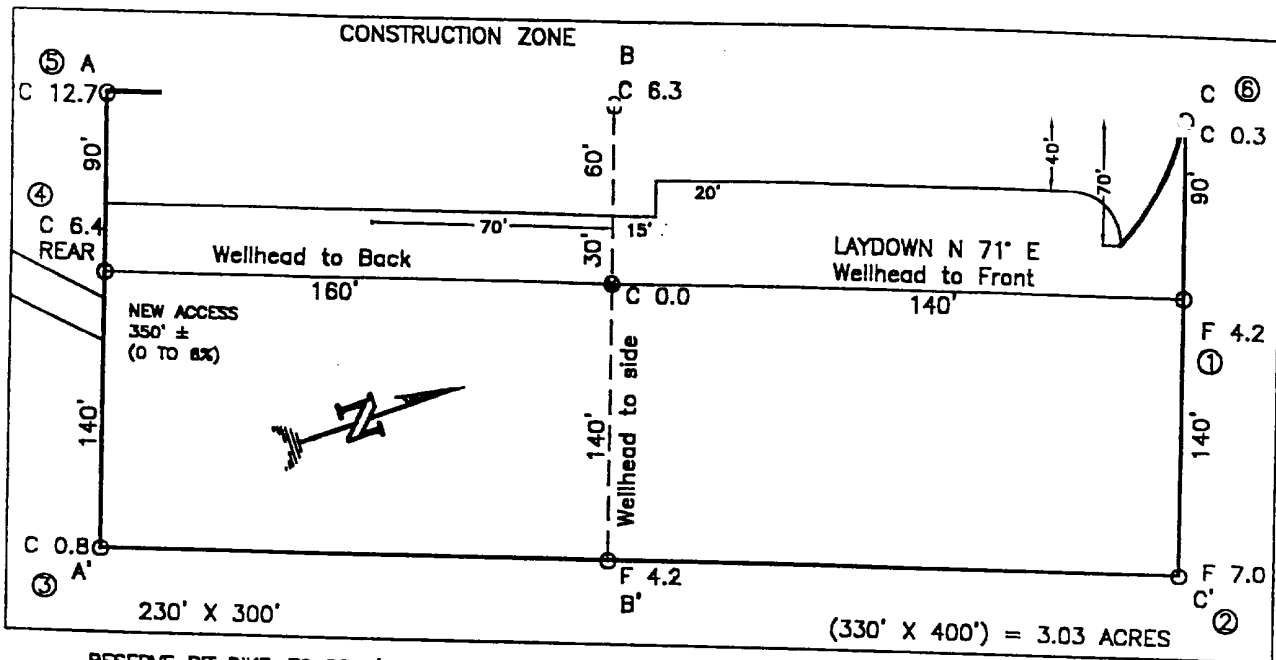
UL or lot no.	Section	Township	Range	Lot Idn	Feet from the	North/South line	Feet from the	East/West line	County
---------------	---------	----------	-------	---------	---------------	------------------	---------------	----------------	--------

12 Dedicated Acres		13 Joint or Infill	14 Consolidation Code	15 Order No.
--------------------	--	--------------------	-----------------------	--------------

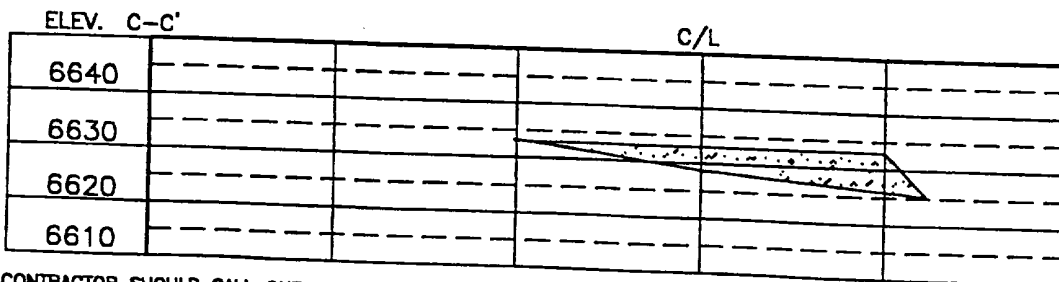
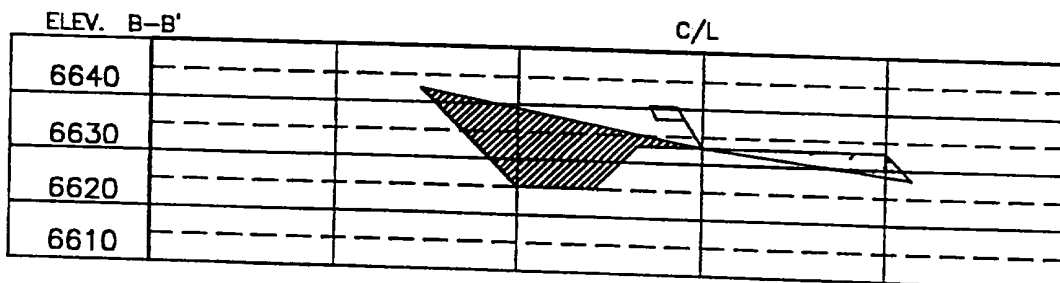
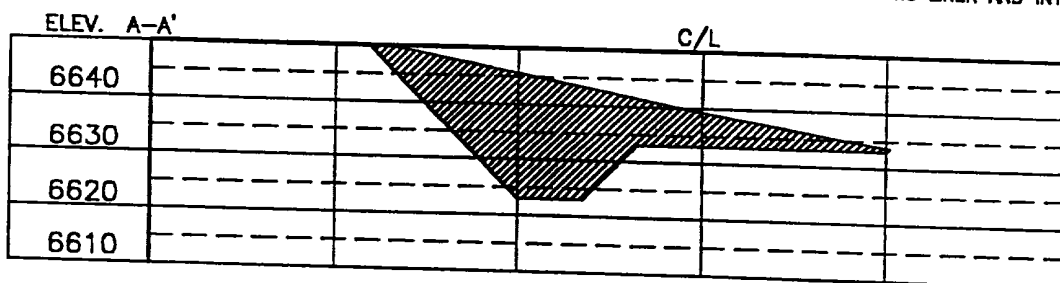
NO ALLOWABLE WILL BE ASSIGNED TO THIS COMPLETION UNTIL ALL INTERESTS HAVE BEEN CONSOLIDATED
OR A NON-STANDARD UNIT HAS BEEN APPROVED BY THE DIVISION

16		17 OPERATOR CERTIFICATION	
SEC. CORNER FD. BRASS CAP BLM 1955		I hereby certify that the information contained herein is true and complete to the best of my knowledge and belief.	
N 89-19-43 E 2632.75'		Signature _____	
2201'		Printed Name _____	
1375'		Title _____	
5252.71'		Date _____	
59'		18 SURVEYOR CERTIFICATION	
S 01-33-27 W		I hereby certify that the well location shown on this plat was plotted from field notes of actual surveys made by me or under my supervision, and that the same is true and correct to the best of my belief.	
LAT. = 36-33-39 N. LONG. = 107-28-38 W.		Date of Survey _____	
21		Signature and Seal of Professional Surveyor: _____	
SEC. CORNER FD. BRASS CAP BLM 1955		12-7-89-1020 PROFESSIONAL LAND SURVEYOR 8894	
		Certificate Number _____	

RINCON UTI 180R, 2201 FNL 13/5 FWL
 SECTION 21, T27N, R6W, N.M.P.M., RIO ARRIBA COUNTY, N. M.
 GROUND ELEVATION: 6633, DATE: DECEMBER 28, 2000



RESERVE PIT DIKE: TO BE 8' ABOVE DEEP SIDE (OVERFLOW - 3' WIDE AND 1' ABOVE SHALLOW SIDE).
 BLOW PIT: OVERFLOW PIPE HALFWAY BETWEEN TOP AND BOTTOM AND TO EXTEND OVER PLASTIC LINER AND INTO BLOW PIT.



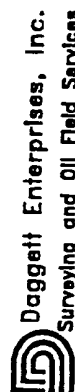
NOTE: CONTRACTOR SHOULD CALL ONE-CALL FOR LOCATION OF ANY MARKED OR UNMARKED BURIED PIPELINES OR CABLES
 ON WELL PAD AND OR ACCESS ROAD AT LEAST TWO (2) WORKING DAYS PRIOR TO CONSTRUCTION.

DRAWN BY: B.S.

ROW#:PR014

CADFILEPR014CFB

DATE:2/18/00



Daggett Enterprises, Inc.
 Surveying and Oil Field Services
 P. O. Box 15088 Farmington, NM 87401
 Phone (505) 328-1772 Fax (505) 328-6019

REVISION: RELOCATION BY: A.G. DATE: 12/29/00

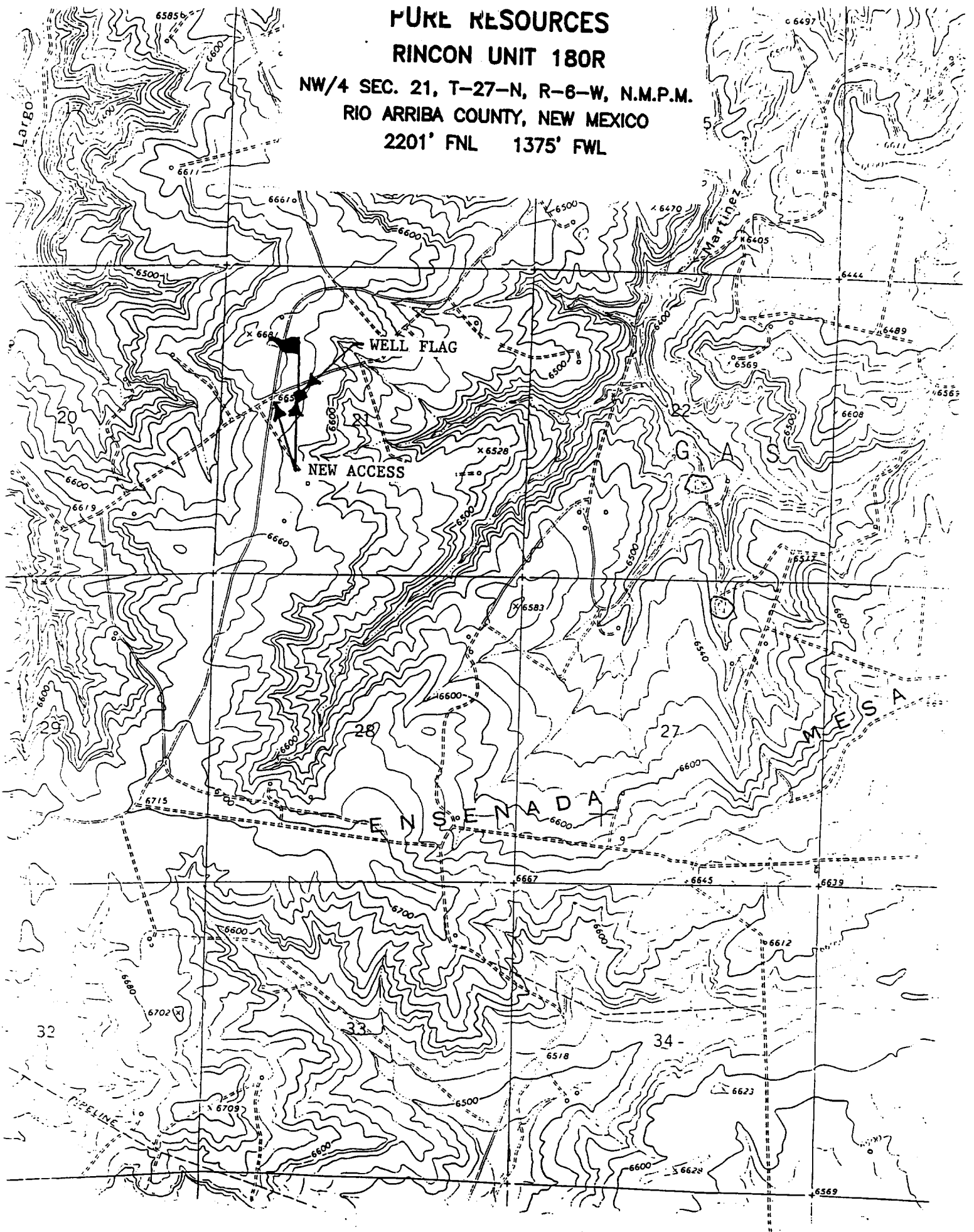
PURE RESOURCES

RINCON UNIT 180R

NW/4 SEC. 21, T-27-N, R-6-W, N.M.P.M.

RIO ARriba COUNTY, NEW MEXICO

2201' FNL 1375' FWL



DISTRICT II
811 South First, Artesia, N.M. 88210

DISTRICT III
1000 Rio Brazos Rd., Artec, N.M. 87410

DISTRICT IV
2040 South Pacheco, Santa Fe, NM 87505

OIL CONSERVATION DIVISION
2040 South Pacheco
Santa Fe, NM 87505

Submit to Appropriate District Office
State Lease - 4 Copies
Fee Lease - 3 Copies

☐ AMENDED REPORT

WELL LOCATION AND ACREAGE DEDICATION PLAT

1 API Number		2 Pool Code	3 Pool Name	
4 Property Code	5 Property Name RINCON UNIT		6 Well Number 180R	
7 OGRD No.	8 Operator Name PURE RESOURCES		9 Elevation 6626'	

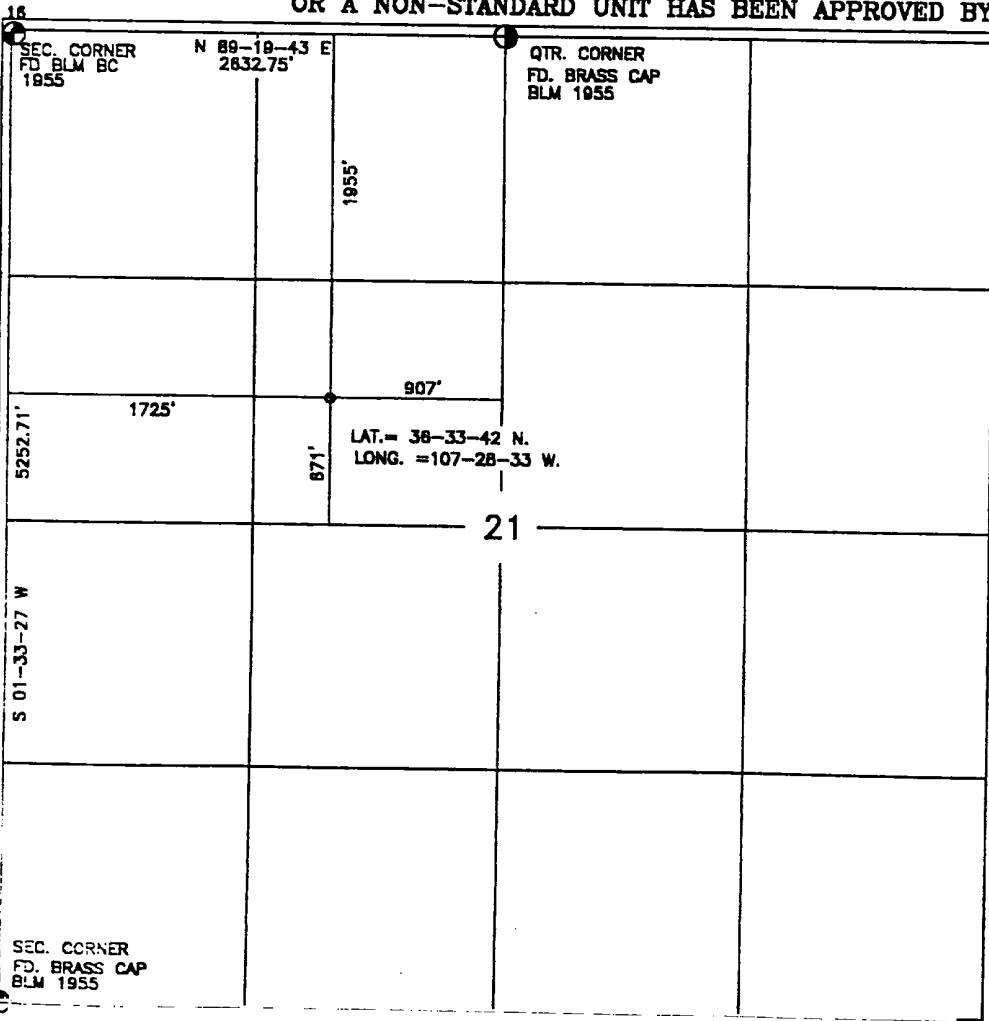
10 Surface Location

UL or lot no. F	Section 21	Township 27-N	Range 6-W	Lot Idn	Feet from the 1955'	North/South line NORTH	Feet from the 1725'	East/West line WEST	County RIO ARriba
--------------------	---------------	------------------	--------------	---------	------------------------	---------------------------	------------------------	------------------------	----------------------

11 Bottom Hole Location If Different From Surface

UL or lot no.	Section	Township	Range	Lot Idn	Feet from the	North/South line	Feet from the	East/West line	County
12 Dedicated Acres			13 Joint or Infill		14 Consolidation Code		15 Order No.		

NO ALLOWABLE WILL BE ASSIGNED TO THIS COMPLETION UNTIL ALL INTERESTS HAVE BEEN CONSOLIDATED
OR A NON-STANDARD UNIT HAS BEEN APPROVED BY THE DIVISION



17 OPERATOR CERTIFICATION

I hereby certify that the information contained herein
is true and complete to the best of my knowledge and
belief.

Signature

Printed Name

Title

Date

18 SURVEYOR CERTIFICATION

I hereby certify that the well location shown on this plat
was plotted from field notes of actual surveys made by
me or under my supervision and that the same is true
and correct to the best of my knowledge and belief.

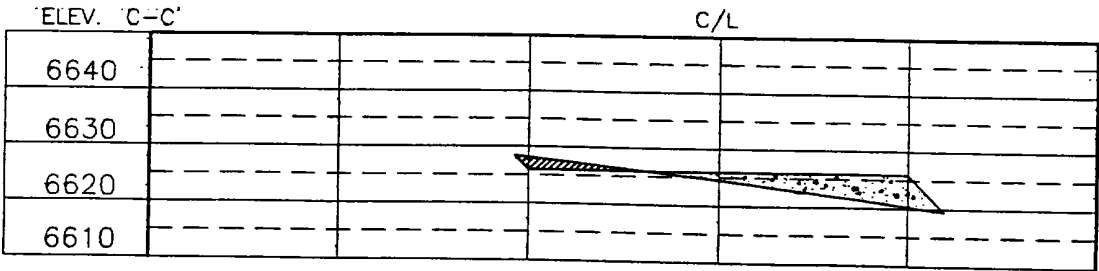
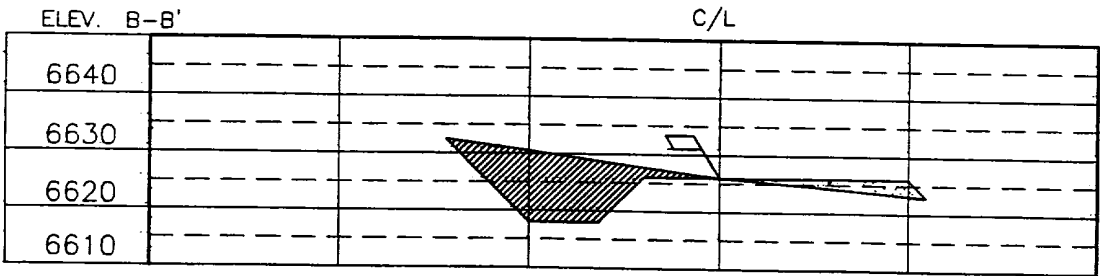
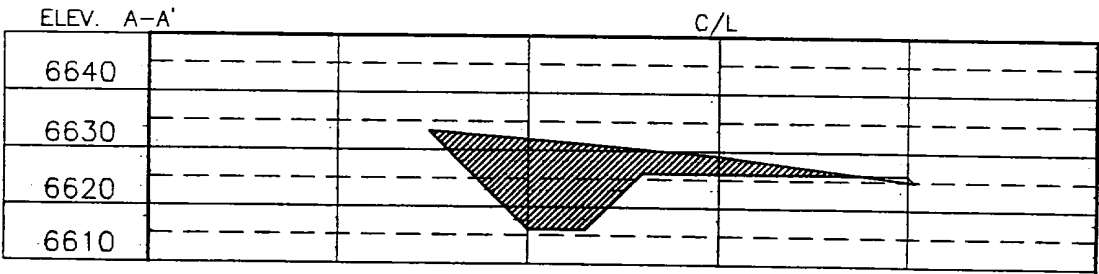
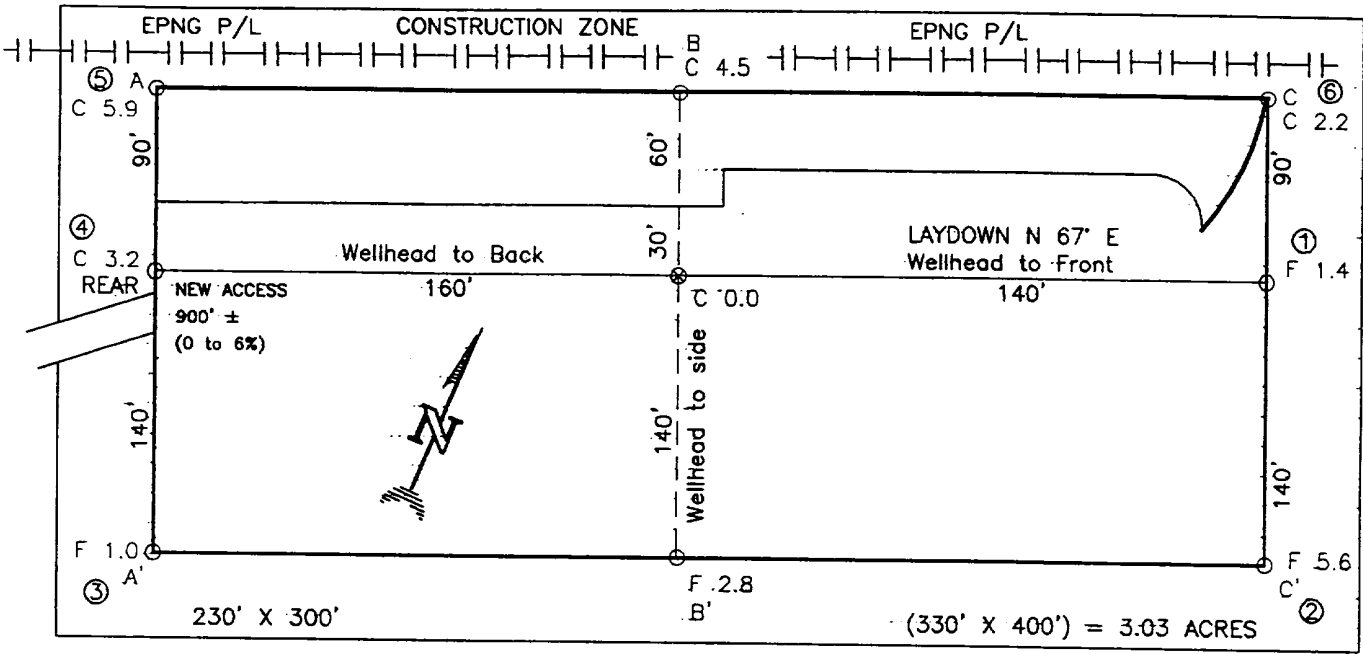
Date of Survey

Signature and Seal of Professional Surveyor

8894

Certificate Number

FUTURE RESOURCES
 RINCON UNIT No. 180R, 1955' FNL 1725' FWL
 SECTION 21, T-27-N, R-6-W, N.M.P.M., RIO ARRIBA COUNTY, N. M.
 GROUND ELEVATION: 6626', DATE: DECEMBER 11, 2000



NOTE: CONTRACTOR SHOULD CALL ONE-CALL FOR LOCATION OF ANY MARKED OR UNMARKED BURIED PIPELINES OR CABLES ON WELL PAD AND OR ACCESS ROAD AT LEAST TWO (2) WORKING DAYS PRIOR TO CONSTRUCTION.

DRAWN BY: B.S. ROW#: PR014 CADFILE: PR014CF8 DATE:12/18/00

Daggett Enterprises, Inc.
 Surveying and Oil Field Services
 P. O. Box 15068 Farmington, NM 87401
 Phone (505) 326-1772 Fax (505) 326-6019

PURE RESOURCES

RINCON UNIT 180R

NW/4 SEC. 21, T-27-N, R-6-W, N.M.P.M.

RIO ARriba COUNTY, NEW MEXICO

1955' FNL 1725' FWL

