

UNITED STATES
DEPARTMENT OF THE INTERIOR

BUREAU OF LAND MANAGEMENT

APPLICATION FOR PERMIT TO DRILL OR DEEPEN

Form approved,
Budget Bureau No. 1004-0136
Expires: December 31, 1991

1a. TYPE OF WORK
b. TYPE OF WELL
OIL WELL ☐ GAS WELL ☐ OTHER ☐
2. NAME OF OPERATOR
Amoco Production Company
3. ADDRESS AND TELEPHONE NO.
P.O. Box 800 Denver Colorado 80201
4. LOCATION OF WELL (Report location clearly and in accordance with any State requirements.)*
At surface 1880FNL & 1780FEL
At proposed prod. zone
14. DISTANCE IN MILES AND DIRECTION FROM NEAREST TOWN OR POST OFFICE*
31 Miles from Aztec, N.M.
15. DISTANCE FROM PROPOSED LOCATION TO NEAREST PROPERTY OR LEASE LINE, FT. (Also to nearest drlg. unit line, if any)
16. NO. OF ACRES IN LEASE
2400.96
17. NO. OF ACRES ASSIGNED TO THIS WELL
N 320 E 1320
18. DISTANCE FROM PROPOSED LOCATION TO NEAREST WELL, DRILLING, COMPLETED, OR APPLIED FOR, ON THIS LEASE, FT.
19. PROPOSED DEPTH
7461' TD
20. ROTARY OR CABLE TOOLS
Rotary
21. ELEVATIONS (Show whether DF, RT, GR., etc.)
6745' GL 6732
22. APPROX. DATE WORK WILL START*
06-01-95

PROPOSED CASING AND CEMENTING PROGRAM				
SIZE OF HOLE	GRADE, SIZE OF CASING	WEIGHT PER FOOT	SETTING DEPTH	QUANTITY OF CEMENT
17.5"	J-58 13.375"	54.5#	50'	61cu.ft. CI B Cement to Surface
12.25"	J-58 9.625"	36#	3090'	1548cu.ft. CI B Cement to Surface
8.75"	N-80 2.875"	6.5#	7461'	1194cu.ft. CI B

Notice of Staking was submitted on 3/9/95 as the Florance #68E.

Lease Discription: T27N-R8W:

Sec. 17: ALL

Sec. 18: E/2, Lots 1,2, E/2NW/4

Sec. 19: E/2

Sec. 20: ALL

Sec. 21: S/2

DRILLING OPERATIONS AUTHORIZED ARE
SUBJECT TO COMPLIANCE WITH ATTACHED
"GENERAL REQUIREMENTS"

IN ABOVE SPACE DESCRIBE PROPOSED PROGRAM: If proposal is to deepen, give data on present productive zone and proposed new productive zone. If proposal is to drill or deepen directionally, give pertinent data on subsurface locations and measured and true vertical depths. Give blowout preventer program, if any.

SIGNED Julio L. Acavado TITLE Sr. Staff Assistant DATE 04-28-1995
(This space for Federal or State office use)

PERMIT NO.

APPROVAL DATE

Application approval does not warrant or certify that the applicant holds legal or equitable title to those rights in the subject lease which would entitle the applicant to conduct operations thereon.

CONDITIONS OF APPROVAL, IF ANY:

APPROVED BY

Hold C-104 For DX+MV NSL

TITLE

*See Instructions On Reverse Side

Title 18 U.S.C. Section 1001, makes it a crime for any person knowingly and willfully to make to any department or agency of the United States any false, fictitious or fraudulent statements or representations.

RECEIVED
JUN 12 1995
OIL CON. DIV.
DIST. 3

RECEIVED
AUG 16 1995
OIL CON. DIV.
DIST. 3

APPROVED
AS AMENDED

JUN 08 1995

DISTRICT MANAGER

District I
PO Box 1988, Hobbs, NM 88241-1988
District II
PO Drawer DD, Artesia, NM 88211-0719
District III
1000 Rio Brazos Rd., Aztec, NM 87410
District IV
PO Box 2088, Santa Fe, NM 87504-2088

State of New Mexico
Energy, Minerals & Natural Resources Department

OIL CONSERVATION DIVISION
PO Box 2088
Santa Fe, NM 87504-2088

Form C-102
Revised February 21, 1994
Instructions on back
Submit to Appropriate District Office
State Lease - 4 Copies
Fee Lease - 3 Copies

☒ AMENDED REPORT

WELL LOCATION AND ACREAGE DEDICATION PLAT

Revise Elev. 3-23-95

1 API Number <u>30-045-29223</u>		2 Pool Code 71599		3 Pool Name Basin Dakota		
4 Property Code <u>518</u>		5 Property Name FLORANCE			6 Well Number # 62E	
7 OGRID No. 00778		8 Operator Name AMOCO PRODUCTION COMPANY			9 Elevation 6732	

10 Surface Location

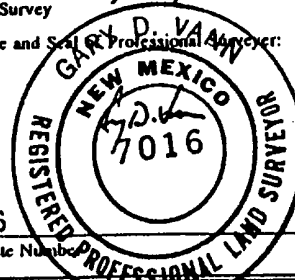
UL or lot no. G	Section 20	Township 27 N	Range 8 W	Lot Idn	Feet from the 1880	North/South line NORTH	Feet from the 1780	East/West line EAST	County SAN JUAN
--------------------	---------------	------------------	--------------	---------	-----------------------	---------------------------	-----------------------	------------------------	--------------------

11 Bottom Hole Location If Different From Surface

UL or lot no.	Section	Township	Range	Lot Idn	Feet from the	North/South line	Feet from the	East/West line	County
---------------	---------	----------	-------	---------	---------------	------------------	---------------	----------------	--------

12 Dedicated Acres <u>720</u> 320	13 Joint or Infill	14 Consolidation Code	15 Order No.
---	--------------------	-----------------------	--------------

NO ALLOWABLE WILL BE ASSIGNED TO THIS COMPLETION UNTIL ALL INTERESTS HAVE BEEN CONSOLIDATED
OR A NON-STANDARD UNIT HAS BEEN APPROVED BY THE DIVISION

16 Diagram showing well location and acreage dedication plat. The diagram includes a grid with dimensions: 1288.65', 1288.65', 1780', 1246.24', 1246.25'. A well location is marked with a circle and crosshair, labeled (763'±) and (784'±). The diagram is labeled 20.	17 OPERATOR CERTIFICATION I hereby certify that the information contained herein is true and complete to the best of my knowledge and belief. Signature <u>Patty Haefele</u> Printed Name Patty Haefele Title Staff Assistant Date August 15, 1995
	18 SURVEYOR CERTIFICATION I hereby certify that the well location shown on this plat was plotted from field notes of actual surveys made by me or under my supervision, and that the same is true and correct to the best of my belief. Date of Survey February 24, 1995 Signature and Seal of Professional Surveyor: <u>GARY D. VAUGHAN</u> 7016 Certificate Number 7016 

BLM RECORD

District I
PO Box 1980, Hobbs, NM 88241-1980
District II
PO Drawer DD, Artesia, NM 88211-0719
District III
1000 Rio Brazos Rd., Aztec, NM 87410
District IV
PO Box 2088, Santa Fe, NM 87504-2088

State of New Mexico
Energy, Minerals & Natural Resources Department

OIL CONSERVATION DIVISION
PO Box 2088
Santa Fe, NM 87504-2088

Form C-102
Revised February 21, 1994
Instructions on back
Submit to Appropriate District Office
State Lease - 4 Copies
Fee Lease - 3 Copies

☒ AMENDED REPORT

WELL LOCATION AND ACREAGE DEDICATION PLAT

Revise Elev. 3-23-95

¹ API Number 30-045-29273	² Pool Code 72319	³ Pool Name Blanco Mesaverde
⁴ Property Code 529	⁵ Property Name FLORANCE D LS	⁶ Well Number # 4R
⁷ OGRID No. 000778	⁸ Operator Name AMOCO PRODUCTION COMPANY	⁹ Elevation 6732

¹⁰ Surface Location

UL or lot no. G	Section 20	Township 27 N	Range 8 W	Lot Idn	Feet from the 1880	North/South line NORTH	Feet from the 1780	East/West line EAST	County SAN JUAN
--------------------	---------------	------------------	--------------	---------	-----------------------	---------------------------	-----------------------	------------------------	--------------------

¹¹ Bottom Hole Location If Different From Surface

UL or lot no.	Section	Township	Range	Lot Idn	Feet from the	North/South line	Feet from the	East/West line	County
---------------	---------	----------	-------	---------	---------------	------------------	---------------	----------------	--------

¹² Dedicated Acres 320	¹³ Joint or Infill	¹⁴ Consolidation Code	¹⁵ Order No.
--------------------------------------	-------------------------------	----------------------------------	-------------------------

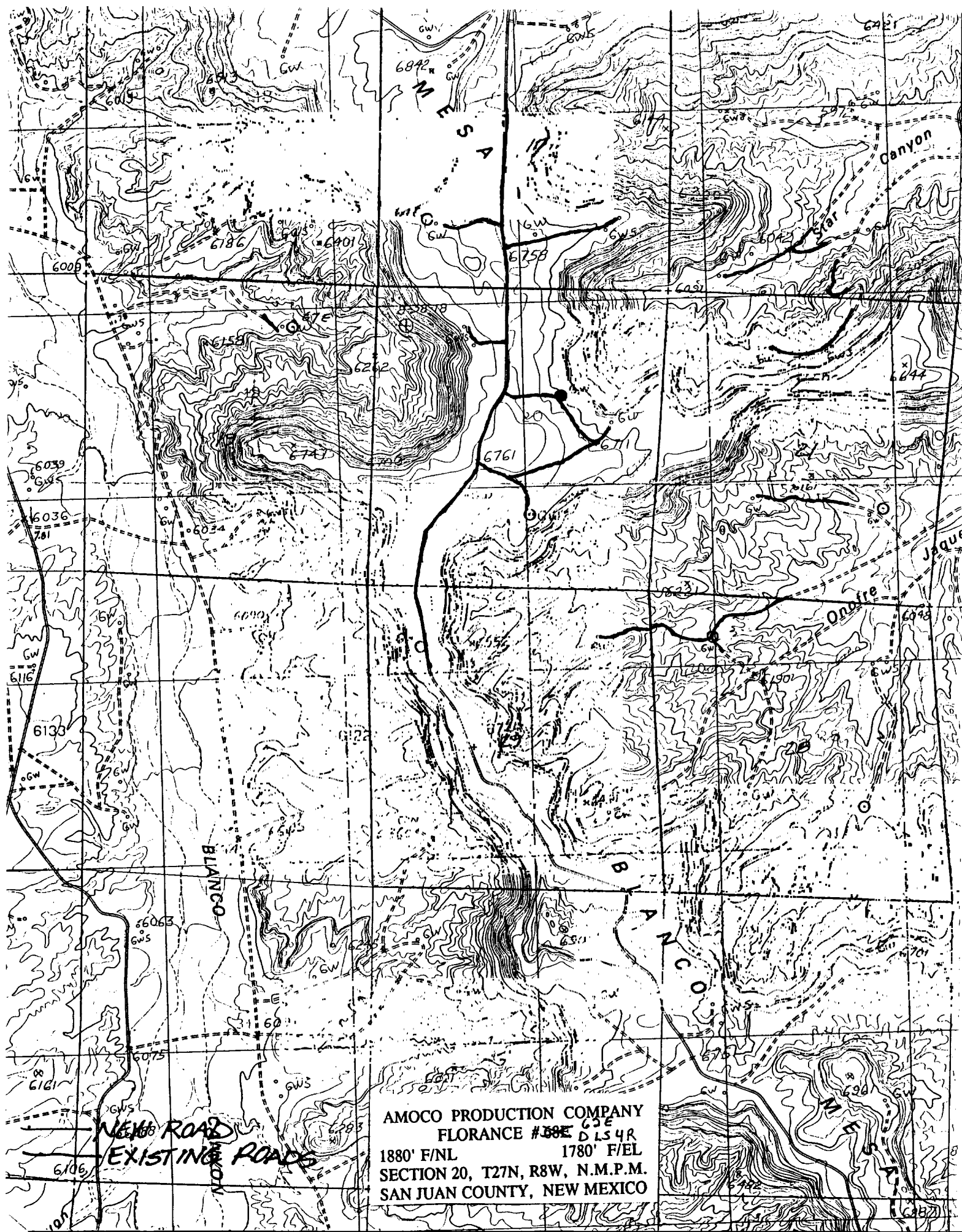
NO ALLOWABLE WILL BE ASSIGNED TO THIS COMPLETION UNTIL ALL INTERESTS HAVE BEEN CONSOLIDATED
OR A NON-STANDARD UNIT HAS BEEN APPROVED BY THE DIVISION

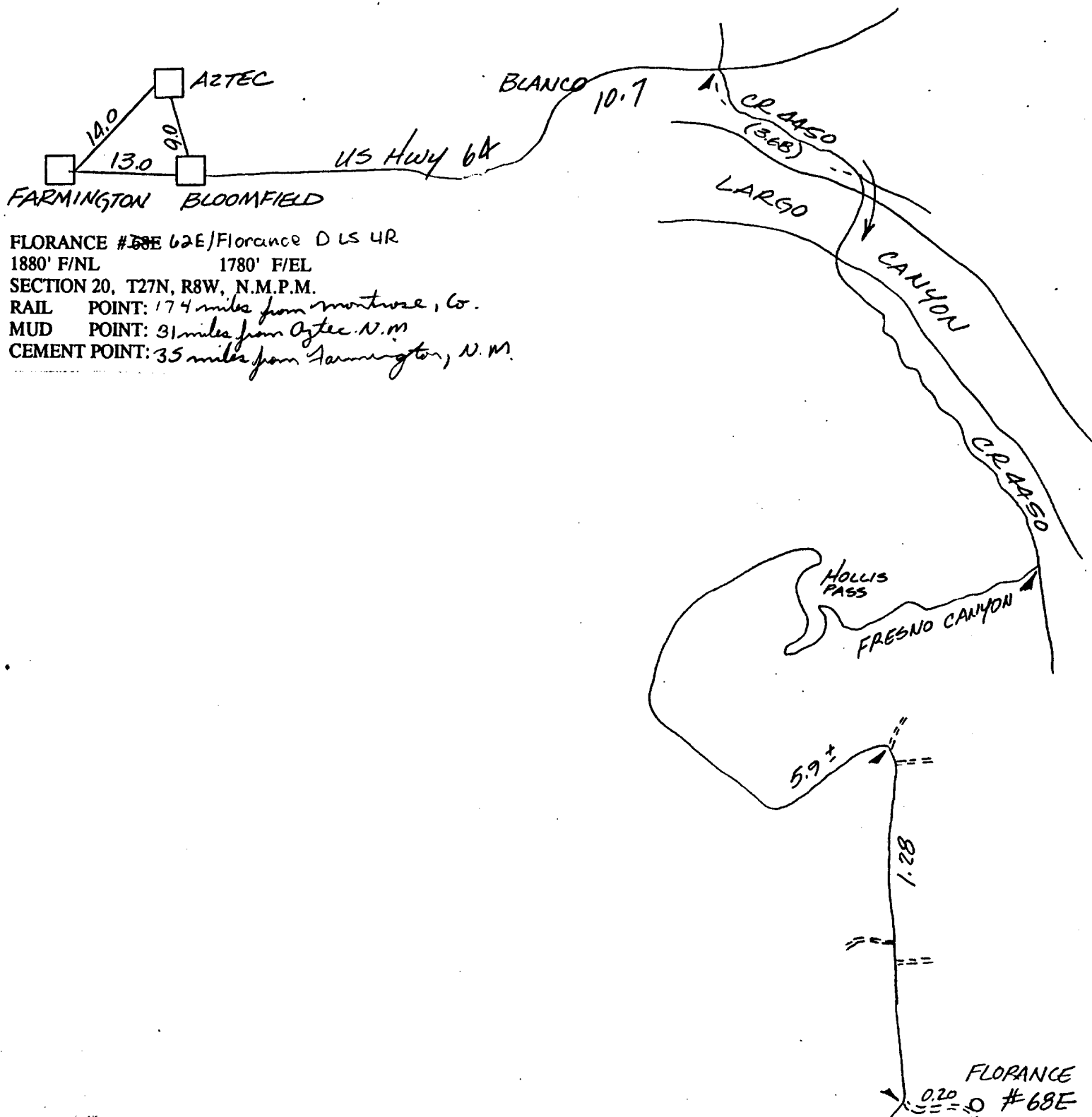
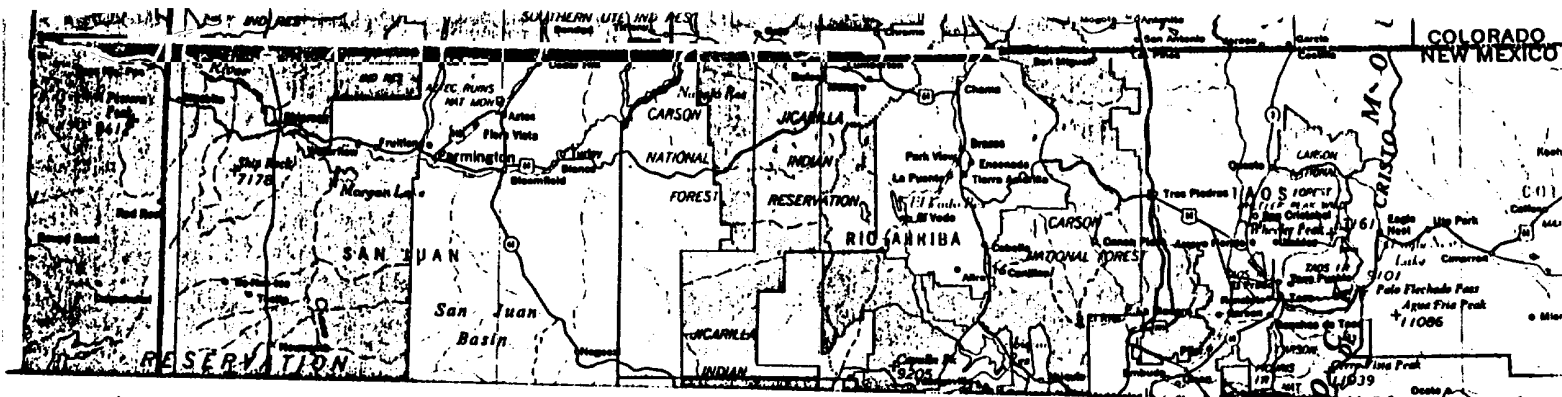
16		¹⁷ OPERATOR CERTIFICATION I hereby certify that the information contained herein is true and complete to the best of my knowledge and belief Signature <u>Patty Haefele</u> Printed Name <u>Patty Haefele</u> Title <u>Staff Assistant</u> Date <u>August 15, 1995</u>

RECEIVED
AUG 16 1995

OIL CON. DIV.
DIST. 3

BLM RECORD





FLORANCE #68E 62E/Florance DLS 4R
 1880' F/NL 1780' F/EL
 SECTION 20, T27N, R8W, N.M.P.M.
 RAIL POINT: 17.4 miles from Montrose, Co.
 MUD POINT: 31 miles from Aztec, N.M.
 CEMENT POINT: 35 miles from Farmington, N.M.