

NEW MEXICO OIL CONSERVATION COMMISSION  
MISCELLANEOUS REPORTS ON WELLS

(Submit to appropriate District Office as per Commission Rule 1106)

COMPANY PHILLIPS PETROLEUM COMPANY, 1200 Denver Club Building, Denver 2, Colorado  
(Address)

LEASE Hempah "C" WELL NO. 1 UNIT P S 36 T 26N R 13W

DATE WORK PERFORMED 3-14-57 POOL Bisti

This is a Report of: (Check appropriate block) ☒ Results of Test of Casing Shut-off

☐ Beginning Drilling Operations

☐ Remedial Work

☐ Plugging

☐ Other \_\_\_\_\_

Detailed account of work done, nature and quantity of materials used and results obtained.

Spudded well 8:45 p.m. March 13, 1957. Drilled 13-3/4" hole to 265'. Ran 199.75' of 10-3/4" Armo S&J Casing set 218' RKB. Cemented with 175 sacks regular Portland cement, circulated approximately 15 sacks. Pumped plug to 175' at 7:30 a.m. March 14, 1957. WOC until 8:00 a.m. March 16. Tested casing with 500# for 30 minutes, held OK. Drilled plug, tested again with 500# for 30 minutes, held OK.

FILL IN BELOW FOR REMEDIAL WORK REPORTS ONLY

Original Well Data:

DF Elev. \_\_\_\_\_ TD \_\_\_\_\_ PBD \_\_\_\_\_ Prod. Int. \_\_\_\_\_ Compl Date \_\_\_\_\_

Tbng. Dia \_\_\_\_\_ Tbng Depth \_\_\_\_\_ Oil String Dia \_\_\_\_\_ Oil String Depth \_\_\_\_\_

Perf Interval (s) \_\_\_\_\_

Open Hole Interval \_\_\_\_\_ Producing Formation (s) \_\_\_\_\_

RESULTS OF WORKOVER:

	BEFORE	AFTER
Date of Test	_____	_____
Oil Production, bbls. per day	_____	_____
Gas Production, Mcf per day	_____	_____
Water Production, bbls. per day	_____	_____
Gas-Oil Ratio, cu. ft. per bbl.	_____	_____
Gas Well Potential, Mcf per day	_____	_____

Witnessed by \_\_\_\_\_

(Company)

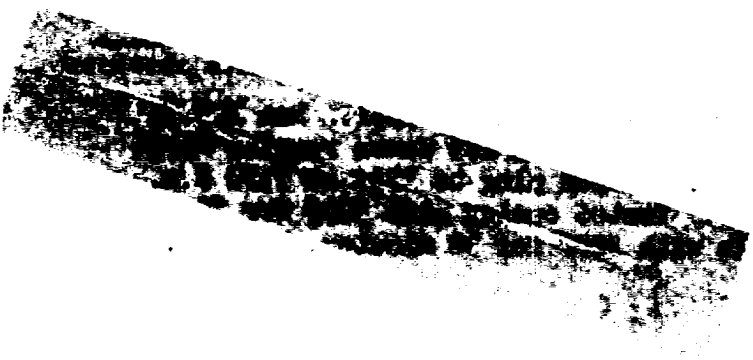
OIL CONSERVATION COMMISSION

Original Signed By  
Name A. R. KENDRICK  
Title PETROLEUM ENGINEER DIST NO. 3  
Date MAR 19 1957

I hereby certify that the information given above is true and complete to the best of my knowledge.

Name W. H. Schul  
Position Division Superintendent  
Company PHILLIPS PETROLEUM COMPANY





OIL CONSERVATION COMMISSION		
AZTEC DISTRICT OFFICE		
No. Copies Received 6		
DISTRIBUTION		
	NO. FURNISHED	
Operator	4	
Santa Fe	1	
Proration Office		
State Land Office		
U. S. G. S.		
Transporter		
File	1	✓