

NEW MEXICO OIL CONSERVATION COMMISSION
Santa Fe, New Mexico

Form C-101
Revised (12/1/55)

NOTICE OF INTENTION TO DRILL

Notice must be given to the District Office of the Oil Conservation Commission and approval obtained before drilling or recompletion begins. If changes in the proposed plan are considered advisable, a copy of this notice showing such changes will be returned to the sender. Submit this notice in QUINTUPLICATE. One copy will be returned following approval. See additional instructions in Rules and Regulations of the Commission. If State Land submit 6 Copies Attach Form C- 128 in triplicate to first 3 copies of form C-101

Farmington, New Mexico

12-21-59

(Place)

(Date)

OIL CONSERVATION COMMISSION
SANTA FE, NEW MEXICO

Elevation - 6175 G.L.

Gentlemen:

You are hereby notified that it is our intention to commence the Drilling of a well to be known as

Delhi-Taylor Oil Corporation

(Company or Operator)

Drolet

(Lease)

Well No. 1, in I The well is

(Unit)

located 2310 feet from the South line and 990 feet from the

East line of Section 28, T. 26N, R. 11W, NMPM.

(GIVE LOCATION FROM SECTION LINE) Wildcat Pool, San Juan County

If State Land the Oil and Gas Lease is No.

If patented land the owner is Sam Drolet

Address Farmington, New Mexico

We propose to drill well with drilling equipment as follows: Rotary - using mud to T.D.

The status of plugging bond is \$10,000.00 Blanket - U. S. F. & G.

Drilling Contractor

We intend to complete this well in the Dakota

formation at an approximate depth of 6200 feet.

CASING PROGRAM

We propose to use the following strings of Casing and to cement them as indicated:

Size of Hole	Size of Casing	Weight per Foot	New or Second Hand	Depth	Sacks Cement
12-1/4	8-5/8	24#	New	250	150
7-7/8	5-1/2	17#	New	6200	250
	2" Tubing	4.70#	New	5900	

If changes in the above plans become advisable we will notify you immediately.

ADDITIONAL INFORMATION (If recompletion give full details of proposed plan of work.)

Approved
Except as follows:

12-22, 1959

Sincerely yours,

Delhi-Taylor Oil Corporation

(Company or Operator)

By

Dist. Supt.

Position

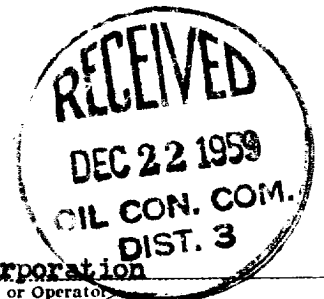
Send Communications regarding well to
Delhi-Taylor Oil Corporation

Name

Address Box 1175, Farmington, New Mexico

OIL CONSERVATION COMMISSION

By



NEW MEXICO OIL CONSERVATION COMMISSION
WELL LOCATION AND ACREAGE DEDICATION PLAT

FORM C-128
Revised 5/1/57

SEE INSTRUCTIONS FOR COMPLETING THIS FORM ON THE REVERSE SIDE

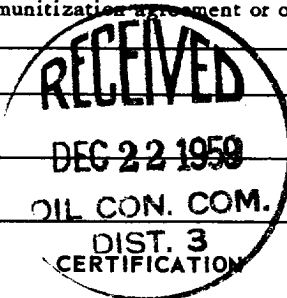
SECTION A

Operator DELHI TAYLOR OIL CORPORATION		Lease DROLET		Well No. 1
Unit Letter I	Section 28	Township 26 NORTH	Range 11 WEST	County SAN JUAN
Actual Footage Location of Well: 2310 feet from the SOUTH line and 990 feet from the EAST line				
Ground Level Elev. 6175.0	Producing Formation DAKOTA	Pool WILDCAT		Dedicated Acreage: E/2 Sec.28 320 Acres

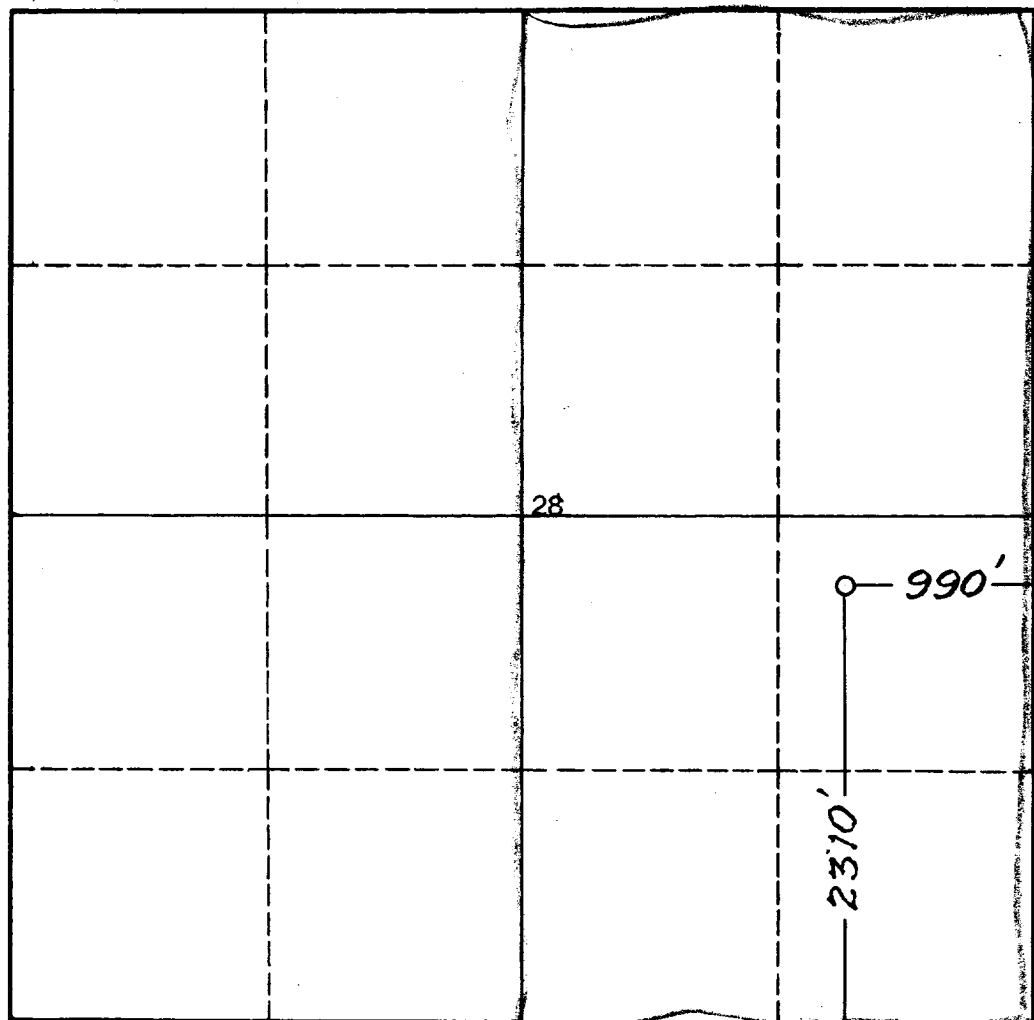
Ref: GLO plat dated 5 August 1932

1. Is the Operator the only owner in the dedicated acreage outlined on the plat below? YES ☒ NO ____ . ("Owner" means the person who has the right to drill into and to produce from any pool and to appropriate the production either for himself or for himself and another. (65-3-29 (e) NMSA 1935 Comp.)
2. If the answer to question one is "no," have the interests of all the owners been consolidated by communization agreement or otherwise? YES ____ NO ____ . If answer is "yes," Type of Consolidation ____
3. If the answer to question two is "no," list all the owners and their respective interests below:

Owner	Land Description



SECTION B

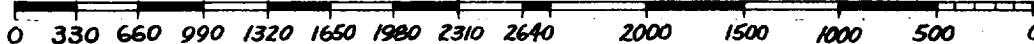


I hereby certify that the information in SECTION A above is true and complete to the best of my knowledge and belief.

Name <i>J. B. Howell</i>
Dist. Supt.
Position Delhi-Taylor Oil Corp.
Company 12-21-59
Date

I hereby certify that the well location shown on the plat in SECTION B was plotted from field notes of actual surveys made by me or under my supervision, and that the same is true and correct to the best of my knowledge and belief.

Date Surveyed 17 December 1959
Registered Professional Engineer and/or Land Surveyor <i>James P. Leese</i> James P. Leese
Certificate No. 1463



INSTRUCTIONS FOR COMPLETION OF FORM C-128

1. Operator shall furnish and certify to the information called for in Section A.
2. Operator shall outline the dedicated acreage for *both* oil and gas wells on the plat in Section B.
3. A registered professional engineer or land surveyor registered in the State of New Mexico or approved by the Commission shall show on the plat the location of the well and certify this information in the space provided.
4. All distances shown on the plat must be from the outer boundaries of the Section.
5. If additional space is needed for listing owners and their respective interests as required in question 3 of Section A, please use space below.

OIL CONSERVATION COMMISSION		
AZTEC DISTRICT OFFICE		
No. Copies Received	5	
DISTRIBUTION		
Operator	1	
Santa Fe	1	
Proclamation Office		
State Land Office		
U. S. G. S.	2	
Transporter		
File	1	7