

NEW MEXICO
OIL CONSERVATION COMMISSION

Form C-128

Well Location and/or Gas Proration Plat

Date 6-29-56

Operator BENSON-MONTIN-GREER DRIG. CORP. Lease FOSTER-RIDDLE

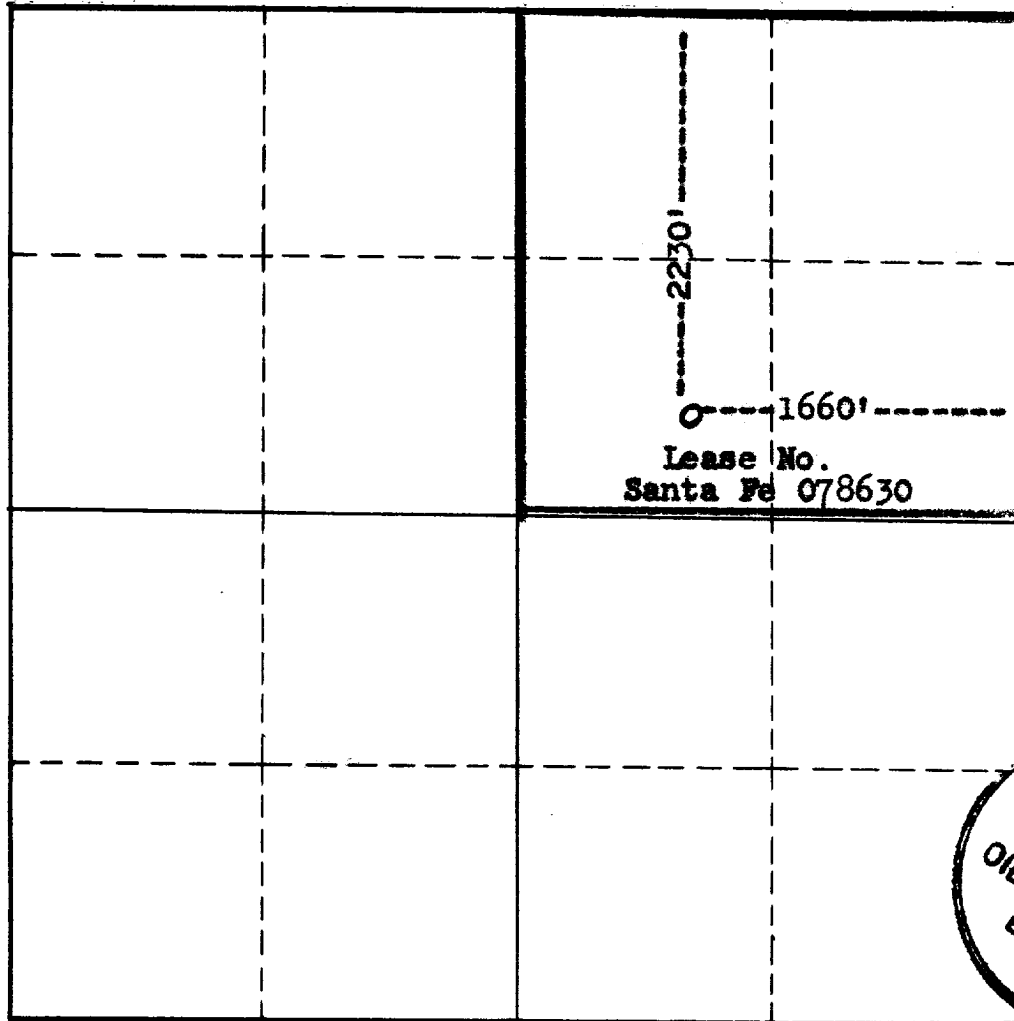
Well No. 2 Section 25 Township 26N Range 8W NMPM

Located 2230 Feet From north Line, 1660 Feet From east Line,

San Juan County, New Mexico. G. L. Elevation 6379

Name of Producing Formation Pictured Cliffs Pool Ballard Dedicated Acreage 160

(Note: All distances must be from outer boundaries of Section)



SCALE: 1"=1000'

1. Is this Well a Dual Comp. ? Yes No X.
2. If the answer to Question 1 is yes, are there any other dually completed wells within the dedicated acreage? Yes No .

This is to certify that the above plat was prepared from field notes of actual surveys made by me or under my supervision and that the same are true and correct to the best of my knowledge and belief.

Name Walter P. Greer
Position Vice-President
Representing Benson-Montin-Greer Drig. Corp.
Address 405 1/2 West Broadway
Farmington, New Mexico

Date Surveyed 12-22-55
S/ James P. Leese
Registered Professional Engineer and/or
Land Surveyor



OIL CONSERVATION COMMISSION		
AZTEC DISTRICT OFFICE		
No. Copies Received <u>3</u>		
DISTRIBUTION		
	FOR	
Director		
Gen'l. Inv.	/	
Executive Office		
State Line Office		
U.S.G.S.	/	
Transporter		
File	/	✓