

New Mexico
OIL CONSERVATION COMMISSION

GOVERNOR EDWIN L. MECHEM
CHAIRMAN
LAND COMMISSIONER GUY SHEPARD
MEMBER
STATE GEOLOGIST R. R. SPURRIER
SECRETARY AND DIRECTOR



Photostat

AZTEC, NEW MEXICO

June 11, 1952

Oil Conservation Commission
Box 371
Santa Fe, New Mexico

Att: Mr. R. R. Spurrier
Director

Dear Mr. Spurrier:

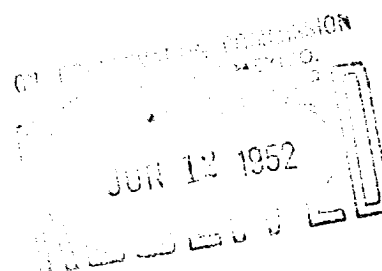
Enclosed herewith is a surveyor's plat showing the location made for J.R. Sharp known as the Luthy No. 2, located 1650 feet from the south line and 1490 feet from the west line of Section 1, Township 26 North, Range 6 West, and owing to the extremely rough terrain it is my recommendation that he be allowed to drill the well as described above and shown on the accompanying plat.

Yours very truly,

Al Greer

Al Greer
Oil & Gas Inspector
District 33

AG:ks
Encl.
cc: Mr. John Wagan
Washington, D.C.

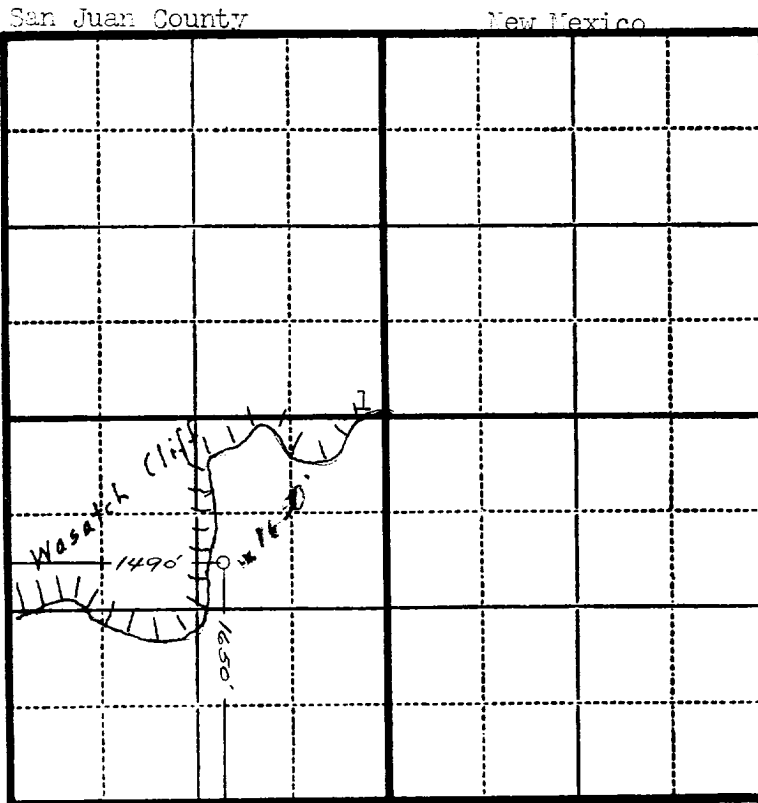


Company J. R. Sharp

Lease Luthy Well No. 2

Sec. 1 T. 26 N., R. 8 W., N.M.P.M.

Location 1650' from the South line and 1490' from the West line.



Scale—4 inches equals 1 mile.

This is to certify that the above plat was prepared from field notes of actual surveys made by me or under my supervision and that the same are true and correct to the best of my knowledge and belief.

Charles J. Finklea

Seal:

Registered Professional
Engineer and Land Surveyor.

Charles J. Finklea
N. Mex. Reg. No. 1302

Surveyed April 22, 19 52

JOHN A. EGAN
GEOLOGIST
820 PALACE BUILDING
TULSA 3, OKLAHOMA

Farminston, N.M.

June 10, 1952

Oil Conservation Commission
Santa Fe, New Mexico

Attention: Mr. R. R. Spurrier

Dear Mr. Spurrier:

I am submitting an application for an unorthodox location for a Pictured Cliffs location as shown on the attached plat.

This location is backed up against the base of a Wasatch cliff as close as I could get it and any direction toward the east encounters some very deep arroyas.

Will you please reply to me at Box 502, Farminston.

Very truly yours,

John A. Egan

RECEIVED
JUN 12 1952
U.S. GEOLOGICAL SURVEY
WASHINGTON, D.C.

New Mexico
Oil Conservation Commission
AZTEC, NEW MEXICO

June 11, 1952

Oil Conservation Commission
Box 871
Santa Fe, New Mexico

Att: Mr. R. R. Spurrier
Director

Dear Mr. Spurrier:

Enclosed herewith is a surveyor's plat showing the location made for J.R. Sharp known as the Luthy No. 2, located 1650 feet from the South line and 1490 feet from the West line of Section 1, Township 26 North, Range 8 West, and owing to the extremely rough terrain it is my recommendation that he be allowed to drill the well as described above and shown on the accompanying plat.

Yours very truly,

Al Greer
Oil & Gas Inspector
District #3

AG:ks
Encl.

cc: Mr. John Eagan
Farmington, N.M.

New Mexico
Oil Conservation Commission
CENTRO NEW MEXICO

1954

Oil Conservation Commission
New Mexico
1954

New Mexico
Oil Conservation Commission

Oil Conservation Commission
New Mexico

Oil Conservation Commission
New Mexico
1954

Oil Conservation Commission
New Mexico

Oil Conservation Commission
New Mexico
1954

Oil Conservation Commission
New Mexico

Oil Conservation Commission
New Mexico

Sec. 1 Township No. 26 N of Range No. 8 W

J.R. Sharp - Luthy No. 2

