

UNITED STATES
DEPARTMENT OF THE INTERIOR
GEOLOGICAL SURVEY

30-045-21809

5. LEASE DESIGNATION AND SERIAL NO.

SF 077935

6. IF INDIAN, ALLOTTEE OR TRIBE NAME

7. UNIT AGREEMENT NAME

Huerfano Unit

8. FARM OR LEASE NAME

Huerfano Unit

9. WELL NO.

265

10. FIELD AND POOL, OR WILDCAT

Undesignated Pennsylvanian

11. SEC., T., R., M., OR BLK.
AND SURVEY OR AREA

Sec. 12, T-26-N, R-10-W

NMPM

12. COUNTY OR PARISH

San Juan

13. STATE

NM

APPLICATION FOR PERMIT TO DRILL, DEEPEN, OR PLUG BACK

1a. TYPE OF WORK

DRILL ☒DEEPEN ☐PLUG BACK ☐

b. TYPE OF WELL

OIL WELL ☐GAS WELL ☐

OTHER

Wildcat

SINGLE ZONE ☒MULTIPLE ZONE ☐

2. NAME OF OPERATOR

El Paso Natural Gas Company

3. ADDRESS OF OPERATOR

PO Box 990, Farmington, NM 87401

4. LOCATION OF WELL (Report location clearly and in accordance with any State requirements.)

At surface

800'N, 1150'W

At proposed prod. zone

14. DISTANCE IN MILES AND DIRECTION FROM NEAREST TOWN OR POST OFFICE

15. DISTANCE FROM PROPOSED*

LOCATION TO NEAREST
PROPERTY OR LEASE LINE, FT.
(Also to nearest drlg. unit line, if any)18. DISTANCE FROM PROPOSED LOCATION*
TO NEAREST WELL, DRILLING, COMPLETED,
OR APPLIED FOR, ON THIS LEASE, FT.

16. NO. OF ACRES IN LEASE

19. PROPOSED DEPTH

13,000'

17. NO. OF ACRES ASSIGNED
TO THIS WELL

320.00

20. ROTARY OR CABLE TOOLS

Rotary

21. ELEVATIONS (Show whether DF, RT, GR, etc.)

6657'GL

22. APPROX. DATE WORK WILL START*

23.

PROPOSED CASING AND CEMENTING PROGRAM

SIZE OF HOLE	SIZE OF CASING	WEIGHT PER FOOT	SETTING DEPTH	QUANTITY OF CEMENT
17 1/2"	13 3/8"	48# H-40	500'	690 cu.ft. to circulate
12 1/4"	9 5/8"	40#&43.5#K&N	7,045'	1940 cu.ft. - 3 stages
7 7/8"	5 1/2"	17#, 20#, 23#N&P	13,000'	1500 cu.ft. to fill to 7045' in 2 stages

9 5/8" intermediate casing to be cemented in three stages:

1st stage - 470 cu.ft. to cover the Gallup formation

2nd stage - 870 cu.ft. to cover the Mesa Verde formation.

3rd stage - 600 cu.ft. to cover the Ojo Alamo.

Evaluate all zones of possible production.

The W/2 of Section 12 is dedicated to this well.

A double gate blow out preventer equipped with blind and pipe rams, an annular preventer, and a choke spool and manifold rated at 5000 psi working pressure and 10,000 psi test will be used while drilling this well below the 9 5/8" intermediate casing. A double gate blow out preventer equipped with blind and pipe rams rated at 3000 psi working pressure and 6000 psi test will be used while drilling this well from surface to 9 5/8" intermediate casing point.

IN ABOVE SPACE DESCRIBE PROPOSED PROGRAM: If proposal is to deepen or plug back, give data on present productive zone and proposed new productive zone. If proposal is to drill or deepen directionally, give pertinent data on subsurface locations and measured and true vertical depths. Give blowout preventer program, if any.

24.

SIGNED

A. G. Davis

TITLE

Drilling Clerk

DATE

May 20, 1975

(This space for Federal or State office use)

PERMIT NO.

APPROVAL DATE

APPROVED BY

MA

TITLE

CONDITIONS OF APPROVAL, IF ANY:

*Hold c-104 for approval of
Non-standard location for o.i.*

*See Instructions On Reverse Side

MAY 20 1975

**NEW MEXICO OIL CONSERVATION COMMISSION
WELL LOCATION AND ACREAGE DEDICATION PLAT**

Form C-102
Supersedes C-128
Effective 1-1-65

All distances must be from the outer boundaries of the Section.

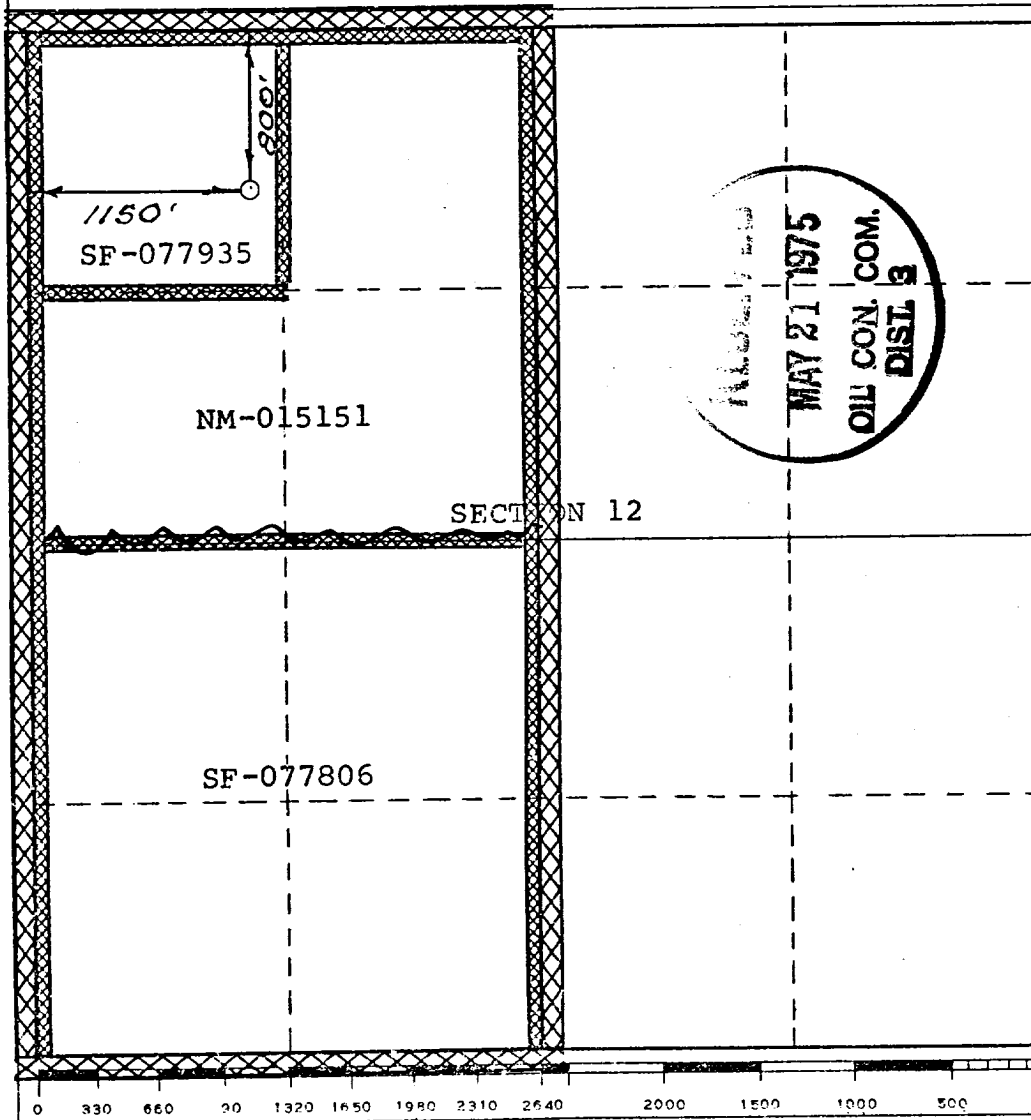
Operator EL PASO NATURAL GAS COMPANY			Lease HUERFANO UNIT (SF-077935)		Well No. 265
Unit Letter D	Section 12	Township 26-N	Range 10-W	County SAN JUAN	
Actual Footage Location of Well: <div style="display: flex; justify-content: space-between;"> 800' feet from the NORTH line and 1150 feet from the WEST line </div>					
Ground Level Elev. 6657	Producing Formation PENNSYLVANIAN	Pool WC UNDESIGNATED PENNSYLVANIAN		Dedicated Acreage: 320.00 160.00 Acres	

1. Outline the acreage dedicated to the subject well by colored pencil or hachure marks on the plat below.
2. If more than one lease is dedicated to the well, outline each and identify the ownership thereof (both as to working interest and royalty).
3. If more than one lease of different ownership is dedicated to the well, have the interests of all owners been consolidated by communitization, unitization, force-pooling, etc?

☒ Yes ☐ No If answer is "yes," type of consolidation Unitization

If answer is "no," list the owners and tract descriptions which have actually been consolidated. (Use reverse side of this form if necessary.) _____

No allowable will be assigned to the well until all interests have been consolidated (by communitization, unitization, forced-pooling, or otherwise) or until a non-standard unit, eliminating such interests, has been approved by the Commission.



CERTIFICATION

I hereby certify that the information contained herein is true and complete to the best of my knowledge and belief.

Original Signed by
D. G. Brisco

Name
William Clark

Position
El Paso Natural Gas Co.

Company
May 20, 1975

Date

I hereby certify that the well location shown on this plat was plotted from field notes of actual surveys made by me or under my supervision, and that the same is true and correct to the best of my knowledge and belief.

Date Surveyed
OCTOBER 2, 1974

Registered Professional Engineer
and/or Land Surveyor

Certificate No. **1760**

El Paso Natural Gas Company

El Paso, Texas 79978

May 20, 1975

ADDRESS REPLY TO
POST OFFICE BOX 990
FARMINGTON NEW MEXICO 87401

Mr. P. T. McGrath
U. S. Geological Survey
Post Office Box 959
Farmington, New Mexico 87401

Re: Application for Permit to Drill
Huerfano Unit #265
NWNW/4 Section 12, T-26-N, R-10-W
Undesignated Pennsylvanian

Dear Mr. McGrath:

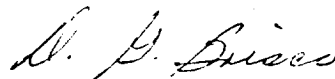
Details regarding existing roads, pipelines, wells, etc. relative to the above well location are included on the previously submitted base maps, "Field Road Map" and "Composite Map No. 1".

The proposed new well location, new roads and new pipeline are shown on the attached plat along with connecting existing roads and pipelines in the vicinity of the proposed new well.

Water for drilling and completion operations will be obtained from the following location: Huerfano Unit Water Well #1, SE/4 13-26-10.

Waste material will be disposed of by burial in the burn pit, latrine, or reserve pit as applicable. There will be no camp nor air strip associated with drilling this well. Upon completion or abandonment of this well, the location will be cleaned and leveled and a dry hole marker placed, if applicable.

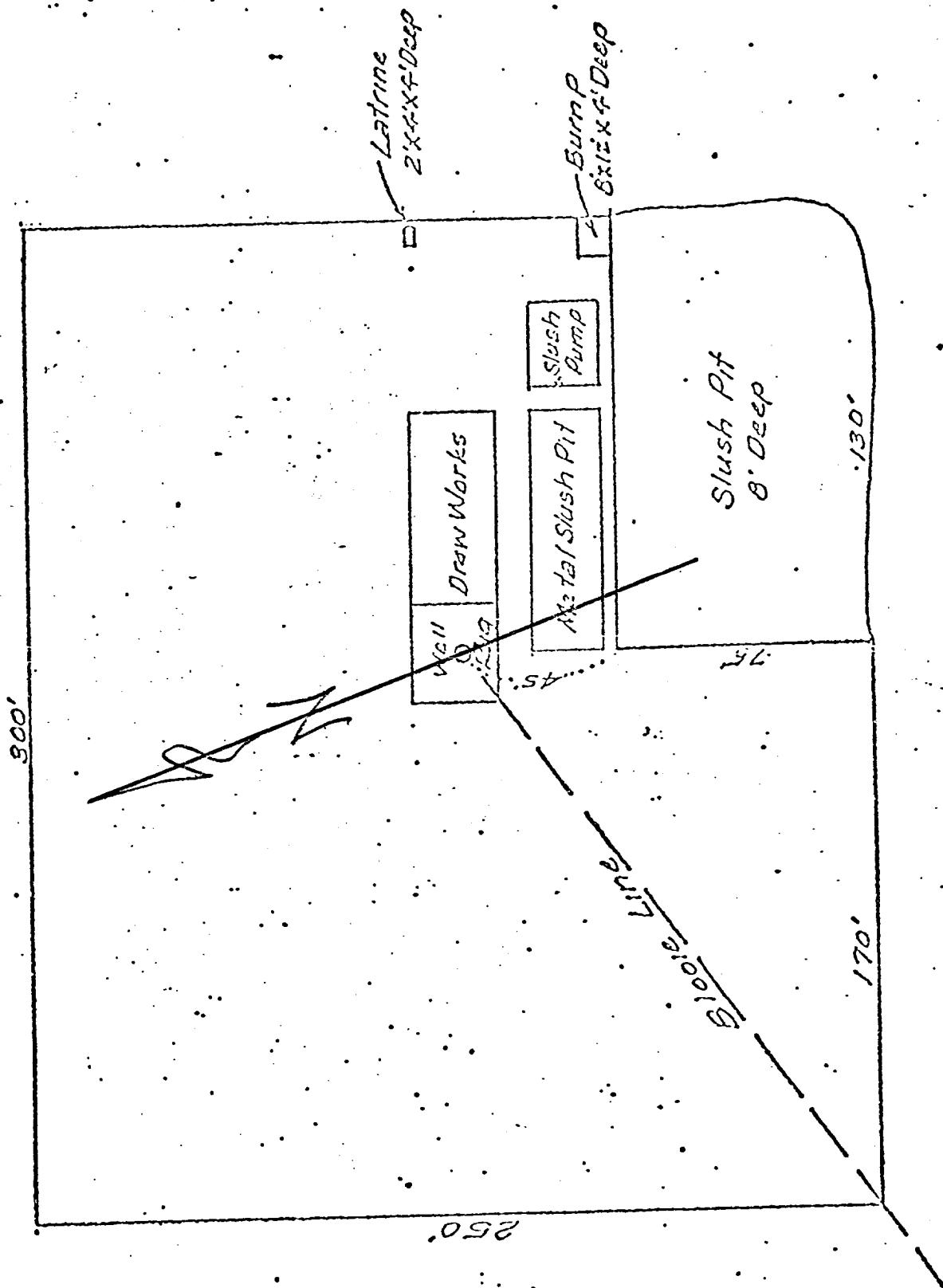
Yours very truly,



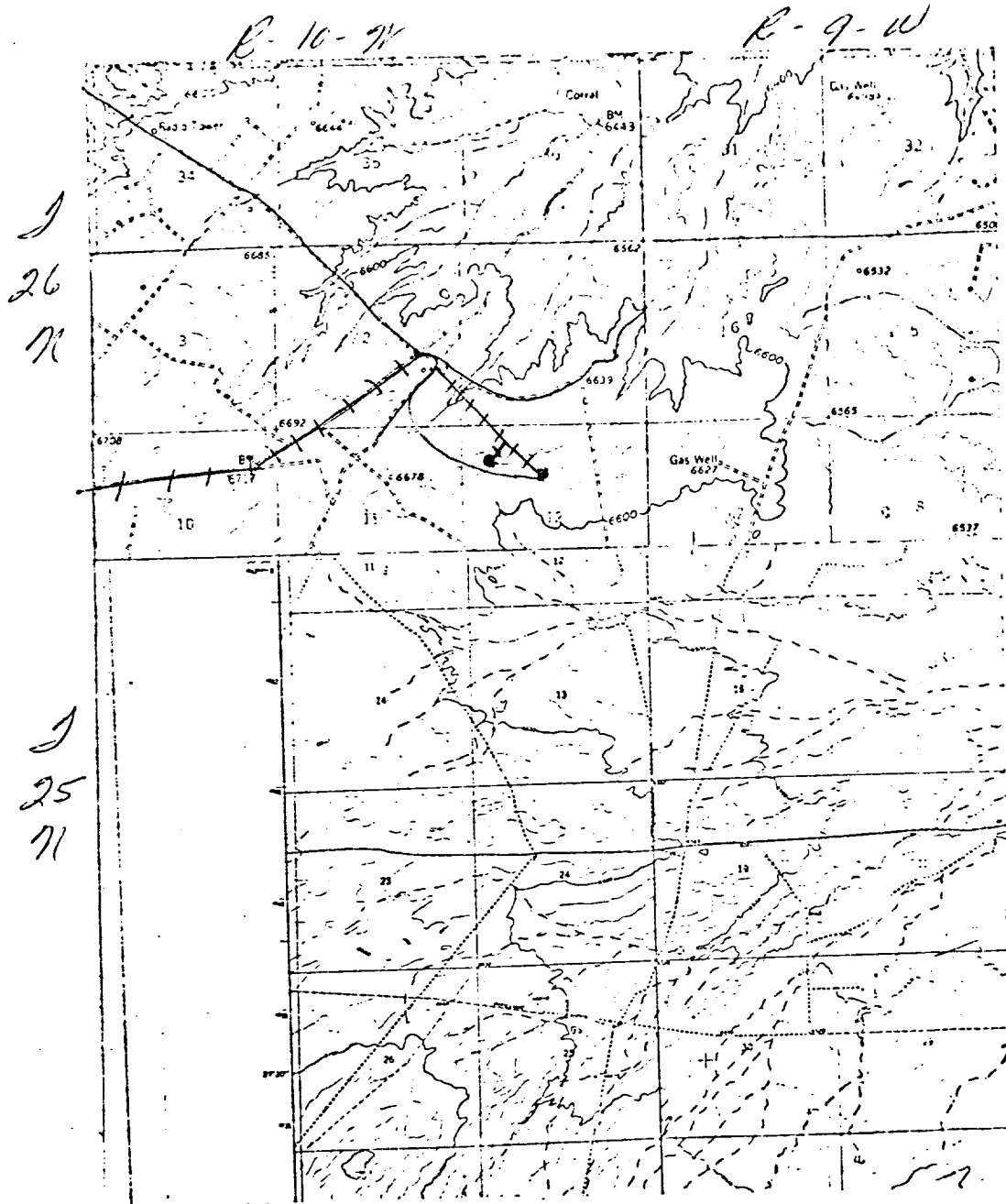
D. G. Brisco
Drilling Clerk

pb

HUERFANO UNIT No. 265



Hayden Unit # 265
 NW 1/4 Sec. 12, T-26-N, R-10-W



LEGEND OF RIGHT-OF-WAYS

EXISTING ROADS	—
EXISTING PIPELINES	— + — + —
EXISTING ROAD & PIPELINE	— + — + —
PROPOSED ROADS	—
PROPOSED PIPELINES	+ + + +
PROPOSED ROAD & PIPELINE	+ + + +