

Form 8-331 C  
(May 1963)

SUBMIT IN TRIPLICATE\*  
(Other instructions on reverse side)

Form approved.  
Budget Bureau No. 42-R1425.

UNITED STATES  
DEPARTMENT OF THE INTERIOR  
GEOLOGICAL SURVEY

30-045-22688

5. LEASE DESIGNATION AND SERIAL NO.

NM 1336

6. IF INDIAN, ALLOTTEE OR TRIBE NAME

7. UNIT AGREEMENT NAME

8. FARM OR LEASE NAME

Monticello

9. WELL NO.

1

10. FIELD AND POOL, OR WILDCAT

WAW - Pictured Cliffs *WAW*

11. SEC., T., R., M., OR BLK. AND SURVEY OR AREA

Sec 3, T26N, R13W

12. COUNTY OR PARISH 13. STATE

San Juan NM

17. NO. OF ACRES ASSIGNED TO THIS WELL

160 15.9.75

20. ROTARY OR CABLE TOOLS

Rotary

22. APPROX. DATE WORK WILL START\*

8-18-77

APPLICATION FOR PERMIT TO DRILL, DEEPEN, OR PLUG BACK

1a. TYPE OF WORK  
DRILL  DEEPEN  PLUG BACK

b. TYPE OF WELL  
OIL WELL  GAS WELL  OTHER   
SINGLE ZONE  MULTIPLE ZONE

2. NAME OF OPERATOR  
Dugan Production Corp.

3. ADDRESS OF OPERATOR  
Box 234, Farmington, NM 87401

4. LOCATION OF WELL (Report location clearly and in accordance with any State requirements.)\*  
At surface  
1190' FNL - 1450' FWL  
At proposed prod. zone

14. DISTANCE IN MILES AND DIRECTION FROM NEAREST TOWN OR POST OFFICE\*  
18 miles south of Farmington, NM

15. DISTANCE FROM PROPOSED\* LOCATION TO NEAREST PROPERTY OR LEASE LINE, FT. (Also to nearest drlg. unit line, if any)  
1190'

16. NO. OF ACRES IN LEASE

17. NO. OF ACRES ASSIGNED TO THIS WELL

18. DISTANCE FROM PROPOSED LOCATION\* TO NEAREST WELL, DRILLING, COMPLETED, OR APPLIED FOR, ON THIS LEASE, FT.  
Approx 1/2 mile

19. PROPOSED DEPTH  
1400'

20. ROTARY OR CABLE TOOLS  
Rotary

21. ELEVATIONS (Show whether DF, RT, GR, etc.)  
6201' GR

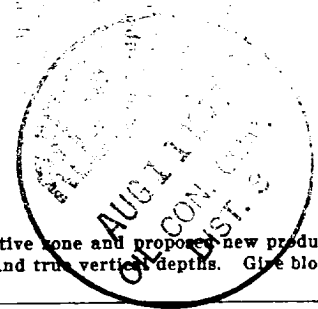
23. PROPOSED CASING AND CEMENTING PROGRAM

SIZE OF HOLE	SIZE OF CASING	WEIGHT PER FOOT	SETTING DEPTH	QUANTITY OF CEMENT
6-1/4"	5-1/2"	14#	30'	5 SX
4-3/4"	2-7/8"	6.4#	1400'	75 SX

Plan to drill 4-3/4" hole with air or minimum mud to 1400' to test Pictured Cliffs formation.

Do not plan to have blowout preventer on well while drilling. Will install master valve and stripper head while completing.

NMERB Requirement: Gas not dedicated at this time.



IN ABOVE SPACE DESCRIBE PROPOSED PROGRAM: If proposal is to deepen or plug back, give data on present productive zone and proposed new productive zone. If proposal is to drill or deepen directionally, give pertinent data on subsurface locations and measured and true vertical depths. Give blowout preventer program, if any.

24. SIGNED Thomas A. Dugan TITLE Petroleum Engineer DATE 8-10-77

(This space for Federal or State office use)

PERMIT NO. \_\_\_\_\_ APPROVAL DATE \_\_\_\_\_

APPROVED BY \_\_\_\_\_ TITLE \_\_\_\_\_ DATE \_\_\_\_\_

CONDITIONS OF APPROVAL, IF ANY:

*Obaq*

NEW MEXICO OIL CONSERVATION COMMISSION  
WELL LOCATION AND ACREAGE DEDICATION PLAT

Form C-102  
Supersedes C-128  
Effective 1-1-65

All distances must be from the outer boundaries of the Section.

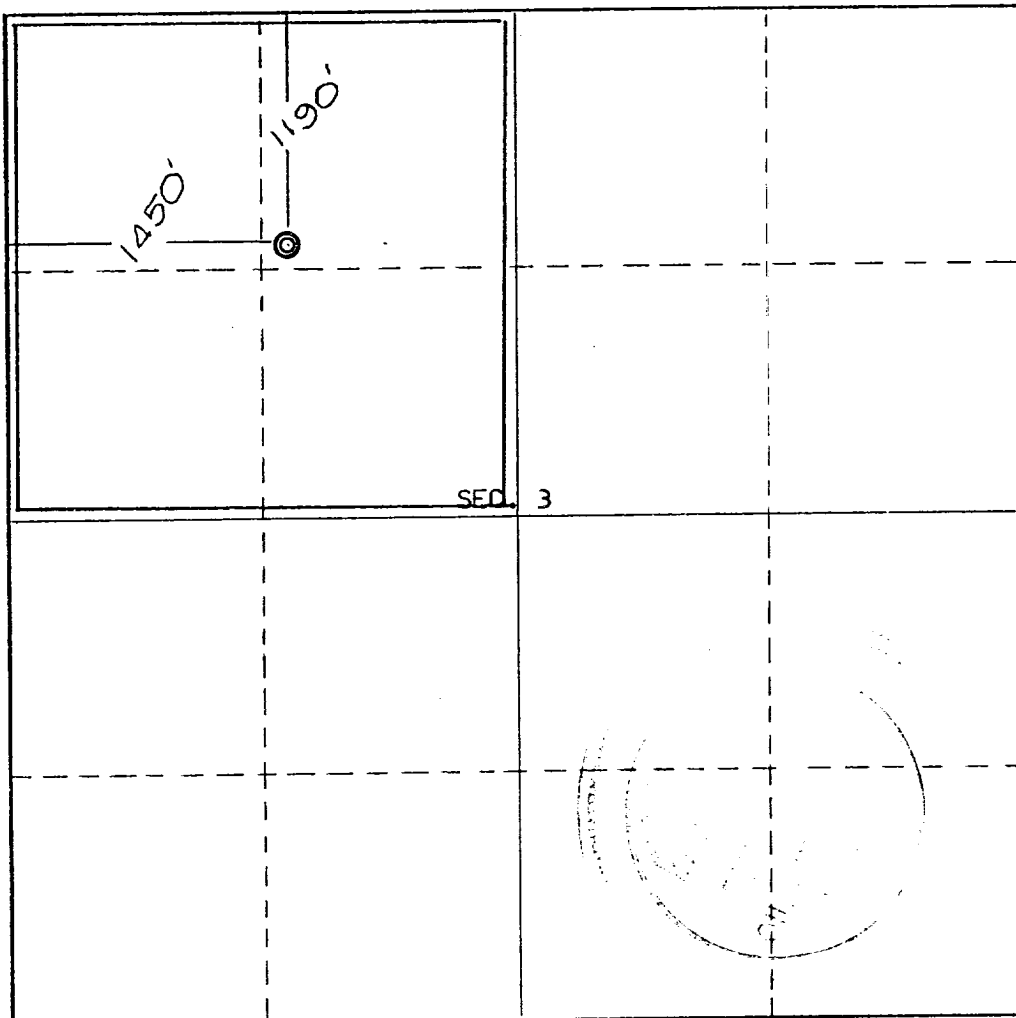
Operator <b>Dugan Production Corporation</b>		Lease <b>Monticello</b>		Well No. <b>1</b>
Unit Letter <b>C</b>	Section <b>3</b>	Township <b>26 North</b>	Range <b>13 West</b>	County <b>San Juan</b>
Actual Footage Location of Well: <b>1190</b> feet from the <b>North</b> line and <b>1450</b> feet from the <b>West</b> line				
Ground Level Elev. <b>6201</b>	Producing Formation <b>Pictured Cliffs</b>	Pool <b>WAW</b>	Dedicated Acreage: <b>159.75</b> <del>160</del> Acres	

- Outline the acreage dedicated to the subject well by colored pencil or hachure marks on the plat below.
- If more than one lease is dedicated to the well, outline each and identify the ownership thereof (both as to working interest and royalty).
- If more than one lease of different ownership is dedicated to the well, have the interests of all owners been consolidated by communitization, unitization, force-pooling, etc?

Yes  No If answer is "yes," type of consolidation \_\_\_\_\_

If answer is "no," list the owners and tract descriptions which have actually been consolidated. (Use reverse side of this form if necessary.) \_\_\_\_\_

No allowable will be assigned to the well until all interests have been consolidated (by communitization, unitization, forced-pooling, or otherwise) or until a non-standard unit, eliminating such interests, has been approved by the Commission.



CERTIFICATION

I hereby certify that the information contained herein is true and complete to the best of my knowledge and belief.

*Thomas A. Dugan*

Name  
**Thomas A. Dugan**

Position  
**Petroleum Engineer**

Company  
**Dugan Production Corp.**

Date  
**8-10-77**

I hereby certify that the well location shown on this plat was plotted from field notes for location surveys made by me or under my supervision, and that the same is true and correct to the best of my knowledge and belief.

**No. 3602**

REGISTERED LAND SURVEYOR

Date Surveyed  
**August 8, 1977**

Registered Professional Engineer and/or Land Surveyor  
*E.V. Echohawk*

Certificate No. **3602**  
**E.V. Echohawk LS**

