



STATE OF NEW MEXICO  
**ENERGY AND MINERALS DEPARTMENT**  
OIL CONSERVATION DIVISION

✓

BRUCE KING  
GOVERNOR

June 10, 1980

LARRY KEHOE  
SECRETARY

POST OFFICE BOX 2088  
STATE LAND OFFICE BUILDING  
SANTA FE, NEW MEXICO 87501  
(505) 827-2434

Powers Elevation  
Cherry Creek Plaza, Suite 1201  
600 South Cherry Street  
Denver, Colorado 80222

Attention: Mr. Darryl Cooper

Administrative Order NSL-1209

Gentlemen:

Reference is made to your application on behalf of Supron Energy Corporation for approval of a non-standard location for their Newsom Well No. 23 to be located 1910 feet from the South line and 1290 feet from the East line of Section 20, Township 26 North, Range 8 West, NMPM, Ballard Pictured Cliffs Pool, San Juan County, New Mexico.

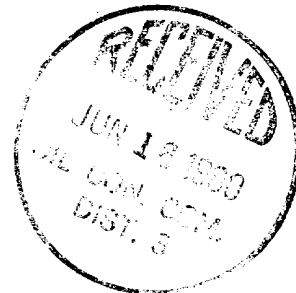
By authority granted me under the provisions of Rule 104 F of the Division Rules and Regulations, the above-described unorthodox location is hereby approved.

Sincerely,

JOE D. RAMEY,  
Director

JDR/RLS/dr

cc: Oil Conservation Division - Aztec  
Oil & Gas Engineering Committee - Hobbs  
U. S. Geological Survey - Farmington



OIL CONSERVATION COMMISSION

Albuquerque DISTRICT

OIL CONSERVATION COMMISSION  
BOX 2088  
SANTA FE, NEW MEXICO

DATE May 29, 1990

RE: Proposed MC \_\_\_\_\_  
Proposed DHC \_\_\_\_\_  
Proposed NSL X \_\_\_\_\_  
Proposed SWD \_\_\_\_\_  
Proposed WFX \_\_\_\_\_  
Proposed PMX \_\_\_\_\_

Gentlemen:

I have examined the application dated May 27, 1990  
for the Supra Energy Corp Newcom #23 I-20-26N-8W  
Operator Lease and Well No. Unit, S-T-R

and my recommendations are as follows:

Approve  
\_\_\_\_\_  
\_\_\_\_\_  
\_\_\_\_\_  
\_\_\_\_\_  
\_\_\_\_\_

Yours very truly,

Frank S. Cherry



**POWERS ELEVATION**

OIL WELL ELEVATIONS AND LOCATIONS  
CHERRY CREEK PLAZA, SUITE 1201  
800 SOUTH CHERRY STREET  
DENVER, COLORADO 80222  
PHONE NO. 303/321-2217

May 21, 1980

New Mexico Oil & Gas Conservation Commission  
Joe D. Ramey, Director  
P. O. Box 2088  
Santa Fe, New Mexico 87501

RE: Filing Exception to Rule 104F  
Supron Energy Corporation  
#23 Newsom  
NE SE Sec. 20 T26N R8W  
1910' FSL & 1290' FEL  
San Juan County, New Mexico

Dear Mr. Ramey:

Supron Energy Corporation requests an exception to Rule 104F for the above-captioned well location. Enclosed is a location and elevation plat and a topographic map.

The location was staked at the above coordinates due to extreme topographic difficulties.

Supron Energy Corporation has the operating rights to the Pictured Cliffs formation on the surrounding acreage, so no other leaseholders are involved.

Should you require any additional information in order to approve this application for exception to Rule 104F, please call.

Thank you.

Sincerely,

POWERS ELEVATION

Darryl Cooper

DC/dc  
Enclosures

cc: (2) Mexico Oil & Gas Conservation Commission, Aztec, New Mexico  
Frances Cooper, Dallas, Texas  
Haskell Fleetwood, Supron Energy Corp., Dallas, TX  
Rudy Motto, Supron Energy Corp., Farmington, New Mexico



NEW MEXICO OIL CONSERVATION COMMISSION  
WELL LOCATION AND ACREAGE DEDICATION PLAT

Form C-102  
Supersedes C-121  
Effective 1-1-65

All distances must be from the outer boundaries of the Section.

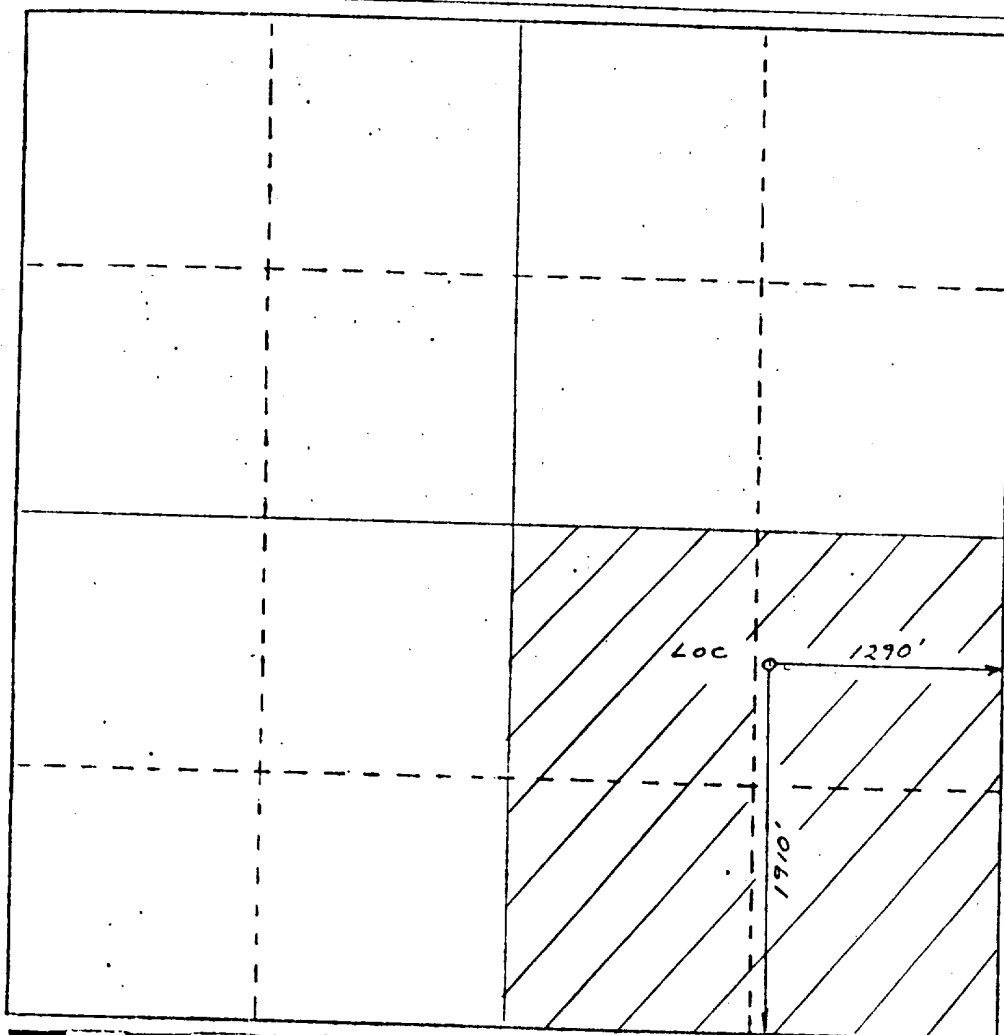
Operator <b>Supron Energy Corporation</b>		Leasing <b>SF-078433</b>		Well No. <b>Newsom #23</b>	
Unit Letter	Section <b>20</b>	Township <b>26 North</b>	Range <b>8 West</b>	County <b>San Juan</b>	
Actual Footage Location of Well: <b>1910</b> feet from the <b>South</b> line and <b>1290</b> feet from the <b>East</b> line.					
Ground Level Elev. <b>6330'</b>	Producing Formation		Pool	Dedicated Acreage	
Action					

1. Outline the acreage dedicated to the subject well by colored pencil or hachure marks on the plat below.
2. If more than one lease is dedicated to the well, outline each and identify the ownership thereof (both as to working interest and royalty).
3. If more than one lease of different ownership is dedicated to the well, have the interests of all owners been consolidated by communitization, unitization, force-pooling, etc?

☐ Yes ☐ No If answer is "yes," type of consolidation \_\_\_\_\_

If answer is "no," list the owners and tract descriptions which have actually been consolidated. (Use reverse side of this form if necessary.) \_\_\_\_\_

No allowable will be assigned to the well until all interests have been consolidated (by communitization, unitization, forced-pooling, or otherwise) or until a non-standard unit, eliminating such interests, has been approved by the Commission.



CERTIFICATION

I hereby certify that the information contained herein is true and complete to the best of my knowledge and belief.

*George Lapaseotes*  
Name **George Lapaseotes**

V. Pres. Powers Elevation

Position

Agent Consultant for

Company

**Supron Energy Corporation**

Date

**5-12-80**

I hereby certify that the well location shown on this plat was plotted from field notes of actual surveys made by me or under my supervision, and that the same is true and correct to the best of my knowledge and belief.

Date Survey

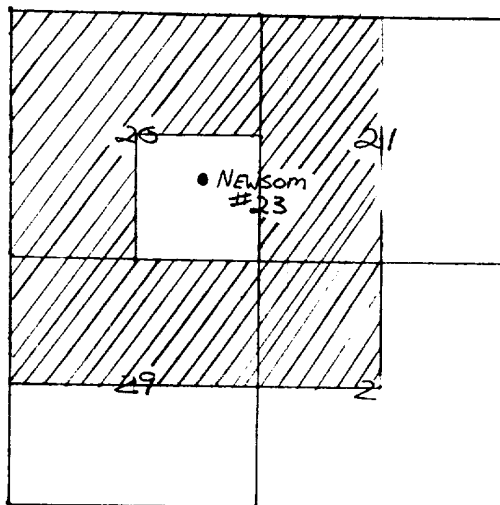
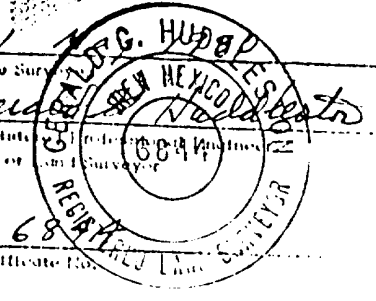
*George Lapaseotes*

Register

and of

Surveyor

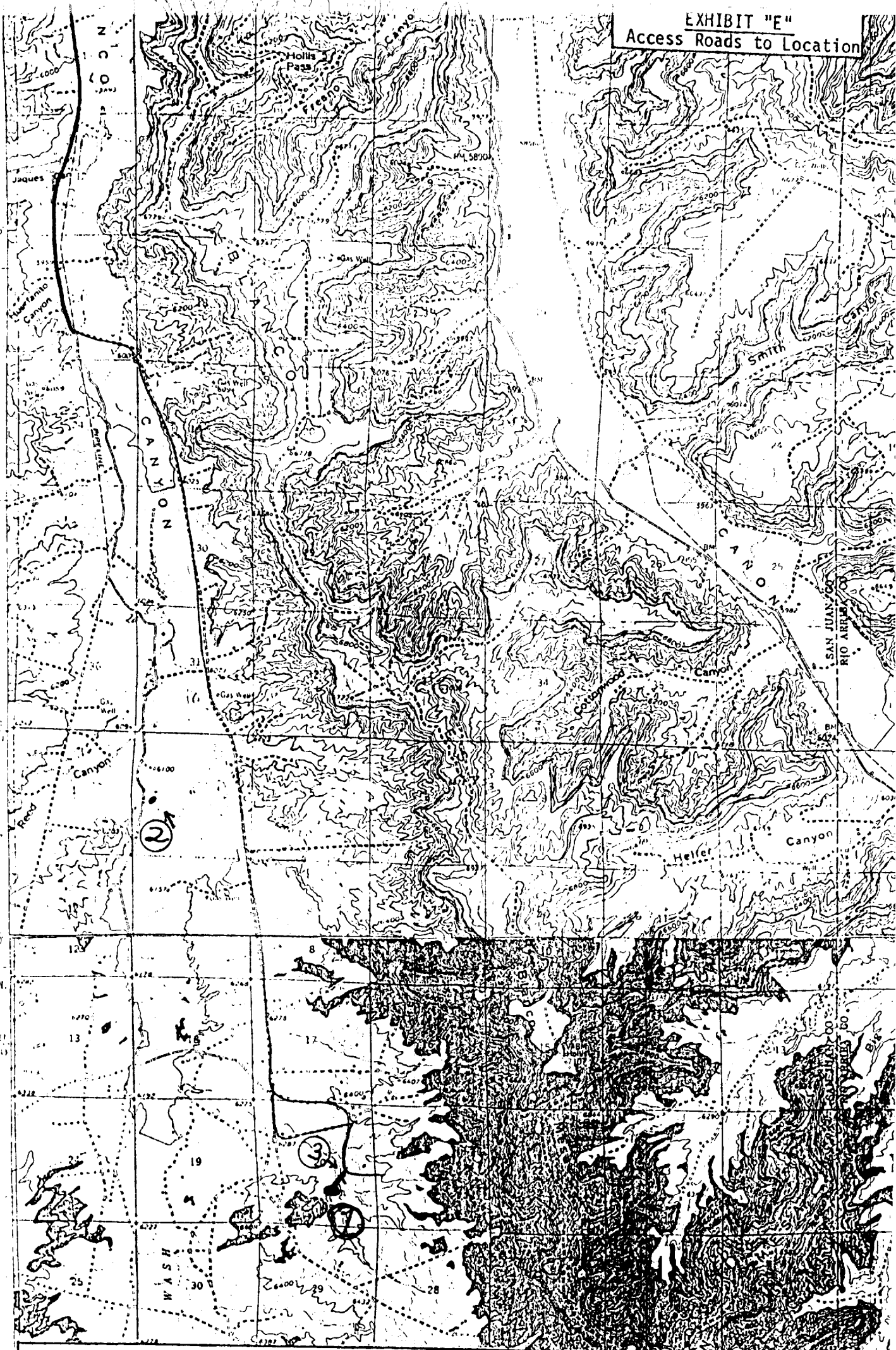
Certificate No.



- Supron Energy Corporation



# EXHIBIT "E" Access Roads to Location



## EXHIBIT "E" - Access Road to Location

### LEGEND

1. Location:  
Supron Energy Corporation  
#23 Newsom  
NW SE Sec. 20 T26N R8W  
1500' FSL & 1780' FEL  
San Juan County, New Mexico

Color Coding  
County Road  
Oil Field Road  
New Access Road

2. Closest Dwelling  
3. Cattle Guard

