

UNITED STATES
DEPARTMENT OF THE INTERIOR
GEOLOGICAL SURVEY

SUBMIT IN TRIPPLICATE*
(Other instructions on re-
verse side)

Form approved.
Budget Bureau No. 42-R1424

5. LEASE DESIGNATION AND SERIAL NO.

SF-078430.

6. UNIT ACQUISITION OR TRIBE NAME

N/A

7. UNIT AGREEMENT NAME

N/A

8. FARM OR LEASE NAME

Nickson

9. WELL NO.

11E

10. FIELD AND POOL, OR WILDCAT

Ballard Pictured Cliffs

11. SEC., T., R., M., OR BLK. AND
SURVEY OR AREA

Sec. 11 T26N R8W

12. COUNTY OR PARISH 13. STATE

San Juan

New Mexico

SUNDRY NOTICES AND REPORTS ON WELLS

(Do not use this form for proposals to drill or to deepen or plug back to a different reservoir.
Use "APPLICATION FOR PERMIT" for such proposals.)

1. OIL WELL GAS WELL OTHER

2. NAME OF OPERATOR
Supron Energy Corporation c/o John H. Hill et al

3. ADDRESS OF OPERATOR ATTN: Lura Wallis
Suite 020 Kyser Bldg. 300 West Arrington Farmington, NM 87401

4. LOCATION OF WELL (Report location clearly and in accordance with any State requirements.*
See also space 17 below.)
At surface
810' FNL & 1770' FWL (NE NW)

14. PERMIT NO. N/A

15. ELEVATIONS (Show whether DP, RT, CR, etc.)
6229' GR

16. Check Appropriate Box To Indicate Nature of Notice, Report, or Other Data

NOTICE OF INTENTION TO:

SUBSEQUENT REPORT OF:

TEST WATER SHUT-OFF

PULL OR ALTER CASING

WATER SHUT-OFF

REPAIRING WELL

FRACTURE TREAT

MULTIPLE COMPLETE

FRACTURE TREATMENT

ALTERING CASING

SHOOT OR ACIDIZE

ABANDON*

SHOOTING OR ACIDIZING

ABANDONMENT*

REPAIR WELL

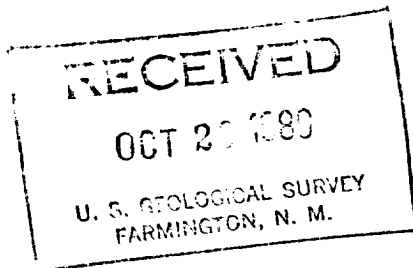
CHANGE PLANS

(Other)

(Note: Report results of multiple completion on Well
Completion or Recompletion Report and Log form.)

17. DESCRIBE PROMISED OR COMPLETED OPERATIONS (Clearly state all pertinent details, and give pertinent dates, including estimated date of starting any proposed work. If well is directionally drilled, give subsurface locations and measured and true vertical depths for all markers and zones pertinent to this work.)*

- 1.) Nickson #22 has been re-named to Nickson #11E.
- 2.) Nickson #11E will be deepened from Pictured Cliffs to Dakota (TD 7000')
- 3.) Cement and casing program discussed in attached EXHIBIT "B".
- 4.) Drill pad is of sufficient size to accomodate drilling to Dakota (TD 7000') without additional surface disturbance.



18. I hereby certify that the foregoing is true and correct

SIGNED

Laura Wallis

TITLE

Agent Consultant for
Supron Energy Corp.

DATE October 22, 1980

(This space for Federal or State office use)

APPROVED BY

CONDITIONS OF APPROVAL, IF ANY:

TITLE

DATE

OCT 31 1980
Bruce W...
DISTRICT ENGINEER

*See Instructions on Reverse Side

NMOCC

EXHIBIT "B"

TEN-POINT COMPLIANCE PROGRAM

OF NTL-6 APPROVAL OF OPERATIONS

Attached to Form 9-331C
Supron Energy Corporation
Nickson #11 E
NE NW Sec. 11 T26N R8W
810' FNL & 1770' FWL
San Juan County, New Mexico

1. The Geologic Surface Formation

The surface formation is the Wasatch.

2. Estimated Topo of Important Geologic Markers

Ojo Alamo	1145'
Kirtland	1355'
Fruitland	1495'
Pictured Cliffs	2185'
Chacra	3115'
Cliffhouse	3780'
Menefee	3910'
Point Lookout	4500'
Gallop	5630'
Greenhorn	6480'
Graneros	6550'
Dakota	6590'
Total depth	7000'

3. Estimated Depths of Anticipated Water, Gas & Minerals

Ojo Alamo	1145'	Water
Kirtland	1355'	Water
Fruitland	1495'	Water
Pictured Cliffs	2185'	Gas
Chacra	3115'	Water
Cliffhouse	3780'	Gas
Menefee	3910'	---
Point Lookout	4500'	Gas
Gallop	5630'	---
Greenhorn	6480'	---
Graneros	6550'	Gas
Dakota	6590'	Gas

4. The Proposed Casing Program

<u>HOLE SIZE</u>	<u>INTERVAL</u>	<u>SECTION LENGTH</u>	<u>SIZE (OD)</u>	<u>WEIGHT, GRADE & JOINT</u>	<u>NEW OR USED</u>
12-1/4"	0-300'	300'	8-5/8"	24# K-55 ST&C	New
6-1/4"	0-2000'	2000'	4-1/2"	10.5# K-55 ST&C	New
	2000'-6000'	4000'		10.5# CW-55 ST&C	
	6000'-7000'	1000'		10.5# K-55 ST&C	

Cement Program - 3 Stage Cementing

- First Stage - Sacks of mix required and additives to fill from 7000' to approximately 5400'. Slurry 50-50 poz cement, 2% gel, 2% Calcium Chloride.
- Second Stage - From 5400' to 3300' with 35% excess on filler cement. Slurry to be 50-50 poz cement, 6% gel, 2% Calcium Chloride followed by 50 sacks neat cement class "B".
- Third Stage - From 3300' to surface with 100% excess. Slurry to be 50-50 poz cement, 2% gel, 2% Calcium Chloride for 500' from 3300' to 2800' then from 2800' to surface 50-50 poz and cement, 2% Calcium Chloride, 6% gel.

5. The Operator's Minimum Specifications for Pressure Control

EXHIBIT "C" is a schematic diagram of the blowout preventer equipment. The BOP's will be hydraulically tested to half of working pressure after nipling up and after any use under pressure. Pipe rams will be operationally checked each 24-hour period, as will blind rams each time pipe is pulled out of the hole. Such checks of BOP will be noted on daily drilling reports.

Accessories to BOP will include a floor safety valve, drill string BOP and choke manifold with pressure rating equivalent to the BOP stack.

6. The Type and Characteristics of the Proposed Circulating Muds

This will be drilled with air and fresh water gel with adequate stocks of sorptive agents on site to handle possible spills of fuel and oil on the surface. Heavier muds will be on location to be added if pressure requires.

<u>DEPTH</u>	<u>TYPE</u>	<u>WEIGHT #/gal.</u>	<u>VISCOSITY-sec./gal.</u>	<u>FLUID LOSS cc</u>
0-300'	fresh Water-Gel	8.4 - 9.5	35 - 45	less than 10
300-6000'	fresh Water-Gel	8.4 - 9.5	35 - 45	less than 10
6000-T.D.	Air	----	----	----

7. The Auxiliary Equipment to be Used

- No kelly cock will be used.
- A float will be used at the bit.

- (c) Neither mud logging unit nor detecting device will be monitoring the system.
- (d) A stabbing valve will be on the floor to be stabbed into the drill pipe when kelly is not in the string.

8. The Testing, Logging and Coring Programs to be Followed

- (a) No DST's are anticipated.
- (b) The logging program will consist on an IES and a GR density over selected intervals. Other logs will be determined at well site to best evaluate any shows.
- (c) No coring is anticipated.
- (d) Stimulation procedures will be determined after evaluation of logs. If treatment is indicated, appropriate Sundry Notice will be submitted.

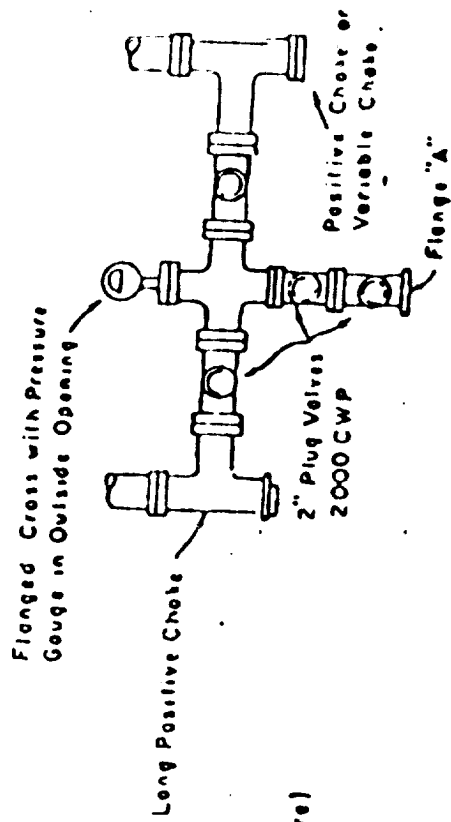
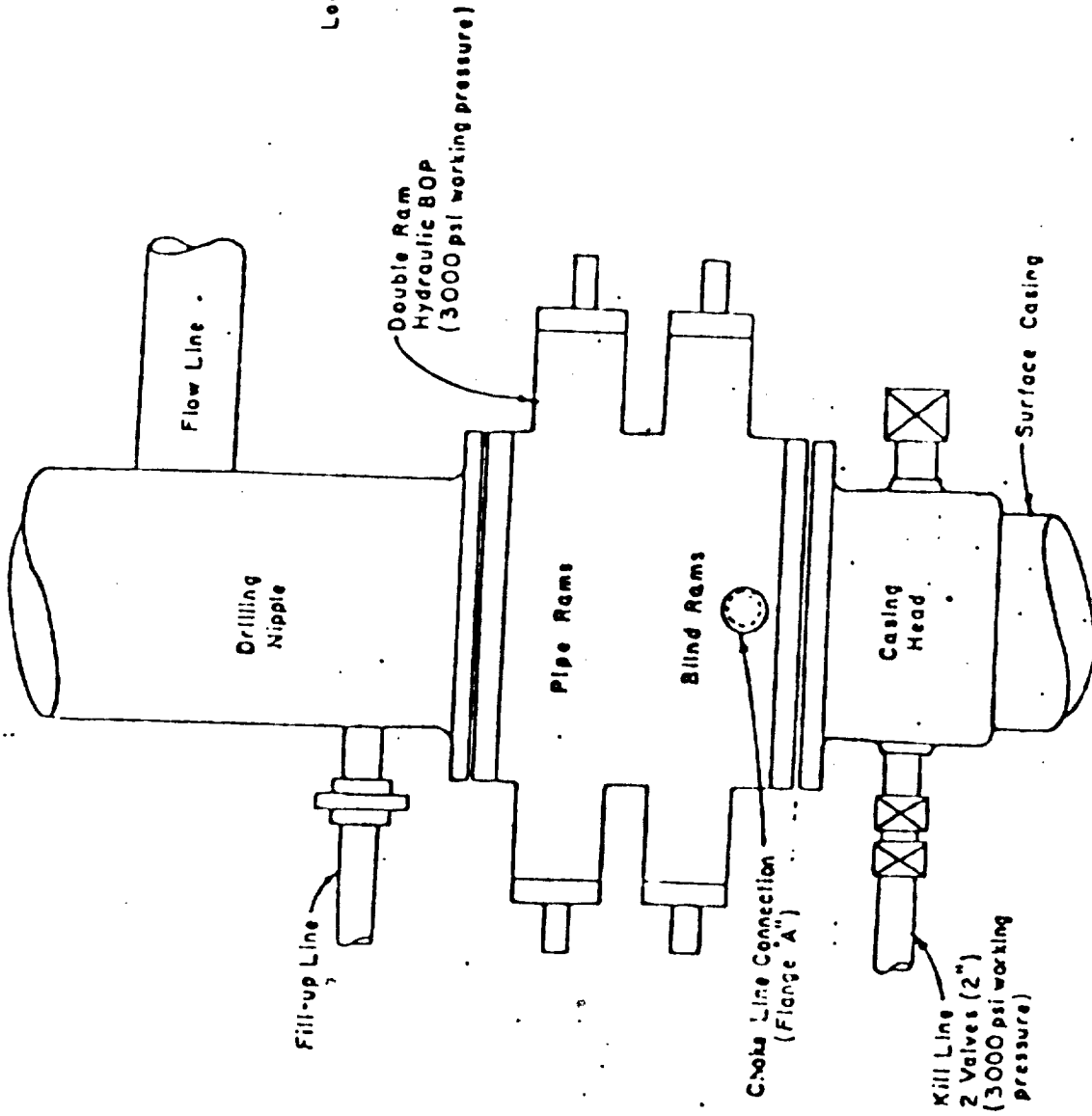
9. Any Anticipated Abnormal Pressures or Temperatures

No abnormal pressures or temperatures have been noted or reported in wells drilled in the area nor at the depths anticipated in this well.

No hydrogen sulfide or other hazardous fluids or gases have been found, reported or known to exist at these depths in the area.

10. Anticipated Starting Date and Duration of the Operations

The anticipated starting date will be as soon as possible after examination and approval of drilling requirements. Operations should be completed within 3 weeks after spudding the well and drilling to casing point.



PLAN VIEW-CHOKE MANIFOLD