



STATE OF NEW MEXICO
ENERGY AND MINERALS DEPARTMENT
OIL CONSERVATION DIVISION

August 19, 1984

TONY ANAYA
GOVERNOR

POST OFFICE BOX 2088
STATE LAND OFFICE BUILDING
SANTA FE, NEW MEXICO 87501
(505) 827-5800

Gulf Oil Exploration and Production
Company
P. O. Box 670
Hobbs, New Mexico 88240

Attention: R. C. Anderson

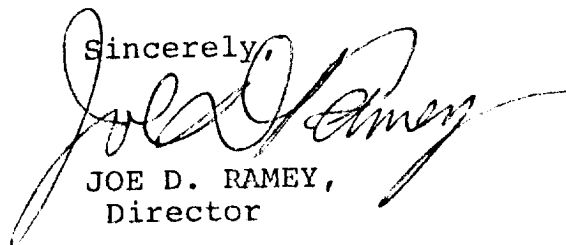
Administrative Order NSL-1873

Gentlemen:

Reference is made to your application for a non-standard location for your San Juan "R" Federal Well No. 1 to be located 2080 feet from the North line and 2140 feet from the East line of Section 12, Township 26 North, Range 12 West, NMPM, Gallegos Fruitland Pool, San Juan County, New Mexico. The NE/4 of said Section 12 is to be dedicated to the well.

By authority granted me under the provisions of Rule 104 FI, the above-described unorthodox location is hereby approved.

Sincerely,



JOE D. RAMEY,
Director

JDR/RLS/dr

cc: ✓ Oil Conservation Division - Aztec
Oil & Gas Engineering Committee - Hobbs
Bureau of Land Management - Farmington

RECEIVED
AUG 21 1984
OIL CON. D.
DIST. 3



STATE OF NEW MEXICO
ENERGY AND MINERALS DEPARTMENT

OIL CONSERVATION DIVISION
AZTEC DISTRICT OFFICE

1000 RIO BRAZOS ROAD
AZTEC, NEW MEXICO 87410
(505) 334-6178

OIL CONSERVATION DIVISION
BOX 2088
SANTA FE, NEW MEXICO 87501

DATE 8-9-84

RE: Proposed MC _____
Proposed DHC _____
Proposed NSL X _____
Proposed SWD _____
Proposed WFX _____
Proposed PMX _____

Gentlemen:

I have examined the application dated 7-27-84
for the Gulf Oil Exp/Prod. Co. - San Juan Fed. #1 G-12-26N-12W
Operator Lease and Well No. Unit, S-T-R

and my recommendations are as follows:

Approve =

Yours truly,

E. B. Burch

Gulf Oil Exploration and Production Company

R. C. Anderson
PRODUCTION MANAGER, HOBBS AREA

P. O. Box 670
Hobbs, NM 88240

July 25, 1984

RE: Application for Unorthodox
Well Location in the Gallegos
Fruitland Field, San Juan
County, New Mexico

Mr. Joe D. Ramey, Director
Oil Conservation Commission
P.O. Box 2088
Santa Fe, New Mexico 87501

Dear Sir:

Gulf Oil Corporation respectfully requests your administrative approval to drill the San Juan "R" Federal #1 in the Gallegos Fruitland Field at the unorthodox location of 2080' FNL and 2140' FEL, Section 12, T26N-R12W, San Juan County, New Mexico.

An unorthodox location is necessitated by the extent of cultivated fields of the Navajo Indian Irrigation Project over the proration unit (please see attached plats).

Offset operators have been notified by certified mail of our application.

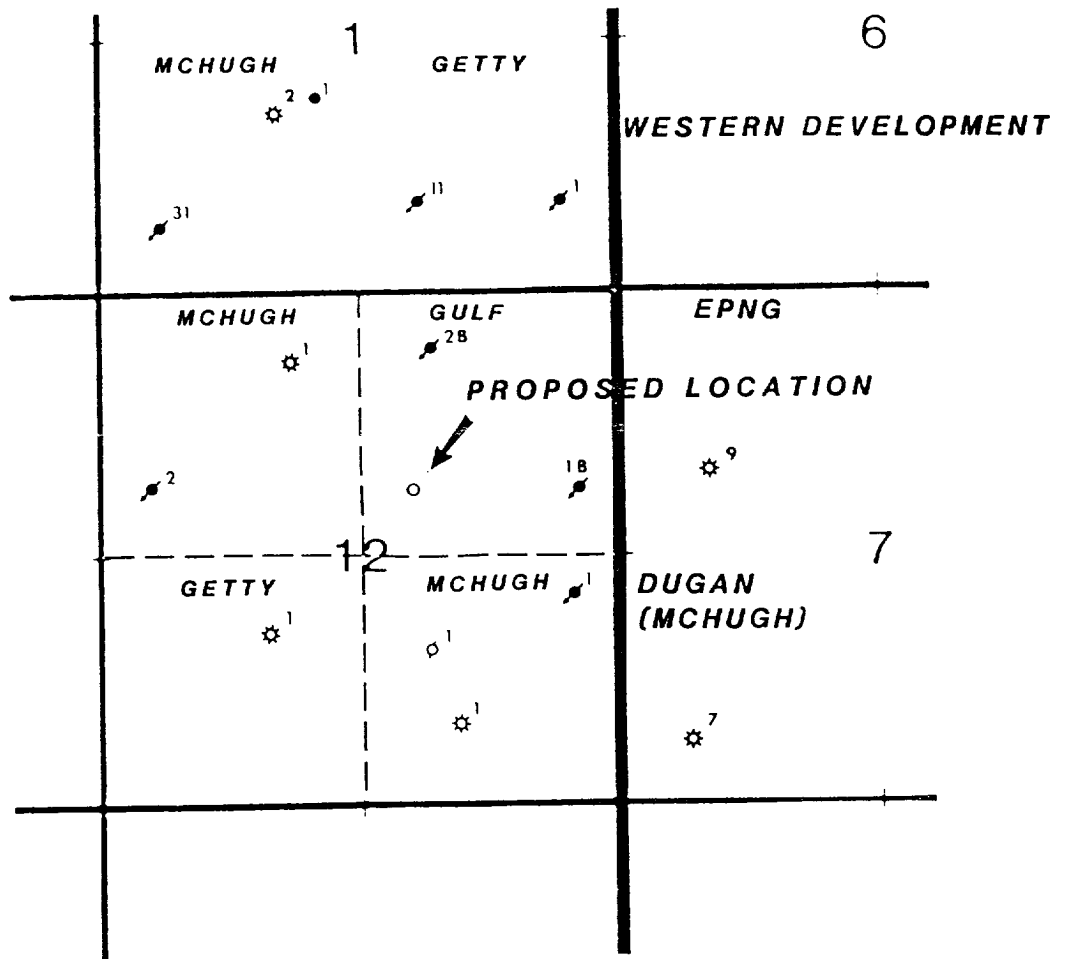
Yours very truly,


R. C. Anderson

DPJ/sm
Attachments
cc: NM OCD - Aztec
Getty Oil
McHugh & Assoc.
El Paso Exploration
Western Development

RECEIVED
JUL 27 1984
OIL CON. DIV.
DIST. 3

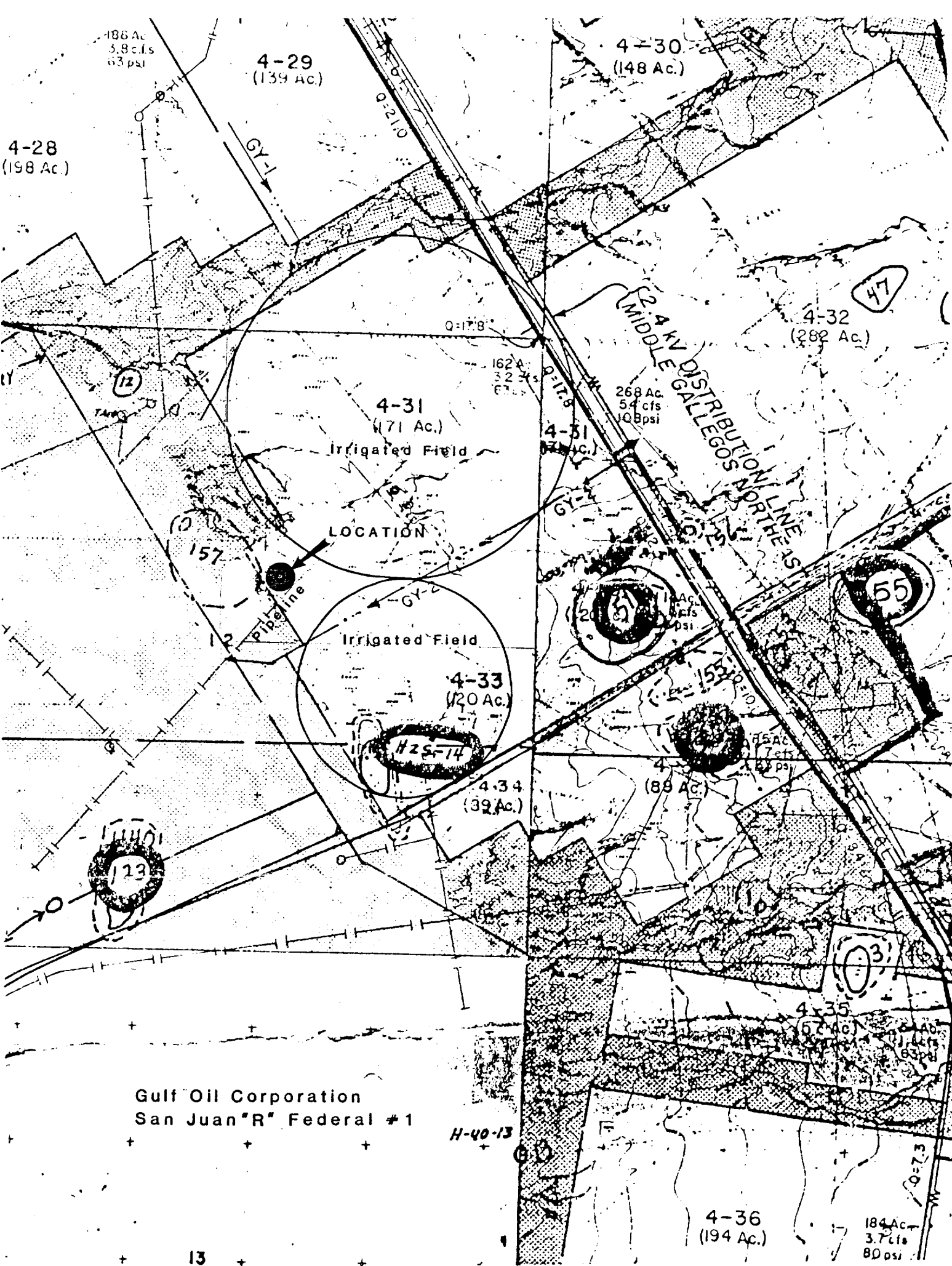




- ☆ Gas Well
- Oil Well
- Plugged Oil Well
- Protraction Unit

Gulf Oil Corporation
 San Juan "R" Fed #1
 Gallegos Fruitland
 Sec 12, T26N-R12W
 San Juan County, New Mexico

RECEIVED
 JUL 27 1984
 OIL CON. DIV.
 DIST. 3



Gulf Oil Corporation
San Juan "R" Federal #1

NEW MEXICO OIL CONSERVATION COMMISSION
WELL LOCATION AND ACREAGE DEDICATION PLAT

Form C-102
Supersedes C-
Effective 1-1-84

All distances must be from the outer boundaries of the Section.

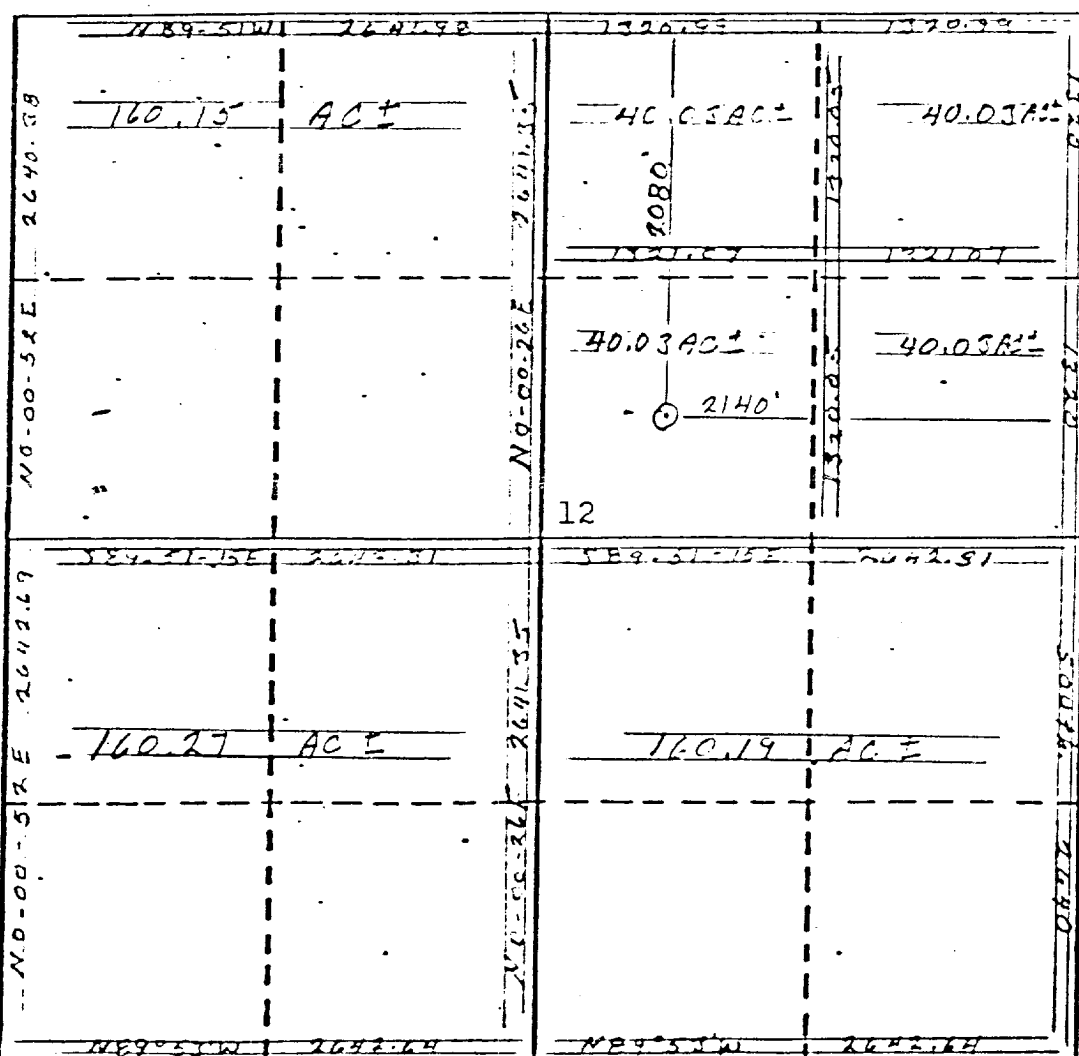
Operator GULF OIL CORPORATION		Lease SAN JUAN "R" FED.		Well No. 1
Unit Letter G	Section 12	Township 26 NORTH	Range 12 WEST	County SAN JUAN
Actual Footage Location of Well: 2080 feet from the NORTH line and 2140 feet from the EAST line				
Ground Level Elev. 5994	Producing Formation		Pool	Dedicated Acreage: Ac

1. Outline the acreage dedicated to the subject well by colored pencil or hatchure marks on the plat below.
2. If more than one lease is dedicated to the well, outline each and identify the ownership thereof (both as to working interest and royalty).
3. If more than one lease of different ownership is dedicated to the well, have the interests of all owners been consolidated by communitization, unitization, force-pooling, etc?

☐ Yes ☐ No If answer is "yes," type of consolidation _____

If answer is "no," list the owners and tract descriptions which have actually been consolidated. (Use reverse side of this form if necessary.) _____

No allowable will be assigned to the well until all interests have been consolidated (by communitization, unitization, forced-pooling, or otherwise) or until a non-standard unit, eliminating such interests, has been approved by the Commission.



CERTIFICATION

I hereby certify that the information contained herein is true and complete to the best of my knowledge and belief.

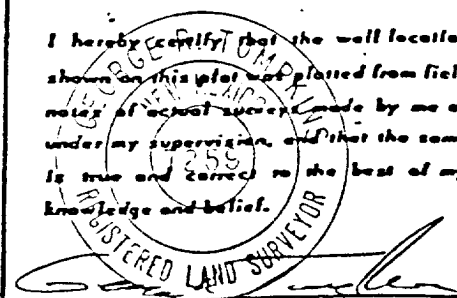
Name _____

Position _____

Company _____

Date _____

I hereby certify that the well location shown on this plat was plotted from field notes of actual survey made by me or under my supervision, and that the same is true and correct to the best of my knowledge and belief.



Date Surveyed

July 16, 1984

Registered Professional Engineer
and/or Land Surveyor

George R. Tompkins

Certificate No.

7259