

UNITED STATES
DEPARTMENT OF THE INTERIOR
GEOLOGICAL SURVEY

APPLICATION FOR PERMIT TO DRILL, DEEPEN, OR PLUG BACK

1a. TYPE OF WORK

DRILL ☒DEEPEN ☐PLUG BACK ☐

b. TYPE OF WELL

OIL
WELL ☒GAS
WELL ☐OTHER ☐SINGLE
ZONE ☒MULTIPLE
ZONE ☐

2. NAME OF OPERATOR

Energy Reserves Group, Inc.

3. ADDRESS OF OPERATOR

P.O. Box 3280, Casper, WY 82602

4. LOCATION OF WELL (Report location clearly and in accordance with any State requirements)

At surface

1650' FSL & 1980' FEL (NW/SE)

At proposed prod. zone

same

14. DISTANCE IN MILES AND DIRECTION FROM NEAREST TOWN OR POST OFFICE*

Approximately 16 miles South of Bloomfield, NM

15. DISTANCE FROM PROPOSED*

LOCATION TO NEAREST
PROPERTY OR LEASE LINE, FT.
(Also to nearest drlg. unit line, if any)

330'

18. DISTANCE FROM PROPOSED LOCATION*
TO NEAREST WELL, DRILLING, COMPLETED,
OR APPLIED FOR, ON THIS LEASE, FT.

150'

16. NO. OF ACRES IN LEASE

1920

19. PROPOSED DEPTH

5700'

17. NO. OF ACRES ASSIGNED
TO THIS WELL

40 W 80

20. ROTARY OR CABLE TOOLS

Rotary

21. ELEVATIONS (Show whether DF, RT, GR, etc.)

6360' GR ungraded

DRILLING OPERATIONS AUTHORIZED ARE
SUBJECT TO COMPLIANCE WITH ATTACHED

22. APPROX. DATE WORK WILL START*

As soon as approved

23. "GENERAL REQUIREMENTS"
PROPOSED CASING AND CEMENTING PROGRAM

SIZE OF HOLE	SIZE OF CASING	WEIGHT PER FOOT	SETTING DEPTH	QUANTITY OF CEMENT
12 1/4"	8 5/8"	24#	300'	200 SX.
7 7/8"	4 1/2"	10.5#	5700'	1650 SX.

This action is subject to technical and
procedural review pursuant to 43 CFR 3165.3
and appeal pursuant to 43 CFR 3165.4.

RECEIVED
JUN 26 1985
OIL CON. DIV.
DIST. 3

IN ABOVE SPACE DESCRIBE PROPOSED PROGRAM: If proposal is to deepen or plug back, give data on present productive zone and proposed new productive zone. If proposal is to drill or deepen directionally, give pertinent data on subsurface locations and measured and true vertical depths. Give blowout preventer program, if any.

24.

SIGNED

TITLE Administrator, Field Serv.

DATE 5-14-85

(This space for Federal or State office use)

PERMIT NO.

APPROVAL DATE

APPROVED BY

TITLE

CONDITIONS OF APPROVAL, IF ANY:

Well 104 formal
ds

NMOCC

APPROVED
AS AMENDED

JUN 24 1985
F. M. MILLENBACH
AREA MANAGER

NEW MEXICO OIL CONSERVATION COMMISSION
WELL LOCATION AND ACREAGE DEDICATION PLAT

Form C-102
Supersedes C-128
Effective 1-1-65

All distances must be from the outer boundaries of the Section.

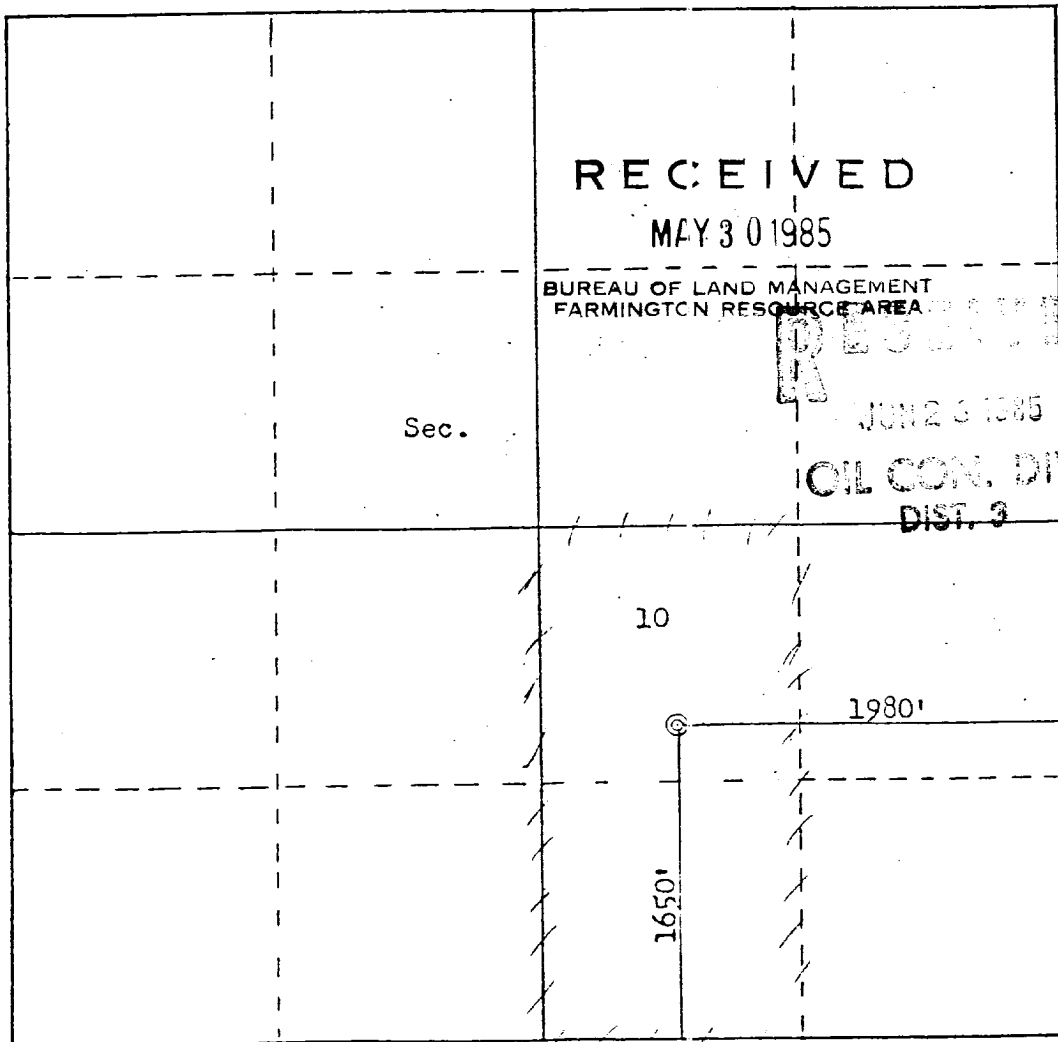
Operator ENERGY RESERVES GROUP			Lease RANDALL		Well No. 11
Unit Letter J	Section 10	Township 26N	Range 11W	County San Juan	
Actual Footage Location of Well:					
1650 feet from the South line and		1980 feet from the East line			
Ground Level Elev. 6360	Producing Formation Gallup	Pool Gallegos Gallup	Dedicated Acreage: 80 Acres		

1. Outline the acreage dedicated to the subject well by colored pencil or hatchure marks on the plat below.
2. If more than one lease is dedicated to the well, outline each and identify the ownership thereof (both as to working interest and royalty).
3. If more than one lease of different ownership is dedicated to the well, have the interests of all owners been consolidated by communitization, unitization, force-pooling, etc?

☐ Yes ☐ No If answer is "yes," type of consolidation _____

If answer is "no," list the owners and tract descriptions which have actually been consolidated. (Use reverse side of this form if necessary.) _____

No allowable will be assigned to the well until all interests have been consolidated (by communitization, unitization, forced-pooling, or otherwise) or until a non-standard unit, eliminating such interests, has been approved by the Commission.



RECEIVED

MAY 30 1985

BUREAU OF LAND MANAGEMENT
FARMINGTON RESOURCE AREA

JUN 23 1985

OIL CON. DIV.
DIST. 3

CERTIFICATION

I hereby certify that the information contained herein is true and complete to the best of my knowledge and belief.

Name
William J. Plant

Position
Administrator, Field Services

Company
Energy Reserves Group, Inc.

Date
5-3-85

I hereby certify that the well location shown on this plat was plotted from field notes of actual surveys made by me or under my supervision, and that the same is true and correct to the best of my knowledge and belief.

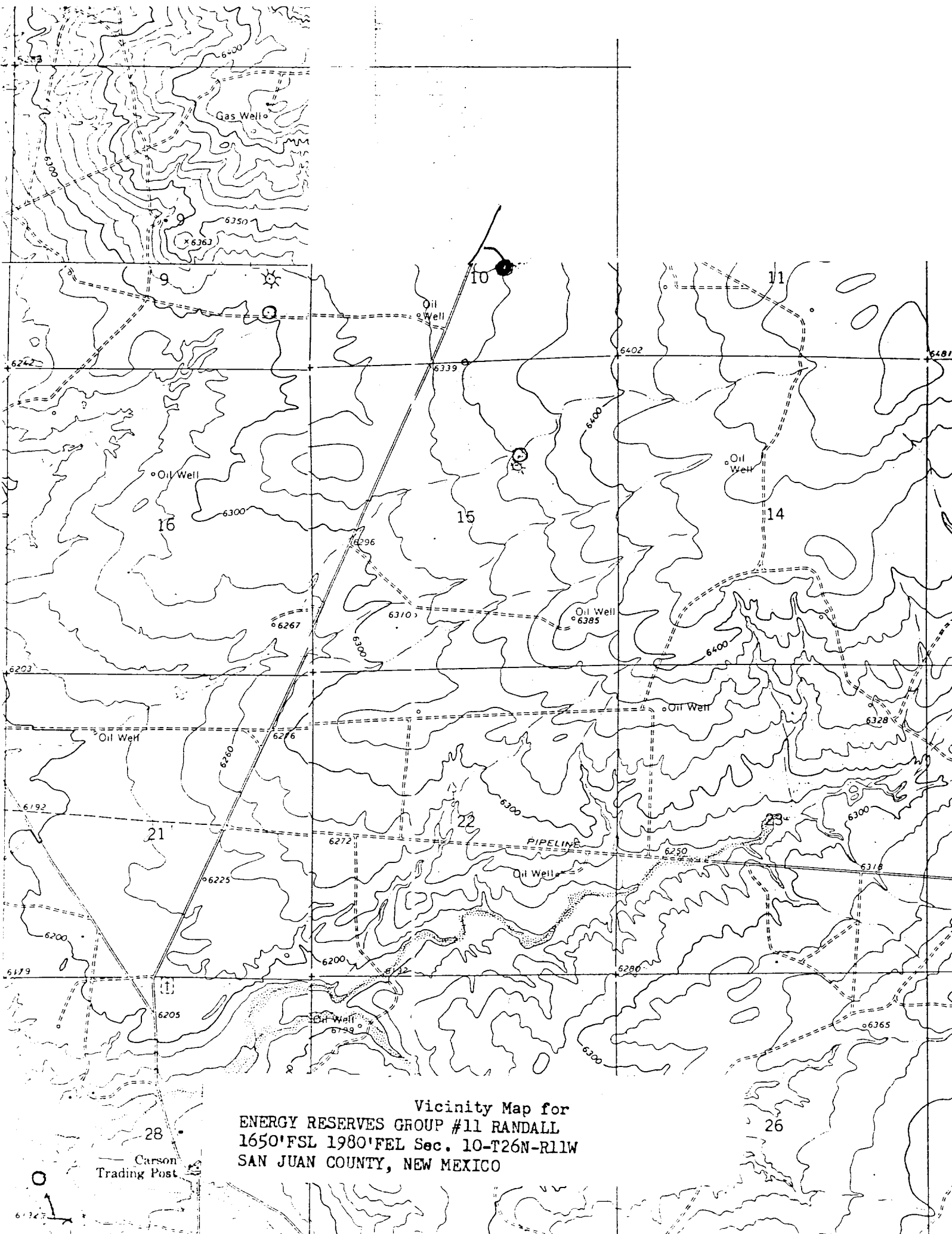
Date Surveyed
April 24, 1985

Registered Professional Engineer
and Land Surveyor

Fred B. Kerr Jr.

Certificate No. **4222**
3950

Scale: 1"=1000'



Vicinity Map for
ENERGY RESERVES GROUP #11 RANDALL
1650'FSL 1980'FEL Sec. 10-T26N-R11W
SAN JUAN COUNTY, NEW MEXICO