

UNITED STATES
DEPARTMENT OF THE INTERIOR
BUREAU OF LAND MANAGEMENT

APPLICATION FOR PERMIT TO DRILL, DEEPEN, OR PLUG BACK

1A. TYPE OF WORK
DRILL ☒ DEEPEN ☐ PLUG BACK ☐

B. TYPE OF WELL
OIL WELL ☐ GAS WELL ☒ OTHER ☐
SINGLE ZONE ☒ MULTIPLE ZONE ☐

2. NAME OF OPERATOR
El Paso Natural Gas Company

3. ADDRESS OF OPERATOR
PO Box 4289, Farmington, NM 87499

4. LOCATION OF WELL (Report location clearly and in accordance with applicable State requirements)
At surface
1180'S, 795'W
At proposed prod. zone

14. DISTANCE IN MILES AND DIRECTION FROM NEAREST TOWN OR POST OFFICE*
18 miles SE of Bloomfield, NM

16. NO. OF ACRES IN LEASE
Unit

18. DISTANCE FROM PROPOSED LOCATION*
TO NEAREST WELL, DRILLING, COMPLETED,
OR APPLIED FOR, ON THIS LEASE, FT.
3200'

21. ELEVATIONS (Show whether DF, RT, GR, etc.)
6495' GL

23. PROPOSED CASING AND CEMENTING PROGRAM

SIZE OF HOLE	SIZE OF CASING	WEIGHT PER FOOT	SETTING DEPTH	QUANTITY OF CEMENT
12 1/4"	8 5/8"	36.0#	200'	165 cu.ft.circulated
7 7/8"	4 1/2"	10.5#&11.6#	6740'	1439 cu.ft.circulated

1st stage - 417 cu.ft. to cover Gallup
2nd stage - 514 cu.ft. to cover Mesa Verde
3rd stage - 508 cu.ft. to cover surface

Selectively perforate and sand water fracture the Dakota formation.

A 3000 psi WP and 6000 psi test double gate preventer equipped with blind and pipe rams will be used for blow out prevention on this well.

This gas is dedicated.

The S/2 of Section 20 is dedicated to this well.

RECEIVED

JAN 13 1986

OIL CON. DIV.

IN ABOVE SPACE-DESCRIBE PROPOSED PROGRAM: If proposal is to deepen or plug back, give data on present productive zone and proposed new productive zone. If proposal is to drill or deepen directionally, give pertinent data on subsurface locations and measured and vertical depths. Give blowout preventer program, if any.

24. SIGNED Peggy L. Daak TITLE Drilling Clerk DATE 12-12-85

(This space for Federal or State office use)

PERMIT NO. _____ APPROVAL DATE _____

APPROVED BY _____ TITLE _____ DATE _____

CONDITIONS OF APPROVAL, IF ANY:

NMOCC

*See Instructions On Reverse Side

OIL CONSERVATION DIVISION

STATE OF NEW MEXICO
ENERGY AND MINERALS DEPARTMENTP. O. BOX 2088
SANTA FE, NEW MEXICO 87501Form C-102
Revised 10-1-78

All distances must be from the outer boundaries of the Section.

Operator El Paso Natural Gas Company		Lease Huerfano Unit (NM 03493)		Well No. 164E
Unit Letter M	Section 20	Township 26	Range 9	County San Juan
Actual Footage Location of Well: 1180 feet from the South line and 795 feet from the West line				
Ground Level Elev. 6495	Producing Formation Dakota	Pool Basin	Dedicated Acreage: 320 Acres	
<p>1. Outline the acreage dedicated to the subject well by colored pencil or hatchure marks on the plat below.</p> <p>2. If more than one lease is dedicated to the well, outline each and identify the ownership thereof (both as to working interest and royalty).</p> <p>3. If more than one lease of different ownership is dedicated to the well, have the interests of all owners been consolidated by communitization, unitization, force-pooling, etc?</p> <p><input checked="" type="checkbox"/> Yes <input type="checkbox"/> No If answer is "yes," type of consolidation <u>Unitization</u></p> <p>If answer is "no," list the owners and tract descriptions which have actually been consolidated. (Use reverse side of this form if necessary.)</p> <p>No allowable will be assigned to the well until all interests have been consolidated (by communitization, unitization, forced-pooling, or otherwise) or until a non-standard unit, eliminating such interests, has been approved by the Division.</p>				

RECEIVED

DEC 16 1985

BUREAU OF LAND MANAGEMENT
FARMINGTON RESOURCE AREA

Sec.

20

RECEIVED

JAN 13 1986
OIL CON. DIV.
DIST. 3

CERTIFICATION

I hereby certify that the information contained herein is true and complete to the best of my knowledge and belief.

Name

Drilling Clerk

Position

El Paso Natural Gas

Company

12-12-85

Date

I hereby certify that the well location shown on this plat was plotted from field notes, of actual surveys made by me or under my supervision, and that the same is true and correct to the best of my knowledge and belief.

November 11, 1985

Date Surveyed

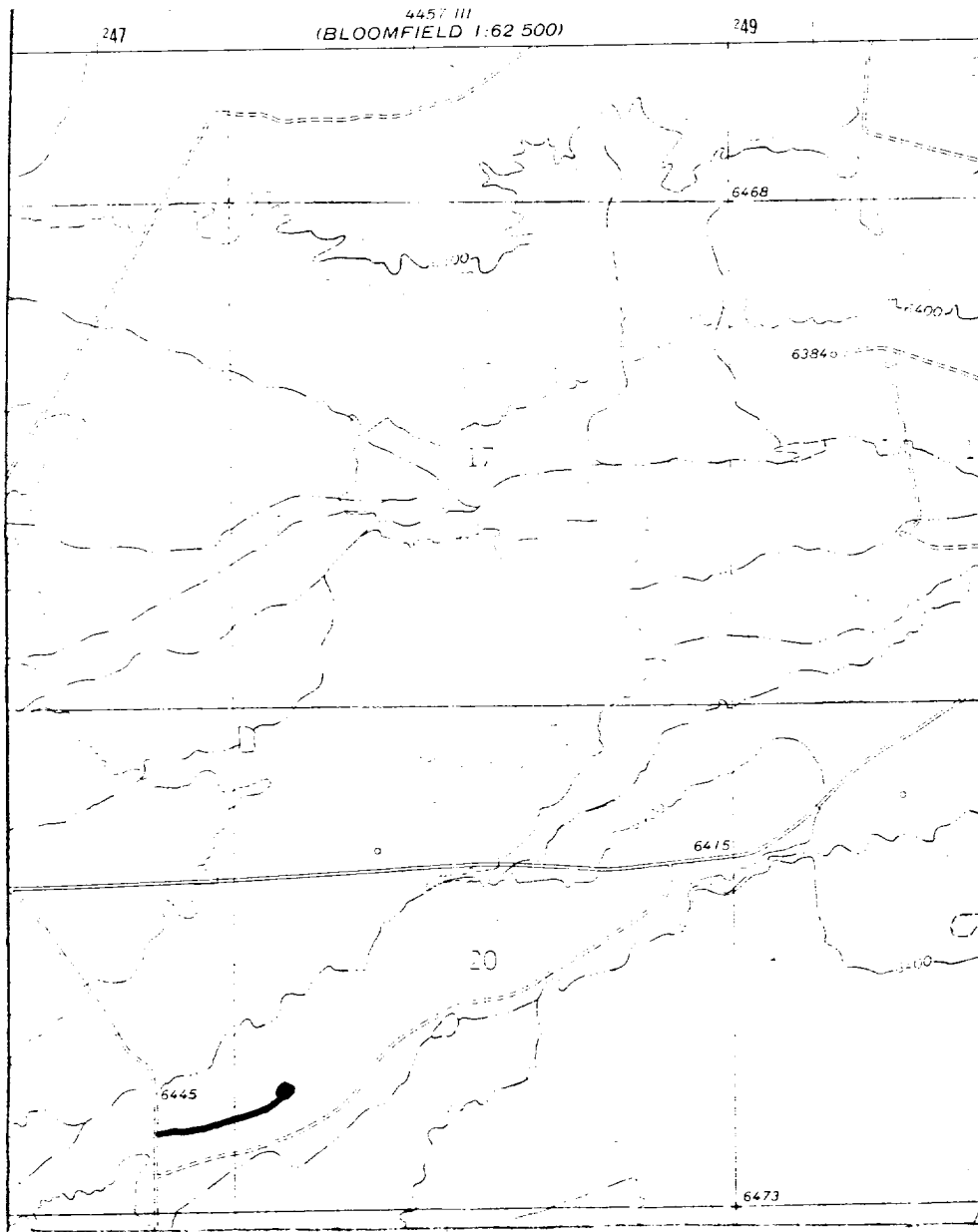
David O. Vilven

Registered Professional Engineer
and/or Land Surveyor

Certificate No.

1760

Huerfano Unit #164 E
SWSW 20-26-9 (DK)



Map #1

LEGEND OF RIGHT-OF-WAYS

EXISTING ROADS	—
EXISTING PIPELINES	+ + +
EXISTING ROAD & PIPELINE	+ + + +
PROPOSED ROADS	—
PROPOSED PIPELINES	+ + +
PROPOSED ROAD & PIPELINE	+ + + +