

UNITED STATES  
DEPARTMENT OF THE INTERIOR  
BUREAU OF LAND MANAGEMENT

30-045-28329

APPLICATION FOR PERMIT TO DRILL, DEEPEN, OR PLUG BACK

1a. TYPE OF WORK DRILL <input checked="" type="checkbox"/> DEEPEN <input type="checkbox"/> PLUG BACK <input type="checkbox"/>			5. LEASE DESIGNATION AND SERIAL NO. NM 029144		
b. TYPE OF WELL OIL WELL <input type="checkbox"/> GAS WELL <input checked="" type="checkbox"/> OTHER <input type="checkbox"/> SINGLE ZONE <input checked="" type="checkbox"/> MULTIPLE ZONE <input type="checkbox"/>			6. IF INDIAN, ALLOTTEE OR TRIBE NAME		
2. NAME OF OPERATOR Mesa Operating Limited Partnership			7. UNIT AGREEMENT NAME		
3. ADDRESS OF OPERATOR P.O. Box 2009, Amarillo, Texas 79189			8. FARM OR LEASE NAME FC FEDERAL		
4. LOCATION OF WELL (Report location clearly and in accordance with any State requirements.) At surface: 250 2155' FSL & 970' FWL At proposed prod. zone: 1525' Same			9. WELL NO. # 16		
14. DISTANCE IN MILES AND DIRECTION FROM NEAREST TOWN OR POST OFFICE* 15 miles SE of Blanco, New Mexico			10. FIELD AND POOL, OR WILDCAT Basin Fruitland Coal		
15. DISTANCE FROM PROPOSED* LOCATION TO NEAREST PROPERTY OR LEASE LINE, FT. (Also to nearest drlg. unit line, if any) 970'		16. NO. OF ACRES IN LEASE 320	17. NO. OF ACRES ASSIGNED TO THIS WELL W/2 320		
18. DISTANCE FROM PROPOSED LOCATION* TO NEAREST WELL, DRILLING, COMPLETED, OR APPLIED FOR, ON THIS LEASE, FT. 1300'		19. PROPOSED DEPTH 2330'	20. ROTARY OR CABLE TOOLS Rotary		
21. ELEVATIONS (Show whether DF, RT, GR, etc.) 6049' GR 6007'			22. APPROX. DATE WORK WILL START*		
23. PROPOSED CASING AND CEMENTING PROGRAM			DRILLING OPERATIONS AUTHORIZED ARE SUBJECT TO COMPLIANCE WITH ATTACHED GENERAL REQUIREMENTS		

SIZE OF HOLE	SIZE OF CASING	WEIGHT PER FOOT	SETTING DEPTH	GENERAL REQUIREMENTS
12 1/4"	8 5/8"	24#	200'	150 'B' + 2% CaCl (Surface)
7 7/8"	5 1/2"	17#	2330'	300 Poz/200 "B" (Surface)

Propose to spud well with 12 1/4" hole and drill to 200' and set 8 5/8" surface casing. Will cement with 150 sx of Class "B" (177 Ft<sup>3</sup>) and raise cement to surface. Will nipple up 2000 psi BOP assembly and drill 7 7/8" hole to TD of + 2330' with fresh water mud system. Will then log well and evaluate for possible commercial production. If successful, will then run 5 1/2" casing to + 2330' and cement with 300 sx Pozmix (570 Ft<sup>3</sup>) followed by 200 sx (230 Ft<sup>3</sup>) Class "B" cement. Will move off drilling rig and move in completion unit.

xc: BLM-Farmington (0+5), NMOCD-Aztec (1), WF, Reg, Land, Expl., Drlg.

IN ABOVE SPACE DESCRIBE PROPOSED PROGRAM: If proposal is to deepen or plug back, give data on present productive zone and proposed new productive zone. If proposal is to drill or deepen directionally, give pertinent data on subsurface locations and measured and true vertical depths. Give blowout preventer program, if any.

24. SIGNED: <i>Carey L. McKee</i>		TITLE: Regulatory Analyst		DATE: 6/20/90	
(This space for Federal or State use)		RECEIVED		AS AMENDED	
PERMIT NO.		OCT 11 1990		SEP 28 1990	
APPROVED BY: <i>OK</i>		TITLE: OIL CON. DIV.		AREA MANAGER	
CONDITIONS OF APPROVAL, IF ANY:		NMOCD		DIST. 3	
OIL CON. DIV.		DIST. 3			

\*See Instructions On Reverse Side

Submit to Appropriate  
District Office  
State Lease - 4 copies  
Fee Lease - 3 copies

State of New Mexico  
Energy, Minerals and Natural Resources Department

Form C-102  
Revised 1-1-89

OIL CONSERVATION DIVISION

P.O. Box 2088

Santa Fe, New Mexico 87504-2088

DISTRICT I

P.O. Box 1980, Hobbs, NM 88240

DISTRICT II

P.O. Drawer DD, Artesia, NM 88210

DISTRICT III

1000 Rio Brazos Rd., Aztec, NM 87410

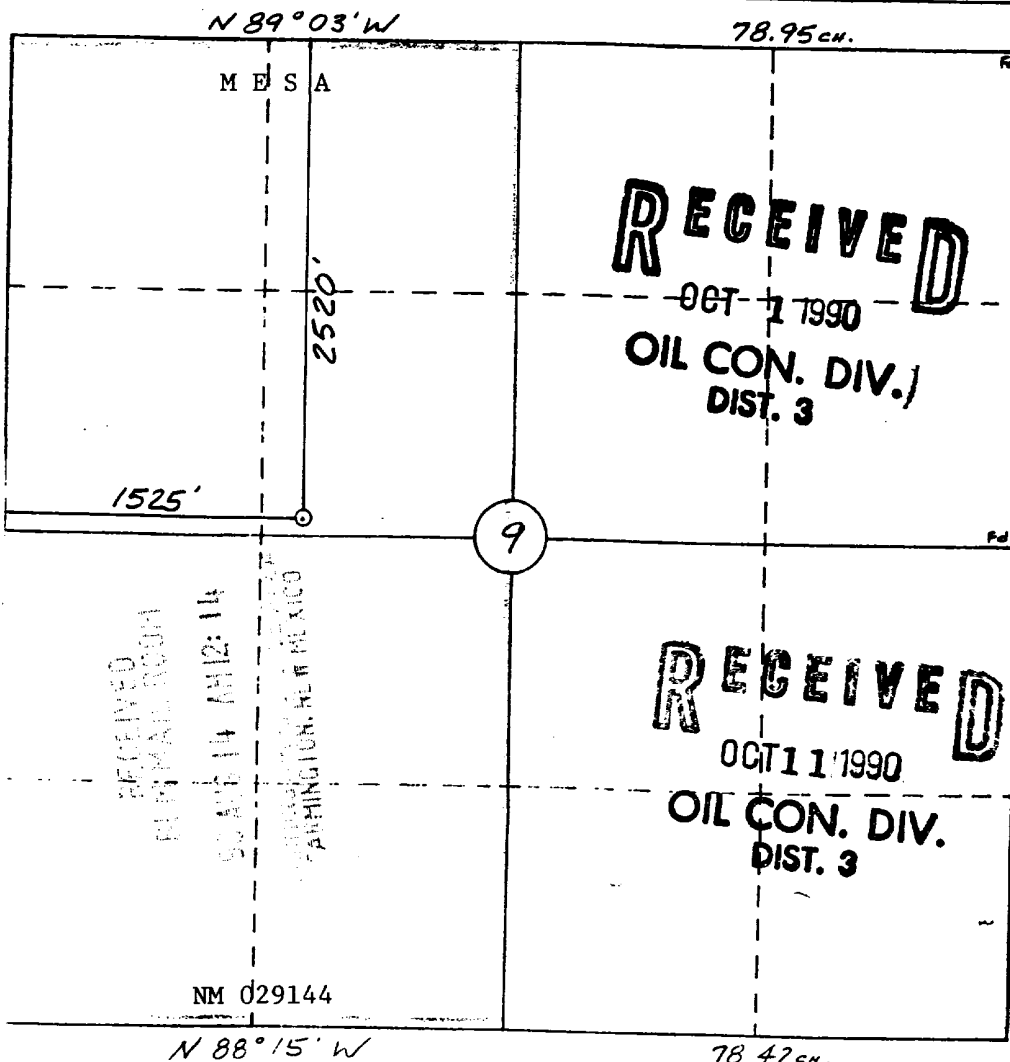
WELL LOCATION AND ACREAGE DEDICATION PLAT

All Distances must be from the outer boundaries of the section

Operator <b>MESA OPERATING LIMITED PARTNERSHIP</b>			Lease <b>FC FEDERAL</b>		Well No. <b>16</b>
Unit Letter <b>F</b>	Section <b>9</b>	Township <b>27 N</b>	Range <b>8 W</b>	County <b>San Juan</b>	
Actual Footage Location of Well: <b>2520</b> feet from the <b>North</b> line and <b>1525</b> feet from the <b>West</b> line					
Ground level Elev. <b>6007</b>	Producing Formation <b>Fruitland Coal</b>		Pool <b>Basin Fruitland Coal</b>	Dedicated Acreage: <b>W/2 320 Acres</b>	

1. Outline the acreage dedicated to the subject well by colored pencil or hatchure marks on the plat below.
2. If more than one lease is dedicated to the well, outline each and identify the ownership thereof (both as to working interest and royalty).
3. If more than one lease of different ownership is dedicated to the well, have the interest of all owners been consolidated by communitization, unitization, force-pooling, etc?  
☐ Yes ☒ No If answer is "yes" type of consolidation \_\_\_\_\_  
If answer is "no" list the owners and tract descriptions which have actually been consolidated. (Use reverse side of this form if necessary.) \_\_\_\_\_  
No allowable will be assigned to the well until all interests have been consolidated (by communitization, unitization, forced-pooling, or otherwise) or until a non-standard unit, eliminating such interest, has been approved by the Division.

0 330 660 990 1320 1650 1980 2310 2640 2000 1500 1000 500 0



OPERATOR CERTIFICATION

I hereby certify that the information contained herein is true and complete to the best of my knowledge and belief.

Signature  
*Carolyn L. McKee*  
Printed Name  
**Carolyn L. McKee**

Position  
**Sr. Regulatory Analyst**

Company  
**Mesa Ltd Partnership**

Date  
**8/9/90**

SURVEYOR CERTIFICATION

I hereby certify that the well location shown on this plat was plotted from field notes of actual surveys made by me or under my supervision, and that the same is true and correct to the best of my knowledge and belief.

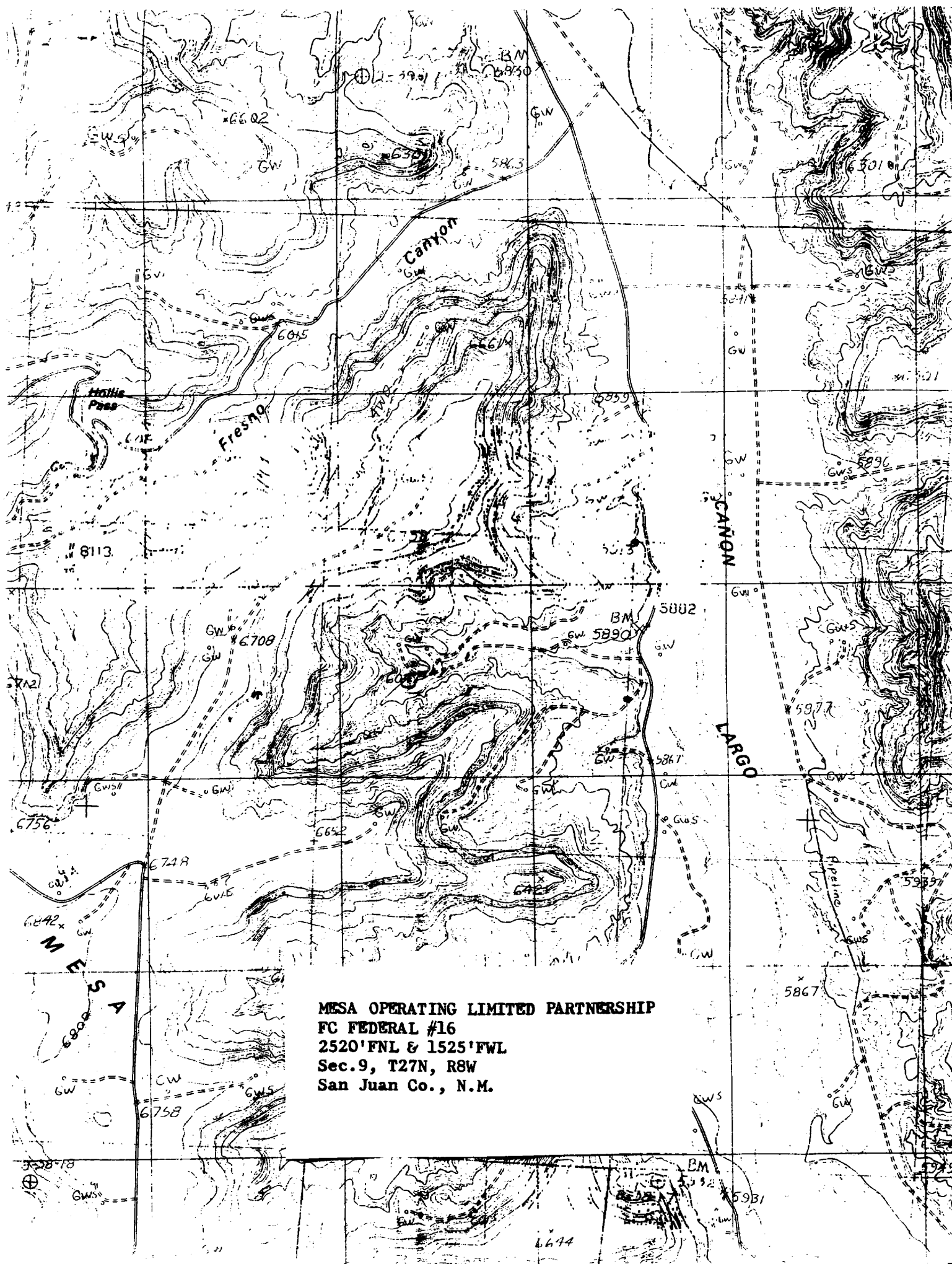
7-28-90

Date Surveyed  
**William E. Mahrtke II**

Signature & Seal of Professional Surveyor

NE MEXICO  
#8466

Certificate No. 8466



MESA OPERATING LIMITED PARTNERSHIP  
FC FEDERAL #16  
2520'FNL & 1525'FWL  
Sec.9, T27N, R8W  
San Juan Co., N.M.