

NUMBER OF COPIES RECEIVED	
DISTRIBUTION	
SANTA FE	
FILE	
U.S.G.S.	
LAND OFFICE	
TRANSPORTER	OIL GAS
PRODUCTION OFFICE	
OPERATOR	

**NEW MEXICO OIL CONSERVATION COMMISSION**  
**Santa Fe, New Mexico**

Form C-101  
Revised (12/1/55)

## NOTICE OF INTENTION TO DRILL

Notice must be given to the District Office of the Oil Conservation Commission and approval obtained before drilling or recompletion begins. If changes in the proposed plan are considered advisable, a copy of this notice showing such changes will be returned to the sender. Submit this notice in **QUINTUPLICATE**. One copy will be returned following approval. See additional instructions in Rules and Regulations of the Commission. **If State Land submit 6 Copies Attach Form C-128 in triplicate to first 3 copies of form C-101**

**Park View, New Mexico**

**June 19, 1961**

(Place)

(Date)

OIL CONSERVATION COMMISSION  
SANTA FE, NEW MEXICO

Gentlemen:

You are hereby notified that it is our intention to commence the Drilling of a well to be known as

**Tamaseco Oil Corporation**

(Company or Operator)

**Round Ranch**

(Lease)

Well No. **27-2**

(Unit)

The well is

located **130'** feet from the **North** line and **1501'** feet from the **East** line of Section **27**, T**28 N.**, R **1 E.**, NMPM.

(GIVE LOCATION FROM SECTION LINE)

Pool, **Nio Arriba** County

If State Land the Oil and Gas Lease is No.

If patented land the owner is **Dr. M. A. Maddox**

Address **Box 1634, Amarillo, Texas**

We propose to drill well with drilling equipment as follows:

**Running 1500 portable rotary using 990 C.P.M. compressors**

The status of plugging bond is **Notion Wide**

Drilling Contractor **Jewel Adkinsen, 201 Wyoming S.E., Albuquerque, N.M.**

We intend to complete this well in the **GUTHRIE or Dakota**

formation at an approximate depth of **1420 to 1500'** feet.

### CASING PROGRAM

We propose to use the following strings of Casing and to cement them as indicated:

Size of Hole	Size of Casing	Weight per Foot	New or Second Hand	Depth	Sacks Cement
<b>8 3/4"</b>	<b>7"</b>	<b>22#</b>	<b>New</b>	<b>250'</b>	<b>circulated</b>
<b>6 1/2"</b>	<b>4 1/2"</b>	<b>9 1/2#</b>	<b>New</b>	<b>to production</b>	<b>60 sacks</b>

If changes in the above plans become advisable we will notify you immediately.

ADDITIONAL INFORMATION (If recompletion give full details of proposed plan of work.)

Approved.....  
Except as follows:

**Subject to approval of  
NDM standard unit**

OIL CONSERVATION COMMISSION

By.....

*Emergency Unit*

*Field C-16 for NDM + N.S.L.*

Sincerely yours,

**Tamaseco Oil Corporation**

(Company or Operator)

By.....

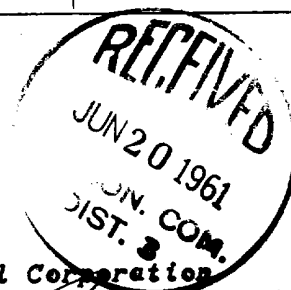
*H. K. Riddle*

Position **President**

Send Communications regarding well to

Name **H. K. Riddle**

Address **Park View, New Mexico**



NUMBER OF COPIES RECEIVED	
DISTRIBUTION	
SANTA FE	
FILE	
U.S.G.S.	
LAND OFFICE	
TRANSPORTER	OIL GAS
PRODUCTION OFFICE	
OPERATOR	

**NEW MEXICO OIL CONSERVATION COMMISSION**  
**WELL LOCATION AND ACREAGE DEDICATION PLAT**  
 SEE INSTRUCTIONS FOR COMPLETING THIS FORM ON THE REVERSE SIDE

FORM C-128  
 Revised 5/1/57

**SECTION A**

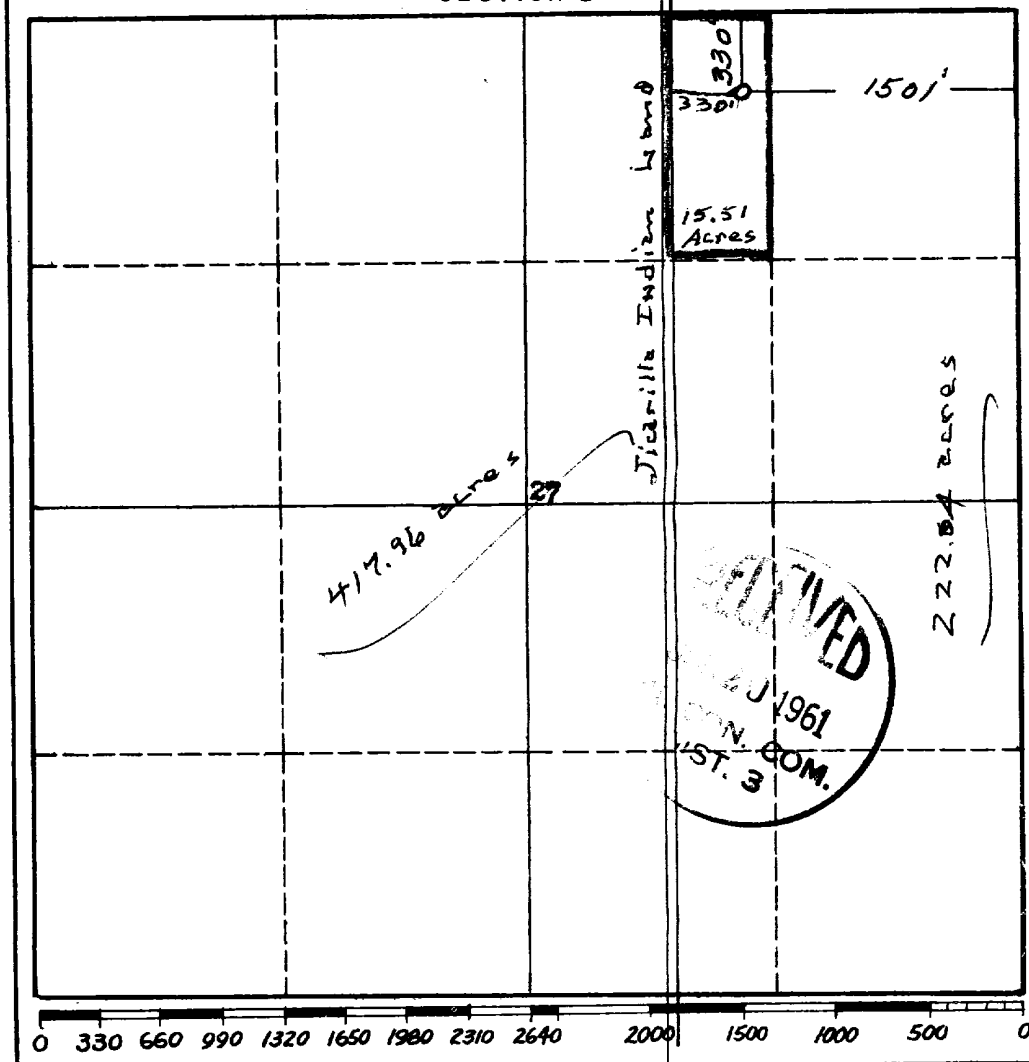
Operator <b>TAMANACO OIL CORPORATION</b>		Lease <b>POUND RANCH</b>		Well No. <b>27-B</b>
Unit Letter <b>B</b>	Section <b>27</b>	Township <b>28 NORTH</b>	Range <b>1 EAST</b>	County <b>RIO ARriba</b>
Actual Footage Location of Well: <b>330</b> feet from the <b>NORTH</b> line and <b>1501</b> feet from the <b>EAST</b> line				

Ground Level Elev.	Producing Formation	Pool	Dedicated Acreage: Acres
<b>Location based on extension of U.S. Public survey lines North and east from Jicarilla Indian Reservation</b>			

1. Is the Operator the only owner in the dedicated acreage outlined on the plat below? YES ☒ NO \_\_\_\_ . ("Owner" means the person who has the right to drill into and to produce from any pool and to appropriate the production either for himself or for himself and another. (65-3-29 (e) NMSA 1935 Comp.)
2. If the answer to question one is "no," have the interests of all the owners been consolidated by communitization agreement or otherwise? YES \_\_\_\_ NO \_\_\_\_ . If answer is "yes," Type of Consolidation \_\_\_\_\_
3. If the answer to question two is "no," list all the owners and their respective interests below:

Owner	Land Description

**SECTION B**



**CERTIFICATION**

I hereby certify that the information in SECTION A above is true and complete to the best of my knowledge and belief.

*[Signature]*  
 Name  
 Position  
**Tamanaco Oil Corp.**  
 Company  
**6-19-61**  
 Date

I hereby certify that the well location shown on the plat in SECTION B was plotted from field notes of actual surveys made by me or under my supervision, and that the same is true and correct to the best of my knowledge and belief.

Date Surveyed  
**6-16-61**  
 Registered Professional Engineer and/or Land Surveyor  
*[Signature]*  
**G. H. Denton**  
 Certificate No.  
**662**

## INSTRUCTIONS FOR COMPLETION OF FORM C-128

1. Operator shall furnish and certify to the information called for in Section A.
  2. Operator shall outline the dedicated acreage for *both* oil and gas wells on the plat in Section B.
  3. A registered professional engineer or land surveyor registered in the State of New Mexico or approved by the Commission shall show on the plat the location of the well and certify this information in the space provided.
  4. All distances shown on the plat must be from the outer boundaries of the Section.
  5. If additional space is needed for listing owners and their respective interests as required in question 3 of Section A, please use space below.
-