

UNITED STATES
DEPARTMENT OF THE INTERIOR
BUREAU OF LAND MANAGEMENT

RECEIVED
FIM

Sundry Notices and Reports on Wells

57 NOV 25 PM 2:13
070 FARMINGTON, NM

1. Type of Well
GAS

5. Lease Number
SF-079521
If Indian, All. or
Tribe Name

2. Name of Operator

BURLINGTON
RESOURCES OIL & GAS COMPANY

3. Address & Phone No. of Operator

PO Box 4289, Farmington, NM 87499 (505) 326-9700

4. Location of Well, Footage, Sec., T, R, M

990' FSL, 990' FWL, Sec. 32, T-28-N, R-5-W, NMPM

7. Unit Agreement Name

San Juan 28-5 Unit
8. Well Name & Number
San Juan 28-5 U #38
9. API Well No.
30-039-07229
10. Field and Pool
Blanco Mesaverde
11. County and State
Rio Arriba Co, NM

12. CHECK APPROPRIATE BOX TO INDICATE NATURE OF NOTICE, REPORT, OTHER DATA

Type of Submission

Type of Action

<input checked="" type="checkbox"/> Notice of Intent	<input type="checkbox"/> Abandonment	<input type="checkbox"/> Change of Plans
<input type="checkbox"/> Subsequent Report	<input type="checkbox"/> Recompletion	<input type="checkbox"/> New Construction
<input type="checkbox"/> Final Abandonment	<input type="checkbox"/> Plugging Back	<input type="checkbox"/> Non-Routine Fracturing
	<input type="checkbox"/> Casing Repair	<input type="checkbox"/> Water Shut off
	<input type="checkbox"/> Altering Casing	<input type="checkbox"/> Conversion to Injection
	<input checked="" type="checkbox"/> Other - Pay add	

13. Describe Proposed or Completed Operations

It is intended to add pay to the Mesaverde formation of the subject well according to the attached procedure and wellbore diagram.

RECEIVED
DEC - 5 1997
OIL CON. DIV.
DIST. 3

14. I hereby certify that the foregoing is true and correct.

Signed *[Signature]* (JLDOpps) Title Regulatory Administrator Date 11/24/97

(This space for Federal or State Office use)

APPROVED BY */s/ Duane W. Spencer* Title _____ Date DEC - 3 1997

CONDITION OF APPROVAL, if any:

NMOC

San Juan 28-5 Unit #38
Menefee Pay Add Procedure
Unit M, Section 32, T28N, R5W
Lat: 36° - 36.7731'/Long: 107° - 23.25534'

The well is currently completed in the Cliffhouse and Point Lookout with a production rate of 50 MCFD and remaining reserves of 623 MMCF. It is intended to add the Menefee to the existing Mesaverde producer. The pay add will be sand fracture stimulated in a single stage using a total of 60,000 gals 30 lb linear gel and 90,000 lbs 20/40 sand.

1. Inspect location and test rig anchors. Comply with all NMOC, BLM, Forestry & BR rules and regulations. Dig flowback pit or set flowback tank. Haul to location a new or inspected 5700', 2-3/8" production string, 4 jts 2-7/8" N-80 tubing, 2-7/8" X 3-1/2" N-80 crossover, 5500', 3-1/2" N-80 frac string and 5-400 bbl frac tanks
2. MIRU. Fill one 400 bbl tank with 2% KCL water. Record and report SI pressures on tubing, casing and bradenhead. Lay blowdown line. Blow well down and kill with 2% KCL water as necessary. ND WH and NU BOP with flow tee and stripping head. Test operation of rams. NU blooie line and 2-7/8" relief line. Redress production wellhead as needed.
3. TOOH with 2" Mesaverde production string set at 5663'. LD 2" string. Send string in to be inspected and salvaged, if possible. Visually inspect tubing, note and report any scale in/on tubing.
4. PU and RIH with a 4-3/4" bit, 5-1/2" (15.5 lb/ft) casing scraper on the 2-3/8" tubing string hauled to location. Clean out to PBTD (~5700') with air. TOOH.
5. RU wireline. RIH and set CIBP at 5550'. RD wireline.
6. Load hole with 31 bbls (~1300') 2% KCL water. MIRU logging company. Run GR-CBL-CCL from PBTD til out of water. Evaluate CBL. Good cement bond must exist from PBTD to 5240' to continue with procedure.
7. RIH with 5-1/2" packer on 2-3/8" tubing. Set packer just above CIBP and pressure test to 3800 psi. Release packer and PUH to 5470'. Spot 200 gals 15% HCL across the Menefee perforation interval of 5306 to 5470'. TOOH.

All acid on this well to contain the following additives per 1000 gals.

2 gal	HAI-81M	Corrosion inhibitor
5 gal	FE-1A	Iron Control
5 gal	FE-2A	Iron Control
1 gal	SSO-21	Surfactant
1 gal	ClaSta XP	Clay control

8. RU wireline. Perforate Menefee as follows using select fire HSC guns loaded with Owens HSC-3125 302T 10 gram charges (Av. perf diameter - 0.29", Av. pen. -16.64" in concrete). Be sure to perforate from top down.

**5306', 5308', 5322', 5332', 5334', 5350', 5354', 5356', 5358', 5372', 5374',
5396', 5398', 5424', 5426', 5428', 5432', 5434', 5448', 5450', 5452', 5458',
5460', 5462', 5464', 5466', 5470' (27 holes total)**

RDMO wireline company.

9. Fill 5 - 400 bbl frac tanks with 2% KCL water. Filter all water to 25 microns if brought from sources with known solids contamination. Filtration is not necessary for city water. Four tanks are for gel and one tank is for breakdown and flush.
10. TIH with 5-1/2" packer, tubing tester, 4 jts 2-7/8" N-80 tubing, 2-7/8" X 3-1/2" N-80 crossover, and remaining 3-1/2", N-80 frac string. Set packer at 5270'. Close tubing tester and test frac string to 6000 psi.
11. RU stimulation company. Pressure test surface lines to 4800 psi. Monitor backside for communication. Breakdown and attempt to balloff Menefee perforations with 1500 gals 15% HCL and 200% excess RCN 7/8" 1.3 specific gravity perf balls to 3800 psi. Lower packer to 5480' to knock off perf balls. Reset packer at 5270'.

All acid on this well to contain the following additives per 1000 gals.

2 gal	HAI-81M	Corrosion inhibitor
5 gal	FE-1A	Iron Control
5 gal	FE-2A	Iron Control
1 gal	SSO-21	Surfactant
1 gal	ClaSta XP	Clay control

12. RU stimulation company. Hold a tailgate safety meeting. Pressure test surface treating lines to 6000 psi. **Maximum surface treating pressure is 5000 psi.** Monitor backside during stimulation. Fracture stimulate Menefee with 90,000 lbs 20/40 Arizona sand in 60,000 gals 30 lb linear gel at **40 BPM. Tag sand with 3 radioactive tracers.** Average surface treating pressure will be 3900 psi. Treat per the following schedule:

Stage	Water (gals)	Sand Volume (lbs)
Pad	15,000	
1.0 ppg	10,000	10,000
2.0 ppg	25,000	50,000
3.0 ppg	10,000	30,000
Flush (slickwater)	1,900	
Totals	61,900	90,000

Slow rate during flush. If well is on vacuum near end of frac job, cut flush as necessary to avoid overflushing.

Frac with the following additives per 1000 gals frac fluid. **Gel will be mixed on the fly.**

*	7.5 gal	LGC-8	Gel
*	1 gal	SSO-21	Surfactant
*	0.18 lb	BE-6	Biocide
*	0.4 lb	SP	Oxidizing Breaker
*	0.2 lb	GBW-3	Enzyme Breaker

RDMO stimulation company.

13. Open well through choke manifold and monitor flow. Flow at 20 BPH or less, if sand is observed. **Take pitot gauges when possible.** When pressures allow, release packer

San Juan 28-6 Unit #38
1998 Discretionary Menefee Pay Add

and TOOH. LD packer, 2-7/8" N-80 tubing, 2-7/8" X 3-1/2" crossover and 3-1/2" N-80 tubing.

14. RIH with 4-3/4" bit on 2-3/8" tubing and clean out to CIBP at 5550'. Monitor gas and water returns when applicable. Drill up CIBP. CO to PBTD with air.
15. When wellbore is sufficiently clean, TOH and RU Pro-Technics. Run an After-Frac log from 5550-5250'. RD Pro-Technics.
16. Squeeze to cover Ojo Alamo as necessary.
17. TIH with an expendable check, one 2-3/8" joint, standard SN and remaining 2-3/8" tubing. Broach tubing while running in hole. CO with air/mist to PBTD again, if necessary. Land tubing at 5680'. Pump off expendable check. ND BOP. NU WH. RDMO. Contact Production Operations for well tie-in.


Recommended:


Production Engineer

Approved:


Drilling Superintendent

Approved:


Team Leader

Contact:

Jennifer Dobson

599-4026 (work)

564-3244 (home)

324-2461 (pager)

San Juan 28-5 Unit #38
Pertinent Data Sheet
Lat: 36° - 36.7731°/Long: 107° - 23.25534'

General Well Information:

Location: 990 FSL, 990 FWL, Unit M, Section 32, T28N, R5W, Rio Arriba County, NM

Federal Lease #:	SF 079521	DP #:	50227A
Property #:	007973100	GW/NRI:	73.17/62.36
Current Field:	Blanco Mesaverde	Completed:	4/15/59
Spud:	3/30/59	DF Elevation:	6600'
GL Elevation:	6590'	PBTD:	5700'
TD:	5766'		

Casing Record:

Hole Size	Csg Size	Weight	Grade	Depth Set	Cmt Vol	Cmt Top
	10-3/4"	32.75 lb/ft	Spiral Weld	172'	120	Circ. to Sur.
9-5/8"	7-5/8"	26.4 lb/ft	J-55	3610'	138	2900 (TS)
6-3/4"	5-1/2"	15.5 lb/ft	J-55	3561-5762'	475	3561' (Sqz'd Liner Top)

Tubing Record:

Tubing Size	Weight	Grade	Depth Set	Number of Jts
2"	4.7 lb/ft	J-55	5636'	183
SN			5637'	1
Perf Sub			5638'	1
2" Bull Plugged Joint	4.7 lb/ft	J-55	5663'	1

Formation Tops:

Ojo Alamo:	2755'	Pictured Cliffs:	3404'	Menefee:	5225'
Kirtland:	2864'	Lewis:	3519'	Point Lookout:	5575'
Fruitland:	3180'	Cliffhouse:	5195'		

Logging Record:

Schlumberger Electrical (4/5/59), Gamma Ray-Neutron (4/9/59), Induction Log (4/9/59) and Schlumberger MicroLog (4/5/59).

Completion:

Point Lookout was perforated at 5588-98', 5604-18', 5630-40', 5658-72' and 5680-90' at 2 SPF. Fracture stimulated it with 50,700 gals water and 60,000 lbs sand at 74 BPM and 1500 psi. Dropped 75 balls for diversion.

Cliffhouse was perforated at 5216-28' at 6 SPF. Fracture stimulated it with 27,900 gals water and 30,000 lbs sand at 70 BPM and 1700 psi. Dropped 45 balls for diversion.

Workover History:

None.

Production History:

Well was is currently making 60 MCFD from the Mesaverde. Current Mesaverde EUR: 2,527 MMCF
Mesaverde Cum: 1,904 MMCF.

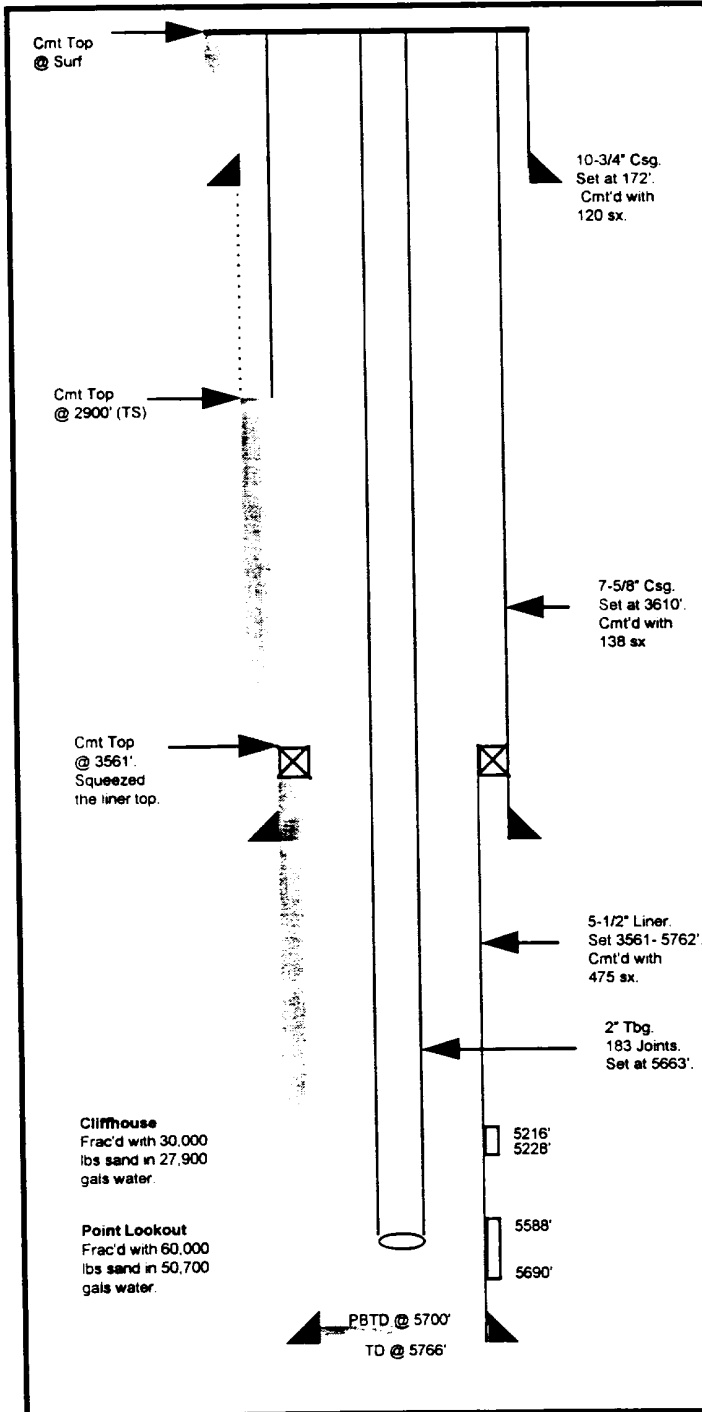
Pipeline:

Williams Field Service

San Juan 28-5 Unit #38

Unit M, Section 32, T28N, R5W
 Lat: 36°- 36.7731'/Long: 107°- 23.25534'
 Rio Arriba County, NM

Current Schematic



Current Schematic

