

UNITED STATES
DEPARTMENT OF THE INTERIOR
BUREAU OF LAND MANAGEMENT

FORM APPROVED
Budget Bureau No. 1004-0135
Expires: March 31, 1993

SUNDRY NOTICES AND REPORTS ON WELLS

Do not use this form for proposals to drill or to deepen or reentry to a different reservoir.
Use "APPLICATION FOR PERMIT - " for such proposals

1. Type of Well

☐ Oil Well ☒ Gas Well ☐ Other

2. Name of Operator

AMOCO PRODUCTION COMPANY

Attention:

Wayne Branam, Rm. 1220

3. Address and Telephone No.

P.O. Box 800, Denver, Colorado 80201

4. Location of Well (Footage, Sec., T., R., M., or Survey Description)

1650 FSL 1650 FWL Unit K Sec. 23 T 28N R 7W

5. Lease Designation and Serial No.

SF-079290

6. If Indian, Allottee or Tribe Name

7. If Unit or CA, Agreement Designation

8. Well Name and No.

San Juan 28-7 #25

9. API Well No.

30-039-07365

10. Field and Pool, or Exploratory Area

Blanco Mesaverde

11. County or Parish, State

Rio Arriba, New Mexico

12. CHECK APPROPRIATE BOX(s) TO INDICATE NATURE OF NOTICE, REPORT, OR OTHER DATA

TYPE OF SUBMISSION

TYPE OF ACTION

- ☒ Notice of Intent
☐ Subsequent Report
☐ Final Abandonment Notice

- ☐ Abandonment
☐ Recompletion
☐ Plugging Back
☐ Casing Repair
☐ Altering Casing
☒ Other Sidetrack/Liner

- ☐ Change of Plans
☐ New Construction
☐ Non-Routine Fracturing
☐ Water Shut-Off
☐ Conversion to Injection
☐ Dispose Water

(Note: Report results of multiple completion on Well Completion or Recompletion Report and Log form.)

13. Describe Proposed or Completed Operations (Clearly state all pertinent details, and give pertinent dates, including estimated date of starting any proposed work. If well is directionally drilled, give subsurface locations and measured and true vertical depths for all markers and zones pertinent to this work.)*

Amoco Production Company requests approval to perform the attached procedure.

RECEIVED
JUL 28 1994
OIL CON. DIV.
DIST. 2

RECEIVED
BLM
94 JUL 19 AM 9:40
070 FARMINGTON, NM

14. I hereby certify that the foregoing is true and correct

Signed

Wayne Branam

Title

Business Analyst

Date

7/15/94

(This space for Federal or State office use)

Approved by

Title

Conditions of approval, if any:

APPROVED

Date

JUL 20 1994

Title 18 U.S.C. Section 1001, makes it a crime for any person knowingly and willfully to make to any department or agency of the United States any representations as to any matter within its jurisdiction.

SECRET

1990

[Handwritten signature]

CLEAN OUT AND RUN 4.5" CSG PROCEDURE

San Juan 28-7 Unit #25 MV
1650' FSL 1650 FWL, Sec. 23K, T28N, R7W
Orig. Comp. 8/55
TD = 5695'

This MV well was drilled to 5695' and 7" casing was set (at 4925'). The well was then sand/oil frac'd . Therefore, size of hole below 4925' is questionable.

We will clean out the hole and set 4 1/2" production casing. The MV will then be frac'd in two stages (the Cliff House/Menefee will be perforated limited entry; therefore, both fracs should be performed the same day).

If unable to remove tubing or if caliper log can not gauge hole, a sidetrack will be performed immediately below the 7" casing.

1. Check location for anchors. Install if necessary. Test anchors. Record TP, SICP and SIBHP.
2. MIRUSU. Blow well down. NDWH. NUBOP/Test BOP.
3. TOH with tubing and inspect. Replace any bad joints.
4. Pick up casing scraper and work string. Run scraper to PBTD. Set BP at 4825' and pressure test BOPs and 7" casing to 80% of burst rating.
5. Pick up drill collars, drill pipe and 6 1/4" bit and drill out BP at 4825'.
6. Clean out well and deepen as necessary to run 4 1/2" K-55 casing to 5700'.
7. Condition hole and TOH with DP and DC. Run caliper log to calculate cement volumes. If caliper log is unable to gauge hole prepare to sidetrack per attached procedures. Change rams and run 4 1/2" csg to 5836'. Cement to 7" casing with Class B, 50/50 POZ, 2% gel, .86% Halad-344 with 5#/sx Gilsonite, and 1/4 #/sx flocele. (Casing/hole volume is questionable as hole is ASSUMED to be 6 1/4". May need more cement--have extra cement on location).
8. WOC. Drill out cement to PBTD (5695').
9. Run a GR/CCL/CBL from PBTD to 5000' to determine if squeeze work will be necessary prior to fracture stimulation. Fax results to Lara Kwartin in Denver so she can verify/add perfs for perforating.
10. Correlate GR/CCL/CBL to Schlumberger's Electric, Gamma Ray, Induction log dated 7/10/55.
11. Blow well dry with air to 5200'

12. RU lubricator and perforate the Point Lookout, under balanced with a 3 1/8" casing gun, 2 JSPF, 90 degree phasing 12 1/2 g charges. Depths are based on Schlumberger's Electric log, so be sure to adjust these depths according to the correlation log prior to perforating.

PERFORATE POINT LOOKOUT

5512-28' 5552-62' 5582-96' 5606-24' 5628-32' 5660-66'

13. Fracture stimulate according to the attached Point Lookout frac schedule. DO NOT FLOW BACK AT THIS TIME.
14. TIH with a RBP and set at 5200'. Cap with sand.
15. Blow dry with air to 4800'.
16. RU lubricator and perforate the Cliff House/Menefee, under balanced with a 3 1/8" casing gun, 1 JSPF, 12 1/2 g charges.

PERFORATE CLIFF HOUSE/MENEFEE

4974'	5016'	5100'	5315'	5408'
4984'	5022'	5106'		5433'
4990'	5026'			5478'
4996'	5040'			
	5092'			

17. Fracture stimulate according to the attached Cliff house/Menefee frac schedule.
18. Flow back well until it dies.
19. TOH with RBP set at 5200'.
20. Clean out to PBTD with air. TOH with work string.
21. Once sand entry has ceased, land tubing at 5660' with a mule shoe on bottom and a seating nipple one joint off of bottom.
22. RDMOSU.
23. Tie well back into surface equipment and return to production. Report rates and pressures on WIMS for approx. 5 days during flow back.

Please report any problems to Lara Kwartin:

(W) (303) 830-5708

(H) (303) 343-3973

SIDETRACK PROCEDURE

San Juan 28-7 Unit #25 MV

1650' FSL 1650 FWL, Sec. 23K, T28N, R7W

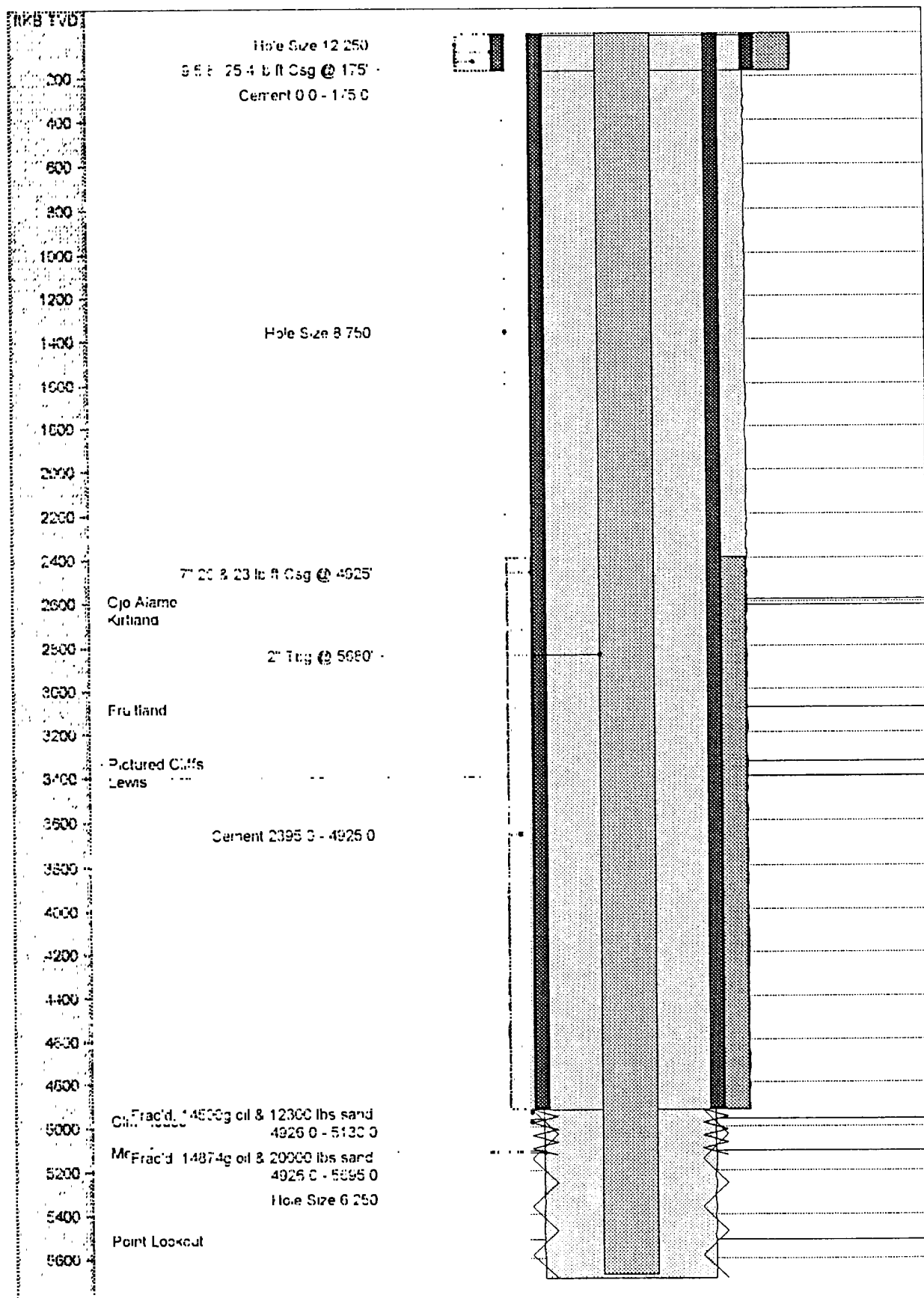
Orig. Comp. 8/55

TD = 5695'

In the event that we are unable to pull tubing or gauge the hole with the caliper log, the following sidetrack procedure will be used in place of step 6.

6. a. Free point tubing and back off below 7" casing shoe.
- b. TOH with cement retainer and set at 4920'. Squeeze open hole with a minimum of 164 cubic feet of Class B cement.
- c. WOC
- d. Pick up drill and drill out cement retainer and cement to directly below 7" casing shoe.
- e. Rig up air package and dry hole.
- f. Pick up tricone button bit (6 1/4") with a near bit stabilizer: attempt to increase deviation to approximately 10 degrees by forcing bit with the building assembly.
- g. Drill to a TVD of 5695'.
- h. Run 4 1/2" casing from surface to TD. Cement in one stage (air drilled hole) with Class B, 50/50 POZ, 2% gel, .86% Halad-344 with 5#/sx Gilsonite, and 1/4 #/sx flocele. Cement in two stages if mud drilled.

San Juan 28-7 Unit #25



1650' FSL x 1650' FWL, Sec. 23 K, T28N, R7W

San Juan 28-7 Unit #25

San Juan 28-7 Unit #25 978149	
General Well Information	
County/State: Rio Arriba, New Mexico Operator: Amoco Production Company API: 3003907365 Kelly Bushing: 10 Spud: 6/28/55 File Updated: 7/5/94	
Well Location	
Well Location: 1650' FSL x 1650' FWL, Sec 23 K, T28N, R7W	
Hole Coordinates	
Top Hole Lat: 0 Long: 0 N/S Dist: E/W Dist:	
Bottom Hole Lat: 0 Long: 0 N/S Dist: E/W Dist:	
Elevations	
KB: 6649.0 ft CF: TH: Grd: 6639.0 ft	
Hole Size	
Bit Size: 12.250 in Bit Out: 175.0 ft KB TVD Bit Size: 8.750 in Bit Out: 4925.0 ft KB TVD Bit Size: 6.250 in Bit Out: 5695.0 ft KB TVD	
Formations/Horizons	
2588.0-Ojo Alamo 2615.0-Kirtland 3085.0-Fruitland 3335.0-Pictured Cliffs 3402.0-Lewis 4967.0-Cliff House 5110.0-Menefee 5515.0-Point Lookout	
Stimulations & Treatments	
Frac'd: 14874g oil & 20000 lbs sand: 7/19/55 4926.0-5695.0 Frac'd: 14500g oil & 12300 lbs sand: 7/19/55 4926.0-5130.0	
Casing Cement	
Surface Casing 0.0-175.0 Amount: 125 Intermediate Casing 2395.0-4925.0 Amount: 500	
Casing String(s) & Equipment	
Intermediate Casing 7" 20 & 23 lb/ft Csg @ 4925' 0.0-4925.0 Run: 7/20/55 OD: 7.000 ID: Wt: Grd: Thrd: Jnts: 0	
Surface Casing 9 5/8" 25.4 lb/ft Csg @ 175' 0.0-175.0 Run: 6/29/55 OD: 9.625 ID: 8.921 Wt: 25.40 Grd: Thrd: Jnts: 0	
Tubing String(s) & Equipment	
Tubing String 2" Tbg @ 5680' 0.0-5680.0 Run: 7/20/55 OD: 2.000 ID: Wt: 4.70 Grd: Thrd: Jnts: 0	

1650' FSL x 1650' FWL, Sec. 23 K, T28N, R7W