

submitted in lieu of Form 3160-5

UNITED STATES
DEPARTMENT OF THE INTERIOR
BUREAU OF LAND MANAGEMENT

Sundry Notices and Reports on Wells

1. Type of Well

GAS

2. Name of Operator

**BURLINGTON
RESOURCES**

OIL & GAS COMPANY

3. Address & Phone No. of Operator

PO Box 4289, Farmington, NM 87499 (505) 326-9700

4. Location of Well, Footage, Sec., T, R, M

1650' FSL, 1650' FWL, Sec. 15, T-28-N, R-5-W, NMPM

5. Lease Number

SF-080516

6. If Indian, All. or

Tribe Name

7. Unit Agreement Name

San Juan 28-5 Unit

8. Well Name & Number

San Juan 28-5 U #10

9. API Well No.

30-039-07417

10. Field and Pool

Blanco Mesaverde

11. County and State

Rio Arriba Co, NM

12. CHECK APPROPRIATE BOX TO INDICATE NATURE OF NOTICE, REPORT, OTHER DATA

Type of Submission

☒ Notice of Intent

☐ Subsequent Report

☐ Final Abandonment

Type of Action

☐ Abandonment

☐ Recompletion

☐ Plugging Back

☐ Casing Repair

☐ Altering Casing

☒ Other - Pay add

☐ Change of Plans

☐ New Construction

☐ Non-Routine Fracturing

☐ Water Shut off

☐ Conversion to Injection

13. Describe Proposed or Completed Operations

It is intended to add pay to the Mesaverde formation of the subject well according to the attached procedure and wellbore diagram.

RECEIVED
DEC - 5 1997
OIL CON. DIV.
DIST. 3

14. I hereby certify that the foregoing is true and correct.

Signed [Signature] (JLDopps) Title Regulatory Administrator Date 11/24/97

(This space for Federal or State Office use)

APPROVED BY /s/ Donna W. Spencer Title Date DEC - 3 1997

CONDITION OF APPROVAL, if any:

NMOC(D)

San Juan 28-5 Unit #10
Menefee Pay Add Procedure
Unit K, Section 15, T28N, R5W
Lat: 36° - 39.50778'/Long: 107° - 20.96556'

The well is currently completed in the Cliffhouse and Point Lookout with a production rate of 60 MCFD and remaining reserves of 944 MMCF. It is intended to add the Menefee to the existing Mesaverde producer. The pay add will be sand fracture stimulated in a single stage using a total of 60,000 gals 30 lb linear gel and 90,000 lbs 20/40 sand.

1. Inspect location and test rig anchors. Comply with all NMOCD, BLM, Forestry & BR rules and regulations. Dig flowback pit or set flowback tank. Haul to location a new or inspected 5900', 2-3/8" tubing string, 6 jts 2-7/8" N-80 tubing, 2-7/8" X 3-1/2" N-80 crossover, 5700', 3-1/2" N-80 frac string and 5-400 bbl frac tanks
2. MIRU. Fill one 400 bbl tank with 2% KCL water. Record and report SI pressures on tubing, casing and bradenhead. Lay blowdown line. Blow well down and kill with 2% KCL water as necessary. ND WH and NU BOP with flow tee and stripping head. Test operation of rams. NU blooie line and 2-7/8" relief line. Redress production wellhead as needed.
3. TOOH with 2-3/8" Mesaverde production string set at 5856'. Send tubing in to be inspected and salvaged, if possible. Visually inspect tubing, note and report any scale in/on tubing.
4. PU and RIH with a 4-3/4" bit, 5-1/2" (15.5 lb/ft) casing scraper on the 2-3/8" tubing string hauled to location. Clean out to PBTD (~5880') with air. TOOH.
5. RU wireline. RIH and set CIBP at 5670'. RD wireline.
6. Load hole with 40 bbls (~1700') 2% KCL water. MIRU logging company. Run GR-CBL-CCL from PBTD til out of water. Evaluate CBL. Good cement bond must exist from PBTD to 5400' to continue with procedure.
7. RIH with 5-1/2" packer on 2-3/8" tubing. Set packer just above CIBP and pressure test to 3800 psi. Release packer and PUH to 5636'. Spot 200 gals 15% HCL across the Menefee perforation interval of 5480 to 5636'. TOOH.

All acid on this well to contain the following additives per 1000 gals.

2 gal	HAI-81M	Corrosion inhibitor
5 gal	FE-1A	Iron Control
5 gal	FE-2A	Iron Control
1 gal	SSO-21	Surfactant
1 gal	ClaSta XP	Clay control

8. RU wireline. Perforate Menefee as follows using select fire HSC guns loaded with Owens HSC-3125 302T 10 gram charges (Av. perf diameter - 0.29", Av. pen. -16.64" in concrete). Be sure to perforate from top down.

**5480', 5482', 5484', 5509', 5522', 5524', 5526', 5528', 5530', 5546',
5572', 5574', 5576', 5578', 5580', 5582', 5584', 5598', 5600', 5610',
5612', 5614', 5620', 5634', 5636' (25 holes total)**

RDMO wireline company.

- 9 Fill all 5 - 400 bbl frac tanks with 2% KCL water. Filter all water to 25 microns if brought from sources with known solids contamination. Filtration is not necessary for city water. Four tanks are for gel and one tank is for breakdown and flush.
10. TIH with 5-1/2" packer, tubing tester. 6 jts 2-7/8" N-80 tubing, 2-7/8" X 3-1/2" N-80 crossover, and remaining 3-1/2", N-80 frac string. Set packer at 5440'. Close tubing tester and test frac string to 6000 psi.
11. RU stimulation company. Pressure test surface lines to 4800 psi. Monitor backside for communication. Breakdown and attempt to balloff Menefee perforations with 1500 gals 15% HCL and 200% excess RCN 7/8" 1.3 specific gravity perf balls to 3800 psi. Lower packer to 5636' to knock off perf balls. Reset packer at 5440'.

All acid on this well to contain the following additives per 1000 gals.

2 gal	HAI-81M	Corrosion inhibitor
5 gal	FE-1A	Iron Control
5 gal	FE-2A	Iron Control
1 gal	SSO-21	Surfactant
1 gal	ClaSta XP	Clay control

12. RU stimulation company. Hold a tailgate safety meeting. Pressure test surface treating lines to 6000 psi. **Maximum surface treating pressure is 5000 psi.** Monitor backside during stimulation. Fracture stimulate Menefee with 90,000 lbs 20/40 Arizona sand in 60,000 gals 30 lb linear gel at **40 BPM**. **Tag sand with 3 radioactive tracers.** Average surface treating pressure will be 4000 psi. Treat per the following schedule:

Stage	Water (gals)	Sand Volume (lbs)
Pad	15,000	
1.0 ppg	10,000	10,000
2.0 ppg	25,000	50,000
3.0 ppg	10,000	30,000
Flush (slickwater)	2,000	
Totals	62,000	90,000

Slow rate during flush. If well is on vacuum near end of frac job, cut flush as necessary to avoid overflushing.

Frac with the following additives per 1000 gals frac fluid. **Gel will be mixed on the fly.**

*	7.5 gal	LGC-8	Gel
*	1 gal	SSO-21	Surfactant
*	0.18 lb	BE-6	Biocide
*	0.4 lb	SP	Oxidizing Breaker
*	0.2 lb	GBW-3	Enzyme Breaker

RDMO stimulation company.

13. Open well through choke manifold and monitor flow. Flow at 20 BPH or less, if sand is observed. **Take pitot gauges when possible.** When pressures allow, release packer

and TOOH. LD packer, 2-7/8" N-80 tubing, 2-7/8" X 3-1/2" crossover and 3-1/2" N-80 tubing.

14. RIH with 4-3/4" bit on 2-3/8" tubing and clean out to CIBP at 5670'. Monitor gas and water returns when applicable. Drill up CIBP. CO to PBTD with air.
15. When wellbore is sufficiently clean, TOH and RU Pro-Technics. Run After-Frac log from 5700-5400'. RD Pro-Technics.
16. RU Blue Jet. Run a Perforation Efficiency log from 5640-5470'. RD Blue Jet.
17. TIH with an expendable check, one 2-3/8" joint, standard SN and remaining 2-3/8" tubing. Broach tubing while running in hole. CO with air/mist to PBTD again, if necessary. Land tubing at 5858'. Pump off expendable check. ND BOP. NU WH. RDMO. Contact Production Operations for well tie-in.

Recommended: _____
Production Engineer

Approved: PJB 11/12/97
Drilling Superintendent

Approved: JA Colwell 11/12/97
Team Leader

Contact:

Jennifer Dobson 599-4026 (work) 564-3244 (home) 324-2461 (pager)

San Juan 28-5 Unit #10
Pertinent Data Sheet
Lat: 36° - 39.50778 min./Long: 107° - 20.96556 min

General Well Information:

Location: 1650 FSL, 1650 FWL. Unit K, Section 15, T28N, R5W, Rio Arriba County, NM

Federal Lease #: SF 080516 DP #: 49498A
Property #: 007973100 GWI/NRI: 73.17/62.36

Current Field: Blanco Mesaverde
Spud: 12/25/55 Completed: 1/16/56
GL Elevation: 6622' KB Elevation: 6632'
TD: 5945' PBTD: 5880'

Casing Record:

Hole Size	Csg Size	Weight	Grade	Depth Set	Cmt Vol	Cmt Top
12-1/4	9-5/8"	25.4 lb/ft		173'	125	Circ. to Sur.
8-3/4"	7"	20 lb/ft	J-55	3657'	300	2040' (TS)
6-1/4"	5-1/2"	15.5 lb/ft	J-55	5945'	300	4250' (TS)

Tubing Record:

Tubing Size	Weight	Grade	Depth Set	Number of Jts
2-3/8"	4.7 lb/ft	J-55	5856'	198

Formation Tops:

Ojo Alamo: 2885'	Pictured Cliffs: 3556'	Menefee: 5395'
Kirtland: 3005'	Lewis Shale: 3612'	Point Lookout: 5695'
Fruitland Coal: 3307'	Cliffhouse: 5342'	

Logging Record:

Schlumberger Electrical (1/3/56), Gamma Ray (1/8/56), Induction Log (1/8/56) and Schlumberger MicroLog (1/3/56).

Completion:

Perforated the Point Lookout at 5694-5704', 5727-70', 5820-58' at 4 SPF. Fracture stimulated this interval with 62,200 gals water and 55,000 lbs sand at 59 BPM and 1500 psi.

Perforated the Cliffhouse at 5324-96' at 4 SPF. Fracture stimulated this interval with 60,900 gals water and 45,000 lbs sand at 47 BPM and 1500 psi.

Workover History:

None

Production History:

Well was is currently making 60 MCFD from the Mesaverde. Current Mesaverde EUR: 2,247 MMCF
Mesaverde Remaining Reserves: 944 MMCF.

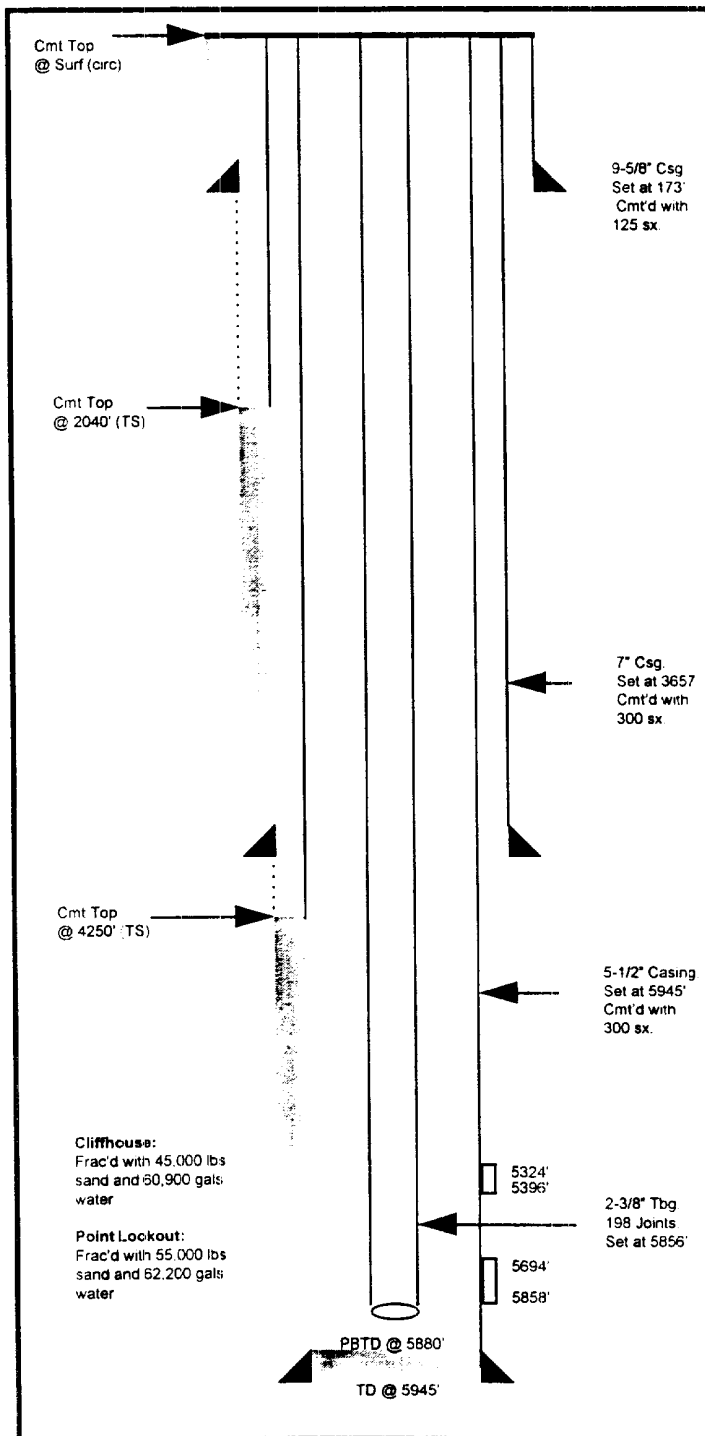
Pipeline:

El Paso Natural Gas

San Juan 28-5 Unit #10

Unit K, Section 15, T28N, R5W
Lat: 36°- 39.50778'/Long: 107°- 20.96556'
Rio Arriba County, NM

Current Schematic



Proposed Schematic

