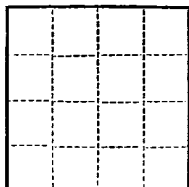


This intention is re-issued to show correction
in location.

Budget Bureau 42-R358.2
Approval expires 12-31-52.



(SUBMIT IN TRIPLICATE)

UNITED STATES
DEPARTMENT OF THE INTERIOR
GEOLOGICAL SURVEY

Land Office **Santa Fe**
Lease No. **078417**
Unit **San Juan 28-7 Unit**
14-08-001-459

SUNDRY NOTICES AND REPORTS ON WELLS

NOTICE OF INTENTION TO DRILL.....	<input checked="" type="checkbox"/>	SUBSEQUENT REPORT OF WATER SHUT-OFF.....	
NOTICE OF INTENTION TO CHANGE PLANS.....		SUBSEQUENT REPORT OF SHOOTING OR ACIDIZING.....	
NOTICE OF INTENTION TO TEST WATER SHUT-OFF.....		SUBSEQUENT REPORT OF ALTERING CASING.....	
NOTICE OF INTENTION TO RE-DRILL OR REPAIR WELL.....		SUBSEQUENT REPORT OF RE-DRILLING OR REPAIR.....	
NOTICE OF INTENTION TO SHOOT OR ACIDIZE.....		SUBSEQUENT REPORT OF ABANDONMENT.....	
NOTICE OF INTENTION TO PULL OR ALTER CASING.....		SUPPLEMENTARY WELL HISTORY.....	
NOTICE OF INTENTION TO ABANDON WELL.....			

(INDICATE ABOVE BY CHECK MARK NATURE OF REPORT, NOTICE, OR OTHER DATA)

April 6, 1955

Well No. **22** is located **1878.8** ft. from **[N]** line and **520** ft. from **[E]** line of sec. **17**

NE Section 17 **28N** **7W** **BPM**
(1/4 Sec. and Sec. No.) (Twp.) (Range) (Meridian)
Bianco **Rio Arriba** **New Mexico**
(Field) (County or Subdivision) (State or Territory)

The elevation of the derrick floor above sea level is **6192** ft.

DETAILS OF WORK

(State names of and expected depths to objective sands; show sizes, weights, and lengths of proposed casings; indicate mudding jobs, cementing points, and all other important proposed work)

It is intended to drill a well with rotary tools through the Mesa Verde drilling the pay section with gas circulation, and to sand-oil the Cliff House and Point Lookout formations. Total Depth 5190'.

Casing Program:

9 5/8" at 170' with 125 sacks regular cement circulated to surface.
7" at 4420' with 250 sacks Pozmix and 250 sacks regular cement.

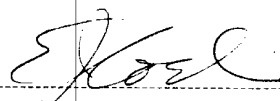
The E/2 of Section 17 is dedicated to this well.
(E/2) SF 078417.

I understand that this plan of work must receive approval in writing by the Geological Survey before operations may be commenced.

Company **El Paso Natural Gas Company**

Address **Box 997**

Farmington, New Mexico

By 
Title **Petroleum Engineer**

EL PASO NATURAL GAS COMPANY

SAN JUAN 28-7 UNIT NO. 22

SF 078412

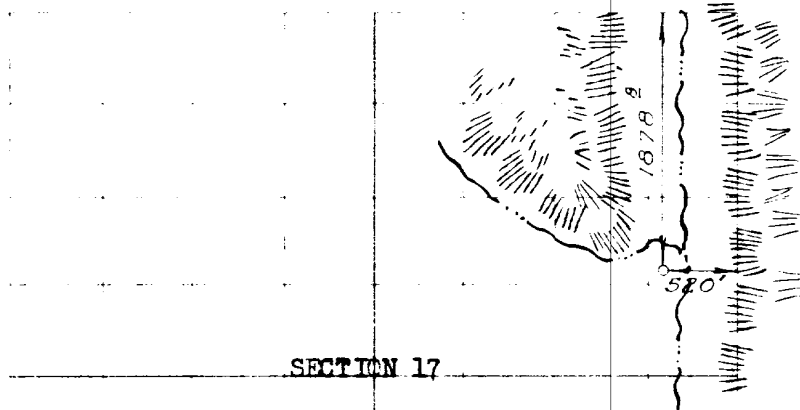
1878² FEET FROM THE NORTH LINE, 520 FEET FROM THE EAST LINE

THE SE/4 OF THE NE/4

17 28 7

RIO ARriba COUNTY, NEW MEXICO

6182²



MARCH 25 1955

C. O. Walker



Huntington, New Mexico

320.0 ACRES, E/2 SECTION (PLAT)

Note: LOCATION CHANGED BECAUSE OF TERRAIN

CORRECTED COPY

NEW MEXICO OIL CONSERVATION COMMISSION
INITIAL POTENTIAL TEST-DATA SHEET

FORM C-122-3

This form must be used for reporting all pitot tube tests made in the State. It is particularly important that it be used for reporting Initial Potential Tests in the San Juan Basin as prescribed by Order No. R-333 and by the New Mexico Oil Conservation Commission Manual of Tables and Procedure for Initial Potential (Pitot Tube) Tests.

POOL Elanco FORMATION Monterado
COUNTY Rio Arriba DATE WELL TESTED May 19, 1955

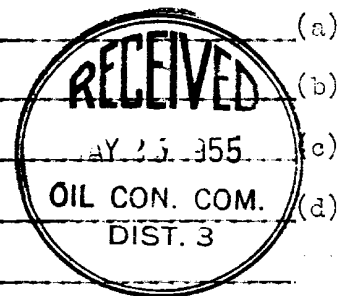
LOCATION CHANGES

OPERATOR El Paso Natural Gas Company LEASE San Juan 28-7 WELL NO. 22
UNIT
1/4 SECTION: NE LETTER B SEC. 17 TWP. 26N RGE. 7W
CASING: .7 " O.D. SET AT 4440 TUBING 2 " WT. 4.7 SET AT 5169
PAY ZONE: FROM 4440 TO 5200 GAS GRAVITY: MEAS. EST.
TESTED THROUGH: CASING X TUBING
TEST WHIPPLE 2" I.D. TYPE OF GAUGE USED ☒ (Spring) ☐ (Monometer)

OBSERVED DATA

SHOT IN PRESSURE: CASING 1062 psig TUBING: 1048 psig S. I. PERIOD 9 days
TIME WELL OPENED: 11:05 A.M. TIME WELL GAUGED: 2:05 P.M.
IMPACT PRESSURE: 3 1/2 lbs.
VOLUME (Table I) (a)
MULTIPLIER FOR PIPE OR CASING (Table II) (b)
MULTIPLIER FOR FLOWING TEMP. (Table III) (c)
MULTIPLIER FOR SP. GRAVITY (Table IV) (d)
AVE. BAROMETER PRESSURE AT WELLHEAD (Table V)
MULTIPLIER FOR BAROMETRIC PRESSURE (Table VI) (e)
INITIAL POTENTIAL, MCF/24 Hrs. (a) x (b) x (c) x (d) x (e) = 1316

WITNESSED BY: _____ TESTED BY: D. W. Mitchell
COMPANY: _____ COMPANY: El Paso Natural Gas Company
TITLE: _____ TITLE: Gas Engineer



OIL CONSERVATION COMMISSION
AZTEC DISTRICT OFFICE

No. Copies Received 3

DISTRIBUTION

Operator	NO. FURNISHED	
Santa Fe		
Proration Office	1	
State Land Office		
U. S. G. S.		
Transporter	1	
File	1	
		✓