

UNITED STATES
DEPARTMENT OF THE INTERIOR
BUREAU OF LAND MANAGEMENT

FORM APPROVED
Budget Bureau No. 1004-0135
Expires: March 31, 1993

SUNDRY NOTICES AND REPORTS ON WELLS

Do not use this form for proposals to drill or to deepen or reentry to a different reservoir.

Use "APPLICATION FOR PERMIT - " for such proposals

1. Type of Well
☐ Oil Well ☒ Gas Well ☐ Other

2. Name of Operator

Attention:

3. Address and Telephone No.

P.O. Box 800, Denver, Colorado 80201

4. Location of Well (Footage, Sec., T., R., M., or Survey Description)

1050 FNL 1850 FEL Unit B Sec. 18 T 28 N R 7W

5. Lease Designation and Serial No.

SF-078417

6. If Indian, Allottee or Tribe Name

7. If Unit or CA, Agreement Designation

8. Well Name and No.

San Juan 28-7

#8

9. API Well No.

30-039-07431

10. Field and Pool, or Exploratory Area

Blanco Mesaverde

11. County or Parish, State

Rio Arriba, New Mexico

12. CHECK APPROPRIATE BOX(s) TO INDICATE NATURE OF NOTICE, REPORT, OR OTHER DATA

TYPE OF SUBMISSION	TYPE OF ACTION
<input checked="" type="checkbox"/> Notice of Intent	<input type="checkbox"/> Abandonment
<input type="checkbox"/> Subsequent Report	<input type="checkbox"/> Recompletion
<input type="checkbox"/> Final Abandonment Notice	<input type="checkbox"/> Plugging Back
	<input type="checkbox"/> Casing Repair
	<input type="checkbox"/> Altering Casing
	<input checked="" type="checkbox"/> Other <u>Liner/Sidetrack</u>
	<input type="checkbox"/> Change of Plans
	<input type="checkbox"/> New Construction
	<input type="checkbox"/> Non-Routine Fracturing
	<input type="checkbox"/> Water Shut-Off
	<input type="checkbox"/> Conversion to Injection
	<input type="checkbox"/> Dispose Water

(Note: Report results of multiple completion on Well Completion or Recompletion Report and Log form.)

13. Describe Proposed or Completed Operations (Clearly state all pertinent details, and give pertinent dates, including estimated date of starting any proposed work. If well is directionally drilled, give subsurface locations and measured and true vertical depths for all markers and zones pertinent to this work.)*

Amoco Production Company requests approval to perform the attached procedure.

RECEIVED
JUL 28 1994
OIL CON. DIV.
DIST. 3

RECEIVED
BLM
94 JUL 19 AM 9:40
070 FARMINGTON, NM

14. I hereby certify that the foregoing is true and correct

Signed

Title

Business Analyst

Date

07/15/94

(This space for Federal or State office use)

Approved by

Title

Conditions of approval, if any:

APPROVED

Date

JUL 20 1994

Title 18 U.S.C. Section 1001, makes it a crime for any person knowingly and willfully to make to any department or agency of the United States any false, fictitious or fraudulent statements or representations as to any matter within its jurisdiction.

NMOCD

* See Instructions on Reverse Side

SIDETRACK PROCEDURE

San Juan 28-7 Unit #8 MV
1050' FNL 1850 FEL, Sec. 18, T28N, R7W
Orig. Comp. 7/53
TD = 5836'

This MV well was drilled to 5836' and 7" casing was set (at 5075'). The well was then frac'd using 1770 quarts of nitroglycerin. Therefore, size of hole below 5075' is questionable.

We will pull/chemically cut the tubing, perform remedial cement work, PxA the existing MV, sidetrack immediately below the 7" casing, and set 4 1/2" production casing to surface. The MV will then be frac'd in two stages (the Cliff House/Menefee will be perforated limited entry; therefore, both fracs should be performed the same day).

1. Check location for anchors. Install if necessary. Test anchors. Record TP, SICP and SIBHP.
2. MIRUSU. Blow well down. NDWH. NUBOP/Test BOP.
3. TOH with tubing and inspect. Replace any bad joints. If unable to remove tubing free point and back off below 7" casing shoe.
4. Pick up casing scraper and work string. Run scraper to PBTD. Set cmt ret. at 4925' and pressure test BOPs and 7" casing to 80% of burst rating.
5. Perforate 2 jspf at 3280'. Set pkr at 2900' and circ water. Attempt to circulate cement to surface. Call Lara prior to reperforating.
6. WOC.
7. TOH with pkr set at 2900'. Pick up drill collars, drill pipe and 6 1/4" bit and drill out BP at 4925'. DO NOT pressure test squeeze holes as 4 1/2" will be set across holes.
8. Squeeze open hole with a minimum of 162 cubic feet of Class B cement.
9. WOC
10. Pick up drill and drill out cement retainer and cement to directly below 7" casing shoe.
11. Rig up air package and dry hole.
12. Pick up tricone button bit (6 1/4") with a near bit stabilizer: attempt to increase deviation to approximately 10 degrees by forcing bit with the building assembly.

13. Drill to a TVD of 5836'.
14. Run 4 1/2" casing from surface to TD. Cement in one stage (air drilled hole) with Class B, 50/50 POZ, 2% gel, .86% Halad-344 with 5#/sx Gilsonite, and 1/4 #/sx flocele. Cement in two stages if mud drilled.
15. WOC. Drill out cement to PBTD (5836').
16. Run a GR/CCL/CBL from PBTD to 5000' to determine if squeeze work will be necessary prior to fracture stimulation. Fax results to Lara Kwartin in Denver so she can verify/add perms for perforating.
17. Correlate GR/CCL/CBL to Schlumberger's Gamma Ray, Neutron log dated 7/22/53.
18. Blow well dry with air to 5100' .
19. RU lubricator and perforate the Point Lookout, under balanced with a 3 1/8" casing gun, 2 JSPF, 90 degree phasing 12 1/2 g charges. Depths are based on Schlumberger's log, so be sure to adjust these depths according to the correlation log prior to perforating.

PERFORATE POINT LOOKOUT

5646-62' 5680-5706' 5730-42' 5760-64' 5782-88

20. Fracture stimulate according to the attached Point Lookout frac schedule. DO NOT FLOW BACK AT THIS TIME.
21. TIH with a RBP and set at 5200'. Cap with sand.
22. Blow dry with air to 4900'.
23. RU lubricator and perforate the Cliff House, under balanced with a 3 1/8" casing gun, 1 JSPF, 12 1/2 g charges.

PERFORATE CLIFF HOUSE/MENEFEE

5110'	5234'	5364'	5410'	5536'
5124'	5240'		5498'	5558'
5154'	5252'			
5173'	5260'			
5180'	5270'			

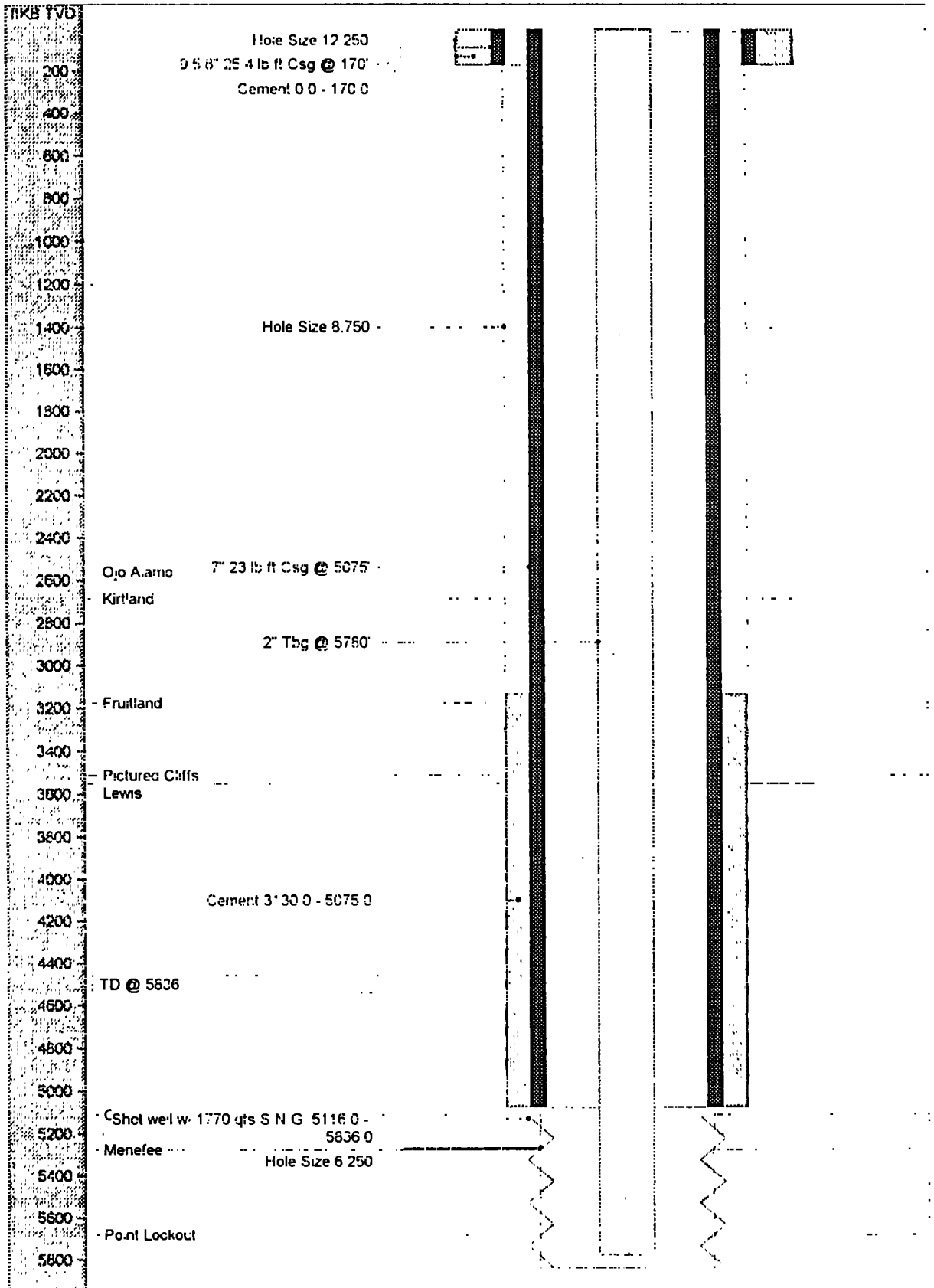
24. Fracture stimulate according to the attached Cliff House/Menefee frac schedule.

San Juan 28-7 Unit #8 MV
1050' FNL 1850 FEL, Sec. 18, T28N, R7W
Page 3

25. Flow back well until it dies.
26. TOH with RBP set at 5200'.
27. Clean out to PBTD with air. TOH with work string.
28. Once sand entry has ceased, land tubing at 5780' with a mule shoe on bottom and a seating nipple one joint off of bottom.
29. RDMOSU.
30. Tie well back into surface equipment and return to production. Report rates and pressures on WIMS for approx. 5 days during flow back.

Please report any problems to Lara Kwartin: (W) (303) 830-5708
(H) (303) 343-3973

San Juan 28-7 Unit #8



San Juan 28-7 Unit #8

San Juan 28-7 Unit #8 978168	
General Well Information	
County/State: Rio Arriba, New Mexico Operator: Amoco Production Company API: 3003907431 Kelly Bushing: 10 Spud: 7/2/53 File Updated: 6/29/94	
Well Location	
Well Location: 1050' FNL x 1850' FEL, Sec. 18, T28N, R7W	
Hole Coordinates	
Top Hole Lat: 0 Long: 0 N/S Dist: E/W Dist:	
Bottom Hole Lat: 0 Long: 0 N/S Dist: E/W Dist:	
Elevations	
KB: 6879.0 ft CF: TH: Grd: 6869.0 ft	
Hole Size	
Bit Size: 12.250 in Bit Out: 170.0 ft KB TVD Bit Size: 8.750 in Bit Out: 5075.0 ft KB TVD Bit Size: 6.250 in Bit Out: 5836.0 ft KB TVD	
Formations/Horizontes	
2560.0-Ojo Alamo 2685.0-Kirtland 3175.0-Fruitland 3513.0-Pictured Cliffs 3550.0-Lewis 5110.0-Chacra 5274.0-Menefee 5680.0-Point Lookout	
Stimulations & Treatments	
Shot well w/ 1770 qts S.N.G.: 7/23/53 5116.0-5836.0	
Casing Cement	
Surface Casing 0.0-170.0 Amount: 125 Intermediate Casing 3130.0-5075.0 Amount: 500	
Casing String(s) & Equipment	
Intermediate Casing 7" 23 lb/ft Csg @ 5075' 0.0-5075.0 Run: 7/18/53 OD: 7.000 ID: 6.366 Wt: 23.00 Grd: J-55 Thrd: Jnts: 145 Surface Casing 9 5/8" 25.4 lb/ft Csg @ 170' 0.0-170.0 Run: 7/2/53 OD: 9.625 ID: 9.001 Wt: 25.40 Grd: Thrd: Jnts: 4	
Tubing String(s) & Equipment	
Tubing String 2" Tbg @ 5780' 0.0-5780.0 Run: 7/24/53 OD: 2.000 ID: 1.700 Wt: Grd: Thrd: Jnts: 0	
User Depth Annotations	
4500.0 7/23/53 - TD @ 5836	

1050' FNL x 1850' FEL, Sec. 18, T28N, R7W