

UNITED STATES
DEPARTMENT OF THE INTERIOR
GEOLOGICAL SURVEY

30-039-20591

5. LEASE DESIGNATION AND SERIAL NO.
SF 078498

6. IF INDIAN, ALLOTTEE OR TRIBE NAME

7. UNIT AGREEMENT NAME

San Juan 28-7 Unit

8. FARM OR LEASE NAME
San Juan 28-7 Unit

9. WELL NO.

191

10. FIELD AND POOL, OR WILDCAT

Basin Dakota

11. SEC., T., R., M., OR BLK.
AND SURVEY OR AREASec. 33, T-28-N, R-7-W
NMPM

12. COUNTY OR PARISH

Rio Arriba

13. STATE

New Mexico

APPLICATION FOR PERMIT TO DRILL, DEEPEN, OR PLUG BACK

1a. TYPE OF WORK

DRILL ☒DEEPEN ☐PLUG BACK ☐

b. TYPE OF WELL

OIL
WELL ☐GAS
WELL ☒

OTHER

SINGLE
ZONE ☒MULTIPLE
ZONE ☐

2. NAME OF OPERATOR

El Paso Natural Gas Company

3. ADDRESS OF OPERATOR

PO Box 990, Farmington, NM 87401

4. LOCATION OF WELL (Report location clearly and in accordance with any State requirements.)*

At surface

1780'FEL, 890'FSL

At proposed prod. zone

14. DISTANCE IN MILES AND DIRECTION FROM NEAREST TOWN OR POST OFFICE*

15. DISTANCE FROM PROPOSED*

LOCATION TO NEAREST
PROPERTY OR LEASE LINE, FT.
(Also to nearest drlg. unit line, if any)

16. NO. OF ACRES IN LEASE

17. NO. OF ACRES ASSIGNED
TO THIS WELL

316.32320

18. DISTANCE FROM PROPOSED LOCATION*
TO NEAREST WELL, DRILLING, COMPLETED,
OR APPLIED FOR, ON THIS LEASE, FT.

19. PROPOSED DEPTH

7840'

20. ROTARY OR CABLE TOOLS

Rotary

21. ELEVATIONS (Show whether DF, RT, GR, etc.)

6716'GL

22. APPROX. DATE WORK WILL START*

23.

PROPOSED CASING AND CEMENTING PROGRAM

| SIZE OF HOLE | SIZE OF CASING | WEIGHT PER FOOT | SETTING DEPTH | QUANTITY OF CEMENT |
|--------------|----------------|-----------------|---------------|--------------------------------|
| 13 3/4" | 9 5/8" | 32.3# | 200' | 224 cu. ft. to circulate |
| 8 3/4" | 7" | 20# | 3620' | 252 cu. ft. to cover Ojo Alamo |
| 6 1/4" | 4 1/2" | 10.5&11.6# | 7840' | 650 cu. ft. to fill to 3620' |

Selectively perforate and sandwater fracture the Dakota formation.

The E/2 of Section 33 is dedicated to this well.



IN ABOVE SPACE DESCRIBE PROPOSED PROGRAM: If proposal is to deepen or plug back, give data on present productive zone and proposed new productive zone. If proposal is to drill or deepen directionally, give pertinent data on subsurface locations and measured and true vertical depths. Give blowout preventer program, if any.

24.

SIGNED

TITLE

Petroleum Engineer

DATE January 25, 1973

(This space for Federal or State office use)

PERMIT NO.

APPROVAL DATE

APPROVED BY

TITLE

JAN 29 1973

CONDITIONS OF APPROVAL, IF ANY:

U. S. GEOLOGICAL SURVEY

*See Instructions On Reverse Side

NEW MEXICO OIL CONSERVATION COMMISSION
WELL LOCATION AND ACREAGE DEDICATION PLAT

Form 7-102
Supersedes C-128
Effective 1-1-65

All distances must be from the outer boundaries of the Section

| | | | | | | |
|-------------------------|--------|------|--------------------|------------|------------|-----|
| EL PASO NATURAL GAS CO. | | | SAN JUAN 28-7 UNIT | | SF 078498 | 191 |
| 0 | 33 | 28-7 | 7-11 | RIO ARRIBA | | |
| 890 | SOUTH | | 1780 | EAST | | |
| 6716 | DAKOTA | | BASIN DAKOTA | | 320 316.32 | |

1. Outline the acreage dedicated to the subject well by colored pencil or hatchure marks on the plat.
2. If more than one lease is dedicated to the well, outline each and identify the ownership thereof (as to working interest and royalty).
3. If more than one lease of different ownership is dedicated to the well, have the interests of all owners been dated by communitization, unitization, force-pooling, etc?

☒ Yes ☐ No If answer is "yes," type of consolidation Unitization

If answer is "no," list the owners and tract descriptions which have actually been consolidated. (Use reverse side of this form if necessary.)

No allowable will be assigned to the well until all interests have been consolidated (by communitization, unitization, forced-pooling, or otherwise) or until a non-standard unit, eliminating such interests, has been approved by the Commission.

CERTIFICATION

I hereby certify that the information contained herein is true and complete to the best of my knowledge and belief.

Original Signed By:

Peter Van Ryan

El Paso Natural Gas Company

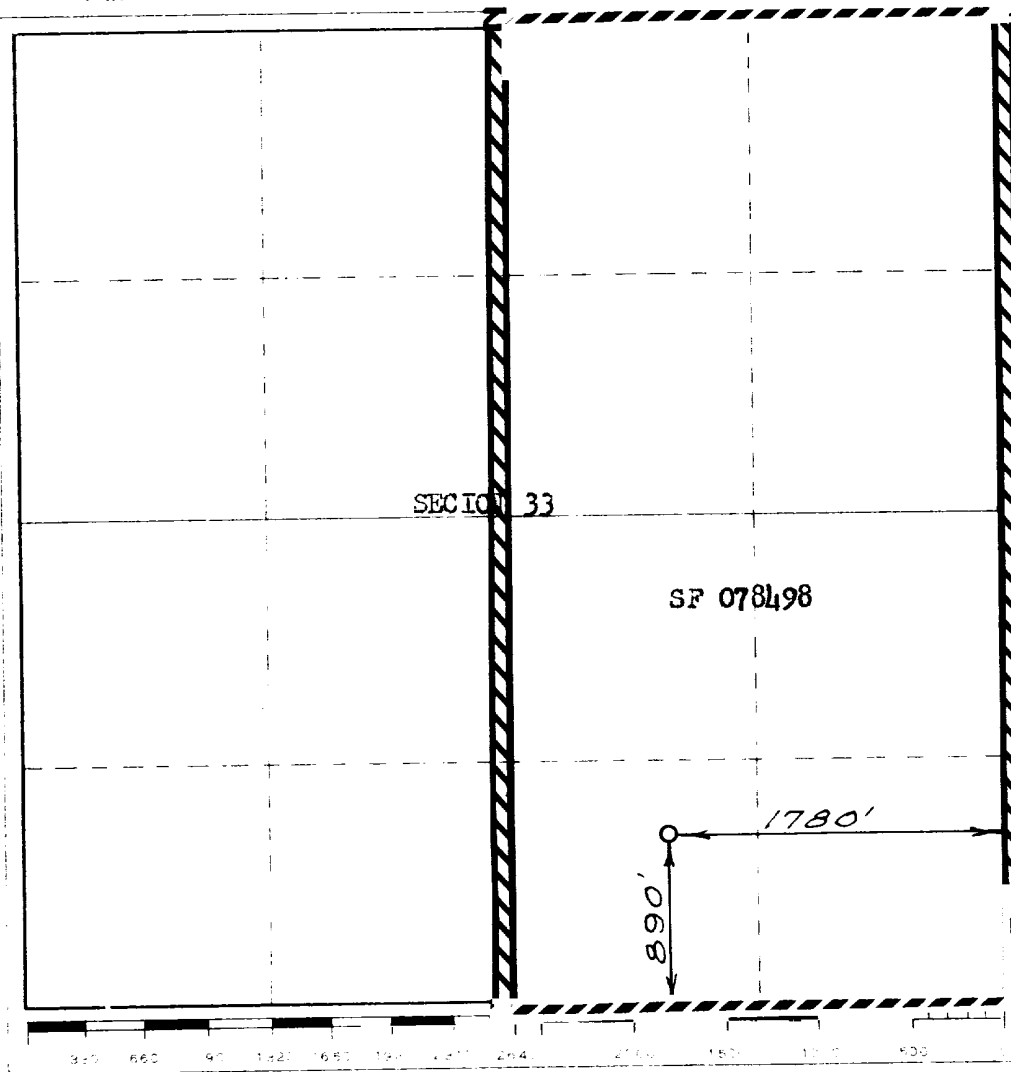
January 25, 1973

I hereby certify that the well location shown on this plat was plotted from field notes of actual surveys made by me or under my supervision, and that the same is true and correct to the best of my knowledge and belief.

JANUARY 8, 1973

David O. Wilson

1760



NEW MICO OIL CONSERVATION COMMISSION
WELL LOCATION AND ACREAGE DEDICATION PLAT

Form C-1
Supersedes C-1-28
Effective 1-1-68

All distances must be from the outer boundaries of the Section

| | | | | | | |
|-------------------------|----|--------|--------------------------------|-------------------|--|--------------------------------|
| EL PASO NATURAL GAS CO. | | | SAN JUAN 28-7 UNIT (SF 078498) | | | Well No. 191 |
| Section 0 | 33 | 28-N | Range 7-W | County RIO ARriba | | |
| 890 | | SOUTH | | 1780 | | EAST |
| 6716 | | BAKOTA | | BASIN DAKOTA | | Dedicated Acreage 316.32 Acres |

1. Outline the acreage dedicated to the subject well by colored pencil or hatchure marks on the plat below.
2. If more than one lease is dedicated to the well, outline each and show the ownership thereof (both as to working interest and royalty).
3. If more than one lease of different ownership is dedicated to the well, have the interests of all owners been consolidated by communitization, unitization, force-pooling, etc?

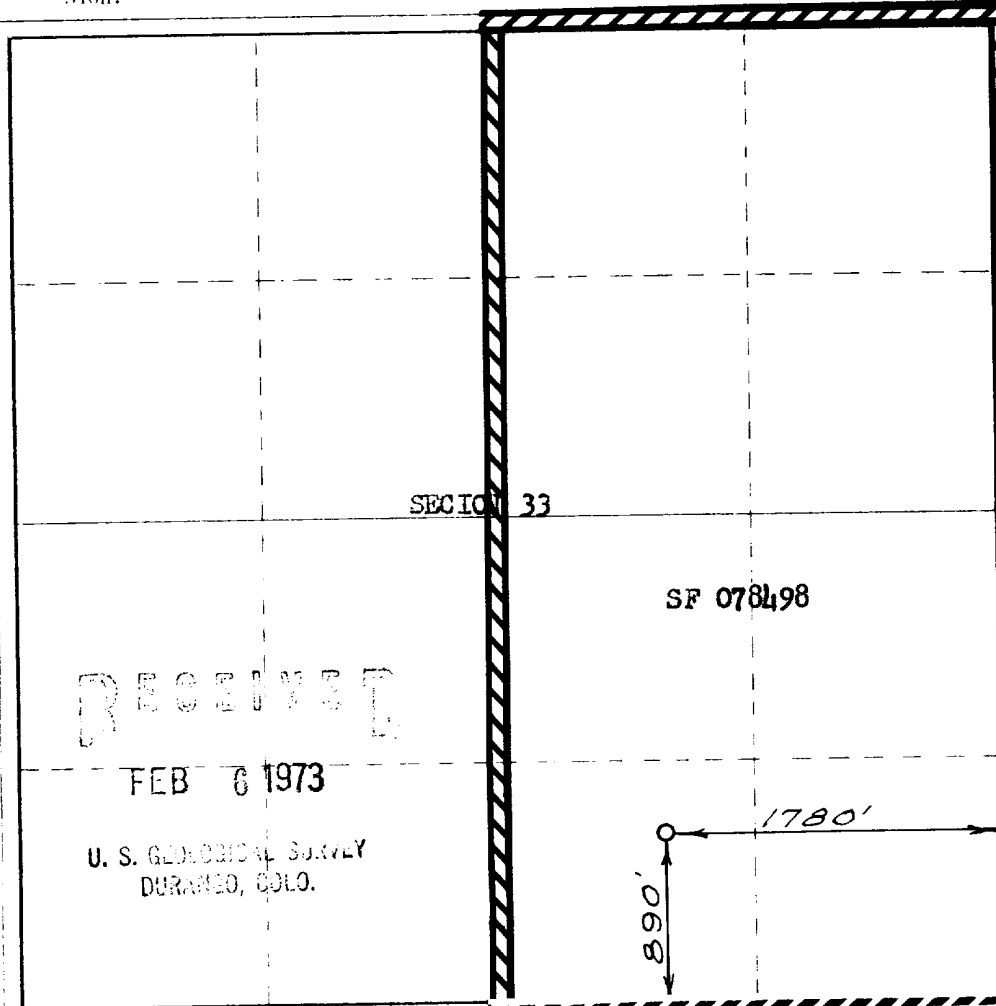
☒ Yes ☐ No If answer is "yes," type of consolidation:

RECEIVED
FEB 7 1973
OIL CON. COM.
DIST. 3

Unitization

If answer is "no," list the owners and tract descriptions which have actually been consolidated. (Use reverse side of this form if necessary.)

No allowable will be assigned to the well until all interests have been consolidated (by communitization, unitization, forced-pooling, or otherwise) or until a non-standard unit, eliminating such interests, has been approved by the Commission. **NOTE: THIS PLAT REISSUED TO SHOW CORRECTED ACREAGE, 2-1-73**



CERTIFICATION

I hereby certify that the information contained herein is true and complete to the best of my knowledge and belief.

Original Signed F. H. WOOD

Signature

Petroleum Engineer

Location

El Paso Natural Gas Co.

Company

February 5, 1973

Date

I hereby certify that the well location shown on this plat was plotted from field notes of actual surveys made by me or under my supervision, and that the same is true and correct to the best of my knowledge and belief.

Signature

JANUARY 8, 1973

Plotted by: [Signature]
and approved by:

[Signature]

1760